



Newcore Gold Intersects 2.35 g/t Gold Over 11.0 Metres and 4.71 g/t Gold Over 6.0 Metres, at the Enchi Gold Project, Ghana

First Set of Drill Results from Targets Outside of the Resource Area at Enchi; Updated Preliminary Economic Assessment Commissioned.

December 15, 2020

TSX-V: NCAU

Vancouver, BC - Newcore Gold Ltd. ("Newcore" or the "Company") (TSX-V: NCAU) is pleased to provide an update on the work program underway at the Company's 100% owned Enchi Gold Project ("Enchi" or the "Project") in Ghana, including additional results from the on-going 58,000 metre drill program. Drilling has intersected 2.35 grams per tonne gold ("g/t Au") over 11.0 metres ("m") from 99 m, as well as 4.71 g/t Au over 6.0 m from 34 m, at the Kwakyekrom Gold Target ("Kwakyekrom") at Enchi. Drilling intersected both shallow oxide and deeper sulphide mineralization in target areas that have been previously drilled but where there currently is no defined mineral resource. Newcore is also pleased to announce it has engaged BBA Inc. independent engineering consultants to prepare an updated National Instrument 43-101 ("NI 43-101") Preliminary Economic Assessment ("PEA") study for the Project, with completion targeted for the end of Q1 2021.

Highlights

- **Drill results** from holes drilled at Kwakyekrom and Kojina Hill include:
 - Hole KKRC018 intersected 2.35 g/t Au over 11.0 m from 99 m to 110 m (sulphide zone).
 - Hole KKRC023 intersected 4.71 g/t Au over 6.0 m from 34 m to 40 m (oxide zone).
 - Hole KJRC017 intersected 1.09 g/t Au over 20.0 m from 125 m to 145 m, including 2.52 g/t Au over 4.0 m from 125 m to 129 m (sulphide zone).
- **A third drill rig is now on site.** This diamond drill rig will complete the first planned deep drilling on the Project.
- **Updated PEA commissioned.** Completion targeted for the end of Q1 2021.
- **Drilling on the Project continues** with the current on-going 58,000 metre discovery and resource expansion drilling focused on drilling extensions to the existing resource zones, drilling previously drilled zones that are outside of current resources, and first pass discovery drilling to test a series of kilometre-scale gold-in-soil and geophysical anomalous zones with no prior drilling.

Luke Alexander, President & CEO of Newcore stated, "We are very happy with the progress we are making at Enchi, with a record number of metres drilled in November as we ramp-up the pace of drilling by adding a third drill rig to our on-going 58,000 metre program. We are also encouraged by the results received to date from drilling on zones that are outside of current resource areas, as we look to confirm the potential to grow the resources at Enchi by defining further deposit areas across the district scale property."

Greg Smith, Vice President of Exploration of Newcore stated, "Drilling at Kwakyekrom has shown that this zone has a significant extent of oxidation, averaging more than 50 metres

vertically below surface. All holes intersected multiple gold mineralized structures which are interpreted to be a series of sub-parallel, structurally controlled zones with results including 2.35 g/t Au over 11.0 m at a depth of only 80 m vertically from surface. The zone is open along strike and at depth with additional drilling planned. At Kojina Hill drilling intersected widespread gold mineralization in both oxidized and unoxidized zones, with this zone encountering the deepest oxidation level of any of the drilled areas at Enchi".

This news release highlights 19 holes targeting the KwakyeKrom, Kojina Hill and Nkwanta gold zones. The nine holes (1,080 m) drilled at KwakyeKrom extended the zone along strike and down dip intersecting both wide gold mineralized zones and multiple sub-parallel structures. The nine holes (1,918 m) completed at Kojina Hill encountered widespread gold mineralization within this structurally complex zone, with the 2020 drill holes largely targeting extensions within the unoxidized material below the deep oxide zone. One drill hole (100 m) was completed at Nkwanta, a 1.5 km by 2.0 km anomaly, with the hole intersecting a sequence of variably altered intermediate volcanics but no anomalous gold values. Additional surface work will be completed at Nkwanta prior to completion of additional drilling in early 2021.

Phase 2 (50,000 m) of the expanded drill program at Enchi is underway. A total of 9,772 metres in 63 holes has been completed as part of Phase 1 (originally targeted at 8,000 m), with a further 4,454 metres in 27 holes completed to date as part of Phase 2 (50,000 m). For the total planned 58,000 metre drill program, assay results have now been received and released for 63 holes representing 9,772 metres (19 holes totalling 3,098 metres reported in this news release in addition to previously released results - 8 holes on [November 26, 2020](#), 10 holes on [November 10, 2020](#), 13 holes on [October 21, 2020](#) and 13 holes on [September 28, 2020](#)).

Select assay results from the 19 holes of the drill program reported in this release are below:

Table 1 - Enchi Gold Project Drill Highlights

Hole ID	Zone/Deposit	From (m)	To (m)	Length (m)	Au (g/t)
KKRC017A	KwakyeKrom	89.0	120.0	31.0	0.46
including		107.0	120.0	13.0	0.72
KKRC018	KwakyeKrom	99.0	110.0	11.0	2.35
KKRC021	KwakyeKrom	52.0	69.0	17.0	0.57
KKRC022	KwakyeKrom	41.0	67.0	26.0	0.51
KKRC023	KwakyeKrom	34.0	40.0	6.0	4.71
KKRC025	KwakyeKrom	0.0	18.0	18.0	0.45
KJRC012	Kojina Hill	218.0	222.0	4.0	1.34
KJRC013	Kojina Hill	83.0	113.0	30.0	0.39
including		83.0	91.0	8.0	0.51
KJRC017	Kojina Hill	125.0	145.0	20.0	1.09
including		125.0	129.0	4.0	2.52

Notes:

1. See detailed table for complete results
2. Intervals reported are core lengths with true width estimated to be 75 - 85%
3. Length-weighted averages from uncut assays

A plan map showing the drill hole locations can be viewed at:

https://newcoregold.com/site/assets/files/5631/2020_12-ncau-nr-enchi-plan-map-l.pdf

A cross section showing drill results and highlights for hole KKRC018 can be viewed at:

https://newcoregold.com/site/assets/files/5631/2020_12-ncau-crosssection-kwakyekrom-kkrc018-l.pdf

A complete list of the 2020 drill results to date, including hole details, can be viewed at:

https://newcoregold.com/site/assets/files/5631/2020_12-ncau-nr-enchi-2020-drill-results-table-l.pdf

Enchi hosts a pit constrained NI 43-101 Inferred Mineral Resource of 52.9 million tonnes grading 0.72 g/t Au containing 1.22 million ounces gold (see Newcore news release dated [September 14, 2020](#)). The Company filed a NI 43-101 compliant technical report in support of the updated mineral resource estimate on October 28, 2020.

Management Change

Effective December 15, 2020, Danny Lee, CPA, CA. will be appointed Chief Financial Officer of Newcore replacing Kristian Dagsaan who has served as CFO of Newcore since July 2011.

Luke Alexander, President & CEO of Newcore stated, "On behalf of the Board of Directors and the team at Newcore, we want to thank Kristian for his contribution to the Company and are glad he will be staying on as a consultant to help with the transition. We would also like to welcome Danny to the Newcore team and look forward to his support as Newcore accelerates drilling and development at Enchi."

Mr. Lee is a Chartered Professional Accountant (CPA, CA) with more than 20 years of experience in the mining sector. His experience includes financial reporting for both Canadian and U.S. listed companies with international operations, corporate finance, strategic planning, tax planning, corporate governance, and equity financings. Mr. Lee has a Bachelor of Commerce degree from the University of British Columbia and articulated with Deloitte.

Newcore has granted 100,000 stock options at a price of \$0.61 per share for a period of five years to Mr. Lee. These options are subject to regulatory approval and are granted under the Company's long-term incentive plan and include vesting provisions.

Updated Preliminary Economic Assessment

Newcore has engaged BBA Inc. independent engineering consultants to prepare an updated NI 43-101 Preliminary Economic Assessment Technical Report for the Enchi Gold Project. The PEA will incorporate the updated Inferred Mineral Resource estimate completed in 2020. Additionally, the resource models which will form the basis for the PEA, will be updated to include results received to date from the 2020 on-going, step-out Reverse Circulation ("RC") drilling program for the Boin, Sewum, and Nyam Gold Deposits.

2020 Enchi Drilling Program

As highlighted in Newcore's news release on [November 5, 2020](#), a 58,000 metre discovery and resource expansion drilling program is underway at Enchi. The program includes both RC and diamond drilling and will include the first deep drilling planned on the Project. This drill

program is focused on testing extensions of the existing resource areas while also testing a number of exploration targets outside of the Inferred Mineral Resource. Drilling is focused on step out extensions and exploration drilling at the Boin, Sewum, and Nyam Deposits. Additional drilling is planned at previously drilled zones that are outside of the resource area (Kojina Hill, Kwakyeokrom and Eradi), along with maiden drilling to test a series of kilometre-scale gold-in-soil anomalous zones with no prior drilling (Nkwanta, Sewum South and other anomalies). All zones represent high priority targets based on geological, geochemical and geophysical surface work and previous trenching and drilling.

Kwakyeokrom Gold Zone

The Kwakyeokrom Gold Zone has seen limited past drilling and does not currently have a defined mineral resource estimate. Kwakyeokrom is located 15 kilometres south of the town of Enchi, with nearby roads and power and further access provided by a series of drill roads. The Kwakyeokrom structure is interpreted to be an extension of the Nyam structure and is located five kilometres south of Nyam. The zone is outlined on surface by a four-kilometre-long and one-to-two-kilometre-wide gold in soil anomaly. An airborne geophysical anomaly coincident with the Kwakyeokrom Gold Zone is a sharp break in the conductivity trend.

Kojina Hill Gold Zone

The Kojina Hill Gold Zone is one of the previously drilled target areas that does not currently have a defined mineral resource estimate. Kojina Hill is located 10 kilometres south of the town of Enchi, with nearby roads and power and further access provided by a series of drill roads. Kojina Hill is related to a structure sub-parallel to the Nyam Shear Zone and the zone is located 1.5 kilometres west of the Nyam Gold Deposit.

Nkwanta Gold Zone

The Nkwanta Gold Zone is a 2.5 km by 1.5 km gold in soil anomaly which has no previous drilling. The completed drill hole provided geological information in this area of limited outcrop. Additional field work including trenching will be completed and further drilling is planned for early 2021.

Drill Hole Locations

Table 2 - Enchi Gold Project Drill Hole Location Details

Hole ID	UTM East	UTM North	Elevation	Azimuth °	Dip °	Length (m)
NKRC001	525094	633089	101	300	-55	100
KKRC017A	528698	634833	127	298	-60	150
KKRC018	528658	634784	129	298	-60	120
KKRC019	528611	634738	128	298	-60	120
KKRC020	528598	634714	133	298	-60	110
KKRC021	528592	634693	132	298	-60	114
KKRC022	528555	634617	124	298	-60	114
KKRC023	528542	634595	117	298	-60	122

Hole ID	UTM East	UTM North	Elevation	Azimuth °	Dip °	Length (m)
KKRC024	528550	634557	104	298	-60	130
KKRC025	528502	634580	103	298	-60	100
KJRC011	528887	637281	110	300	-65	170
KJRC012	528887	637281	110	300	-75	252
KJRC013	528897	637243	123	300	-60	170
KJRC014	528897	637243	123	300	-75	288
KJRC015	528867	637240	130	300	-60	192
KJRC016	528871	637239	127	300	-75	252
KJRC017	528838	637203	149	300	-65	162
KJRC018	528860	637219	141	300	-65	150
KJRC019	528871	637239	129	270	-70	282

COVID-19 Protocols

Newcore's first priority is the health and safety of all employees, contractors, and local communities. The Company is following all Ghana guidelines and requirements related to COVID-19. The Company has implemented COVID-19 protocols for its on-going drill program consisting of the mandatory use of personal protective equipment (including facemask for all employees), maintaining social distancing, frequent hand washing, and daily temperature checks at the start of each shift.

Qualified Person

Mr. Gregory Smith, P. Geo, Vice President of Exploration of Newcore, is a Qualified Person as defined by NI 43-101, and has reviewed and approved the technical data and information contained in this news release.

About Newcore Gold Corp.

Newcore Gold is advancing its Enchi Gold project located in Ghana, Africa's largest gold producer¹. The Project currently hosts an Inferred Mineral Resource of 1.2 million ounces of gold at 0.72 g/t². Newcore Gold offers investors a unique combination of top-tier leadership, who are aligned with shareholders through their 32% equity ownership, and prime district scale exploration opportunities. Enchi's 216 km² land package covers 40 kilometres of Ghana's prolific Bibiani Shear Zone, a gold belt which hosts several 5 million-ounce gold deposits, including Kinross' Chirano mine 50 kilometers to the north. Newcore's vision is to build a responsive, creative and powerful gold enterprise that maximizes returns for shareholders.

On Behalf of the Board of Directors of Newcore Gold Ltd.

Luke Alexander
President, CEO & Director

For further information, please contact:

Mal Karwowska | Vice President, Corporate Development and Investor Relations
+1 604 484 4399
info@newcoregold.com
www.newcoregold.com

1 Source: Production volumes for 2019 as sourced from the World Gold Council

2 Notes for Inferred Mineral Resource Estimate:

1. CIM definition standards were followed for the resource estimate.
2. The 2020 resource models used ordinary kriging (OK) grade estimation within a three-dimensional block model with mineralized zones defined by wireframed solids and constrained by whittle pits shell.
3. A base cut-off grade of 0.3 g/t Au was used with a capping of gold grades at 18 g/t.
4. A US\$1,500/ounce gold price, open pit with heap leach operation was used to determine the cut-off grade of 0.3 g/t Au. Mining costs of US\$2.27/mined tonne and G&A and Milling costs of US\$9.84/milled tonne. The Inferred Mineral Resource Estimate is pit constrained.
5. A density of 2.45 g/cm³ was applied. Numbers may not add due to rounding.
6. Mineral Resources that are not mineral reserves do not have economic viability.
7. These numbers are from the technical report titled "Enchi Gold Project, Resource Update, Enchi, Ghana", with an effective date of October 21, 2020, prepared by Todd McCracken, P. Geo. and Greg Smith, P. Geo. in accordance with National Instrument 43-101 *Standards of Disclosure for Mineral Projects* and is available under Newcore's SEDAR profile at www.sedar.com.

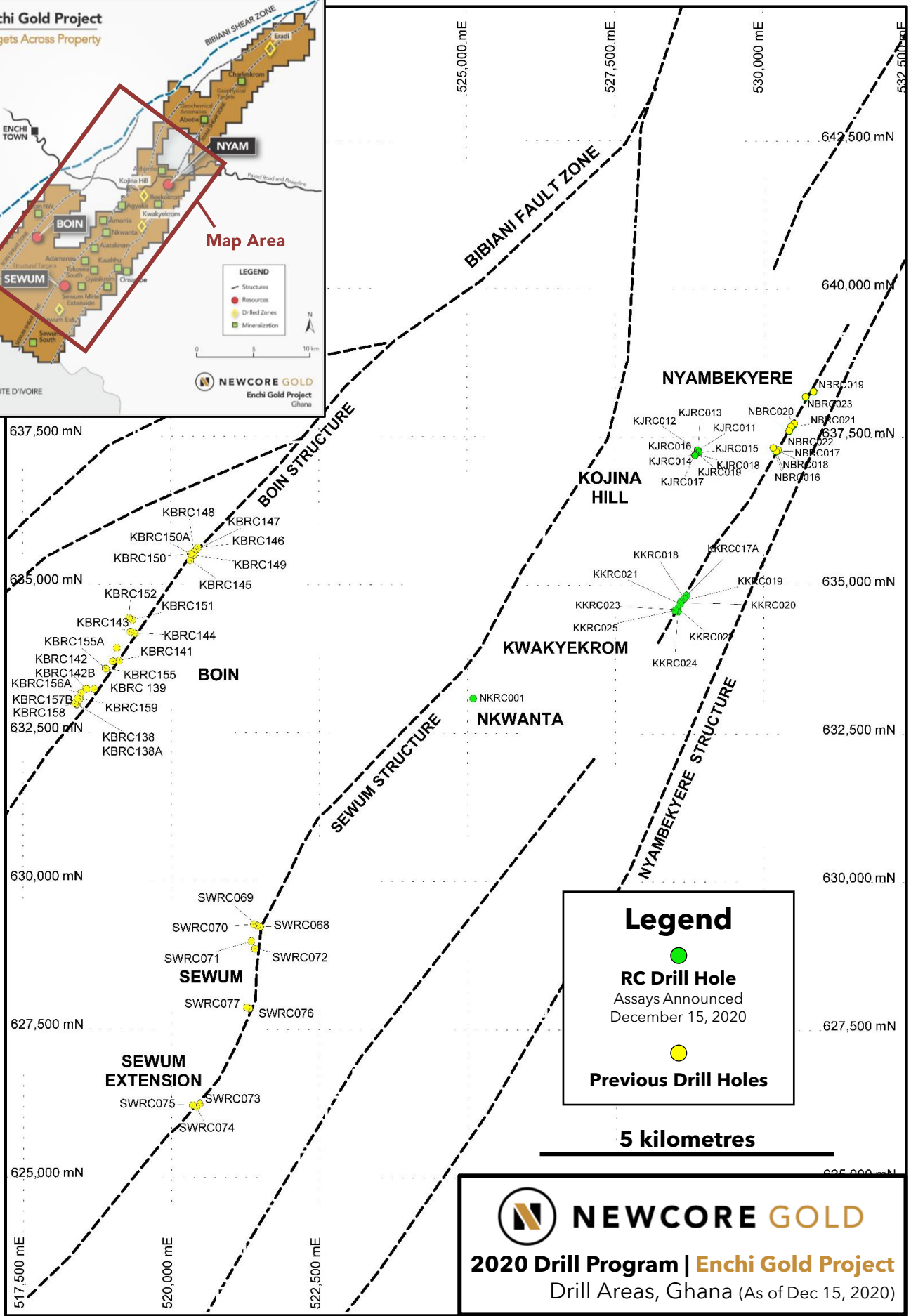
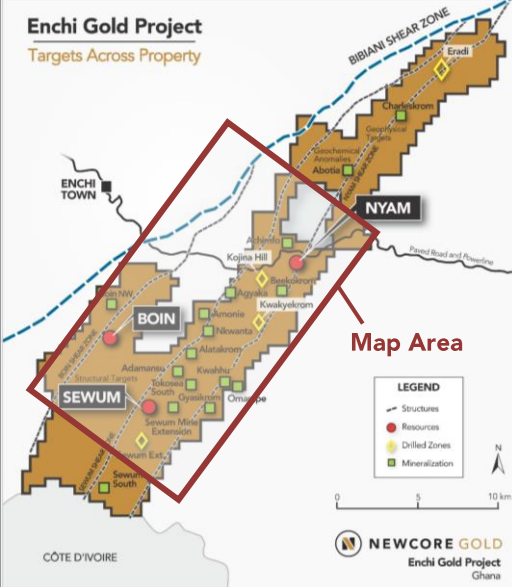
Neither the TSX Venture Exchange nor its Regulation Services Provider (as that term is defined in the policies of the TSX Venture Exchange) accepts responsibility for the adequacy or accuracy of this release.

Cautionary Note Regarding Forward-Looking Statements

This news release contains certain forward-looking statements. Any statements that express or involve discussions with respect to predictions, expectations, beliefs, plans, projections, objectives, assumptions or future events or performance (often, but not always, using words or phrases such as "expects" or does not expect", "is expected", "anticipates" or "does not anticipate", "plans", "estimates" or "intends" or stating that certain actions, events or results "may", "could", "would", "might" or "will" be taken, "occur" or "be achieved") are not statements of historical fact and may be "forward-looking statements". Forward-looking statements are subject to a variety of risks and uncertainties which could cause actual events or results to materially differ from those reflected in the forward-looking statements.

Safe Harbor Statement under the United States Private Securities Litigation Reform Act of 1995: Except for the statements of historical fact contained herein, the information presented constitutes "forward-looking statements" within the meaning of the Private Securities Litigation Reform Act of 1995. Such forward-looking statements including but not limited to those with respect to the price of gold, potential mineralization, reserve and resource determination, exploration results, and future plans and objectives of the Company involve known and unknown risks, uncertainties and other factors which may cause the actual results, performance or achievement of the Company to be materially different from any future results, performance or achievements expressed or implied by such forward-looking statements. There can be no assurance that such statements will prove to be accurate as actual results and future events could differ materially from those anticipated in such statements. Accordingly, readers should not place undue reliance on forward-looking statements.

Enchi Gold Project
Targets Across Property



Legend

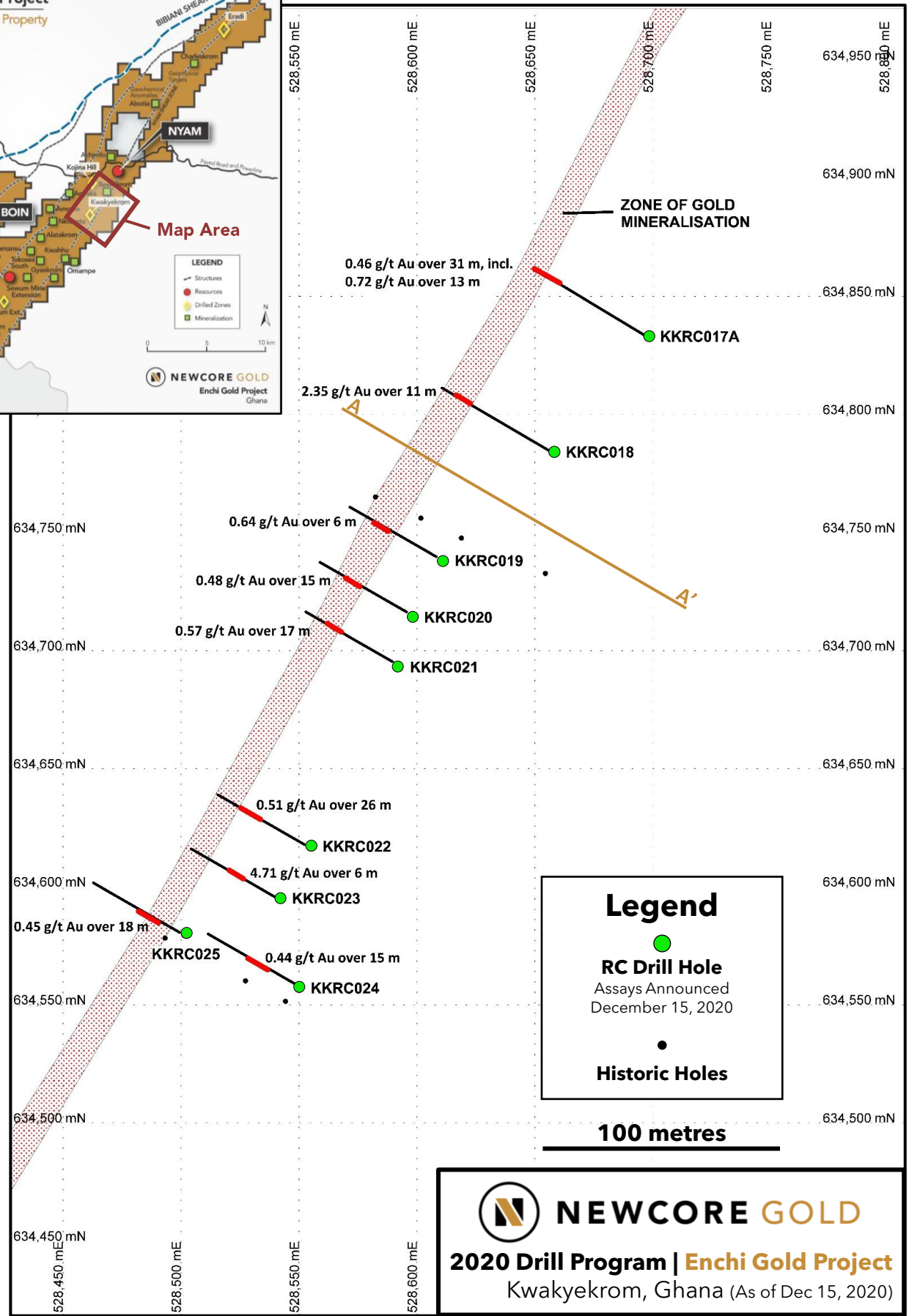
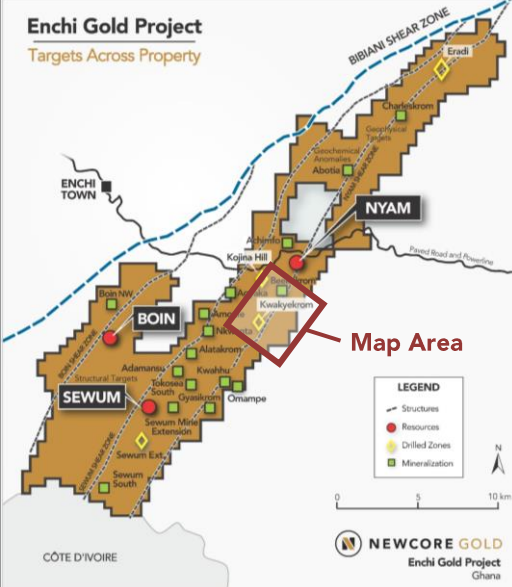
- RC Drill Hole
Assays Announced
December 15, 2020
- Previous Drill Holes

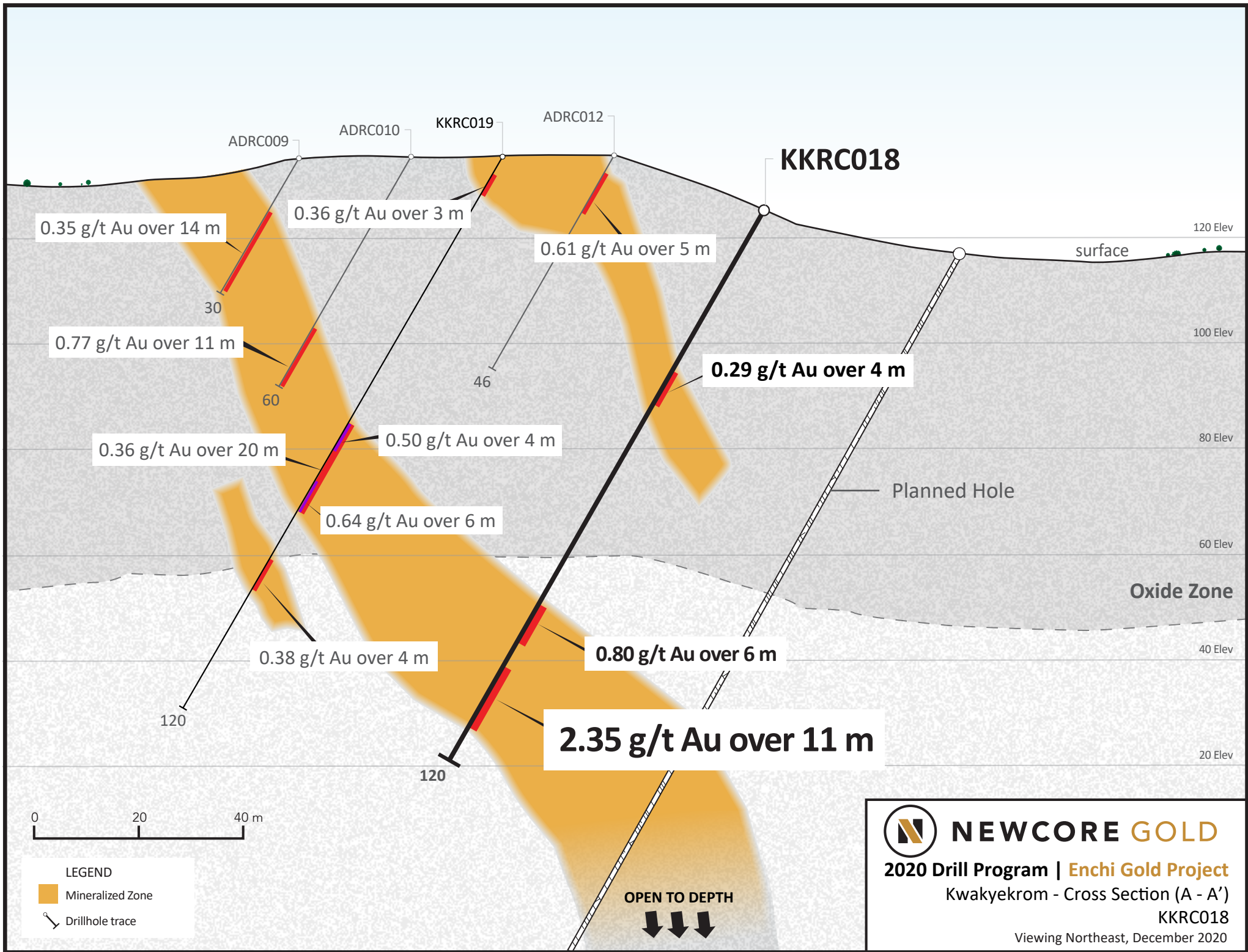
5 kilometres

NEWCORE GOLD

2020 Drill Program | Enchi Gold Project
Drill Areas, Ghana (As of Dec 15, 2020)

Enchi Gold Project
Targets Across Property





Hole ID	Zone/Deposit	From (m)	To (m)	Length (m)	Au (g/t)	UTM East	UTM North	Elevation	Azimuth °	Dip °	Hole Length (m)
KBRC138	Boin	92.0	96.0	4.0	1.05	518408	632972	147	114	-60	97
KBRC138A and	Boin	133.0 146.0	135.0 148.0	2.0 2.0	0.57 0.65	518405	632976	147	114	-60	216
KBRC139	Boin	1.0	17.0	16.0	0.69	518700	633234	130	120	-60	80
KBRC140 and	Boin	4.0 13.0	7.0 14.0	3.0 1.0	0.31 0.44	519121	633708	155	120	-60	80
KBRC141 and including and incl.	Boin	10.0 48.0 49.0 75.0	21.0 95.0 58.0 85.0	11.0 47.0 9.0 10.0	0.34 1.67 2.96 3.63	519018	633704	156	114	-50	120
KBRC142 and including	Boin	1.0 131.0 131.0	4.0 150.0 142.0	3.0 19.0 11.0	0.27 0.43 0.60	518558	633239	129	114	-50	156
KBRC142B	Boin	121.0	130.0	9.0	0.30	518573	633233	137	114	-50	238
KBRC143	Boin	3.0	17.0	14.0	0.56	519395	634172	120	114	-60	108
KBRC144	Boin	146.0	148.0	2.0	0.51	519378	634178	120	120	-60	150
KBRC145	Boin	48.0	55.0	7.0	0.54	520325	635410	117	120	-60	150
KBRC146 and including and incl.	Boin	7.0 30.0 42.0 59.0	10.0 62.0 54.0 61.0	3.0 32.0 12.0 2.0	0.24 0.92 1.78 0.52	520456	635619	124	114	-50	100
KBRC147	Boin	50.0	59.0	9.0	0.52	520424	635582	124	114	-50	102
KBRC148 and	Boin	56.0 75.0	58.0 77.0	2.0 2.0	0.69 0.30	520391	635546	122	114	-50	108
KBRC149	Boin	38.0	41.0	3.0	0.36	520378	635496	120	114	-50	100

Hole ID	Zone/Deposit	From (m)	To (m)	Length (m)	Au (g/t)	UTM East	UTM North	Elevation	Azimuth °	Dip °	Hole Length (m)
KBRC150	Boin	59.0	94.0	35.0	0.57	520335	635517	125	114	-65	148
including		65.0	91.0	26.0	0.70						
and		130.0	135.0	5.0	0.59						
and		141.0	148.0	7.0	0.42						
KBRC150A	Boin	72.0	74.0	2.0	0.59	520338	635514	122	114	-65	174
and		87.0	108.0	21.0	1.19						
and		136.0	139.0	3.0	1.01						
and		145.0	162.0	17.0	0.44						
KBRC151	Boin	9.0	20.0	11.0	2.30	519349	634402	131	120	-60	156
and		62.0	65.0	3.0	0.63						
and		136.0	144.0	8.0	0.55						
KBRC152	Boin	73.0	74.0	1.0	1.20	519292	634429	117	120	-60	258
and		209.0	213.0	4.0	1.56						
and		234.0	235.0	1.0	2.55						
KBRC153	Boin	7.0	11.0	4.0	0.68	519317	634201	122	120	-60	258
and		28.0	33.0	5.0	0.42						
and		42.0	60.0	18.0	1.21						
and		67.0	71.0	4.0	1.40						
and		110.0	114.0	4.0	0.82						
and		155.0	158.0	3.0	0.33						
and		191.0	194.0	3.0	0.39						
KBRC154	Boin	88.0	95.0	7.0	0.61	519086	633928	157	120	-60	178
and		149.0	152.0	3.0	0.27						
KBRC155	Boin	85.0	89.0	4.0	0.22	518896	633582	155	120	-60	138
and		103.0	105.0	2.0	0.89						
and		118.0	134.0	16.0	0.57						

Hole ID	Zone/Deposit	From (m)	To (m)	Length (m)	Au (g/t)	UTM East	UTM North	Elevation	Azimuth °	Dip °	Hole Length (m)
KBRC155A	Boin	95.0	97.0	2.0	0.68	518900	633578	163	120	-60	204
and		110.0	113.0	3.0	0.64						
and		127.0	135.0	8.0	0.37						
KBRC156A	Boin	156.0	174.0	18.0	0.69	518480	633164	130	114	-55	270
and		187.0	191.0	4.0	1.20						
KBRC157B	Boin	150.0	162.0	12.0	0.70	518457	633065	128	114	-65	180
KBRC158	Boin	77.0	91.0	14.0	1.41	518379	632992	126	114	-60	260
KBRC159	Boin	178.0	240.0	62.0	0.73	518423	633075	127	114	-65	240
including		187.0	206.0	19.0	1.76						
and incl.		199.0	206.0	7.0	3.18						
SWRC068	Sewum	3.0	5.0	2.0	0.28	521494	629230	193	120	-70	100
and		23.0	31.0	8.0	0.30						
and		39.0	42.0	3.0	0.35						
and		46.0	62.0	16.0	0.54						
including		51.0	57.0	6.0	0.93						
and		74.0	76.0	2.0	1.03						
SWRC069	Sewum	39.0	41.0	2.0	0.30	521442	629252	198	120	-70	125
and		50.0	59.0	9.0	0.55						
and		63.0	70.0	7.0	0.47						
and		98.0	114.0	16.0	1.20						
SWRC070	Sewum	43.0	45.0	2.0	1.41	521392	629273	193	120	-70	180
and		141.0	148.0	7.0	0.98						
SWRC071	Sewum	3.0	16.0	13.0	0.45	521347	628986	193	120	-55	100
and		38.0	43.0	5.0	0.46						
and		95.0	100.0	5.0	0.55						

Newcore Gold Ltd. | Enchi Gold Project

2020 Drill Results



Hole ID	Zone/Deposit	From (m)	To (m)	Length (m)	Au (g/t)	UTM East	UTM North	Elevation	Azimuth °	Dip °	Hole Length (m)
SWRC072	Sewum	3.0	22.0	19.0	0.67	521408	628860	199	120	-60	150
and		46.0	84.0	38.0	0.42						
SWRC073	Sewum	0.0	28.0	28.0	1.52	520472	626241	119	130	-50	100
including		15.0	25.0	10.0	3.58						
and		36.0	42.0	6.0	1.21						
SWRC074	Sewum	7.0	38.0	31.0	0.84	520416	626193	105	130	-50	100
including		8.0	17.0	9.0	1.47						
and		48.0	60.0	12.0	0.71						
and		92.0	94.0	2.0	0.36						
SWRC075	Sewum	169.0	177.0	8.0	0.56	520355	626219	102	130	-60	220
SWRC076	Sewum	1.0	12.0	11.0	0.48	521308	627853	118	120	-50	120
and		39.0	88.0	49.0	0.91						
and		104.0	120.0	16.0	3.04						
SWRC077	Sewum	29.0	35.0	6.0	0.49	521268	627871	112	120	-50	180
and		54.0	56.0	2.0	0.36						
and		68.0	83.0	15.0	0.76						
and		89.0	92.0	3.0	0.62						
and		117.0	119.0	2.0	0.40						
and		126.0	131.0	5.0	0.40						
and		138.0	140.0	2.0	0.28						
and		151.0	153.0	2.0	0.35						
and		163.0	165.0	2.0	0.40						

Hole ID	Zone/Deposit	From (m)	To (m)	Length (m)	Au (g/t)	UTM East	UTM North	Elevation	Azimuth °	Dip °	Hole Length (m)
NBRC016	Nyam	23.0	29.0	6.0	1.03	530221	637264	81	300	-60	130
and		50.0	54.0	4.0	0.40						
and		68.0	86.0	18.0	0.63						
and		97.0	100.0	3.0	0.48						
and		109.0	112.0	3.0	0.55						
NBRC017	Nyam	8.0	53.0	45.0	1.38	530241	637278	69	300	-60	150
including		8.0	30.0	22.0	0.74						
and incl.		47.0	53.0	6.0	6.25						
and		64.0	66.0	2.0	1.88						
and		83.0	93.0	10.0	0.41						
and		102.0	107.0	5.0	0.54						
and		135.0	137.0	2.0	0.34						
NBRC018	Nyam	10.0	12.0	2.0	0.25	530180	637314	76	300	-60	84
and		36.0	42.0	6.0	0.32						
NBRC019	Nyam	80.0	82.0	2.0	0.35	530845	638277	81	300	-60	156
and		91.0	108.0	17.0	1.20						
NBRC020	Nyam	51.0	60.0	9.0	1.14	530506	637714	86	300	-60	150
and		73.0	102.0	29.0	0.94						
and		110.0	120.0	10.0	1.18						
and		139.0	143.0	4.0	0.41						

Hole ID	Zone/Deposit	From (m)	To (m)	Length (m)	Au (g/t)	UTM East	UTM North	Elevation	Azimuth °	Dip °	Hole Length (m)
NBRC021	Nyam	15.0	17.0	2.0	0.33	530474	637679	93	300	-60	130
and		32.0	34.0	2.0	0.73						
and		50.0	54.0	4.0	1.56						
and		63.0	84.0	21.0	1.42						
and		90.0	96.0	6.0	1.26						
and		102.0	105.0	3.0	0.36						
and		109.0	119.0	10.0	0.52						
and		126.0	129.0	3.0	0.65						
NBRC022	Nyam	8.0	10.0	2.0	1.96	530435	637610	102	300	-60	150
and		70.0	90.0	20.0	1.72						
and		116.0	119.0	3.0	0.36						
NBRC023	Nyam	49.0	51.0	2.0	0.19	530712	638187	98	300	-60	80
NKRC001	Nkwanta	no significant results				525094	633089	101	300	-55	100
KKRC017A	Kwakyekrom	45.0	48.0	3.0	0.52	528698	634833	127	298	-60	150
and		69.0	70.0	1.0	1.17						
and		89.0	120.0	31.0	0.46						
including		107.0	120.0	13.0	0.72						
KKRC018	Kwakyekrom	35.0	39.0	4.0	0.29	528658	634784	129	298	-60	120
and		86.0	92.0	6.0	0.80						
and		99.0	110.0	11.0	2.35						

Hole ID	Zone/Deposit	From (m)	To (m)	Length (m)	Au (g/t)	UTM East	UTM North	Elevation	Azimuth °	Dip °	Hole Length (m)
KKRC019	Kwakyekrom	4.0	7.0	3.0	0.36	528611	634738	128	298	-60	120
and		58.0	78.0	20.0	0.36						
including		59.0	63.0	4.0	0.50						
and incl.		70.0	76.0	6.0	0.64						
and		88.0	92.0	4.0	0.38						
and		102.0	104.0	2.0	0.50						
KKRC020	Kwakyekrom	26.0	28.0	2.0	0.79	528598	634714	133	298	-60	110
and		44.0	47.0	3.0	0.43						
and		60.0	75.0	15.0	0.48						
and		79.0	83.0	4.0	1.04						
KKRC021	Kwakyekrom	52.0	69.0	17.0	0.57	528592	634693	132	298	-60	114
and		97.0	104.0	7.0	0.94						
KKRC022	Kwakyekrom	41.0	67.0	26.0	0.51	528555	634617	124	298	-60	114
including		59.0	66.0	5.0	1.59						
and		101.0	104.0	3.0	0.57						
KKRC023	Kwakyekrom	34.0	40.0	6.0	4.71	528542	634595	117	298	-60	122
and		60.0	66.0	6.0	0.34						
KKRC024	Kwakyekrom	35.0	38.0	3.0	0.77	528550	634557	104	298	-60	130
and		59.0	74.0	15.0	0.44						
and		104.0	113.0	9.0	0.23						
KKRC025	Kwakyekrom	0.0	18.0	18.0	0.45	528502	634580	103	298	-60	100
including		13.0	17.0	4.0	1.00						
and		23.0	29.0	6.0	0.57						
and		69.0	77.0	8.0	0.21						
and		89.0	100.0	11.0	0.63						

Newcore Gold Ltd. | Enchi Gold Project

2020 Drill Results



Hole ID	Zone/Deposit	From (m)	To (m)	Length (m)	Au (g/t)	UTM East	UTM North	Elevation	Azimuth °	Dip °	Hole Length (m)
KJRC011	Kojina Hill					528887	637281	110	300	-65	170
KJRC012	Kojina Hill	218.0	222.0	4.0	1.34	528887	637281	110	300	-75	252
and		229.0	230.0	1.0	0.83						
KJRC013	Kojina Hill	6.0	13.0	7.0	0.33	528897	637243	123	300	-60	170
and		83.0	113.0	30.0	0.39						
including		83.0	91.0	8.0	0.51						
and incl.		94.0	99.0	5.0	0.56						
and incl.		109.0	113.0	4.0	0.57						
KJRC014	Kojina Hill	57.0	60.0	3.0	0.37	528897	637243	123	300	-75	288
and		209.0	212.0	3.0	0.37						
KJRC015	Kojina Hill	126.0	127.0	1.0	0.40	528867	637240	130	300	-60	192
and		139.0	140.0	1.0	0.42						
KJRC016	Kojina Hill	174.0	175.0	1.0	0.31	528871	637239	127	300	-75	252
and		208.0	209.0	1.0	0.30						
and		244.0	246.0	2.0	0.33						
KJRC017	Kojina Hill	108.0	112.0	4.0	0.86	528838	637203	149	300	-65	162
and		119.0	122.0	3.0	0.28						
and		125.0	145.0	20.0	1.09						
including		125.0	129.0	4.0	2.52						
and		155.0	156.0	1.0	0.47						
KJRC018	Kojina Hill	48.0	50.0	2.0	0.30	528860	637219	141	300	-65	150
and		98.0	102.0	4.0	0.68						

Hole ID	Zone/Deposit	From (m)	To (m)	Length (m)	Au (g/t)	UTM East	UTM North	Elevation	Azimuth °	Dip °	Hole Length (m)
KJRC019	Kojina Hill	81.0	89.0	8.0	0.50	528871	637239	129	270	-70	282
and		121.0	122.0	1.0	0.60						

1. Intervals reported are core lengths with true width estimated to be 75 - 85%.
2. Length-weighted averages from uncut assays.
3. All drilling completed by independent contractor.
4. All drilling samples sealed on site and delivered directly to independent lab Intertek Mineral Limited located in Tarkwa, Ghana for preparation and 50g Fire Assay with AAS finish.
5. QA/QC procedures include industry standard inclusion of standards, blanks, and duplicates in all sample batches.