



Newcore Gold Increases Drill Program to 66,000 Metres and Releases Additional Drill Results from the Enchi Gold Project, Ghana

Additional 8,000 Metres of RC Drilling to be Completed; Drill Results from Step-Out Drilling on the Nyam Gold Deposit and Kojina Hill Gold Target

April 28, 2021

TSX-V: NCAU, OTCQX: NCAUF

Vancouver, BC - Newcore Gold Ltd. ("Newcore" or the "Company") (TSX-V: NCAU, OTCQX: NCAUF) is pleased to announce that on the back of the success achieved to date with drilling at the Company's 100% owned Enchi Gold Project ("Enchi" or the "Project") in Ghana, the Company has increased its 2020 - 2021 drill program to 66,000 metres, including an additional 8,000 metres of Reverse Circulation ("RC") drilling. Newcore is also pleased to announce additional drill results from the drill program underway at Enchi, with drilling at the Kojina Hill Gold Target ("Kojina Hill") intersecting 0.79 grams per tonne gold ("g/t Au") over 59.0 metres ("m") from 61 m, including 3.03 g/t Au over 10.0 m from 80 m.

Highlights

- **Drill program at Enchi increased to 66,000 metres, with an additional 8,000 metres of RC drilling to be completed.**
- **Drilling at Kojina Hill has intersected wide zones of gold mineralization, including the longest intercept to date:**
 - Hole KJRC022 intersected 0.79 g/t Au over 59.0 m from 61 m to 120 m, including 3.03 g/t Au over 10.0 m from 80 m to 90 m (sulphide zone).
 - The Kojina Hill Gold Target does not currently have a defined resource and is outlined on surface by a two-kilometre-long by one-kilometre-wide gold-in-soil anomaly.
- **Additional drilling at Nyam continues to intersect shallow gold mineralization within the near surface oxide zone and upper portions of the sulphide mineralization:**
 - Hole NBRC053 intersected 1.32 g/t Au over 9.0 m from 48 m to 57 m in the upper portion of the sulphide zone.
 - Hole NBRC050 intersected two gold mineralized structures, with the upper zone returning 1.03 g/t Au over 4.0 m from 23 m to 27 m (oxide zone) and the lower zone returning 0.67 g/t Au over 10.0 m from 35 m to 45 (sulphide zone).

Luke Alexander, President & CEO of Newcore stated, "We are very excited to be increasing our drill program to 66,000 metres on the back of the success we have had to date. The additional 8,000 metres of drilling will allow us to continue the RC drill program that is targeted at expansion of the near-surface, oxide resources at Enchi, while also completing diamond drilling that is focused on defining the deeper, higher grade sulphide potential of the Project."

Greg Smith, Vice President of Exploration of Newcore stated, "We continue to achieve strong results from our ongoing drill program at Enchi, with these recent results at Nyam continuing to outline the potential for resource growth of the near-surface oxide mineralization. We also continue to dedicate a portion of our overall program to drilling target areas that do not yet

have a defined mineral resource, such as Kojina Hill. The recent drilling at Kojina Hill has intersected the longest intercept to date, with further drilling underway to better understand the geological structure at this target area."

This news release reports drill results for 8 holes targeting the Nyam Gold Deposit (1,023 m) and 5 holes targeting the Kojina Hill Gold Target (670 m) at Enchi, with 10 of the 13 holes intersecting gold mineralization.

Select assay results from the 13 holes of the drill program reported in this release are below:

Table 1 - Enchi Gold Project Drill Highlights

Hole ID	Zone/Deposit	From (m)	To (m)	Length (m)	Au (g/t)
KJRC022	Kojina Hill	44.0	49.0	5.0	1.68
and		61.0	120.0	59.0	0.79
including		80.0	90.0	10.0	3.03
KJRC024	Kojina Hill	117.0	132.0	15.0	1.44
NBRC050	Nyam	11.0	13.0	2.0	1.23
and		23.0	27.0	4.0	1.03
and		35.0	45.0	10.0	0.67
NBRC051	Nyam	28.0	31.0	3.0	0.99
and		38.0	47.0	9.0	0.69
and		57.0	65.0	8.0	0.51
NBRC053	Nyam	9.0	11.0	2.0	0.86
and		48.0	57.0	9.0	1.32

Notes:

1. See detailed table for complete results
2. Intervals reported are core lengths with true width estimated to be 75 - 85%
3. Length-weighted averages from uncut assays

The drill results at Nyam focused on further testing the southern portion of the Nyam Gold Deposit, with a series of holes targeting the near surface oxide zone and the shallow portion of the underlying sulphide mineralization along a 300-metre portion of the structure. Hole NBRC053, drilled in an area where prior holes were spaced more than 100 metres apart, intersected multiple gold mineralized structures with results including 1.32 g/t Au over 9.0 m from 48 m to 57 m in the upper portion of the sulphide zone, and 0.86 g/t Au over 2.0 m from 9 m to 11 m in the oxide zone. Hole NBRC050, collared 150 metres north of NBRC053, intersected a series of gold mineralized structures all within the oxide zone with results including 1.23 g/t Au over 2.0 m from 11 m to 13 m, 1.03 g/t Au over 4.0 m from 23 m to 27 m, and 0.67 g/t Au over 10.0 m from 35 m to 45 m. Hole NBRC051, collared 50 metres to the south of NBRC050, also intersected three gold-bearing structures with results including 0.99 g/t Au over 3.0 m from 28 m to 31 m in oxides, 0.69 g/t Au over 9.0 m from 38 m to 47 m in the upper sulphide zone and 0.51 g/t Au over 8.0 m from 57 m to 65 m in the sulphide zone.

Kojina Hill is located 1.5 kilometres west of the Nyam Gold Deposit. Results from Kojina Hill (KJRC020 - KJRC024) were drilled in the northern portion of the target, where previous drilling has intersected a series of gold mineralized structures. The 2021 holes further tested the target

from a previously untested orientation and the area continues to exhibit structural complexity with three of five holes intersecting gold mineralization. Intersects include multiple gold zones and the longest intercept to date (true width unknown) with hole KJRC022 intersecting 0.79 g/t Au over 59.0 m from 61 m to 120 m in sulphides, including 3.03 g/t Au over 10.0 m from 80 m to 90 m, and a second near-surface intercept in oxides of 1.68 g/t Au over 5.0 m from 44 m to 49 m. An additional hole, KJRC024, drilled 50 metres to the north of KJRC022 intersected 1.44 g/t Au over 15.0 m from 117 m to 132 m in sulphides, interpreted to be the on-strike extension of the zone intersected in hole KJRC022. Three holes (KJRC020, KJRC021, KJRC023) collared further north or west failed to intersect the principal gold mineralization, suggesting steep or west dipping structures and a north plunging orientation to the gold mineralization which will be tested with further drilling in 2021.

A plan map showing the drill hole locations can be viewed at:

https://newcoregold.com/site/assets/files/5688/2021_04_28-ncau-nr-enchi-plan-maps-l.pdf

A cross section showing drill results and highlights for hole KJRC022 can be viewed at:

https://newcoregold.com/site/assets/files/5688/2021_04_28-ncau-crosssections-kojinahill-l.pdf

A complete list of the 2020 - 2021 drill results to date, including hole details, can be viewed at:

https://newcoregold.com/site/assets/files/5688/2021_04_28-ncau-enchi-2020-2021-drill-results-l.pdf

A total of 40,549 metres in 255 holes have been completed as part of the ongoing 2020 - 2021 drill program at Enchi. For the total planned 66,000 metre drill program, assay results have now been received and released for 180 holes representing 28,845 metres (13 holes totalling 1,693 metres reported in this news release in addition to previously released results - 16 holes on [April 13, 2021](#), 24 holes on [March 22, 2021](#), 15 holes on [February 17, 2021](#), 24 holes on [January 27, 2021](#), 25 holes on [January 7, 2021](#), 19 holes on [December 15, 2020](#), 8 holes on [November 26, 2020](#), 10 holes on [November 10, 2020](#), 13 holes on [October 21, 2020](#) and 13 holes on [September 28, 2020](#)).

The Enchi Gold Project hosts a pit constrained National Instrument 43-101 ("NI 43-101") Inferred Mineral Resource of 52.9 million tonnes grading 0.72 g/t Au containing 1.22 million ounces gold (see Newcore news release dated [September 14, 2020](#)). The Company filed a NI 43-101 compliant technical report in support of the updated mineral resource estimate on October 28, 2020.

Drill Program Increased to 66,000 Metres at Enchi

As a result of the success achieved to date with drilling at Enchi, Newcore has increased its 2020 - 2021 drill program to 66,000 metres, with an additional 8,000 metres of RC drilling planned.

Newcore has retained Geodrill Limited ("Geodrill") to complete the additional 8,000 metres of RC drilling. In connection with this engagement, Newcore has the option to pay Geodrill for its services in either cash or a combination of cash and up to US\$800,000 of common shares of Newcore (the "Payment Shares"). The Payment Shares can be issued from time to time in settlement of invoices from Geodrill at a deemed price per share equal to the greater of (i) the 15-day VWAP immediately prior to the issuance of the Payment Shares; or (ii) the "Discounted Market Price" as defined in policies of the TSX Venture Exchange (the "TSXV"). Each issuance

of Payment Shares will be subject to a hold period expiring four months following the date of issuance. The issuance of the Payment Shares to Geodrill is subject to TSXV approval.

Geodrill is the primary drill contractor working on Newcore's ongoing drill program at the Enchi Gold Project, which commenced in August 2020. Geodrill was established in 1998 and is a leading exploration drilling company with operations in Ghana, Burkina Faso, Côte d'Ivoire, Mali and Zambia.

2020 - 2021 Enchi Drilling Program

A 66,000 metre discovery and resource expansion drilling program is underway at Enchi. The program includes both RC and diamond drilling and will include the first deep drilling planned on the Project. This drill program includes testing extensions of the existing resource areas while also testing a number of high priority exploration targets outside of the Inferred Mineral Resource. Drilling is focused on step out extensions and exploration drilling at the Boin, Sewum, and Nyam Deposits. Additional drilling is planned at previously drilled zones that are outside of the resource area (Kojina Hill, Kwakyekrom and Eradi), along with first pass drilling to test a series of kilometre-scale gold-in-soil anomalous zones with no prior drilling (Nkwanta, Sewum South and other anomalies). All zones represent high priority targets based on geological, geochemical and geophysical surface work and previous trenching and drilling.

Nyam Gold Zone

The Nyam Gold Deposit is one of the three deposits currently included in the NI 43-101 Inferred Mineral Resource Estimate at Enchi. Nyam is located 15 kilometres south of the town of Enchi, with nearby roads and power and further access provided by a series of drill roads. Nyam is outlined on surface by a four-kilometre-long and one-to-two-kilometre-wide gold-in-soil anomaly of which less than 50% has been tested to date. An airborne geophysical anomaly coincident with the Nyam Gold Deposit shows a complex series of linear high conductivity trends, reflective of the multiple sub-parallel gold-bearing structures. As part of the 2020 - 2021 drilling program, 40 drill holes totalling 6,265 metres have been completed at Nyam.

Kojina Hill Gold Target

The Kojina Hill Gold Target is one of the previously drilled target areas on the Enchi Gold Project that does not currently have a defined mineral resource. Kojina Hill is located 10 kilometres south of the town of Enchi, with nearby roads and power and further access provided by a series of drill roads. Kojina Hill is related to a structure sub-parallel to the Nyam Shear Zone and the zone is located 1.5 kilometres west of the Nyam Gold Deposit. The Kojina Hill Target is defined on surface by a two-kilometre-long and one-kilometre-wide gold-in-soil anomaly of which less than 50% has been tested to date. As part of the 2020 - 2021 drilling program, 14 drill holes totalling 2,588 metres have been completed at Kojina Hill.

Drill Hole Locations

Table 2 - Enchi Gold Project Drill Hole Location Details

Hole ID	UTM East	UTM North	Elevation	Azimuth °	Dip °	Length (m)
NBRC048	530333	637622	101	300	-60	114
NBRC049	530360	637607	102	300	-60	134
NBRC050	530339	637516	96	300	-60	120
NBRC051	530325	637479	93	300	-60	126
NBRC052	530267	637402	87	300	-60	115
NBRC053	530292	637376	79	300	-60	155
NBRC054	530206	637384	72	300	-60	115
NBRC055	530229	637372	78	300	-60	144
KJRC020	528805	637400	97	120	-55	90
KJRC021	528774	637413	88	120	-55	132
KJRC022	528789	637334	113	120	-55	120
KJRC023	528766	637358	64	120	-55	168
KJRC024	528786	637377	107	120	-55	160

COVID-19 Protocols

Newcore's first priority is the health and safety of all employees, contractors, and local communities. The Company is following all Ghana guidelines and requirements related to COVID-19. The Company has implemented COVID-19 protocols for its ongoing drill program consisting of the mandatory use of personal protective equipment (including facemask for all employees), maintaining social distancing, frequent hand washing, and daily temperature checks at the start of each shift.

Newcore Gold Best Practice

Newcore is committed to best practice standards for all exploration, sampling and drilling activities. Drilling was completed by an independent drilling firm using industry standard RC and Diamond Drill equipment. Analytical quality assurance and quality control procedures include the systematic insertion of blanks, standards and duplicates into the sample strings. Samples are placed in sealed bags and shipped directly to Intertek Labs located in Tarkwa, Ghana for 50 gram gold fire assay.

Qualified Person

Mr. Gregory Smith, P. Geo, Vice President of Exploration of Newcore, is a Qualified Person as defined by NI 43-101, and has reviewed and approved the technical data and information contained in this news release. Mr. Smith has verified the technical and scientific data disclosed herein and has conducted appropriate verification on the underlying data including confirmation of the drillhole data files against the original drillhole logs and assay certificates.

About Newcore Gold Ltd.

Newcore Gold is advancing its Enchi Gold project located in Ghana, Africa's largest gold producer¹. The Project currently hosts an Inferred Mineral Resource of 1.2 million ounces of gold at 0.72 g/t². Newcore Gold offers investors a unique combination of top-tier leadership, who are aligned with shareholders through their 32% equity ownership, and prime district scale exploration opportunities. Enchi's 216 km² land package covers 40 kilometres of Ghana's prolific Bibiani Shear Zone, a gold belt which hosts several 5 million-ounce gold deposits, including Kinross' Chirano mine 50 kilometers to the north. Newcore's vision is to build a responsive, creative and powerful gold enterprise that maximizes returns for shareholders.

On Behalf of the Board of Directors of Newcore Gold Ltd.

Luke Alexander
President, CEO & Director

For further information, please contact:

Mal Karwowska | Vice President, Corporate Development and Investor Relations
+1 604 484 4399
info@newcoregold.com
www.newcoregold.com

1 Source: Production volumes for 2019 as sourced from the World Gold Council

2 Notes for Inferred Mineral Resource Estimate:

1. CIM definition standards were followed for the resource estimate.
2. The 2020 resource models used ordinary kriging (OK) grade estimation within a three-dimensional block model with mineralized zones defined by wireframed solids and constrained by whittle pits shell.
3. A base cut-off grade of 0.3 g/t Au was used with a capping of gold grades at 18 g/t.
4. A US\$1,500/ounce gold price, open pit with heap leach operation was used to determine the cut-off grade of 0.3 g/t Au. Mining costs of US\$2.27/mined tonne and G&A and Milling costs of US\$9.84/milled tonne. The Inferred Mineral Resource Estimate is pit constrained.
5. A density of 2.45 g/cm³ was applied. Numbers may not add due to rounding.
6. Mineral Resources that are not mineral reserves do not have economic viability.
7. These numbers are from the technical report titled "Enchi Gold Project, Resource Update, Enchi, Ghana", with an effective date of October 21, 2020, prepared by Todd McCracken, P. Geo. and Greg Smith, P. Geo. in accordance with National Instrument 43-101 *Standards of Disclosure for Mineral Projects* and is available under Newcore's SEDAR profile at www.sedar.com.

Neither the TSX Venture Exchange nor its Regulation Services Provider (as that term is defined in the policies of the TSX Venture Exchange) accepts responsibility for the adequacy or accuracy of this release.

Cautionary Note Regarding Forward-Looking Statements

This news release includes statements that contain "forward-looking information" within the meaning of the applicable Canadian securities legislation ("forward-looking statements"). All statements, other than statements of historical fact, are forward-looking statements and are based on expectations, estimates and projections as at the date of this news release. Any statement that involves discussion with respect to predictions, expectations, beliefs, plans, projections, objectives, assumptions, future events or performance (often, but not always using phrases such as "plans", "expects", "is expected", "budget", "scheduled", "estimates", "forecasts", "intends", "anticipates", or "believes" or variations (including negative variations) of such words and phrases, or state that certain actions, events or results "may",

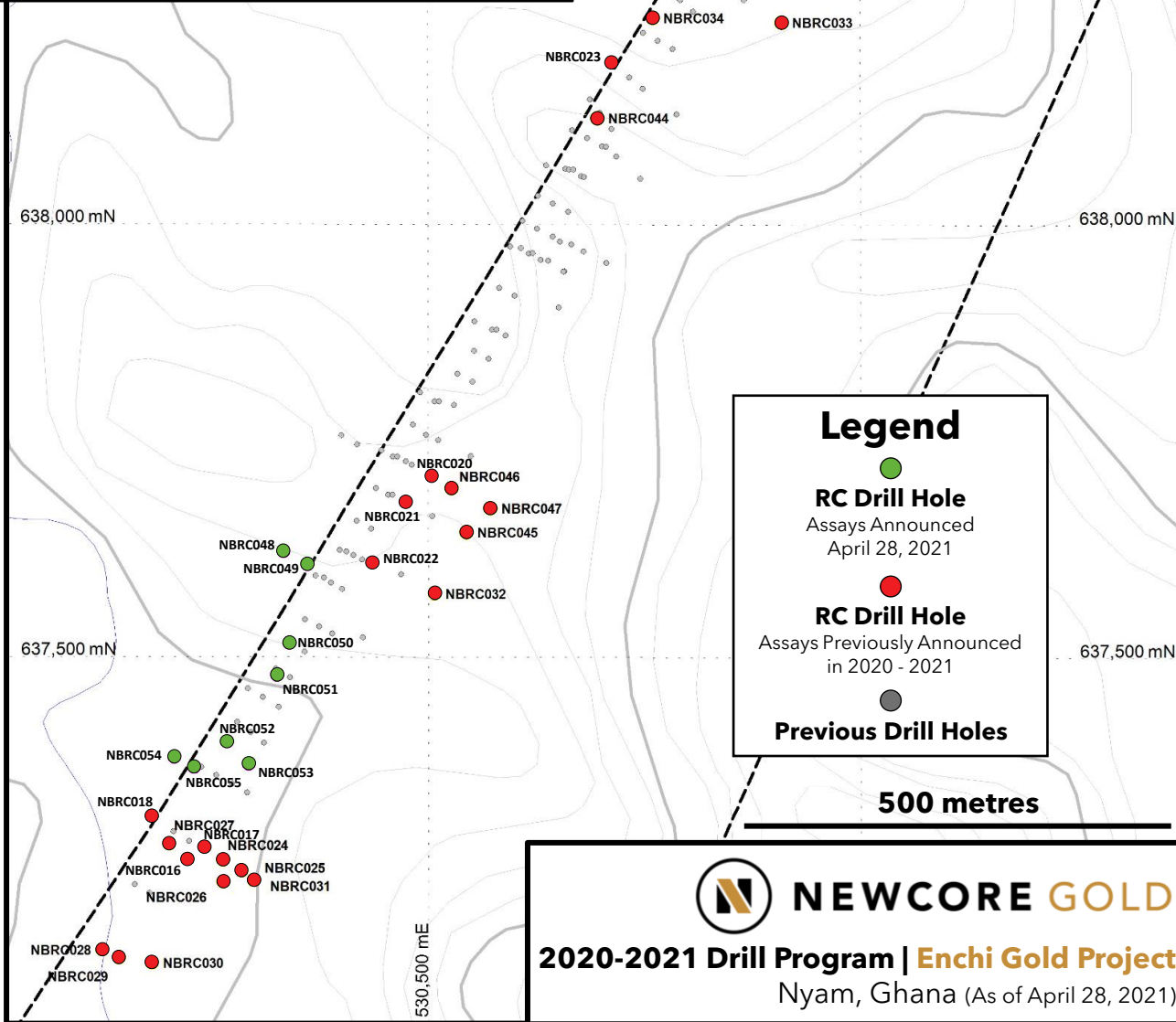
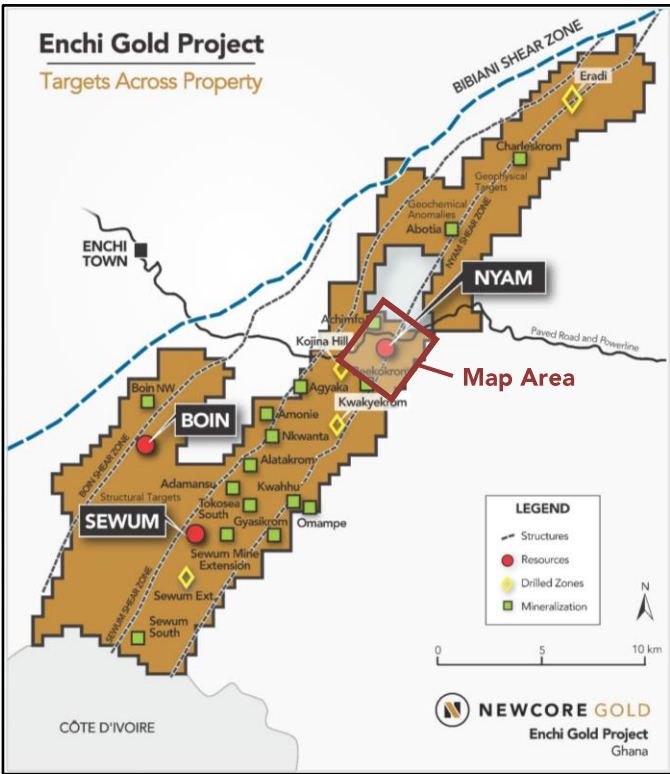
"could", "would", "might" or "will" be taken, occur or be achieved) are not statements of historical fact and may be forward-looking statements. In this news release, forward-looking statements relate, among other things, to: statements about the estimation of mineral resources; results of our ongoing drill campaign, magnitude or quality of mineral deposits; anticipated advancement of mineral properties or programs; and future exploration prospects.

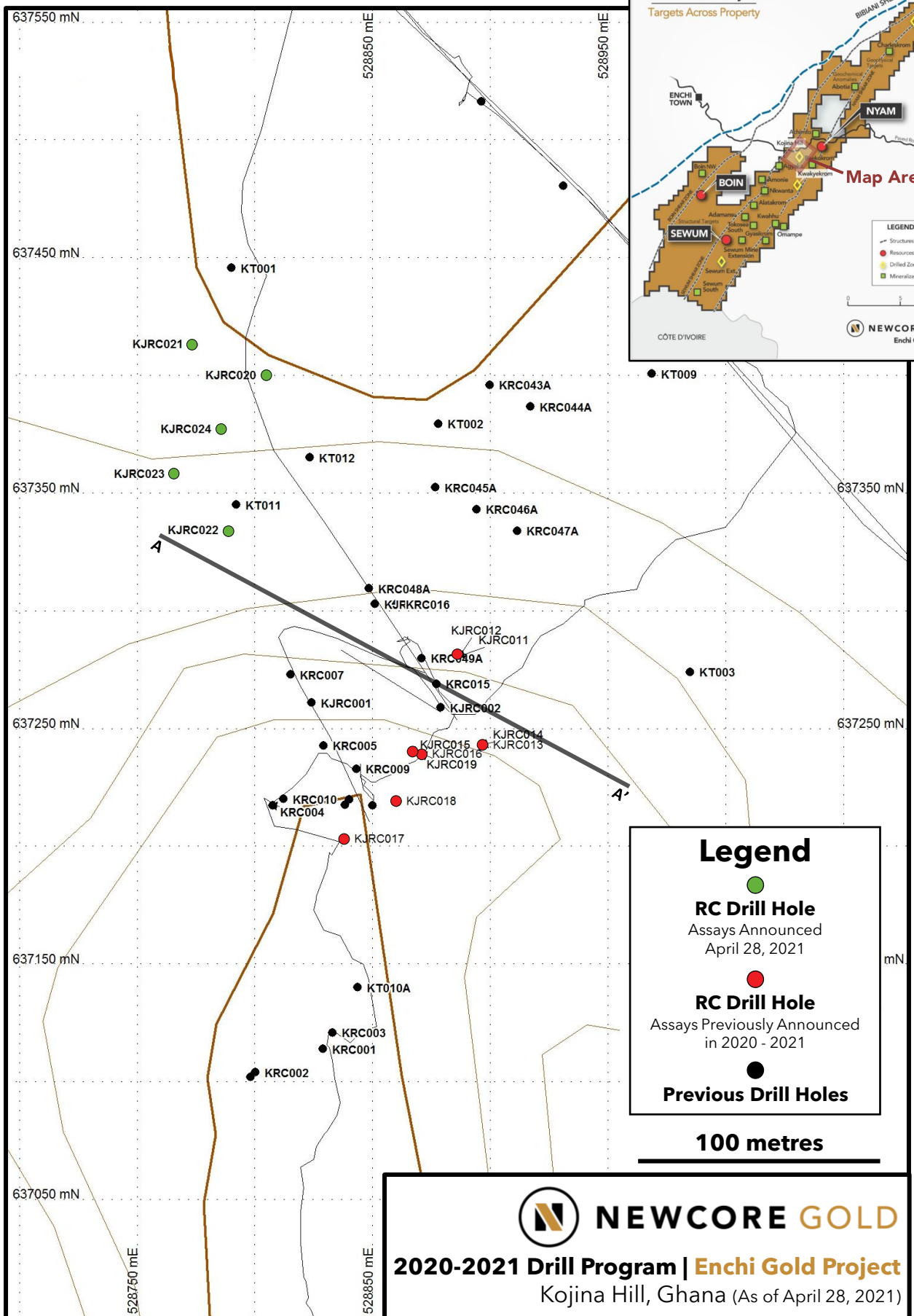
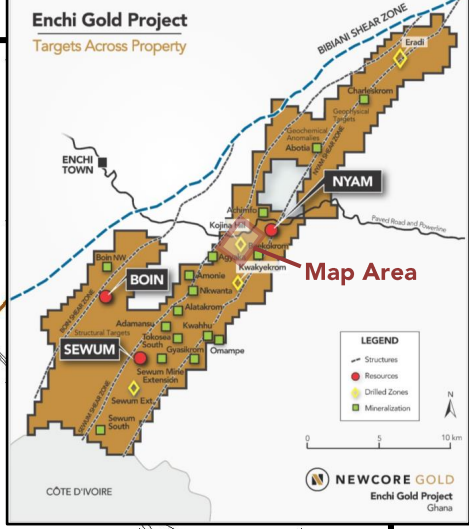
These forward-looking statements, and any assumptions upon which they are based, are made in good faith and reflect our current judgment regarding the direction of our business. The assumptions underlying the forward-looking statements are based on information currently available to Newcore. Although the forward-looking statements contained in this news release are based upon what management of Newcore believes, or believed at the time, to be reasonable assumptions, Newcore cannot assure its shareholders that actual results will be consistent with such forward-looking statements, as there may be other factors that cause results not to be as anticipated, estimated or intended. Forward-looking information also involves known and unknown risks, uncertainties and other factors which may cause the actual results, performance or achievements of the Company to be materially different from any future results, performance or achievements expressed or implied by the forward-looking information. Such factors include, among others: risks related to the speculative nature of the Company's business; the Company's formative stage of development; the Company's financial position; possible variations in mineralization, grade or recovery rates; actual results of current exploration activities; fluctuations in general macroeconomic conditions; fluctuations in securities markets; fluctuations in spot and forward prices of gold and other commodities; fluctuations in currency markets (such as the Canadian dollar to United States dollar exchange rate); change in national and local government, legislation, taxation, controls, regulations and political or economic developments; risks and hazards associated with the business of mineral exploration, development and mining (including environmental hazards, unusual or unexpected geological formations); the presence of laws and regulations that may impose restrictions on mining; employee relations; relationships with and claims by local communities; the speculative nature of mineral exploration and development (including the risks of obtaining necessary licenses, permits and approvals from government authorities); and title to properties.

Forward-looking statements contained herein are made as of the date of this news release and the Company disclaims any obligation to update any forward-looking statements, whether as a result of new information, future events or results, except as may be required by applicable securities laws. There can be no assurance that forward-looking information will prove to be accurate, as actual results and future events could differ materially from those anticipated in such statements. Accordingly, readers should not place undue reliance on forward-looking information.

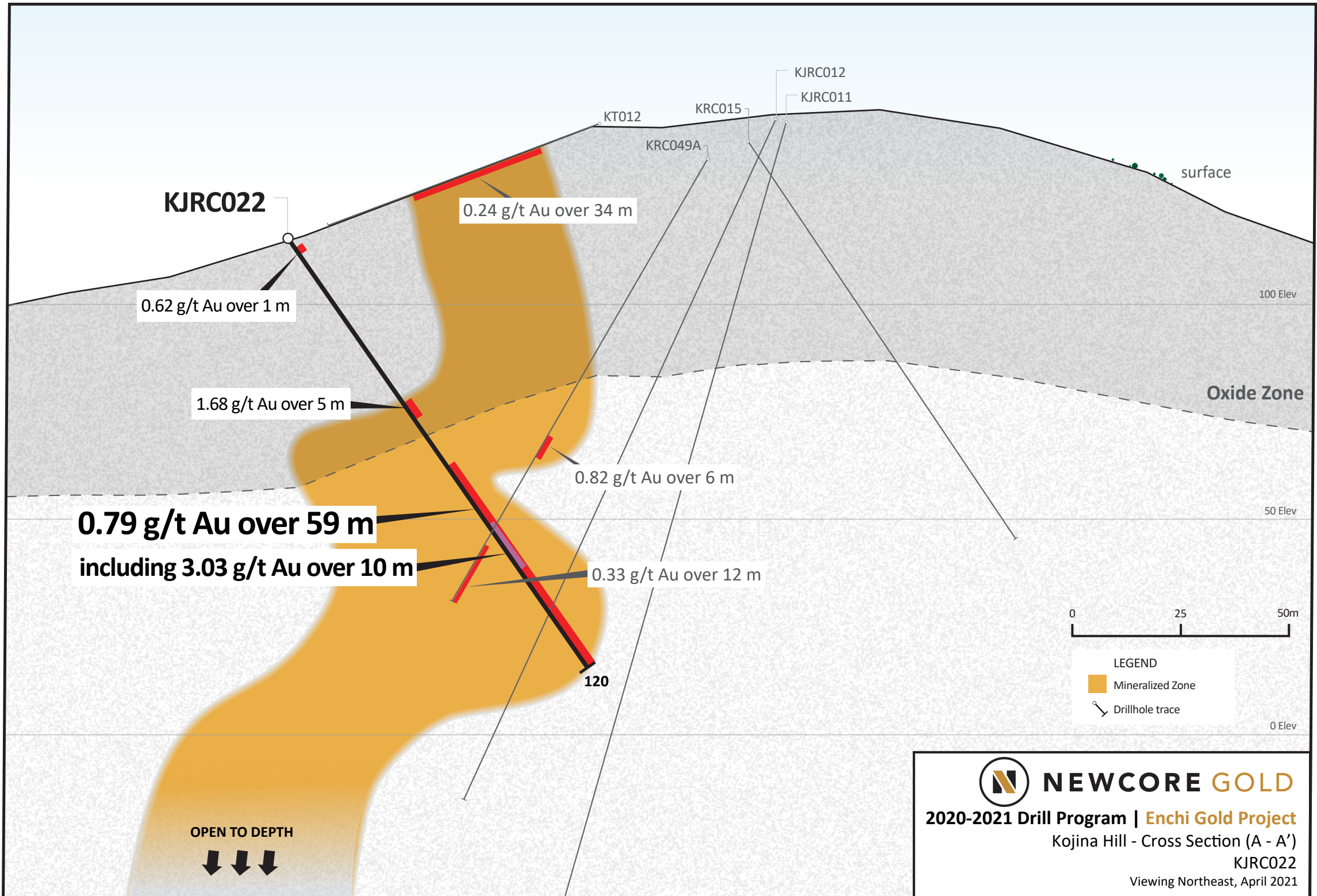
Enchi Gold Project

Targets Across Property





NEWCORE GOLD
2020-2021 Drill Program | Enchi Gold Project
Kojina Hill, Ghana (As of April 28, 2021)



NEWCORE GOLD

2020-2021 Drill Program | Enchi Gold Project

Kojina Hill - Cross Section (A - A')

KJRC022

Viewing Northeast, April 2021

Newcore Gold Ltd. | Enchi Gold Project

2020 - 2021 Drill Results

Table accompanies news release dated April 28, 2021



Drill Results Released April 28, 2021

Hole ID	Zone/Deposit	From (m)	To (m)	Length (m)	Au (g/t)	UTM East	UTM North	Elevation	Azimuth °	Dip °	Hole Length (m)
NBRC048 and and	Nyam	79.0	85.0	6.0	0.33	530333	637622	101	300	-60	114
		95.0	101.0	6.0	0.31						
		104.0	114.0	10.0	0.30						
NBRC049 and	Nyam	7.0	10.0	3.0	0.39	530360	637607	102	300	-60	134
		13.0	14.0	1.0	0.37						
NBRC050 and and and	Nyam	11.0	13.0	2.0	1.23	530339	637516	96	300	-60	120
		23.0	27.0	4.0	1.03						
		35.0	45.0	10.0	0.67						
		50.0	53.0	3.0	0.35						
NBRC051 and and and	Nyam	15.0	16.0	1.0	0.30	530325	637479	93	300	-60	126
		28.0	31.0	3.0	0.99						
		38.0	47.0	9.0	0.69						
		57.0	65.0	8.0	0.51						
NBRC052 and and and and	Nyam	4.0	7.0	3.0	1.28	530267	637402	87	300	-60	115
		17.0	22.0	5.0	0.31						
		24.0	26.0	2.0	0.34						
		38.0	40.0	2.0	0.34						
		67.0	69.0	2.0	1.97						
NBRC053 and and and	Nyam	9.0	11.0	2.0	0.86	530292	637376	79	300	-60	155
		42.0	44.0	2.0	0.32						
		48.0	57.0	9.0	1.32						
		100.0	107.0	7.0	0.33						
NBRC054	Nyam	no significant results				530206	637384	72	300	-60	115
NBRC055 and	Nyam	12.0	21.0	9.0	0.38	530229	637372	78	300	-60	144
		102.0	103.0	1.0	1.04						

Newcore Gold Ltd. | Enchi Gold Project

2020 - 2021 Drill Results

Table accompanies news release dated April 28, 2021



Hole ID	Zone/Deposit	From (m)	To (m)	Length (m)	Au (g/t)	UTM East	UTM North	Elevation	Azimuth °	Dip °	Hole Length (m)
KJRC020	Kojina Hill	67.0	69.0	2.0	0.44	528805	637400	97	120	-55	90
KJRC021	Kojina Hill		no significant results			528774	637413	88	120	-55	132
KJRC022	Kojina Hill	2.0	3.0	1.0	0.62	528789	637334	113	120	-55	120
and		44.0	49.0	5.0	1.68						
and		61.0	120.0	59.0	0.79						
including		80.0	90.0	10.0	3.03						
KJRC023	Kojina Hill		no significant results			528766	637358	64	120	-55	168
KJRC024	Kojina Hill	86.0	100.0	14.0	0.87	528786	637377	107	120	-55	160
and		117.0	132.0	15.0	1.44						

1. Intervals reported are core lengths with true width estimated to be 75 - 85%.
2. Length-weighted averages from uncut assays.
3. All drilling completed by independent contractor.
4. All drilling samples sealed on site and delivered directly to independent lab Intertek Mineral Limited located in Tarkwa, Ghana for preparation and 50g Fire Assay with AAS finish.
5. QA/QC procedures include industry standard inclusion of standards, blanks, and duplicates in all sample batches.

[SEE NEXT PAGE FOR PREVIOUSLY RELEASED RESULTS]

Newcore Gold Ltd. | Enchi Gold Project

2020 - 2021 Drill Results

Table accompanies news release dated April 28, 2021



Previously Released Drill Results

Hole ID	Zone/Deposit	From (m)	To (m)	Length (m)	Au (g/t)	UTM East	UTM North	Elevation	Azimuth °	Dip °	Hole Length (m)
KBRC138	Boin	92.0	96.0	4.0	1.05	518408	632972	147	114	-60	97
KBRC138A	Boin	133.0	135.0	2.0	0.57	518405	632976	147	114	-60	216
and		146.0	148.0	2.0	0.65						
KBRC139	Boin	1.0	17.0	16.0	0.69	518700	633234	130	120	-60	80
KBRC140	Boin	4.0	7.0	3.0	0.31	519121	633708	155	120	-60	80
and		13.0	14.0	1.0	0.44						
KBRC141	Boin	10.0	21.0	11.0	0.34	519018	633704	156	114	-50	120
and		48.0	95.0	47.0	1.67						
including		49.0	58.0	9.0	2.96						
and incl.		75.0	85.0	10.0	3.63						
KBRC142	Boin	1.0	4.0	3.0	0.27	518558	633239	129	114	-50	156
and		131.0	150.0	19.0	0.43						
including		131.0	142.0	11.0	0.60						
KBRC142B	Boin	121.0	130.0	9.0	0.30	518573	633233	137	114	-50	238
KBRC143	Boin	3.0	17.0	14.0	0.56	519395	634172	120	114	-60	108
KBRC144	Boin	146.0	148.0	2.0	0.51	519378	634178	120	120	-60	150
KBRC145	Boin	48.0	55.0	7.0	0.54	520325	635410	117	120	-60	150
KBRC146	Boin	7.0	10.0	3.0	0.24	520456	635619	124	114	-50	100
and		30.0	62.0	32.0	0.92						
including		42.0	54.0	12.0	1.78						
and incl.		59.0	61.0	2.0	0.52						
KBRC147	Boin	50.0	59.0	9.0	0.52	520424	635582	124	114	-50	102
KBRC148	Boin	56.0	58.0	2.0	0.69	520391	635546	122	114	-50	108
and		75.0	77.0	2.0	0.30						

Newcore Gold Ltd. | Enchi Gold Project

2020 - 2021 Drill Results

Table accompanies news release dated April 28, 2021



Hole ID	Zone/Deposit	From (m)	To (m)	Length (m)	Au (g/t)	UTM East	UTM North	Elevation	Azimuth °	Dip °	Hole Length (m)
KBRC149	Boin	38.0	41.0	3.0	0.36	520378	635496	120	114	-50	100
KBRC150	Boin	59.0	94.0	35.0	0.57	520335	635517	125	114	-65	148
including		65.0	91.0	26.0	0.70						
and		130.0	135.0	5.0	0.59						
and		141.0	148.0	7.0	0.42						
KBRC150A	Boin	72.0	74.0	2.0	0.59	520338	635514	122	114	-65	174
and		87.0	108.0	21.0	1.19						
and		136.0	139.0	3.0	1.01						
and		145.0	162.0	17.0	0.44						
KBRC151	Boin	9.0	20.0	11.0	2.30	519349	634402	131	120	-60	156
and		62.0	65.0	3.0	0.63						
and		136.0	144.0	8.0	0.55						
KBRC152	Boin	73.0	74.0	1.0	1.20	519292	634429	117	120	-60	258
and		209.0	213.0	4.0	1.56						
and		234.0	235.0	1.0	2.55						
KBRC153	Boin	7.0	11.0	4.0	0.68	519317	634201	122	120	-60	258
and		28.0	33.0	5.0	0.42						
and		42.0	60.0	18.0	1.21						
and		67.0	71.0	4.0	1.40						
and		110.0	114.0	4.0	0.82						
and		155.0	158.0	3.0	0.33						
and		191.0	194.0	3.0	0.39						
KBRC154	Boin	88.0	95.0	7.0	0.61	519086	633928	157	120	-60	178
and		149.0	152.0	3.0	0.27						
KBRC155	Boin	85.0	89.0	4.0	0.22	518896	633582	155	120	-60	138
and		103.0	105.0	2.0	0.89						
and		118.0	134.0	16.0	0.57						

Newcore Gold Ltd. | Enchi Gold Project

2020 - 2021 Drill Results

Table accompanies news release dated April 28, 2021



Hole ID	Zone/Deposit	From (m)	To (m)	Length (m)	Au (g/t)	UTM East	UTM North	Elevation	Azimuth °	Dip °	Hole Length (m)
KBRC155A	Boin	95.0	97.0	2.0	0.68	518900	633578	163	120	-60	204
and		110.0	113.0	3.0	0.64						
and		127.0	135.0	8.0	0.37						
KBRC156A	Boin	156.0	174.0	18.0	0.69	518480	633164	130	114	-55	270
and		187.0	191.0	4.0	1.20						
KBRC157B	Boin	150.0	162.0	12.0	0.70	518457	633065	128	114	-65	180
KBRC158	Boin	77.0	91.0	14.0	1.41	518379	632992	126	114	-60	260
KBRC159	Boin	178.0	240.0	62.0	0.73	518423	633075	127	114	-65	240
including		187.0	206.0	19.0	1.76						
and incl.		199.0	206.0	7.0	3.18						
KBRC160	Boin		no significant results			518358	632778	124	114	-60	120
KBRC161	Boin	124.0	126.0	2.0	0.37	518330	632898	128	114	-55	200
and		144.0	151.0	7.0	0.36						
and		163.0	166.0	3.0	0.31						
KBRC162	Boin	65.0	69.0	4.0	0.53	518321	632793	120	114	-60	156
and		88.0	91.0	3.0	0.68						
and		101.0	107.0	6.0	1.67						
KBRC163	Boin	11.0	14.0	3.0	0.34	519678	634811	141	114	-60	102
and		27.0	54.0	27.0	1.27						
KBRC164	Boin	19.0	25.0	6.0	1.23	519649	634822	164	114	-60	144
and		102.0	114.0	12.0	0.69						
and		128.0	132.0	4.0	0.47						
KBRC165	Boin	78.0	80.0	2.0	0.41	519895	635045	120	114	-60	102
KBRC166	Boin		no significant results			519886	635049	126	114	-60	140
KBRC167	Boin		no significant results			519836	634974	123	114	-60	120
KBRC168	Boin	1.0	6.0	5.0	0.56	519816	634986	121	114	-60	140

Newcore Gold Ltd. | Enchi Gold Project

2020 - 2021 Drill Results

Table accompanies news release dated April 28, 2021



Hole ID	Zone/Deposit	From (m)	To (m)	Length (m)	Au (g/t)	UTM East	UTM North	Elevation	Azimuth °	Dip °	Hole Length (m)
KBRC169	Boin	55.0	69.0	14.0	1.41	519973	635110	128	114	-60	138
including		62.0	68.0	6.0	2.86						
and		84.0	86.0	2.0	0.53						
and		90.0	92.0	2.0	0.53						
and		125.0	131.0	6.0	0.31						
KBRC170	Boin	45.0	49.0	4.0	0.31	520050	635185	141	114	-60	156
and		70.0	72.0	2.0	0.49						
KBRC171	Boin	77.0	78.0	1.0	1.07	520030	635195	129	114	-60	150
and		119.0	129.0	10.0	0.44						
KBRC172	Boin	78.0	84.0	6.0	0.57	520131	635252	125	114	-60	150
and		128.0	138.0	10.0	0.92						
KBRC173	Boin	85.0	87.0	2.0	0.76	520105	635265	126	114	-60	186
and		154.0	158.0	4.0	0.32						
and		166.0	179.0	13.0	0.30						
KBRC174	Boin	91.0	93.0	2.0	0.41	519957	635121	130	114	-60	162
and		153.0	154.0	1.0	0.76						
KBRC175	Boin	67.0	89.0	22.0	0.65	520291	635396	119	114	-60	150
KBRC176	Boin	70.0	77.0	7.0	0.39	520369	635575	130	114	-60	182
and		95.0	105.0	10.0	0.64						
and		130.0	140.0	10.0	0.44						
KBRC177	Boin	81.0	84.0	2.0	0.47	520320	635523	123	114	-65	228
and		108.0	109.0	1.0	0.46						
and		116.0	120.0	4.0	0.81						
and		204.0	206.0	2.0	1.39						
KBRC178	Boin	134.0	140.0	6.0	0.57	520297	635532	117	114	-65	220
		147.0	149.0	2.0	0.90						
KBRC179	Boin	92.0	97.0	5.0	0.56	520436	635631	133	114	-50	150

Newcore Gold Ltd. | Enchi Gold Project

2020 - 2021 Drill Results

Table accompanies news release dated April 28, 2021



Hole ID	Zone/Deposit	From (m)	To (m)	Length (m)	Au (g/t)	UTM East	UTM North	Elevation	Azimuth °	Dip °	Hole Length (m)
KBRC180	Boin	108.0	110.0	2.0	0.33	520415	635637	134	114	-55	170
and		126.0	129.0	3.0	0.47						
KBRC181	Boin	127.0	138.0	11.0	0.45	520393	635648	138	114	-60	216
and		142.0	145.0	3.0	0.29						
and		155.0	162.0	7.0	1.05						
KBRC182	Boin	64.0	68.0	4.0	0.35	520570	635717	137	114	-60	108
and		78.0	82.0	4.0	0.68						
and		87.0	91.0	4.0	0.70						
KBRC183	Boin	93.0	96.0	3.0	0.49	520544	635724	131	114	-60	144
and		105.0	121.0	16.0	0.30						
KBRC184	Boin	86.0	88.0	2.0	0.44	520234	635422	114	114	-60	216
and		102.0	111.0	9.0	0.82						
and		125.0	128.0	3.0	0.45						
and		145.0	166.0	21.0	0.94						
KBRC185	Boin	114.0	116.0	2.0	1.42	530284	634768	135	114	-50	204
and		137.0	204.0	67.0	0.85						
including		137.0	146.0	9.0	2.95						
KBRC186	Boin	102.0	103.0	1.0	0.30	530262	634841	146	114	-60	200
and		138.0	142.0	4.0	0.54						
and		166.0	169.0	3.0	0.32						
KBRC187	Boin	0.0	1.0	1.0	0.56	530200	635099	137	114	-60	132
and		7.0	9.0	2.0	0.30						
and		22.0	24.0	2.0	1.19						
and		102.0	106.0	4.0	0.40						
KBRC188	Boin	6.0	30.0	24.0	0.85	530122	635241	129	114	-60	150
and		46.0	51.0	5.0	0.50						

Newcore Gold Ltd. | Enchi Gold Project

2020 - 2021 Drill Results

Table accompanies news release dated April 28, 2021



Hole ID	Zone/Deposit	From (m)	To (m)	Length (m)	Au (g/t)	UTM East	UTM North	Elevation	Azimuth °	Dip °	Hole Length (m)
KBRC189	Boin	86.0	88.0	2.0	0.37	530142	635433	111	114	-60	200
and		92.0	94.0	2.0	0.51						
and		101.0	103.0	2.0	0.57						
and		121.0	123.0	2.0	0.41						
and		126.0	127.0	1.0	0.78						
and		140.0	142.0	2.0	0.37						
and		148.0	150.0	2.0	0.48						
KBRC190	Boin	103.0	111.0	8.0	0.61	530180	635591	128	114	-60	200
and		119.0	155.0	36.0	1.14						
including		124.0	142.0	18.0	1.72						
KBRC191	Boin	1.0	3.0	2.0	0.48	530297	635707	129	114	-60	100
KBRC192	Boin	116.0	118.0	2.0	0.36	530507	635817	145	114	-60	150
and		124.0	125.0	1.0	0.30						
KBRC193	Boin		no significant results			530909	635870	125	114	-50	100
KBRC194	Boin	4.0	6.0	2.0	0.31	530760	635882	119	114	-60	160
and		12.0	13.0	1.0	0.50						
and		17.0	19.0	2.0	0.46						
and		25.0	26.0	1.0	0.36						
and		102.0	103.0	1.0	0.86						
KBRC195	Boin	111.0	113.0	2.0	0.31	530910	635894	124	114	-70	208
and		145.0	146.0	1.0	0.37						
and		163.0	164.0	1.0	0.58						
KBRC196	Boin		no significant results			531135	635948	114	114	-50	100
KBRC197	Bon	21.0	23.0	2.0	0.54	531161	635960	108	114	-60	150
and		28.0	29.0	1.0	0.32						

Newcore Gold Ltd. | Enchi Gold Project

2020 - 2021 Drill Results

Table accompanies news release dated April 28, 2021



Hole ID	Zone/Deposit	From (m)	To (m)	Length (m)	Au (g/t)	UTM East	UTM North	Elevation	Azimuth °	Dip °	Hole Length (m)
KBRC198	Boin	4.0	8.0	4.0	0.39	531190	635967	107	114	-70	204
and		29.0	32.0	3.0	0.43						
and		36.0	40.0	4.0	0.34						
and		97.0	99.0	2.0	0.39						
and		193.0	194.0	1.0	0.35						
KBRC199	Boin	41.0	46.0	5.0	0.41	531096	636032	112	114	-50	108
KBRC200	Boin	59.0	62.0	3.0	0.67	531120	636055	113	114	-70	200
SWRC068	Sewum	3.0	5.0	2.0	0.28	521494	629230	193	120	-70	100
and		23.0	31.0	8.0	0.30						
and		39.0	42.0	3.0	0.35						
and		46.0	62.0	16.0	0.54						
including		51.0	57.0	6.0	0.93						
and		74.0	76.0	2.0	1.03						
SWRC069	Sewum	39.0	41.0	2.0	0.30	521442	629252	198	120	-70	125
and		50.0	59.0	9.0	0.55						
and		63.0	70.0	7.0	0.47						
and		98.0	114.0	16.0	1.20						
SWRC070	Sewum	43.0	45.0	2.0	1.41	521392	629273	193	120	-70	180
and		141.0	148.0	7.0	0.98						
SWRC071	Sewum	3.0	16.0	13.0	0.45	521347	628986	193	120	-55	100
and		38.0	43.0	5.0	0.46						
and		95.0	100.0	5.0	0.55						
SWRC072	Sewum	3.0	22.0	19.0	0.67	521408	628860	199	120	-60	150
and		46.0	84.0	38.0	0.42						
SWRC073	Sewum	0.0	28.0	28.0	1.52	520472	626241	119	130	-50	100
including		15.0	25.0	10.0	3.58						
and		36.0	42.0	6.0	1.21						

Newcore Gold Ltd. | Enchi Gold Project

2020 - 2021 Drill Results

Table accompanies news release dated April 28, 2021



Hole ID	Zone/Deposit	From (m)	To (m)	Length (m)	Au (g/t)	UTM East	UTM North	Elevation	Azimuth °	Dip °	Hole Length (m)
SWRC074	Sewum	7.0	38.0	31.0	0.84	520416	626193	105	130	-50	100
including		8.0	17.0	9.0	1.47						
and		48.0	60.0	12.0	0.71						
and		92.0	94.0	2.0	0.36						
SWRC075	Sewum	169.0	177.0	8.0	0.56	520355	626219	102	130	-60	220
SWRC076	Sewum	1.0	12.0	11.0	0.48	521308	627853	118	120	-50	120
and		39.0	88.0	49.0	0.91						
and		104.0	120.0	16.0	3.04						
SWRC077	Sewum	29.0	35.0	6.0	0.49	521268	627871	112	120	-50	180
and		54.0	56.0	2.0	0.36						
and		68.0	83.0	15.0	0.76						
and		89.0	92.0	3.0	0.62						
and		117.0	119.0	2.0	0.40						
and		126.0	131.0	5.0	0.40						
and		138.0	140.0	2.0	0.28						
and		151.0	153.0	2.0	0.35						
and		163.0	165.0	2.0	0.40						
SWRC078	Sewum		no significant results			520197	626036	83	120	-60	270
SWRC079	Sewum	207.0	209.0	2.0	0.37	520334	626242	104	120	-60	294
and		260.0	262.0	2.0	1.78						
and		278.0	284.0	6.0	0.98						
SWRC080	Sewum	149.0	159.0	10.0	1.35	520405	626279	113	120	-60	204
and		166.0	168.0	2.0	0.49						
SWRC081	Sewum		no significant results			520380	626293	104	120	-60	250

Newcore Gold Ltd. | Enchi Gold Project

2020 - 2021 Drill Results

Table accompanies news release dated April 28, 2021



Hole ID	Zone/Deposit	From (m)	To (m)	Length (m)	Au (g/t)	UTM East	UTM North	Elevation	Azimuth °	Dip °	Hole Length (m)
SWRC082	Sewum	36.0	60.0	24.0	2.02	520483	626291	115	120	-50	246
and		96.0	111.0	15.0	0.40						
and		222.0	224.0	2.0	0.55						
SWRC083	Sewum	86.0	108.0	22.0	1.97	520459	626301	124	120	-60	252
and		140.0	141.0	1.0	0.83						
SWRC084	Sewum	115.0	134.0	19.0	1.41	520472	626357	114	120	-60	250
SWRC085	Sewum	4.0	12.0	8.0	0.43	521395	628651	191	120	-50	100
and		42.0	44.0	2.0	0.36						
and		63.0	64.0	1.0	0.31						
SWRC086	Sewum	131.0	133.0	2.0	0.46	521353	628672	198	120	-50	150
SWRC087	Sewum	0.0	1.0	1.0	0.66	521415	628352	145	120	-50	120
and		84.0	86.0	2.0	0.48						
SWRC088	Sewum	7.0	18.0	11.0	0.32	521366	628375	145	120	-50	180
and		34.0	36.0	2.0	0.29						
and		56.0	63.0	7.0	0.35						
SWRC089	Sewum	12.0	13.0	1.0	0.33	521412	628244	127	120	-50	102
and		43.0	45.0	2.0	0.31						
and		47.0	49.0	2.0	0.30						
and		60.0	62.0	2.0	0.38						
SWRC090	Sewum	0.0	1.0	1.0	0.52	521370	628269	137	120	-50	156
and		66.0	68.0	2.0	0.29						
and		114.0	116.0	2.0	0.46						
and		119.0	121.0	2.0	0.73						
SWRC091	Sewum	4.0	5.0	1.0	0.32	521371	628158	107	120	-50	100
and		60.0	61.0	1.0	0.30						
and		81.0	82.0	1.0	0.40						
and		95.0	99.0	4.0	0.81						

Newcore Gold Ltd. | Enchi Gold Project

2020 - 2021 Drill Results

Table accompanies news release dated April 28, 2021



Hole ID	Zone/Deposit	From (m)	To (m)	Length (m)	Au (g/t)	UTM East	UTM North	Elevation	Azimuth °	Dip °	Hole Length (m)
SWRC092	Sewum	90.0	91.0	1.0	0.71	521270	627986	106	120	-50	220
and		140.0	148.0	8.0	0.37						
and		196.0	198.0	2.0	0.43						
SWRC093	Sewum	8.0	11.0	3.0	1.48	521364	627948	102	120	-50	168
and		32.0	49.0	17.0	0.60						
and		61.0	164.0	103.0	0.82						
SWRC094	Sewum	86.0	88.0	2.0	0.33	521225	627895	113	120	-50	254
and		91.0	94.0	3.0	0.32						
and		108.0	111.0	3.0	1.19						
and		115.0	131.0	16.0	1.26						
and		147.0	150.0	3.0	0.55						
and		158.0	164.0	6.0	1.51						
and		175.0	183.0	8.0	2.35						
and		187.0	195.0	8.0	0.71						
and		246.0	252.0	6.0	0.37						
SWRC095	Sewum	27.0	28.0	1.0	0.95	521155	627863	119	120	-50	242
and		122.0	124.0	2.0	1.63						
and		181.0	195.0	14.0	0.53						
and		233.0	238.0	5.0	1.16						
SWRC096	Sewum	0.0	1.0	1.0	2.44	521165	627779	105	120	-50	200
and		66.0	67.0	1.0	1.56						
and		83.0	84.0	1.0	0.54						
and		92.0	108.0	16.0	0.69						
and		136.0	138.0	2.0	0.40						
and		143.0	192.0	49.0	0.32						

Newcore Gold Ltd. | Enchi Gold Project

2020 - 2021 Drill Results

Table accompanies news release dated April 28, 2021



Hole ID	Zone/Deposit	From (m)	To (m)	Length (m)	Au (g/t)	UTM East	UTM North	Elevation	Azimuth °	Dip °	Hole Length (m)
SWRC097	Sewum	2.0	3.0	1.0	0.31	521164	627439	106	120	-50	180
and		22.0	23.0	1.0	0.36						
and		155.0	156.0	1.0	0.62						
SWRC098	Sewum	7.0	12.0	5.0	0.29	521375	628065	100	120	-50	150
and		59.0	60.0	1.0	0.66						
NBRC016	Nyam	23.0	29.0	6.0	1.03	530221	637264	81	300	-60	130
and		50.0	54.0	4.0	0.40						
and		68.0	86.0	18.0	0.63						
and		97.0	100.0	3.0	0.48						
and		109.0	112.0	3.0	0.55						
NBRC017	Nyam	8.0	53.0	45.0	1.38	530241	637278	69	300	-60	150
including		8.0	30.0	22.0	0.74						
and incl.		47.0	53.0	6.0	6.25						
and		64.0	66.0	2.0	1.88						
and		83.0	93.0	10.0	0.41						
and		102.0	107.0	5.0	0.54						
and		135.0	137.0	2.0	0.34						
NBRC018	Nyam	10.0	12.0	2.0	0.25	530180	637314	76	300	-60	84
and		36.0	42.0	6.0	0.32						
NBRC019	Nyam	80.0	82.0	2.0	0.35	530845	638277	81	300	-60	156
and		91.0	108.0	17.0	1.20						
NBRC020	Nyam	51.0	60.0	9.0	1.14	530506	637714	86	300	-60	150
and		73.0	102.0	29.0	0.94						
and		110.0	120.0	10.0	1.18						
and		139.0	143.0	4.0	0.41						

Newcore Gold Ltd. | Enchi Gold Project

2020 - 2021 Drill Results

Table accompanies news release dated April 28, 2021



Hole ID	Zone/Deposit	From (m)	To (m)	Length (m)	Au (g/t)	UTM East	UTM North	Elevation	Azimuth °	Dip °	Hole Length (m)
NBRC021	Nyam	15.0	17.0	2.0	0.33	530474	637679	93	300	-60	130
and		32.0	34.0	2.0	0.73						
and		50.0	54.0	4.0	1.56						
and		63.0	84.0	21.0	1.42						
and		90.0	96.0	6.0	1.26						
and		102.0	105.0	3.0	0.36						
and		109.0	119.0	10.0	0.52						
and		126.0	129.0	3.0	0.65						
NBRC022	Nyam	8.0	10.0	2.0	1.96	530435	637610	102	300	-60	150
and		70.0	90.0	20.0	1.72						
and		116.0	119.0	3.0	0.36						
NBRC023	Nyam	49.0	51.0	2.0	0.19	530712	638187	98	300	-60	80
NBRC024	Nyam	22.0	26.0	4.0	0.67	530262	637265	78	300	-60	156
and		41.0	42.0	1.0	0.89						
and		57.0	84.0	27.0	1.34						
and		93.0	102.0	9.0	3.45						
and		113.0	120.0	7.0	0.47						
and		137.0	146.0	9.0	0.38						
NBRC025	Nyam	33.0	35.0	2.0	0.51	530284	637253	78	300	-60	174
and		72.0	73.0	1.0	0.41						
and		92.0	124.0	32.0	0.84						
and		136.0	139.0	3.0	0.51						
and		151.0	162.0	11.0	0.55						

Newcore Gold Ltd. | Enchi Gold Project

2020 - 2021 Drill Results

Table accompanies news release dated April 28, 2021



Hole ID	Zone/Deposit	From (m)	To (m)	Length (m)	Au (g/t)	UTM East	UTM North	Elevation	Azimuth °	Dip °	Hole Length (m)
NBRC026	Nyam	64.0	66.0	2.0	0.36	530262	637240	75	300	-60	204
and		79.0	91.0	12.0	0.42						
and		96.0	98.0	2.0	0.86						
and		105.0	109.0	4.0	2.39						
and		116.0	117.0	1.0	0.65						
and		125.0	127.0	2.0	1.00						
and		145.0	148.0	3.0	0.57						
and		170.0	173.0	3.0	0.41						
and		177.0	179.0	2.0	0.34						
NBRC027	Nyam	3.0	9.0	6.0	2.83	530200	637284	74	300	-60	110
and		39.0	55.0	16.0	0.48						
and		60.0	62.0	2.0	0.36						
NBRC028	Nyam	32.0	36.0	4.0	0.46	530122	637161	76	300	-60	132
and		60.0	74.0	14.0	0.49						
NBRC029	Nyam	10.0	11.0	1.0	1.15	530142	637152	78	300	-60	150
and		59.0	61.0	2.0	0.82						
and		87.0	89.0	2.0	0.53						
NBRC030	Nyam	69.0	85.0	16.0	1.17	530180	637146	77	300	-60	180
and		102.0	104.0	2.0	0.53						
and		110.0	115.0	5.0	1.48						
and		150.0	155.0	5.0	0.34						
and		158.0	160.0	2.0	0.32						
NBRC031	Nyam	28.0	29.0	1.0	0.49	530297	637242	80	300	-60	210
and		104.0	106.0	2.0	0.32						
and		124.0	148.0	24.0	0.31						
and		158.0	164.0	6.0	1.48						
and		177.0	188.0	11.0	1.28						

Newcore Gold Ltd. | Enchi Gold Project

2020 - 2021 Drill Results

Table accompanies news release dated April 28, 2021



Hole ID	Zone/Deposit	From (m)	To (m)	Length (m)	Au (g/t)	UTM East	UTM North	Elevation	Azimuth °	Dip °	Hole Length (m)
NBRC032	Nyam	170.0	226.0	56.0	0.40	530507	637573	72	300	-60	258
NBRC033	Nyam	151.0	153.0	2.0	0.57	530909	638234	97	300	-60	264
and		201.0	214.0	13.0	1.00						
and		233.0	235.0	2.0	0.32						
NBRC034	Nyam	0.0	14.0	14.0	0.59	530760	638239	100	300	-60	156
NBRC035	Nyam	130.0	132.0	2.0	0.57	530910	638345	84	300	-60	156
and		135.0	137.0	2.0	0.54						
and		142.0	144.0	2.0	0.78						
NBRC036	Nyam	7.0	9.0	2.0	0.75	531135	638959	70	300	-60	102
and		87.0	88.0	1.0	0.38						
NBRC037	Nyam	6.0	7.0	1.0	0.34	531161	638947	79	300	-60	156
and		20.0	21.0	1.0	0.69						
and		68.0	77.0	9.0	0.46						
and		81.0	83.0	2.0	0.48						
NBRC038	Nyam	109.0	112.0	3.0	0.52	531190	638936	68	300	-60	204
and		122.0	126.0	4.0	0.42						
and		130.0	132.0	2.0	0.33						
NBRC039	Nyam	7.0	29.0	22.0	0.50	531096	638870	72	300	-60	114
NBRC040	Nyam	52.0	70.0	18.0	0.30	531120	638857	75	300	-60	156
and		76.0	83.0	7.0	1.05						
NBRC041	Nyam	111.0	131.0	20.0	0.39	531147	638847	74	300	-60	201
NBRC042A	Nyam	9.0	15.0	6.0	0.40	531054	638780	83	300	-60	102
and		24.0	37.0	13.0	0.62						
NBRC043	Nyam	104.0	124.0	20.0	0.31	531099	638758	76	300	-60	180
NBRC044	Nyam	8.0	10.0	2.0	0.98	530696	638123	132	300	-60	162
and		17.0	20.0	3.0	0.53						
and		41.0	67.0	26.0	1.17						

Newcore Gold Ltd. | Enchi Gold Project

2020 - 2021 Drill Results

Table accompanies news release dated April 28, 2021



Hole ID	Zone/Deposit	From (m)	To (m)	Length (m)	Au (g/t)	UTM East	UTM North	Elevation	Azimuth °	Dip °	Hole Length (m)
NBRC045	Nyam	165.0	174.0	9.0	0.81	530544	637644	115	300	-60	252
and		179.0	219.0	40.0	1.57						
including		185.0	194.0	9.0	5.40						
NBRC046	Nyam	116.0	119.0	3.0	0.52	530527	637695	104	300	-60	186
and		124.0	147.0	23.0	0.60						
NBRC047	Nyam	182.0	205.0	23.0	0.48	530572	637672	112	300	-60	247
and		212.0	216.0	4.0	0.40						
and		222.0	247.0	25.0	1.94						
including		227.0	234.0	7.0	5.78						
NKRC001	Nkwanta		no significant results			525094	633089	101	300	-55	100
KKRC017A	Kwakyekrom	45.0	48.0	3.0	0.52	528698	634833	127	298	-60	150
and		69.0	70.0	1.0	1.17						
and		89.0	120.0	31.0	0.46						
including		107.0	120.0	13.0	0.72						
KKRC018	Kwakyekrom	35.0	39.0	4.0	0.29	528658	634784	129	298	-60	120
and		86.0	92.0	6.0	0.80						
and		99.0	110.0	11.0	2.35						
KKRC019	Kwakyekrom	4.0	7.0	3.0	0.36	528611	634738	128	298	-60	120
and		58.0	78.0	20.0	0.36						
including		59.0	63.0	4.0	0.50						
and incl.		70.0	76.0	6.0	0.64						
and		88.0	92.0	4.0	0.38						
and		102.0	104.0	2.0	0.50						
KKRC020	Kwakyekrom	26.0	28.0	2.0	0.79	528598	634714	133	298	-60	110
and		44.0	47.0	3.0	0.43						
and		60.0	75.0	15.0	0.48						
and		79.0	83.0	4.0	1.04						

Newcore Gold Ltd. | Enchi Gold Project

2020 - 2021 Drill Results

Table accompanies news release dated April 28, 2021



Hole ID	Zone/Deposit	From (m)	To (m)	Length (m)	Au (g/t)	UTM East	UTM North	Elevation	Azimuth °	Dip °	Hole Length (m)
KKRC021	Kwakyekrom	52.0	69.0	17.0	0.57	528592	634693	132	298	-60	114
and		97.0	104.0	7.0	0.94						
KKRC022	Kwakyekrom	41.0	67.0	26.0	0.51	528555	634617	124	298	-60	114
including		59.0	66.0	5.0	1.59						
and		101.0	104.0	3.0	0.57						
KKRC023	Kwakyekrom	34.0	40.0	6.0	4.71	528542	634595	117	298	-60	122
and		60.0	66.0	6.0	0.34						
KKRC024	Kwakyekrom	35.0	38.0	3.0	0.77	528550	634557	104	298	-60	130
and		59.0	74.0	15.0	0.44						
and		104.0	113.0	9.0	0.23						
KKRC025	Kwakyekrom	0.0	18.0	18.0	0.45	528502	634580	103	298	-60	100
including		13.0	17.0	4.0	1.00						
and		23.0	29.0	6.0	0.57						
and		69.0	77.0	8.0	0.21						
and		89.0	100.0	11.0	0.63						
KKRC026	Kwakyekrom	20.0	24.0	4.0	1.32	528614	634705	128	298	-60	162
and		70.0	73.0	3.0	0.44						
and		80.0	94.0	14.0	1.69						
and		120.0	121.0	1.0	0.44						
and		126.0	128.0	2.0	0.63						
and		138.0	141.0	3.0	0.31						
KKRC027	Kwakyekrom	1.0	3.0	2.0	0.29	528611	634689	128	298	-60	168
and		49.0	51.0	2.0	0.42						
and		78.0	81.0	3.0	0.39						
and		84.0	101.0	17.0	0.91						

Newcore Gold Ltd. | Enchi Gold Project

2020 - 2021 Drill Results

Table accompanies news release dated April 28, 2021



Hole ID	Zone/Deposit	From (m)	To (m)	Length (m)	Au (g/t)	UTM East	UTM North	Elevation	Azimuth °	Dip °	Hole Length (m)
KKRC028	Kwakyekrom	111.0	137.0	26.0	1.43	528632	634668	126	298	-60	213
including		115.0	124.0	9.0	3.31						
and		149.0	157.0	8.0	0.34						
and		162.0	167.0	5.0	0.69						
and		176.0	180.0	4.0	0.39						
KKRC029	Kwakyekrom	21.0	45.0	24.0	0.89	528574	634699	133	298	-60	126
and		54.0	56.0	2.0	0.41						
and		116.0	118.0	2.0	0.35						
and		123.0	125.0	2.0	0.43						
KKRC030	Kwakyekrom	65.0	66.0	1.0	0.42	528653	634733	127	298	-60	180
and		68.0	69.0	1.0	0.46						
and		109.0	127.0	18.0	0.97						
and		145.0	147.0	2.0	0.43						
KKRC031	Kwakyekrom	30.0	32.0	2.0	0.78	528682	634774	131	298	-60	186
and		114.0	124.0	10.0	2.97						
and		162.0	168.0	6.0	0.88						
and		181.0	184.0	3.0	0.36						
KKRC032	Kwakyekrom	14.0	24.0	10.0	0.32	528570	634723	134	298	-60	114
and		56.0	63.0	7.0	0.40						
KKRC033	Kwakyekrom	26.0	28.0	2.0	0.33	528569	634584	109	298	-60	126
and		47.0	49.0	2.0	0.41						
and		69.0	75.0	6.0	1.19						
KKRC034	Kwakyekrom	14.0	46.0	32.0	0.68	528517	634607	124	298	-60	102
and		67.0	74.0	7.0	0.58						
and		90.0	95.0	5.0	0.34						

Newcore Gold Ltd. | Enchi Gold Project

2020 - 2021 Drill Results

Table accompanies news release dated April 28, 2021



Hole ID	Zone/Deposit	From (m)	To (m)	Length (m)	Au (g/t)	UTM East	UTM North	Elevation	Azimuth °	Dip °	Hole Length (m)
KKRC035	Kwakyekrom	0.0	7.0	7.0	0.46	528532	634631	125	298	-60	108
and		17.0	25.0	8.0	0.82						
and		39.0	41.0	2.0	0.30						
KKRC036	Kwakyekrom	19.0	22.0	3.0	0.49	528625	634796	130	298	-60	114
and		28.0	31.0	3.0	0.41						
and		54.0	61.0	7.0	1.95						
and		93.0	114.0	21.0	0.41						
KKRC037	Kwakyekrom	44.0	46.0	2.0	0.35	528661	634846	126	298	-60	110
and		88.0	92.0	4.0	0.49						
and		105.0	107.0	2.0	4.12						
KKRC038	Kwakyekrom	36.0	29.0	3.0	0.38	528738	634809	128	298	-60	200
and		97.0	111.0	14.0	0.35						
and		126.0	128.0	2.0	0.37						
and		131.0	143.0	12.0	0.83						
and		153.0	170.0	17.0	1.44						
KKRC039	Kwakyekrom	28.0	38.0	10.0	0.31	528692	634909	129	298	-60	129
KKRC040	Kwakyekrom	12.0	39.0	27.0	0.34	528741	634889	127	298	-60	162
and		95.0	99.0	4.0	0.29						
and		107.0	109.0	2.0	1.29						
and		116.0	120.0	4.0	0.47						
KKRC041	Kwakyekrom	0.0	53.0	53.0	0.79	528466	634474	104	298	-60	120
and		70.0	84.0	14.0	0.45						
KKRC042	Kwakyekrom	0.0	2.0	2.0	0.33	528440	634487	108	298	-60	100
and		38.0	39.0	1.0	0.50						
and		48.0	50.0	2.0	0.35						
and		56.0	62.0	6.0	0.47						

Newcore Gold Ltd. | Enchi Gold Project

2020 - 2021 Drill Results

Table accompanies news release dated April 28, 2021



Hole ID	Zone/Deposit	From (m)	To (m)	Length (m)	Au (g/t)	UTM East	UTM North	Elevation	Azimuth °	Dip °	Hole Length (m)
KKRC043	Kwakyekrom	73.0	83.0	10.0	1.51	528580	634606	123	298	-60	144
and		89.0	92.0	3.0	1.16						
and		138.0	140.0	2.0	0.90						
KJRC011	Kojina Hill		no significant results			528887	637281	110	300	-65	170
KJRC012	Kojina Hill	218.0	222.0	4.0	1.34	528887	637281	110	300	-75	252
and		229.0	230.0	1.0	0.83						
KJRC013	Kojina Hill	6.0	13.0	7.0	0.33	528897	637243	123	300	-60	170
and		83.0	113.0	30.0	0.39						
including		83.0	91.0	8.0	0.51						
and incl.		94.0	99.0	5.0	0.56						
and incl.		109.0	113.0	4.0	0.57						
KJRC014	Kojina Hill	57.0	60.0	3.0	0.37	528897	637243	123	300	-75	288
and		209.0	212.0	3.0	0.37						
KJRC015	Kojina Hill	126.0	127.0	1.0	0.40	528867	637240	130	300	-60	192
and		139.0	140.0	1.0	0.42						
KJRC016	Kojina Hill	174.0	175.0	1.0	0.31	528871	637239	127	300	-75	252
and		208.0	209.0	1.0	0.30						
and		244.0	246.0	2.0	0.33						
KJRC017	Kojina Hill	108.0	112.0	4.0	0.86	528838	637203	149	300	-65	162
and		119.0	122.0	3.0	0.28						
and		125.0	145.0	20.0	1.09						
including		125.0	129.0	4.0	2.52						
and		155.0	156.0	1.0	0.47						

Newcore Gold Ltd. | Enchi Gold Project

2020 - 2021 Drill Results

Table accompanies news release dated April 28, 2021



Hole ID	Zone/Deposit	From (m)	To (m)	Length (m)	Au (g/t)	UTM East	UTM North	Elevation	Azimuth °	Dip °	Hole Length (m)
KJRC018	Kojina Hill	48.0	50.0	2.0	0.30	528860	637219	141	300	-65	150
and		98.0	102.0	4.0	0.68						
KJRC019	Kojina Hill	81.0	89.0	8.0	0.50	528871	637239	129	270	-70	282
and		121.0	122.0	1.0	0.60						

1. Intervals reported are core lengths with true width estimated to be 75 - 85%.
2. Length-weighted averages from uncut assays.
3. All drilling completed by independent contractor.
4. All drilling samples sealed on site and delivered directly to independent lab Intertek Mineral Limited located in Tarkwa, Ghana for preparation and 50g Fire Assay with AAS finish.
5. QA/QC procedures include industry standard inclusion of standards, blanks, and duplicates in all sample batches.