



### **Newcore Gold Drilling Intersects 2.33 g/t Gold Over 14.0 Metres, including 20.54 g/t Gold Over 1.0 Metre, at the Enchi Gold Project, Ghana**

*Additional Drilling on the Sewum Gold Deposit Continues to Encounter Multiple Gold Mineralised Zones, Including Deeper High-Grade Structures*

September 21, 2021

TSX-V: NCAU, OTCQX: NCAUF

**Vancouver, BC - Newcore Gold Ltd. ("Newcore" or the "Company")** (TSX-V: NCAU, OTCQX: NCAUF) is pleased to announce additional drill results from the 90,000 metre drill program underway at the Company's 100% owned Enchi Gold Project ("Enchi" or the "Project") in Ghana. Drilling at the Sewum Gold Deposit ("Sewum") at Enchi has intersected 2.33 grams per tonne gold ("g/t Au") over 14.0 metres ("m") from 104 m, including 20.54 g/t Au over 1.0 m from 116 m in the sulphides. Drilling at Sewum continues to encounter multiple gold mineralised structures, with these results highlighting the potential for deeper high-grade structures outside of the existing pit constrained resource.

#### **Highlights from Drilling at Sewum**

- **Drilling on the central portion of Sewum, at Sewum Checkerboard Hill (CH), encountered multiple zones of mineralisation, including a high-grade core.**
  - Hole SWDD071B intersected a high-grade mineralised structure grading 2.33 g/t Au over 14.0 m from 104 m (sulphide zone), including 4.08 g/t Au over 7.0 m from 110 m which included 20.54 g/t Au over 1.0 m from 116 m.
- **Drilling on the northern portion of Sewum, at Sewum Ridge, intercepted the deepest gold mineralisation encountered to date at Enchi.**
  - Hole SWDD075 intersected 0.98 g/t Au over 15.6 m from 350 m (sulphide zone), including 2.00 g/t Au over 6.6 m from 359 m, one of the deepest gold mineralised structures tested to date on the Enchi Gold Project.
- **Drilling at the southern extent of Sewum, at Sewum Extension, continues to intersect multiple zones of gold mineralisation.**
  - Hole SWDD077 intersected a series of gold mineralised structures with 1.23 g/t Au over 9.0 m from 224 m (sulphide zone), including 1.98 g/t Au over 3.1 m from 227 m.
- **Newcore is fully funded to complete a 90,000 metre drill program at Enchi, focused on unlocking the multi-million ounce potential of the Project.**

Greg Smith, Vice President of Exploration of Newcore stated, "We are very pleased with the continued success of our ongoing drill program at Enchi. Sewum is currently the largest defined gold deposit on the Project, with these results continuing to highlight the potential for resource growth both along strike and at depth. Drilling continues to encounter near-surface mineralisation outside of the resource area, while deeper drilling is now consistently encountering high-grade core structures within the sulphides, with these results encountering the deepest gold mineralisation intercepted to date at Enchi. We look forward to continuing

to drill at the numerous targets at Enchi to prove out the multi-million-ounce potential of this district-scale project."

This news release reports results for 11 Diamond Drill ("DD") holes totalling 3,658.7 m (SWDD070A to SWDD080) targeting the Sewum Gold Deposit, with all holes intersecting gold mineralisation. Results are pending from an additional three DD holes totalling 1,061.7 m that have been completed at Sewum.

Select assay results from the 11 holes of the drill program reported in this release are below:

**Table 1 - Enchi Gold Project Drill Highlights**

Hole ID	Zone/Deposit	From (m)	To (m)	Length (m)	Au (g/t)
<b>SWDD071B</b>	Sewum (CH)	104.0	118.0	<b>14.0</b>	<b>2.33</b>
including		110.0	117.0	<b>7.0</b>	<b>4.08</b>
including		116.0	117.0	<b>1.0</b>	<b>20.54</b>
and		123.0	127.0	<b>4.0</b>	<b>0.67</b>
and		277.6	291.0	<b>13.4</b>	<b>0.40</b>
<b>SWDD073</b>	Sewum (CH)	195.5	202.0	<b>6.5</b>	<b>1.61</b>
and		231.2	233.0	<b>1.8</b>	<b>1.24</b>
and		273.3	284.5	<b>11.2</b>	<b>0.63</b>
including		283.0	284.5	<b>1.5</b>	<b>2.38</b>
<b>SWDD075</b>	Sewum (Ridge)	2.0	18.0	<b>16.0</b>	<b>0.58</b>
and		350.0	365.6	<b>15.6</b>	<b>0.98</b>
including		359.0	365.6	<b>6.6</b>	<b>2.00</b>
<b>SWDD076</b>	Sewum (Ext.)	130.0	146.0	<b>16.0</b>	<b>0.54</b>
including		131.0	132.0	<b>1.0</b>	<b>1.64</b>
<b>SWDD077</b>	Sewum (Ext.)	224.0	233.0	<b>9.0</b>	<b>1.23</b>
including		227.0	230.1	<b>3.1</b>	<b>1.98</b>

Notes:

1. See detailed table for complete results
2. Intervals reported are hole lengths with true width estimated to be 75 - 85%
3. Length-weighted averages from uncut assays

A plan map showing the drill hole locations can be viewed at:

[https://newcoregold.com/site/assets/files/5733/2021\\_09-ncau-nr-enchi-plan-maps-l.pdf](https://newcoregold.com/site/assets/files/5733/2021_09-ncau-nr-enchi-plan-maps-l.pdf)

Cross sections showing drill results and highlights for holes SWDD071B and SWDD073 can be viewed at:

[https://newcoregold.com/site/assets/files/5733/2021\\_09\\_21-ncau-crosssections-l.pdf](https://newcoregold.com/site/assets/files/5733/2021_09_21-ncau-crosssections-l.pdf)

A complete list of the 2020 - 2021 drill results to date, including hole details, can be viewed at:

[https://newcoregold.com/site/assets/files/5733/2021\\_09-ncau-enchi-2020-2021-drill-results-l.pdf](https://newcoregold.com/site/assets/files/5733/2021_09-ncau-enchi-2020-2021-drill-results-l.pdf)

Five DD holes (SWDD070A to SWDD074) were completed in the central portion of Sewum, at the Sewum Checkerboard Hill (CH) deposit area. Drilling in this area tested a strike length of 500 metres, with drilling near the northern extent of the deposit encountering multiple zones

of gold mineralisation including a high-grade core. Hole SWDD071B intersected a mineralised structure grading 2.33 g/t Au over 14.0 m from 104 m (sulphide zone), which included 4.08 g/t Au over 7.0 m from 110 m and a high-grade core structure of 20.54 g/t Au over 1.0 m from 116 m. Hole SWDD071B intersected additional gold mineralised structures within the sulphides, returning 0.67 g/t Au over 4.0 m from 123 m and 0.40 g/t Au over 13.4 m from 277.6 m. Hole SWDD073 collared 200 metres north of SWDD071B also intersected a series of gold mineralised structures with 1.61 g/t Au over 6.5 m from 195.5 m, 1.24 g/t Au over 1.8 m from 231.2 m, and 0.63 g/t Au over 11.2 m from 273.3 m which included 2.38 g/t Au over 1.5 m from 283.0 m. The gold mineralisation intersected in hole SWDD073 is interpreted to represent the down plunge continuation of the mineralisation intersected at Checkerboard Hill in hole SWDD071B.

Two DD holes (SWDD075 and SWDD079A) were completed in the northern portion of Sewum, at the Sewum Ridge deposit area, with drilling testing 600 metres of strike length. Hole SWDD075 intersected near surface oxide mineralisation which returned 0.58 g/t Au over 16.0 m from 2.0 m (oxide zone) associated with the main gold mineralised structure. An additional intercept in this area included a deeper zone of 0.98 g/t Au over 15.6 m from 350.0 m (sulphide zone), including 2.00 g/t Au over 6.6 m from 359.0 m, representing the deepest gold mineralised structure tested and is associated with an eastern structure which remains open and largely untested by previous drilling.

Four DD holes (SWDD076 to SWDD078, and SWDD080) were completed within the southern limit of Sewum, at Sewum Extension. Drilling in this area tested the down dip continuity along a strike length of 400 metres. Hole SWDD077 intersected a series of gold mineralised structures including 1.23 g/t Au over 9.0 m from 224 m (sulphide zone), including 1.98 g/t Au over 3.1 m from 227 m. Hole SWDD076 collared 100 metres north intersected 0.54 g/t Au over 16.0 m from 130 m (sulphide zone), including 1.64 g/t Au over 1.0 m from 131 m.

A total of 70,688 metres in 396 holes have been completed as part of the ongoing 2020 - 2021 drill program at Enchi. For the total planned 90,000 metre drill program, assay results have now been received and released for 316 holes representing 54,314 metres.

### **Enchi Gold Project Mineral Resource Estimate**

The Enchi Gold Project hosts a pit constrained Inferred Mineral Resource of 70.4 million tonnes grading 0.62 g/t Au containing 1.41 million ounces gold (see Newcore news release dated [June 8, 2021](#)). Mineral resource estimation practices are in accordance with CIM Estimation of Mineral Resource and Mineral Reserve Best Practice Guidelines (November 29, 2019) and follow CIM Definition Standards for Mineral Resources and Mineral Reserves (May 10, 2014), that are incorporated by reference into National Instrument 43-101 ("NI 43-101"). The Mineral Resource Estimate was prepared by independent qualified person Todd McCracken, P. Geo. of BBA E&C Inc. The technical report, titled "Preliminary Economic Assessment for the Enchi Gold Project, Enchi, Ghana" has an effective date of June 8, 2021 and is available under the Company's profile on SEDAR at [www.sedar.com](http://www.sedar.com).

### **2020 - 2021 Enchi Drilling Program**

A 90,000 metre discovery and resource expansion drilling program is underway at Enchi. The program includes both RC and diamond drilling and will include the first deeper drilling

planned on the Project. This drill program includes testing extensions of the existing resource areas while also testing a number of high priority exploration targets outside of the Inferred Mineral Resource. Drilling is focused on step out extensions and exploration drilling at the Sewum, Boin, Nyam and Kwakyekrom Deposits. Additional drilling is planned at previously drilled zones that are outside of the resource area (Kojina Hill and Eradi), along with first pass drilling to test a series of kilometre-scale gold-in-soil anomalous zones with no prior drilling (Nkwanta, Sewum South and other anomalies). All zones represent high priority targets based on geological, geochemical and geophysical surface work and previous trenching and drilling.

### Sewum Gold Zone

The Sewum Gold Deposit is the largest of the four deposits which comprise the pit constrained Inferred Mineral Resource Estimate at Enchi, with Sewum hosting approximately 51% of the currently defined resource (41.0 million tonnes grading 0.55 g/t Au containing 725,200 ounces). Sewum is located 15 kilometres south of the town of Enchi, with nearby roads and power and further access provided by a series of drill roads. Sewum is outlined on surface by a six-kilometre-long and one-to-two-kilometre-wide gold in soil anomaly. An airborne geophysical anomaly coincident with the Sewum Deposit defines a series of sub parallel and intersecting structures. To date, approximately 50% of the gold-in-soil anomaly is untested by drilling. As part of the current drill program a total of 60 holes totalling 13,785 metres have been completed at Sewum.

### Drill Hole Locations

**Table 2 - Enchi Gold Project Drill Hole Location Details**

Hole ID	UTM East	UTM North	Elevation	Azimuth °	Dip °	Length (m)
SWDD070A	521129	627940	118	120	-57	320.4
SWDD071B	521312	627963	100	120	-55	374.5
SWDD072	521119	627799	111	120	-55	259.8
SWDD073	521264	628205	131	120	-55	350.1
SWDD074	521313	628290	143	120	-55	329.2
SWDD075	521303	628694	195	120	-52	389.3
SWDD076	520522	626435	107	120	-55	275.1
SWDD077	520396	626389	102	120	-55	302.1
SWDD078	520300	626255	99	120	-60	371.4
SWDD079A	521289	628910	174	120	-60	404.6
SWDD080	520308	626179	87	120	-70	282.2

### Share Issuance for Drill Services

Newcore has issued an additional 334,153 payment shares in settlement of \$211,218 in drilling services pursuant to the agreement with Geodrill Limited that was announced on [April 28, 2021](#). The shares were issued on August 16, 2021 at a deemed price per share of \$0.6321, equal to the 15-day VWAP immediately prior to the issuance of the shares, and are subject to a hold period expiring four months following the date of issuance. This is the final tranche of shares issued under this agreement.

## **COVID-19 Protocols**

Newcore's first priority is the health and safety of all employees, contractors, and local communities. The Company is following all Ghana guidelines and requirements related to COVID-19. The Company has implemented COVID-19 protocols for its ongoing drill program consisting of the mandatory use of personal protective equipment (including facemasks for all employees), maintaining social distancing, frequent hand washing, and daily temperature checks at the start of each shift.

## **Newcore Gold Best Practice**

Newcore is committed to best practice standards for all exploration, sampling and drilling activities. Drilling was completed by an independent drilling firm using industry standard RC and Diamond Drill equipment. Analytical quality assurance and quality control procedures include the systematic insertion of blanks, standards and duplicates into the sample strings. Samples are placed in sealed bags and shipped directly to Intertek Labs located in Tarkwa, Ghana for 50 gram gold fire assay.

## **Qualified Person**

Mr. Gregory Smith, P. Geo, Vice President of Exploration of Newcore, is a Qualified Person as defined by NI 43-101, and has reviewed and approved the technical data and information contained in this news release. Mr. Smith has verified the technical and scientific data disclosed herein and has conducted appropriate verification on the underlying data including confirmation of the drillhole data files against the original drillhole logs and assay certificates.

## **About Newcore Gold Ltd.**

Newcore Gold is advancing its Enchi Gold Project located in Ghana, Africa's largest gold producer<sup>(1)</sup>. The Project currently hosts an Inferred Mineral Resource of 1.41 million ounces of gold at 0.62 g/t<sup>(2)</sup>. Newcore Gold offers investors a unique combination of top-tier leadership, who are aligned with shareholders through their 27% equity ownership, and prime district scale exploration opportunities. Enchi's 216 km<sup>2</sup> land package covers 40 kilometres of Ghana's prolific Bibiani Shear Zone, a gold belt which hosts several 5 million-ounce gold deposits, including Kinross' Chirano mine 50 kilometers to the north. Newcore's vision is to build a responsive, creative and powerful gold enterprise that maximizes returns for shareholders.

## **On Behalf of the Board of Directors of Newcore Gold Ltd.**

Luke Alexander  
*President, CEO & Director*

### **For further information, please contact:**

Mal Karwowska | Vice President, Corporate Development and Investor Relations  
+1 604 484 4399  
info@newcoregold.com  
[www.newcoregold.com](http://www.newcoregold.com)

(1) Source: Production volumes for 2020 as sourced from the World Gold Council

(2) Notes for Inferred Mineral Resource Estimate:

1. CIM definition standards were followed for the resource estimate.

2. The 2021 resource models used ordinary kriging (OK) grade estimation within a three-dimensional block model with mineralised zones defined by wireframed solids and constrained by pits shell for Sewum, Boin and Nyam. KwakyeKrom used Inverse Distance squared (ID2).
3. A base cut-off grade of 0.2 g/t Au was used with a capping of gold grades varied by deposit and zone.
4. A US\$1,650/ounce gold price, open pit with heap leach operation was used to determine the cut-off grade of 0.2 g/t Au. Mining costs of US\$1.40 for oxides, US\$2.10 for transition, and US\$2.60 for fresh rock per mined tonne and G&A and milling costs of US\$6.83/milled tonne. The Inferred Mineral Resource Estimate is pit constrained.
5. Metallurgical recoveries have been applied to four individual deposits and in each case three material types (oxide, transition, and fresh rock) with average recoveries of 77% for Sewum, 79% for Boin, 60% for Nyam and 72% for KwakyeKrom.
6. A density of 2.20 g/cm<sup>3</sup> for oxide, 2.45 g/cm<sup>3</sup> for transition, and 2.70 g/cm<sup>3</sup> for fresh rock was applied.
7. Optimization pit slope angles varied based on the rock types.
8. Mineral Resources that are not mineral reserves do not have economic viability. Numbers may not add due to rounding.
9. These numbers are from the technical report titled "Preliminary Economic Assessment for the Enchi Gold Project, Enchi, Ghana", with an effective date of June 8, 2021, prepared for Newcore Gold by BBA E&C Inc. in accordance with National Instrument 43-101 *Standards of Disclosure for Mineral Projects* and is available under Newcore's SEDAR profile at [www.sedar.com](http://www.sedar.com).

*Neither the TSX Venture Exchange nor its Regulation Services Provider (as that term is defined in the policies of the TSX Venture Exchange) accepts responsibility for the adequacy or accuracy of this release.*

### **Cautionary Note Regarding Forward-Looking Statements**

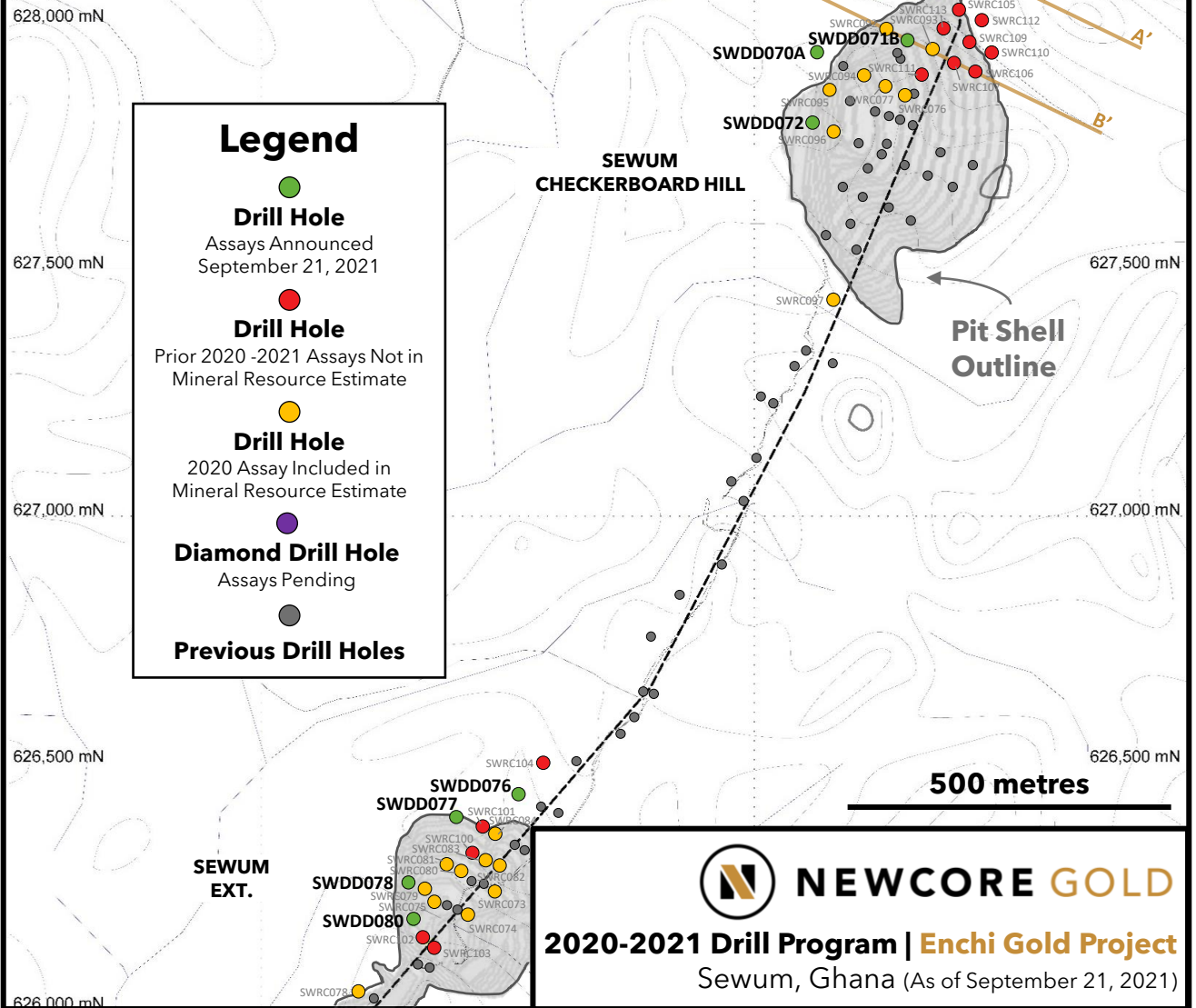
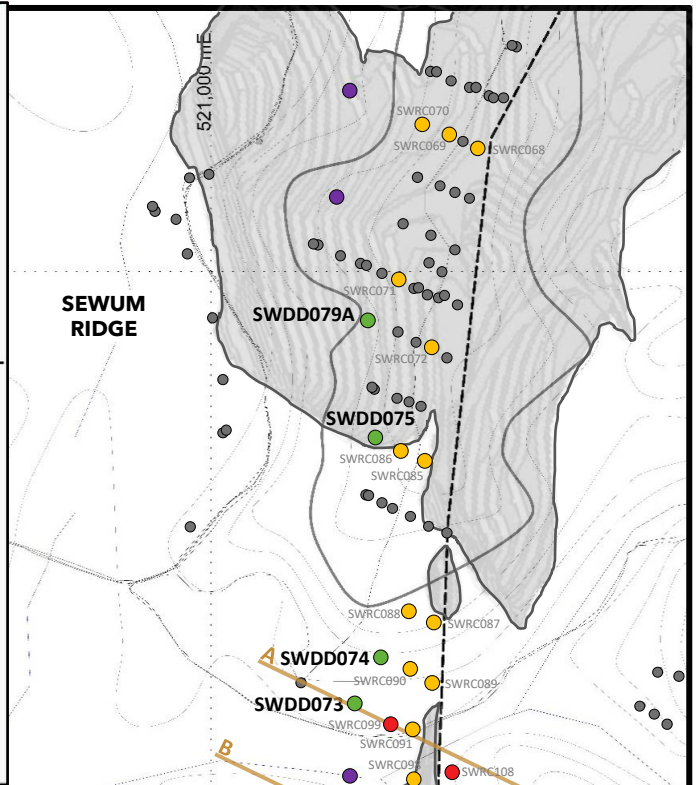
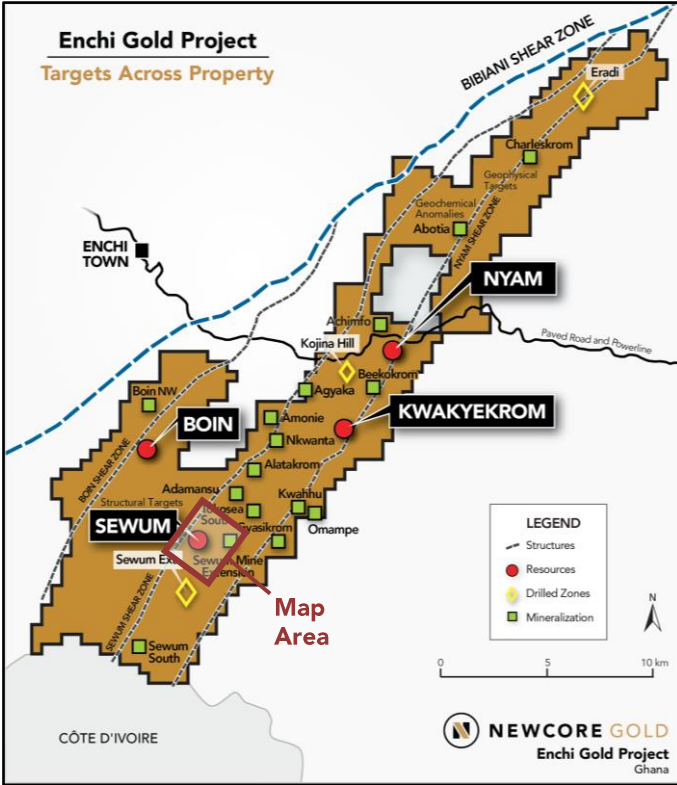
*This news release includes statements that contain "forward-looking information" within the meaning of the applicable Canadian securities legislation ("forward-looking statements"). All statements, other than statements of historical fact, are forward-looking statements and are based on expectations, estimates and projections as at the date of this news release. Any statement that involves discussion with respect to predictions, expectations, beliefs, plans, projections, objectives, assumptions, future events or performance (often, but not always using phrases such as "plans", "expects", "is expected", "budget", "scheduled", "estimates", "forecasts", "intends", "anticipates", or "believes" or variations (including negative variations) of such words and phrases, or state that certain actions, events or results "may", "could", "would", "might" or "will" be taken, occur or be achieved) are not statements of historical fact and may be forward-looking statements. In this news release, forward-looking statements relate, among other things, to: statements about the estimation of mineral resources; results of our ongoing drill campaign, magnitude or quality of mineral deposits; anticipated advancement of mineral properties or programs; and future exploration prospects.*

*These forward-looking statements, and any assumptions upon which they are based, are made in good faith and reflect our current judgment regarding the direction of our business. The assumptions underlying the forward-looking statements are based on information currently available to Newcore. Although the forward-looking statements contained in this news release are based upon what management of Newcore believes, or believed at the time, to be reasonable assumptions, Newcore cannot assure its shareholders that actual results will be consistent with such forward-looking statements, as there may be other factors that cause results not to be as anticipated, estimated or intended. Forward-looking information also involves known and unknown risks, uncertainties and other factors which may cause the actual results, performance or achievements of the Company to be materially different from any future results, performance or achievements expressed or implied by the forward-looking information. Such factors include, among others: risks related to the speculative nature of the Company's business; the Company's formative stage of development; the Company's financial position; possible variations in mineralisation, grade or recovery rates; actual results of current exploration activities; fluctuations in general macroeconomic conditions; fluctuations in securities markets; fluctuations in spot and forward prices of gold and other commodities; fluctuations in currency markets (such as the Canadian dollar to United States dollar exchange rate); change in national and local government, legislation,*

*taxation, controls, regulations and political or economic developments; risks and hazards associated with the business of mineral exploration, development and mining (including environmental hazards, unusual or unexpected geological formations); the presence of laws and regulations that may impose restrictions on mining; employee relations; relationships with and claims by local communities; the speculative nature of mineral exploration and development (including the risks of obtaining necessary licenses, permits and approvals from government authorities); and title to properties.*

*Forward-looking statements contained herein are made as of the date of this news release and the Company disclaims any obligation to update any forward-looking statements, whether as a result of new information, future events or results, except as may be required by applicable securities laws. There can be no assurance that forward-looking information will prove to be accurate, as actual results and future events could differ materially from those anticipated in such statements. Accordingly, readers should not place undue reliance on forward-looking information.*

**Enchi Gold Project**  
Targets Across Property





SWDD071B

SWRC107

SWRC092

SWRC093

SWRC106

surface

100 Elev

1.48 g/t Au over 3 m

0.63 g/t Au over 77 m

Oxide Zone

0.60 g/t Au over 17 m

including 0.72 g/t Au over 36 m  
and incl. 1.82 g/t Au over 9 m

50 Elev

0.63 g/t Au over 1.5 m

including 0.70 g/t Au over 32 m  
and incl. 1.22 g/t Au over 14 m

0.71 g/t Au over 1 m

2.33 g/t Au over 14 m

including 4.08 g/t Au over 7 m

and incl. 20.54 g/t Au over 1 m

0.82 g/t Au over 103 m

0 Elev

0.67 g/t Au over 4 m

0.37 g/t Au over 8 m

0.93 g/t Au over 2 m

0.33 g/t Au over 4.1 m

0.39 g/t Au over 47 m

-50 Elev

0.43 g/t Au over 2 m

220

0.31 g/t Au over 1 m

234

-100 Elev

0.30 g/t Au over 2 m

0.40 g/t Au over 13.4 m

0 25 50 m

LEGEND

Mineralized Zone

Drillhole trace

2021 Resource Pit Shell  
(US\$1,650/oz Au)



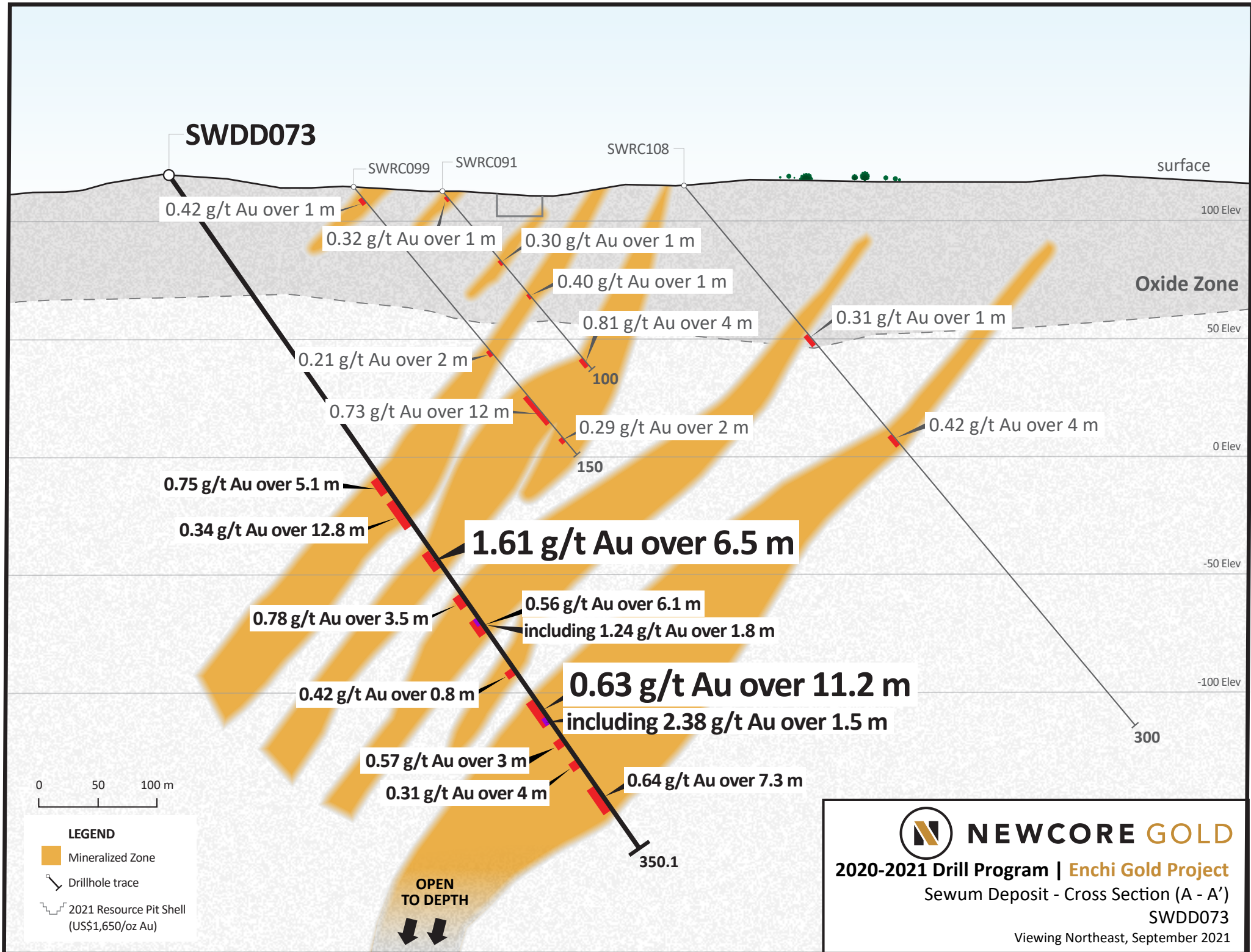
NEWCORE GOLD

2020-2021 Drill Program | Enchi Gold Project

Sewum Deposit - Cross Section (B - B')

SWRC093, SWRC107, SWDD071B

Viewing Northeast, September 2021



## Newcore Gold Ltd. | Enchi Gold Project

2020 - 2021 Drill Results

Table accompanies news release dated September 21, 2021



### Drill Results Released September 21, 2021

Hole ID	Zone/Deposit	From (m)	To (m)	Length (m)	Au (g/t)	UTM East	UTM North	Elevation	Azimuth °	Dip °	Hole Length (m)
<b>SWDD070A</b>	Sewum	131.4	131.8	0.4	2.48	521129	627940	118	120	-57	320.4
and		212.4	213.0	0.6	0.42						
and		243.0	244.0	1.0	0.38						
and		285.5	298.2	12.7	0.17						
<b>SWDD071B</b>	Sewum	77.5	79.0	1.5	0.63	521312	627963	100	120	-55	374.5
and		104.0	118.0	<b>14.0</b>	<b>2.33</b>						
including		110.0	117.0	<b>7.0</b>	<b>4.08</b>						
and incl.		116.0	117.0	<b>1.0</b>	<b>20.54</b>						
and		123.0	127.0	<b>4.0</b>	<b>0.67</b>						
and		149.0	151.0	2.0	0.93						
and		162.0	166.1	4.1	0.33						
and		171.0	172.0	1.0	0.31						
and		242.0	244.0	2.0	0.30						
and		277.6	291.0	<b>13.4</b>	<b>0.40</b>						
<b>SWDD072</b>	Sewum	134.0	135.4	1.4	0.23	521119	627799	111	120	-55	259.8
and		184.3	186.2	1.9	0.27						
and		221.3	228.0	6.7	0.79						

## Newcore Gold Ltd. | Enchi Gold Project

2020 - 2021 Drill Results

Table accompanies news release dated September 21, 2021



Hole ID	Zone/Deposit	From (m)	To (m)	Length (m)	Au (g/t)	UTM East	UTM North	Elevation	Azimuth °	Dip °	Hole Length (m)
<b>SWDD073</b>	Sewum	159.0	164.1	5.1	0.75	521264	628205	131	120	-55	350.1
and		168.0	180.8	12.8	0.34						
and		195.5	202.0	<b>6.5</b>	<b>1.61</b>						
and		220.2	223.7	3.5	0.78						
and		231.2	237.3	6.1	0.56						
including		231.2	233.0	<b>1.8</b>	<b>1.24</b>						
and		257.2	258.0	0.8	0.42						
and		273.3	284.5	<b>11.2</b>	<b>0.63</b>						
including		283.0	284.5	<b>1.5</b>	<b>2.38</b>						
and		294.0	297.0	3.0	0.57						
and		303.0	307.0	4.0	0.31						
and		319.7	327.0	7.3	0.64						
<b>SWDD074</b>	Sewum	6.0	9.0	3.0	0.26	521313	628290	143	120	-55	329.2
and		57.2	60.4	3.2	0.42						
and		107.0	108.0	1.0	0.30						
and		114.0	115.0	1.0	1.01						
and		149.4	150.0	0.6	0.65						
and		236.1	237.4	1.3	0.28						
<b>SWDD075</b>	Sewum	2.0	18.0	<b>16.0</b>	<b>0.58</b>	521303	628694	195	120	-52	389.3
and		101.0	108.3	7.3	0.31						
and		125.0	125.9	0.9	1.75						
and		344.3	345.0	0.7	1.05						
and		350.0	365.6	<b>15.6</b>	<b>0.98</b>						
including		359.0	365.6	<b>6.6</b>	<b>2.00</b>						
<b>SWDD076</b>	Sewum	130.0	146.0	<b>16.0</b>	<b>0.54</b>	520522	626435	107	120	-55	275.1
including		131.0	132.0	<b>1.0</b>	<b>1.64</b>						
and		160.0	161.0	1.0	0.49						

## Newcore Gold Ltd. | Enchi Gold Project

2020 - 2021 Drill Results

Table accompanies news release dated September 21, 2021



Hole ID	Zone/Deposit	From (m)	To (m)	Length (m)	Au (g/t)	UTM East	UTM North	Elevation	Azimuth °	Dip °	Hole Length (m)
<b>SWDD077</b>	Sewum	148.0	149.0	1.0	0.53	520396	626389	102	120	-55	302.1
and		224.0	233.0	<b>9.0</b>	<b>1.23</b>						
including		227.0	230.1	<b>3.1</b>	<b>1.98</b>						
and		243.0	245.0	2.0	0.45						
and		253.3	255.0	1.7	0.74						
and		289.2	290.1	0.9	0.32						
<b>SWDD078</b>	Sewum	250.0	250.8	0.8	0.63	520300	626255	99	120	-60	371.4
and		324.0	331.0	7.0	0.39						
<b>SWDD079A</b>	Sewum	39.4	56.0	16.6	0.20	521289	628910	174	120	-60	404.6
and		62.2	72.0	9.8	0.21						
and		75.8	79.0	3.2	0.38						
and		120.0	132.0	12.0	0.33						
and		173.6	187.0	13.4	0.52						
and		191.9	195.0	3.1	0.56						
and		209.9	212.0	2.1	0.37						
and		220.2	221.0	0.8	0.37						
and		307.0	310.0	3.0	0.28						
and		313.0	314.0	1.0	0.47						
and		404.0	405.0	1.0	0.34						
<b>SWDD080</b>	Sewum	214.0	215.0	1.0	0.52						
and		247.1	249.0	1.9	0.42						

1. Intervals reported are hole lengths with true width estimated to be 75 - 85%.

2. Length-weighted averages from uncut assays.

3. All drilling completed by independent contractor.

4. All drilling samples sealed on site and delivered directly to independent lab Intertek Mineral Limited located in Tarkwa, Ghana for preparation and 50g Fire Assay with AAS finish.

5. QA/QC procedures include industry standard inclusion of standards, blanks, and duplicates in all sample batches.

[SEE NEXT PAGE FOR PREVIOUSLY RELEASED RESULTS]

## Newcore Gold Ltd. | Enchi Gold Project

2020 - 2021 Drill Results

Table accompanies news release dated September 21, 2021



### Previously Released Drill Results

Hole ID	Zone/Deposit	From (m)	To (m)	Length (m)	Au (g/t)	UTM East	UTM North	Elevation	Azimuth °	Dip °	Hole Length (m)
<b>KBRC138</b>	Boin	92.0	96.0	4.0	1.05	518408	632972	147	114	-60	97
<b>KBRC138A</b>	Boin	133.0	135.0	2.0	0.57	518405	632976	147	114	-60	216
and		146.0	148.0	2.0	0.65						
<b>KBRC139</b>	Boin	1.0	17.0	<b>16.0</b>	<b>0.69</b>	518700	633234	130	120	-60	80
<b>KBRC140</b>	Boin	4.0	7.0	3.0	0.31	519121	633708	155	120	-60	80
and		13.0	14.0	1.0	0.44						
<b>KBRC141</b>	Boin	10.0	21.0	11.0	0.34	519018	633704	156	114	-50	120
and		48.0	95.0	<b>47.0</b>	<b>1.67</b>						
including		49.0	58.0	<b>9.0</b>	<b>2.96</b>						
and incl.		75.0	85.0	<b>10.0</b>	<b>3.63</b>						
<b>KBRC142</b>	Boin	1.0	4.0	3.0	0.27	518558	633239	129	114	-50	156
and		131.0	150.0	<b>19.0</b>	<b>0.43</b>						
including		131.0	142.0	11.0	0.60						
<b>KBRC142B</b>	Boin	121.0	130.0	9.0	0.30	518573	633233	137	114	-50	238
<b>KBRC143</b>	Boin	3.0	17.0	14.0	0.56	519395	634172	120	114	-60	108
<b>KBRC144</b>	Boin	146.0	148.0	2.0	0.51	519378	634178	120	120	-60	150
<b>KBRC145</b>	Boin	48.0	55.0	7.0	0.54	520325	635410	117	120	-60	150
<b>KBRC146</b>	Boin	7.0	10.0	3.0	0.24	520456	635619	124	114	-50	100
and		30.0	62.0	<b>32.0</b>	<b>0.92</b>						
including		42.0	54.0	<b>12.0</b>	<b>1.78</b>						
and incl.		59.0	61.0	2.0	0.52						
<b>KBRC147</b>	Boin	50.0	59.0	9.0	0.52	520424	635582	124	114	-50	102
<b>KBRC148</b>	Boin	56.0	58.0	2.0	0.69	520391	635546	122	114	-50	108
and		75.0	77.0	2.0	0.30						

## Newcore Gold Ltd. | Enchi Gold Project

2020 - 2021 Drill Results

Table accompanies news release dated September 21, 2021



Hole ID	Zone/Deposit	From (m)	To (m)	Length (m)	Au (g/t)	UTM East	UTM North	Elevation	Azimuth °	Dip °	Hole Length (m)
<b>KBRC149</b>	Boin	38.0	41.0	3.0	0.36	520378	635496	120	114	-50	100
<b>KBRC150</b>	Boin	59.0	94.0	35.0	0.57	520335	635517	125	114	-65	148
including		65.0	91.0	26.0	0.70						
and		130.0	135.0	5.0	0.59						
and		141.0	148.0	7.0	0.42						
<b>KBRC150A</b>	Boin	72.0	74.0	2.0	0.59	520338	635514	122	114	-65	174
and		87.0	108.0	<b>21.0</b>	<b>1.19</b>						
and		136.0	139.0	3.0	1.01						
and		145.0	162.0	17.0	0.44						
<b>KBRC151</b>	Boin	9.0	20.0	<b>11.0</b>	<b>2.30</b>	519349	634402	131	120	-60	156
and		62.0	65.0	3.0	0.63						
and		136.0	144.0	8.0	0.55						
<b>KBRC152</b>	Boin	73.0	74.0	1.0	1.20	519292	634429	117	120	-60	258
and		209.0	213.0	4.0	1.56						
and		234.0	235.0	1.0	2.55						
<b>KBRC153</b>	Boin	7.0	11.0	4.0	0.68	519317	634201	122	120	-60	258
and		28.0	33.0	5.0	0.42						
and		42.0	60.0	<b>18.0</b>	<b>1.21</b>						
and		67.0	71.0	<b>4.0</b>	<b>1.40</b>						
and		110.0	114.0	4.0	0.82						
and		155.0	158.0	3.0	0.33						
and		191.0	194.0	3.0	0.39						
<b>KBRC154</b>	Boin	88.0	95.0	7.0	0.61	519086	633928	157	120	-60	178
and		149.0	152.0	3.0	0.27						
<b>KBRC155</b>	Boin	85.0	89.0	4.0	0.22	518896	633582	155	120	-60	138
and		103.0	105.0	2.0	0.89						
and		118.0	134.0	<b>16.0</b>	<b>0.57</b>						

## Newcore Gold Ltd. | Enchi Gold Project

2020 - 2021 Drill Results

Table accompanies news release dated September 21, 2021



Hole ID	Zone/Deposit	From (m)	To (m)	Length (m)	Au (g/t)	UTM East	UTM North	Elevation	Azimuth °	Dip °	Hole Length (m)
<b>KBRC155A</b>	Boin	95.0	97.0	2.0	0.68	518900	633578	163	120	-60	204
and		110.0	113.0	3.0	0.64						
and		127.0	135.0	8.0	0.37						
<b>KBRC156A</b>	Boin	156.0	174.0	<b>18.0</b>	<b>0.69</b>	518480	633164	130	114	-55	270
and		187.0	191.0	<b>4.0</b>	<b>1.20</b>						
<b>KBRC157B</b>	Boin	150.0	162.0	12.0	0.70	518457	633065	128	114	-65	180
<b>KBRC158</b>	Boin	77.0	91.0	<b>14.0</b>	<b>1.41</b>	518379	632992	126	114	-60	260
<b>KBRC159</b>	Boin	178.0	240.0	<b>62.0</b>	<b>0.73</b>	518423	633075	127	114	-65	240
including		187.0	206.0	<b>19.0</b>	<b>1.76</b>						
and incl.		199.0	206.0	<b>7.0</b>	<b>3.18</b>						
<b>KBRC160</b>	Boin		no significant results			518358	632778	124	114	-60	120
<b>KBRC161</b>	Boin	124.0	126.0	2.0	0.37	518330	632898	128	114	-55	200
and		144.0	151.0	7.0	0.36						
and		163.0	166.0	3.0	0.31						
<b>KBRC162</b>	Boin	65.0	69.0	4.0	0.53	518321	632793	120	114	-60	156
and		88.0	91.0	3.0	0.68						
and		101.0	107.0	<b>6.0</b>	<b>1.67</b>						
<b>KBRC163</b>	Boin	11.0	14.0	3.0	0.34	519678	634811	141	114	-60	102
and		27.0	54.0	<b>27.0</b>	<b>1.27</b>						
<b>KBRC164</b>	Boin	19.0	25.0	<b>6.0</b>	<b>1.23</b>	519649	634822	164	114	-60	144
and		102.0	114.0	<b>12.0</b>	<b>0.69</b>						
and		128.0	132.0	4.0	0.47						
<b>KBRC165</b>	Boin	78.0	80.0	2.0	0.41	519895	635045	120	114	-60	102
<b>KBRC166</b>	Boin		no significant results			519886	635049	126	114	-60	140
<b>KBRC167</b>	Boin		no significant results			519836	634974	123	114	-60	120
<b>KBRC168</b>	Boin	1.0	6.0	5.0	0.56	519816	634986	121	114	-60	140



## Newcore Gold Ltd. | Enchi Gold Project

2020 - 2021 Drill Results

Table accompanies news release dated September 21, 2021



Hole ID	Zone/Deposit	From (m)	To (m)	Length (m)	Au (g/t)	UTM East	UTM North	Elevation	Azimuth °	Dip °	Hole Length (m)
<b>KBRC169</b>	Boin	55.0	69.0	<b>14.0</b>	<b>1.41</b>	519973	635110	128	114	-60	138
including		62.0	68.0	<b>6.0</b>	<b>2.86</b>						
and		84.0	86.0	2.0	0.53						
and		90.0	92.0	2.0	0.53						
and		125.0	131.0	6.0	0.31						
<b>KBRC170</b>	Boin	45.0	49.0	4.0	0.31	520050	635185	141	114	-60	156
and		70.0	72.0	2.0	0.49						
<b>KBRC171</b>	Boin	77.0	78.0	1.0	1.07	520030	635195	129	114	-60	150
and		119.0	129.0	10.0	0.44						
<b>KBRC172</b>	Boin	2.0	5.0	3.0	0.27	520131	635252	125	114	-60	150
and		78.0	84.0	6.0	0.57						
and		128.0	138.0	<b>10.0</b>	<b>0.92</b>						
<b>KBRC173</b>	Boin	20.0	22.0	2.0	0.28	520105	635265	126	114	-60	186
and		85.0	87.0	2.0	0.76						
and		154.0	158.0	4.0	0.32						
and		166.0	179.0	13.0	0.30						
<b>KBRC174</b>	Boin	91.0	93.0	2.0	0.41	519957	635121	130	114	-60	162
and		153.0	154.0	1.0	0.76						
<b>KBRC175</b>	Boin	67.0	89.0	<b>22.0</b>	<b>0.65</b>	520291	635396	119	114	-60	150
<b>KBRC176</b>	Boin	70.0	77.0	7.0	0.39	520369	635575	130	114	-60	182
and		95.0	105.0	<b>10.0</b>	<b>0.64</b>						
and		130.0	140.0	10.0	0.44						
<b>KBRC177</b>	Boin	81.0	84.0	2.0	0.47	520320	635523	123	114	-65	228
and		108.0	109.0	1.0	0.46						
and		116.0	120.0	4.0	0.81						
and		204.0	206.0	2.0	1.39						
<b>KBRC178</b>	Boin	134.0	140.0	6.0	0.57	520297	635532	117	114	-65	220
		147.0	149.0	2.0	0.90						

## Newcore Gold Ltd. | Enchi Gold Project

2020 - 2021 Drill Results

Table accompanies news release dated September 21, 2021



Hole ID	Zone/Deposit	From (m)	To (m)	Length (m)	Au (g/t)	UTM East	UTM North	Elevation	Azimuth °	Dip °	Hole Length (m)
<b>KBRC179</b>	Boin	92.0	97.0	5.0	0.56	520436	635631	133	114	-50	150
<b>KBRC180</b>	Boin	108.0	110.0	2.0	0.33	520415	635637	134	114	-55	170
and		126.0	129.0	3.0	0.47						
<b>KBRC181</b>	Boin	127.0	138.0	<b>11.0</b>	<b>0.45</b>	520393	635648	138	114	-60	216
and		142.0	145.0	3.0	0.29						
and		155.0	162.0	<b>7.0</b>	<b>1.05</b>						
<b>KBRC182</b>	Boin	64.0	68.0	4.0	0.35	520570	635717	137	114	-60	108
and		78.0	82.0	4.0	0.68						
and		87.0	91.0	4.0	0.70						
<b>KBRC183</b>	Boin	93.0	96.0	3.0	0.49	520544	635724	131	114	-60	144
and		105.0	121.0	16.0	0.30						
<b>KBRC184</b>	Boin	86.0	88.0	2.0	0.44	520234	635422	114	114	-60	216
and		102.0	111.0	<b>9.0</b>	<b>0.82</b>						
and		125.0	128.0	3.0	0.45						
and		145.0	166.0	<b>21.0</b>	<b>0.94</b>						
<b>KBRC185</b>	Boin	114.0	116.0	2.0	1.42	530284	634768	135	114	-50	204
and		137.0	204.0	<b>67.0</b>	<b>0.85</b>						
including		137.0	146.0	<b>9.0</b>	<b>2.95</b>						
<b>KBRC186</b>	Boin	102.0	103.0	1.0	0.30	530262	634841	146	114	-60	200
and		138.0	142.0	4.0	0.54						
and		166.0	169.0	3.0	0.32						
<b>KBRC187</b>	Boin	0.0	1.0	1.0	0.56	530200	635099	137	114	-60	132
and		7.0	9.0	2.0	0.30						
and		22.0	24.0	2.0	1.19						
and		102.0	106.0	4.0	0.40						
<b>KBRC188</b>	Boin	6.0	30.0	<b>24.0</b>	<b>0.85</b>	530122	635241	129	114	-60	150
and		46.0	51.0	5.0	0.50						

## Newcore Gold Ltd. | Enchi Gold Project

2020 - 2021 Drill Results

Table accompanies news release dated September 21, 2021



Hole ID	Zone/Deposit	From (m)	To (m)	Length (m)	Au (g/t)	UTM East	UTM North	Elevation	Azimuth °	Dip °	Hole Length (m)
<b>KBRC189</b>	Boin	86.0	88.0	2.0	0.37	530142	635433	111	114	-60	200
and		92.0	94.0	2.0	0.51						
and		101.0	103.0	2.0	0.57						
and		121.0	123.0	2.0	0.41						
and		126.0	127.0	1.0	0.78						
and		140.0	142.0	2.0	0.37						
and		148.0	150.0	2.0	0.48						
<b>KBRC190</b>	Boin	103.0	111.0	8.0	0.61	530180	635591	128	114	-60	200
and		119.0	155.0	<b>36.0</b>	<b>1.14</b>						
including		124.0	142.0	<b>18.0</b>	<b>1.72</b>						
<b>KBRC191</b>	Boin	1.0	3.0	2.0	0.48	530297	635707	129	114	-60	100
<b>KBRC192</b>	Boin	116.0	118.0	2.0	0.36	530507	635817	145	114	-60	150
and		124.0	125.0	1.0	0.30						
<b>KBRC193</b>	Boin		no significant results			530909	635870	125	114	-50	100
<b>KBRC194</b>	Boin	4.0	6.0	2.0	0.31	530760	635882	119	114	-60	160
and		12.0	13.0	1.0	0.50						
and		17.0	19.0	2.0	0.46						
and		25.0	26.0	1.0	0.36						
and		102.0	103.0	1.0	0.86						
<b>KBRC195</b>	Boin	111.0	113.0	2.0	0.31	530910	635894	124	114	-70	208
and		145.0	146.0	1.0	0.37						
and		163.0	164.0	1.0	0.58						
<b>KBRC196</b>	Boin		no significant results			531135	635948	114	114	-50	100
<b>KBRC197</b>	Bon	21.0	23.0	2.0	0.54	531161	635960	108	114	-60	150
and		28.0	29.0	1.0	0.32						

## Newcore Gold Ltd. | Enchi Gold Project

2020 - 2021 Drill Results

Table accompanies news release dated September 21, 2021



Hole ID	Zone/Deposit	From (m)	To (m)	Length (m)	Au (g/t)	UTM East	UTM North	Elevation	Azimuth °	Dip °	Hole Length (m)
<b>KBRC198</b>	Boin	4.0	8.0	4.0	0.39	531190	635967	107	114	-70	204
and		29.0	32.0	3.0	0.43						
and		36.0	40.0	4.0	0.34						
and		97.0	99.0	2.0	0.39						
and		193.0	194.0	1.0	0.35						
<b>KBRC199</b>	Boin	41.0	46.0	5.0	0.41	531096	636032	112	114	-50	108
<b>KBRC200</b>	Boin	59.0	62.0	3.0	0.67	531120	636055	113	114	-70	200
<b>KBRC201</b>	Boin	84.0	86.0	2.0	0.26	520881	636042	111	114	-60	180
<b>KBRC202</b>	Boin	7.0	8.0	1.0	0.32	518142	632540	136	114	-60	102
<b>KBRC203</b>	Boin	59.0	61.0	2.0	0.29	518113	632554	129	114	-60	150
and		130.0	133.0	3.0	0.32						
<b>KBRC204</b>	Boin	51.0	53.0	2.0	0.26	518036	632382	121	114	-60	102
<b>KBRC205</b>	Boin	12.0	27.0	<b>15.0</b>	<b>0.53</b>	517993	632397	131	114	-60	132
including		13.0	16.0	<b>3.0</b>	<b>1.81</b>						
and		30.0	33.0	3.0	0.31						
and		80.0	82.0	2.0	0.48						
<b>KBRC206</b>	Boin	67.0	69.0	<b>2.0</b>	<b>2.31</b>	517951	632416	125	114	-60	168
<b>KBRC207</b>	Boin	12.0	14.0	2.0	0.32	517815	632238	120	114	-60	108
and		44.0	46.0	2.0	0.40						
<b>KBRC208</b>	Boin	51.0	53.0	2.0	0.30	517778	632254	115	114	-60	105
and		78.0	80.0	2.0	0.21						
and		88.0	89.0	1.0	0.33						
<b>KBRC209</b>	Boin	87.0	90.0	3.0	0.19	517741	632271	115	114	-60	156
<b>KBRC210A</b>	Boin		no significant results			522086	637066	98	114	-60	109
<b>KBRC211</b>	Boin		no significant results			522026	637096	101	114	-60	150
<b>KBRC212</b>	Boin		no significant results			521954	637125	99	114	-60	200
<b>KBRC213</b>	Boin		no significant results			521852	636897	105	114	-60	108
<b>KBRC214</b>	Boin		no significant results			521774	636929	100	114	-60	156

## Newcore Gold Ltd. | Enchi Gold Project

2020 - 2021 Drill Results

Table accompanies news release dated September 21, 2021



Hole ID	Zone/Deposit	From (m)	To (m)	Length (m)	Au (g/t)	UTM East	UTM North	Elevation	Azimuth °	Dip °	Hole Length (m)
<b>KBRC215</b>	Boin	89.0	90.0	1.0	0.21	521707	636961	104	114	-60	213
<b>KBRC216</b>	Boin		no significant results			521425	636580	116	114	-60	108
<b>KBRC217</b>	Boin		no significant results			521370	636604	108	114	-60	150
<b>KBRC218</b>	Boin		no significant results			521309	636633	100	114	-60	200
<b>KBRC219</b>	Boin		no significant results			521141	636272	107	114	-60	100
<b>KBRC220</b>	Boin	114.0	116.0	2.0	0.28	521096	636295	107	114	-60	150
<b>KBRC221</b>	Boin		no significant results			521053	636315	107	114	-60	216
<b>KBRC222</b>	Boin	23.0	26.0	3.0	0.40	517464	631646	136	114	-60	120
and		34.0	41.0	7.0	0.45						
and		48.0	53.0	5.0	0.33						
and		59.0	61.0	2.0	0.67						
<b>KBRC223</b>	Boin	75.0	79.0	4.0	0.29	517535	631739	140	114	-60	132
<b>KBRC224</b>	Boin	3.0	4.0	1.0	0.94	517608	631888	113	114	-60	100
and		41.0	42.0	1.0	1.16						
<b>KBRC225</b>	Boin	23.0	25.0	<b>2.0</b>	<b>1.51</b>	517571	631888	118	114	-60	100
and		38.0	40.0	2.0	0.31						
and		70.0	109.0	<b>39.0</b>	<b>0.67</b>						
including		95.0	103.0	<b>8.0</b>	<b>1.60</b>						
<b>KBRC226</b>	Boin	91.0	92.0	1.0	0.63	517690	632085	122	114	-60	100
<b>KBRC227</b>	Boin	84.0	86.0	2.0	0.37	517653	632106	116	114	-60	150
and		95.0	104.0	9.0	0.35						
including		95.0	97.0	2.0	0.69						
<b>KBRC228</b>	Boin	36.0	38.0	2.0	0.33	518290	632705	125	114	-60	100
and		50.0	51.0	1.0	0.40						
and		78.0	84.0	6.0	0.29						
<b>KBRC229</b>	Boin	118.0	133.0	<b>15.0</b>	<b>0.73</b>	518240	632729	127	114	-60	150
<b>KBRC230</b>	Boin		no significant results			518218	632621	126	114	-60	107

## Newcore Gold Ltd. | Enchi Gold Project

2020 - 2021 Drill Results

Table accompanies news release dated September 21, 2021



Hole ID	Zone/Deposit	From (m)	To (m)	Length (m)	Au (g/t)	UTM East	UTM North	Elevation	Azimuth °	Dip °	Hole Length (m)
<b>KBRC231</b>	Boin	52.0	54.0	2.0	0.33	518175	632636	120	114	-60	150
and		56.0	57.0	1.0	0.32						
and		103.0	104.0	1.0	0.33						
<b>KBRC232</b>	Boin	8.0	12.0	4.0	0.36	520142	635142	138	114	-60	84
<b>KBRC233</b>	Boin	21.0	27.0	6.0	0.29	520119	635156	135	114	-60	126
and		39.0	43.0	<b>4.0</b>	<b>3.50</b>						
and		63.0	64.0	1.0	0.45						
and		67.0	68.0	1.0	0.31						
<b>KBRC234</b>	Boin	64.0	71.0	<b>7.0</b>	<b>1.25</b>	520035	635082	121	114	-60	114
<b>KBRC235</b>	Boin	40.0	43.0	<b>3.0</b>	<b>1.45</b>	520092	635164	134	114	-60	136
and		55.0	59.0	<b>4.0</b>	<b>1.29</b>						
and		91.0	92.0	1.0	0.46						
and		103.0	107.0	4.0	0.39						
and		123.0	125.0	2.0	0.34						
<b>KBRC236</b>	Boin	13.0	18.0	<b>5.0</b>	<b>1.24</b>	520187	635223	125	114	-60	126
and		55.0	124.0	<b>69.0</b>	<b>0.90</b>						
including		61.0	73.0	<b>12.0</b>	<b>2.06</b>						
<b>KBRC237</b>	Boin	24.0	26.0	2.0	0.59	520246	635295	118	114	-60	100
and		52.0	56.0	4.0	0.46						
<b>KBRC238</b>	Boin	44.0	45.0	1.0	0.46	520218	635313	112	114	-60	150
and		118.0	120.0	2.0	0.41						
<b>KBRC239</b>	Boin	6.0	7.0	1.0	0.37	520333	635374	114	114	-60	100
and		91.0	92.0	1.0	0.71						
<b>KBRC240</b>	Boin	48.0	51.0	3.0	0.69	520334	635433	110	114	-60	100
and		57.0	59.0	2.0	0.28						
and		72.0	73.0	1.0	0.63						

## Newcore Gold Ltd. | Enchi Gold Project

2020 - 2021 Drill Results

Table accompanies news release dated September 21, 2021



Hole ID	Zone/Deposit	From (m)	To (m)	Length (m)	Au (g/t)	UTM East	UTM North	Elevation	Azimuth °	Dip °	Hole Length (m)
<b>KBRC241</b>	Boin	18.0	26.0	<b>8.0</b>	<b>0.45</b>	520300	635447	129	114	-60	150
and		34.0	43.0	<b>9.0</b>	<b>1.75</b>						
and		62.0	65.0	<b>3.0</b>	<b>1.36</b>						
and		76.0	112.0	<b>36.0</b>	<b>1.02</b>						
including		95.0	102.0	<b>7.0</b>	<b>2.58</b>						
<b>KBRC242</b>	Boin	6.0	8.0	2.0	0.57	520443	635548	121	114	-60	100
<b>KBRC243</b>	Boin		no significant results			520612	635700	129	114	-60	100
<b>KBRC244</b>	Boin	0.0	1.0	1.0	0.48	518380	632770	126	114	-60	102
and		4.0	11.0	<b>7.0</b>	<b>0.68</b>						
<b>KBRC245</b>	Boin	126.0	132.0	6.0	0.56	520161	635179	94	114	-55	132
<b>KBRC246</b>	Boin	2.0	12.0	10.0	0.74	520216	635206	116	114	-50	108
<b>KBRC247</b>	Boin	9.0	16.0	7.0	0.45	520187	635223	123	114	-65	186
and		70.0	74.0	4.0	0.50						
and		102.0	105.0	3.0	0.56						
<b>KBRC248</b>	Boin	1.0	6.0	5.0	0.45	520285	635280	115	114	-55	156
and		29.0	31.0	2.0	0.25						
<b>KBRC249</b>	Boin	1.0	3.0	2.0	0.32	520309	635327	113	114	-55	132
and		14.0	15.0	1.0	0.31						
<b>KBRC250</b>	Boin	54.0	59.0	5.0	0.28	520273	635345	119	114	-55	138
and		79.0	81.0	2.0	0.30						
and		109.0	111.0	<b>2.0</b>	<b>95.16</b>						
and		111.0	116.0	<b>5.0</b>	<b>0.93</b>						
and		120.0	121.0	<b>1.0</b>	<b>13.22</b>						
and		121.0	127.0	6.0	0.21						
<b>KBRC251</b>	Boin	182.0	187.0	5.0	0.20	520302	635603	130	114	-60	240
<b>KBRC252</b>	Boin	134.0	135.0	1.0	1.86	520512	635737	144	114	-60	207
<b>KBRC253</b>	Boin	17.0	19.0	2.0	0.33	519153	633798	114	114	-60	114
and		24.0	31.0	7.0	0.99						

## Newcore Gold Ltd. | Enchi Gold Project

2020 - 2021 Drill Results

Table accompanies news release dated September 21, 2021



Hole ID	Zone/Deposit	From (m)	To (m)	Length (m)	Au (g/t)	UTM East	UTM North	Elevation	Azimuth °	Dip °	Hole Length (m)
<b>KBRC254</b>	Boin	57.0	59.0	2.0	0.30	517736	632173	112	114	-50	102
<b>KBRC255</b>	Boin	143.0	145.0	2.0	0.39	517700	632187	113	114	-50	152
<b>KBRC256</b>	Boin	39.0	47.0	8.0	0.68	517597	631947	124	114	-55	150
and		51.0	53.0	2.0	0.27						
and		63.0	76.0	13.0	0.48						
and		118.0	119.0	1.0	0.36						
and		126.0	139.0	13.0	0.21						
<b>KBRC257</b>	Boin	42.0	44.0	2.0	0.43	517565	631962	114	114	-55	201
and		52.0	81.0	<b>29.0</b>	<b>0.50</b>						
and		188.0	201.0	13.0	0.45						
<b>KBRC258</b>	Boin	49.0	52.0	3.0	0.86	517585	632005	112	114	-50	150
and		62.0	65.0	3.0	0.50						
and		85.0	91.0	6.0	0.78						
and		107.0	114.0	7.0	0.27						
and		139.0	143.0	4.0	0.39						
<b>KBRC259</b>	Boin	56.0	62.0	6.0	0.46	517742	632065	113	114	-50	124
<b>KBRC260</b>	Boin	39.0	41.0	2.0	0.35	517663	631979	110	114	-55	90
and		49.0	62.0	<b>13.0</b>	<b>0.78</b>						
<b>KBRC261</b>	Boin	101.0	103.0	2.0	0.31	517742	632065	113	114	-50	156
<b>KBRC262</b>	Boin		no significant results			517617	632116	104	114	-50	198
<b>KBRC263</b>	Boin	22.0	25.0	3.0	0.31	517653	631932	113	114	-55	108
and		45.0	46.0	1.0	0.51						



## Newcore Gold Ltd. | Enchi Gold Project

2020 - 2021 Drill Results

Table accompanies news release dated September 21, 2021



Hole ID	Zone/Deposit	From (m)	To (m)	Length (m)	Au (g/t)	UTM East	UTM North	Elevation	Azimuth °	Dip °	Hole Length (m)
<b>KBRC264</b>	Boin	33.0	42.0	<b>9.0</b>	<b>0.50</b>	517530	631895	119	114	-50	236
and		63.0	64.0	1.0	0.53						
and		72.0	102.0	<b>30.0</b>	<b>0.39</b>						
and		142.0	144.0	2.0	0.32						
and		160.0	169.0	9.0	0.32						
and		177.0	230.0	<b>53.0</b>	<b>0.51</b>						
including		187.0	196.0	<b>9.0</b>	<b>1.17</b>						
and		234.0	236.0	2.0	0.43						
<b>KBRC265</b>	Boin	3.0	5.0	2.0	0.32	517569	631819	132	114	-50	108
and		23.0	24.0	1.0	0.88						
and		44.0	48.0	4.0	0.36						
and		69.0	78.0	<b>9.0</b>	<b>1.55</b>						
including		70.0	72.0	<b>2.0</b>	<b>4.75</b>						
<b>KBRC266</b>	Boin	14.0	22.0	<b>8.0</b>	<b>1.12</b>	517530	631833	131	114	-50	156
and		92.0	94.0	2.0	0.56						
<b>KBRC267</b>	Boin	45.0	49.0	4.0	0.30	517490	631848	125	114	-55	186
and		95.0	102.0	<b>7.0</b>	<b>1.78</b>						
<b>KBRC268</b>	Boin	45.0	46.0	1.0	0.84	517365	631470	110	114	-50	126
and		60.0	85.0	<b>25.0</b>	<b>0.79</b>						
and		94.0	96.0	2.0	0.29						
and		108.0	121.0	<b>13.0</b>	<b>0.54</b>						
<b>KBRC269</b>	Boin	128.0	130.0	2.0	0.50	517338	631490	109	114	-50	152
<b>KBRC270</b>	Boin	48.0	53.0	5.0	0.50	517413	631559	108	114	-50	120
and		78.0	80.0	2.0	0.41						
and		92.0	112.0	20.0	0.44						
<b>KBDD061A</b>	Boin	236.0	236.7	0.7	1.38	518372	633108	122	114	-65	360.9
<b>KBDD062</b>	Boin	303.0	304.1	1.1	0.24	518423	633182	127	114	-62	320.8

## Newcore Gold Ltd. | Enchi Gold Project

2020 - 2021 Drill Results

Table accompanies news release dated September 21, 2021



Hole ID	Zone/Deposit	From (m)	To (m)	Length (m)	Au (g/t)	UTM East	UTM North	Elevation	Azimuth °	Dip °	Hole Length (m)
<b>KBDD063A</b>	Boin	207.5	210.0	2.5	0.30	518891	633759	155	114	-60	249.8
and		218.5	225.8	7.3	0.45						
and		243.0	244.2	1.2	1.09						
and		248.0	249.8	1.8	0.63						
<b>KBRD063</b>	Boin	198.4	201.3	2.9	0.69	518891	633759	155	114	-60	315.4
and		208.9	221.9	13.0	0.13						
and		252.3	254.4	2.1	2.72						
and		297.8	301.0	3.2	0.72						
<b>KBDD064</b>	Boin	107.3	109.0	1.7	1.19	519239	634235	130	114	-60	351.7
and		121.0	195.0	<b>74.0</b>	<b>1.28</b>						
including		122.0	128.4	<b>6.4</b>	<b>2.65</b>						
including		136.0	137.4	<b>1.4</b>	<b>9.93</b>						
including		149.3	155.4	<b>6.1</b>	<b>2.24</b>						
including		170.6	177.0	<b>6.4</b>	<b>4.04</b>						
including	189.0	193.0	<b>4.0</b>	<b>2.41</b>							
<b>KBDD065</b>	Boin	276.3	277.0	0.7	1.32	520215	635573	109	114	-57	330.3
and		296.0	297.8	<b>1.8</b>	<b>6.14</b>						
and		310.0	313.0	3.0	0.56						
<b>KBDD066</b>	Boin	222.0	247.0	<b>25.0</b>	<b>1.08</b>	518777	633586	146	114	-57	300.6
including		222.0	224.0	<b>2.0</b>	<b>4.31</b>						
including		232.9	237.5	<b>4.6</b>	<b>2.06</b>						
and		257.4	279.0	<b>21.6</b>	<b>0.63</b>						
including		259.0	260.8	<b>1.8</b>	<b>2.04</b>						
including	267.0	270.0	<b>3.0</b>	<b>1.84</b>							
<b>KBDD067</b>	Boin		no significant results			519130	634081	142	114	-57	300.4
<b>KBRC271</b>	Boin	10.0	12.0	2.0	0.34	517381	631566	110	114	-50	162
and		18.0	25.0	<b>7.0</b>	<b>1.22</b>						
and		77.0	110.0	<b>33.0</b>	<b>0.47</b>						
and		119.0	122.0	3.0	0.30						

## Newcore Gold Ltd. | Enchi Gold Project

2020 - 2021 Drill Results

Table accompanies news release dated September 21, 2021



Hole ID	Zone/Deposit	From (m)	To (m)	Length (m)	Au (g/t)	UTM East	UTM North	Elevation	Azimuth °	Dip °	Hole Length (m)
<b>KBRC272</b>	Boin	90.0	94.0	4.0	0.40	517432	631655	126	114	-50	162
and		102.0	109.0	7.0	0.75						
<b>KBRC273</b>	Boin	152.0	155.0	3.0	1.63	519489	634780	132	114	-50	278
and		166.0	175.0	<b>9.0</b>	<b>1.67</b>						
and		183.0	192.0	<b>9.0</b>	<b>1.57</b>						
and		232.0	233.0	1.0	0.70						
<b>KBRC274</b>	Boin	12.0	13.0	1.0	0.41	520124	635198	127	114	-55	200
and		32.0	40.0	8.0	0.41						
and		60.0	63.0	3.0	0.82						
and		84.0	85.0	1.0	0.39						
<b>KBRC275</b>	Boin	16.0	19.0	3.0	0.39	520245	635365	116	114	-55	156
and		45.0	46.0	1.0	0.31						
and		80.0	82.0	2.0	0.32						
<b>KBRC276</b>	Boin	27.0	67.0	<b>40.0</b>	<b>0.63</b>	520217	635377	120	114	-55	216
including		44.0	46.0	2.0	3.42						
and		69.0	70.0	1.0	0.65						
and		80.0	83.0	3.0	0.35						
and		91.0	103.0	<b>12.0</b>	<b>0.64</b>						
including		91.0	95.0	4.0	1.12						
and		113.0	216.0	<b>103.0</b>	<b>1.00</b>						
including		121.0	126.0	<b>5.0</b>	<b>4.16</b>						
including		132.0	133.0	<b>1.0</b>	<b>2.91</b>						
including		198.0	214.0	<b>16.0</b>	<b>1.67</b>						
<b>KBRC277</b>	Boin	159.0	162.0	3.0	1.00	518205	632743	131	114	-60	216
<b>KBRC278</b>	Boin	117.0	132.0	<b>15.0</b>	<b>1.49</b>	518259	632764	129	114	-55	156
including		123.0	129.0	<b>6.0</b>	<b>2.44</b>						
<b>KBRC279</b>	Boin	152.0	160.0	8.0	0.68	518229	632779	127	114	-55	205
and		171.0	174.0	3.0	0.45						
<b>KBRC280</b>	Boin	140.0	141.0	1.0	0.29	518288	632806	122	114	-60	222

## Newcore Gold Ltd. | Enchi Gold Project

2020 - 2021 Drill Results

Table accompanies news release dated September 21, 2021



Hole ID	Zone/Deposit	From (m)	To (m)	Length (m)	Au (g/t)	UTM East	UTM North	Elevation	Azimuth °	Dip °	Hole Length (m)
<b>SWRC068</b>	Sewum	3.0	5.0	2.0	0.28	521494	629230	193	120	-70	100
and		23.0	31.0	8.0	0.30						
and		39.0	42.0	3.0	0.35						
and		46.0	62.0	<b>16.0</b>	<b>0.54</b>						
including		51.0	57.0	6.0	0.93						
and		74.0	76.0	2.0	1.03						
<b>SWRC069</b>	Sewum	39.0	41.0	2.0	0.30	521442	629252	198	120	-70	125
and		50.0	59.0	9.0	0.55						
and		63.0	70.0	7.0	0.47						
and		98.0	114.0	<b>16.0</b>	<b>1.20</b>						
<b>SWRC070</b>	Sewum	43.0	45.0	2.0	1.41	521392	629273	193	120	-70	180
and		141.0	148.0	7.0	0.98						
<b>SWRC071</b>	Sewum	3.0	16.0	13.0	0.45	521347	628986	193	120	-55	100
and		38.0	43.0	5.0	0.46						
and		95.0	100.0	5.0	0.55						
<b>SWRC072</b>	Sewum	3.0	22.0	<b>19.0</b>	<b>0.67</b>	521408	628860	199	120	-60	150
and		46.0	84.0	<b>38.0</b>	<b>0.42</b>						
<b>SWRC073</b>	Sewum	0.0	28.0	<b>28.0</b>	<b>1.52</b>	520472	626241	119	130	-50	100
including		15.0	25.0	<b>10.0</b>	<b>3.58</b>						
and		36.0	42.0	6.0	1.21						
<b>SWRC074</b>	Sewum	7.0	38.0	<b>31.0</b>	<b>0.84</b>	520416	626193	105	130	-50	100
including		8.0	17.0	<b>9.0</b>	<b>1.47</b>						
and		48.0	60.0	12.0	0.71						
and		92.0	94.0	2.0	0.36						
<b>SWRC075</b>	Sewum	169.0	177.0	8.0	0.56	520355	626219	102	130	-60	220
<b>SWRC076</b>	Sewum	1.0	12.0	11.0	0.48	521308	627853	118	120	-50	120
and		39.0	88.0	<b>49.0</b>	<b>0.91</b>						
and		104.0	120.0	<b>16.0</b>	<b>3.04</b>						

## Newcore Gold Ltd. | Enchi Gold Project

2020 - 2021 Drill Results

Table accompanies news release dated September 21, 2021



Hole ID	Zone/Deposit	From (m)	To (m)	Length (m)	Au (g/t)	UTM East	UTM North	Elevation	Azimuth °	Dip °	Hole Length (m)
<b>SWRC077</b>	Sewum	29.0	35.0	6.0	0.49	521268	627871	112	120	-50	180
and		54.0	56.0	2.0	0.36						
and		68.0	83.0	<b>15.0</b>	<b>0.76</b>						
and		89.0	92.0	3.0	0.62						
and		117.0	119.0	2.0	0.40						
and		126.0	131.0	5.0	0.40						
and		138.0	140.0	2.0	0.28						
and		151.0	153.0	2.0	0.35						
and		163.0	165.0	2.0	0.40						
<b>SWRC078</b>	Sewum		no significant results			520197	626036	83	120	-60	270
<b>SWRC079</b>	Sewum	207.0	209.0	2.0	0.37	520334	626242	104	120	-60	294
and		260.0	262.0	2.0	1.78						
and		278.0	284.0	6.0	0.98						
<b>SWRC080</b>	Sewum	149.0	159.0	<b>10.0</b>	<b>1.35</b>	520405	626279	113	120	-60	204
and		166.0	168.0	2.0	0.49						
<b>SWRC081</b>	Sewum		no significant results			520380	626293	104	120	-60	250
<b>SWRC082</b>	Sewum	36.0	60.0	<b>24.0</b>	<b>2.02</b>	520483	626291	115	120	-50	246
and		96.0	111.0	15.0	0.40						
and		222.0	224.0	2.0	0.55						
<b>SWRC083</b>	Sewum	86.0	108.0	<b>22.0</b>	<b>1.97</b>	520459	626301	124	120	-60	252
and		140.0	141.0	1.0	0.83						
<b>SWRC084</b>	Sewum	115.0	134.0	<b>19.0</b>	<b>1.41</b>	520472	626357	114	120	-60	250
<b>SWRC085</b>	Sewum	4.0	12.0	8.0	0.43	521395	628651	191	120	-50	100
and		42.0	44.0	2.0	0.36						
and		63.0	64.0	1.0	0.31						
<b>SWRC086</b>	Sewum	131.0	133.0	2.0	0.46	521353	628672	198	120	-50	150
<b>SWRC087</b>	Sewum	0.0	1.0	1.0	0.66	521415	628352	145	120	-50	120
and		84.0	86.0	2.0	0.48						

## Newcore Gold Ltd. | Enchi Gold Project

2020 - 2021 Drill Results

Table accompanies news release dated September 21, 2021



Hole ID	Zone/Deposit	From (m)	To (m)	Length (m)	Au (g/t)	UTM East	UTM North	Elevation	Azimuth °	Dip °	Hole Length (m)
<b>SWRC088</b>	Sewum	7.0	18.0	11.0	0.32	521366	628375	145	120	-50	180
and		34.0	36.0	2.0	0.29						
and		56.0	63.0	7.0	0.35						
<b>SWRC089</b>	Sewum	12.0	13.0	1.0	0.33	521412	628244	127	120	-50	102
and		43.0	45.0	2.0	0.31						
and		47.0	49.0	2.0	0.30						
and		60.0	62.0	2.0	0.38						
<b>SWRC090</b>	Sewum	0.0	1.0	1.0	0.52	521370	628269	137	120	-50	156
and		66.0	68.0	2.0	0.29						
and		114.0	116.0	2.0	0.46						
and		119.0	121.0	2.0	0.73						
<b>SWRC091</b>	Sewum	4.0	5.0	1.0	0.32	521371	628158	107	120	-50	100
and		60.0	61.0	1.0	0.30						
and		81.0	82.0	1.0	0.40						
and		95.0	99.0	4.0	0.81						
<b>SWRC092</b>	Sewum	90.0	91.0	1.0	0.71	521270	627986	106	120	-50	220
and		140.0	148.0	8.0	0.37						
and		196.0	198.0	2.0	0.43						
<b>SWRC093</b>	Sewum	8.0	11.0	3.0	1.48	521364	627948	102	120	-50	168
and		32.0	49.0	<b>17.0</b>	<b>0.60</b>						
and		61.0	164.0	<b>103.0</b>	<b>0.82</b>						

## Newcore Gold Ltd. | Enchi Gold Project

2020 - 2021 Drill Results

Table accompanies news release dated September 21, 2021



Hole ID	Zone/Deposit	From (m)	To (m)	Length (m)	Au (g/t)	UTM East	UTM North	Elevation	Azimuth °	Dip °	Hole Length (m)
<b>SWRC094</b>	Sewum	86.0	88.0	2.0	0.33	521225	627895	113	120	-50	254
and		91.0	94.0	3.0	0.32						
and		108.0	111.0	3.0	1.19						
and		115.0	131.0	<b>16.0</b>	<b>1.26</b>						
and		147.0	150.0	3.0	0.55						
and		158.0	164.0	6.0	1.51						
and		175.0	183.0	<b>8.0</b>	<b>2.35</b>						
and		187.0	195.0	8.0	0.71						
and		246.0	252.0	6.0	0.37						
<b>SWRC095</b>	Sewum	27.0	28.0	1.0	0.95	521155	627863	119	120	-50	242
and		122.0	124.0	2.0	1.63						
and		181.0	195.0	14.0	0.53						
and		233.0	238.0	5.0	1.16						
<b>SWRC096</b>	Sewum	0.0	1.0	1.0	2.44	521165	627779	105	120	-50	200
and		66.0	67.0	1.0	1.56						
and		83.0	84.0	1.0	0.54						
and		92.0	108.0	<b>16.0</b>	<b>0.69</b>						
and		136.0	138.0	2.0	0.40						
and		143.0	192.0	49.0	0.32						
<b>SWRC097</b>	Sewum	2.0	3.0	1.0	0.31	521164	627439	106	120	-50	180
and		22.0	23.0	1.0	0.36						
and		155.0	156.0	1.0	0.62						
<b>SWRC098</b>	Sewum	7.0	12.0	5.0	0.29	521375	628065	100	120	-50	150
and		59.0	60.0	1.0	0.66						
<b>SWRC099</b>	Sewum	9.0	10.0	1.0	0.42	521332	628166	110	120	-50	150
		94.0	96.0	2.0	0.21						
		118.0	130.0	<b>12.0</b>	<b>0.73</b>						
		136.0	138.0	2.0	0.29						

## Newcore Gold Ltd. | Enchi Gold Project

### 2020 - 2021 Drill Results

Table accompanies news release dated September 21, 2021



Hole ID	Zone/Deposit	From (m)	To (m)	Length (m)	Au (g/t)	UTM East	UTM North	Elevation	Azimuth °	Dip °	Hole Length (m)
<b>SWRC100</b>	Sewum	116.0	122.0	6.0	0.60	520433	626319	116	120	-60	252
and		144.0	158.0	<b>14.0</b>	<b>0.74</b>						
and		189.0	190.0	1.0	1.06						
and		195.0	196.0	1.0	0.41						
<b>SWRC101</b>	Sewum	154.0	171.0	17.0	0.62	520451	626371	112	120	-60	220
<b>SWRC102</b>	Sewum	35.0	36.0	1.0	0.32	520332	626142	93	120	-60	200
<b>SWRC103</b>	Sewum	19.0	20.0	1.0	0.34	520348	626128	98	120	-50	174
and		63.0	72.0	9.0	0.77						
and		78.0	79.0	1.0	0.30						
and		83.0	87.0	4.0	0.47						
<b>SWRC104</b>	Sewum	26.0	27.0	1.0	0.95	520571	626500	93	120	-60	264
and		126.0	127.0	1.0	0.43						
and		146.0	150.0	4.0	0.92						
and		215.0	216.0	1.0	0.70						
<b>SWRC105</b>	Sewum	7.0	9.0	2.0	0.28	521415	628026	106	120	-50	274
and		84.0	85.0	1.0	0.65						
and		99.0	101.0	2.0	0.33						
<b>SWRC106</b>	Sewum		no significant results			521448	627900	104	120	-50	234
<b>SWRC107</b>	Sewum	4.0	81.0	<b>77.0</b>	<b>0.63</b>	521408	627918	102	120	-50	186
including		4.0	40.0	<b>36.0</b>	<b>0.72</b>						
and incl.		28.0	37.0	<b>9.0</b>	<b>1.82</b>						
including		48.0	80.0	<b>32.0</b>	<b>0.70</b>						
and incl.		53.0	67.0	<b>14.0</b>	<b>1.22</b>						
and		139.0	186.0	<b>47.0</b>	<b>0.39</b>						
<b>SWRC108</b>	Sewum	78.0	79.0	1.0	0.31	521444	628077	114	120	-50	300
and		139.0	143.0	4.0	0.42						
<b>SWRC109</b>	Sewum	116.0	117.0	1.0	0.24	521438	627962	104	120	-50	262
and		154.0	155.0	1.0	0.23						
<b>SWRC110</b>	Sewum		no significant results			521480	627942	105	120	-50	222



## Newcore Gold Ltd. | Enchi Gold Project

2020 - 2021 Drill Results

Table accompanies news release dated September 21, 2021



Hole ID	Zone/Deposit	From (m)	To (m)	Length (m)	Au (g/t)	UTM East	UTM North	Elevation	Azimuth °	Dip °	Hole Length (m)
<b>SWRC111</b>	Sewum	5.0	11.0	6.0	0.25	521341	627895	108	120	-50	300
and		63.0	76.0	13.0	0.22						
and		90.0	92.0	2.0	0.49						
and		108.0	109.0	1.0	0.42						
and		112.0	113.0	1.0	0.37						
and		115.0	124.0	9.0	0.66						
and		175.0	176.0	1.0	0.36						
and		180.0	181.0	1.0	0.40						
and		214.0	215.0	1.0	0.31						
and		248.0	254.0	6.0	0.28						
and		262.0	263.0	1.0	0.38						
and		287.0	298.0	11.0	0.23						
<b>SWRC112</b>	Sewum	32.0	33.0	1.0	0.38						
and		51.0	57.0	6.0	0.44						
and		116.0	117.0	1.0	0.46						
and		149.0	150.0	1.0	0.45						
and		185.0	186.0	1.0	0.30						
and		213.0	216.0	3.0	0.29						
<b>SWRC113</b>	Sewum	46.0	48.0	2.0	0.61	521387	627988	98	120	-50	283
and		61.0	65.0	4.0	0.33						
and		84.0	86.0	2.0	0.32						
and		164.0	166.0	2.0	0.29						
and		207.0	208.0	1.0	0.50						
and		220.0	283.0	63.0	0.24						
including		231.0	233.0	2.0	0.49						
including		255.0	257.0	2.0	0.42						
including		271.0	283.0	12.0	0.39						

## Newcore Gold Ltd. | Enchi Gold Project

2020 - 2021 Drill Results

Table accompanies news release dated September 21, 2021



Hole ID	Zone/Deposit	From (m)	To (m)	Length (m)	Au (g/t)	UTM East	UTM North	Elevation	Azimuth °	Dip °	Hole Length (m)
<b>NBRC016</b>	Nyam	23.0	29.0	6.0	1.03	530221	637264	81	300	-60	130
and		50.0	54.0	4.0	0.40						
and		68.0	86.0	18.0	0.63						
and		97.0	100.0	3.0	0.48						
and		109.0	112.0	3.0	0.55						
<b>NBRC017</b>	Nyam	8.0	53.0	<b>45.0</b>	<b>1.38</b>	530241	637278	69	300	-60	150
including		8.0	30.0	<b>22.0</b>	<b>0.74</b>						
and incl.		47.0	53.0	<b>6.0</b>	<b>6.25</b>						
and		64.0	66.0	2.0	1.88						
and		83.0	93.0	10.0	0.41						
and		102.0	107.0	5.0	0.54						
and		135.0	137.0	2.0	0.34						
<b>NBRC018</b>	Nyam	10.0	12.0	2.0	0.25	530180	637314	76	300	-60	84
and		36.0	42.0	6.0	0.32						
<b>NBRC019</b>	Nyam	80.0	82.0	2.0	0.35	530845	638277	81	300	-60	156
and		91.0	108.0	<b>17.0</b>	<b>1.20</b>						
<b>NBRC020</b>	Nyam	51.0	60.0	<b>9.0</b>	<b>1.14</b>	530506	637714	86	300	-60	150
and		73.0	102.0	<b>29.0</b>	<b>0.94</b>						
and		110.0	120.0	<b>10.0</b>	<b>1.18</b>						
and		139.0	143.0	4.0	0.41						
<b>NBRC021</b>	Nyam	15.0	17.0	2.0	0.33	530474	637679	93	300	-60	130
and		32.0	34.0	2.0	0.73						
and		50.0	54.0	4.0	1.56						
and		63.0	84.0	<b>21.0</b>	<b>1.42</b>						
and		90.0	96.0	<b>6.0</b>	<b>1.26</b>						
and		102.0	105.0	3.0	0.36						
and		109.0	119.0	10.0	0.52						
and		126.0	129.0	3.0	0.65						

## Newcore Gold Ltd. | Enchi Gold Project

2020 - 2021 Drill Results

Table accompanies news release dated September 21, 2021



Hole ID	Zone/Deposit	From (m)	To (m)	Length (m)	Au (g/t)	UTM East	UTM North	Elevation	Azimuth °	Dip °	Hole Length (m)
<b>NBRC022</b>	Nyam	8.0	10.0	2.0	1.96	530435	637610	102	300	-60	150
and		70.0	90.0	<b>20.0</b>	<b>1.72</b>						
and		116.0	119.0	3.0	0.36						
<b>NBRC023</b>	Nyam	49.0	51.0	2.0	0.19	530712	638187	98	300	-60	80
<b>NBRC024</b>	Nyam	22.0	26.0	4.0	0.67	530262	637265	78	300	-60	156
and		41.0	42.0	1.0	0.89						
and		57.0	84.0	<b>27.0</b>	<b>1.34</b>						
and		93.0	102.0	<b>9.0</b>	<b>3.45</b>						
and		113.0	120.0	7.0	0.47						
and		137.0	146.0	9.0	0.38						
<b>NBRC025</b>	Nyam	33.0	35.0	2.0	0.51	530284	637253	78	300	-60	174
and		72.0	73.0	1.0	0.41						
and		92.0	124.0	<b>32.0</b>	<b>0.84</b>						
and		136.0	139.0	3.0	0.51						
and		151.0	162.0	11.0	0.55						
<b>NBRC026</b>	Nyam	64.0	66.0	2.0	0.36	530262	637240	75	300	-60	204
and		79.0	91.0	12.0	0.42						
and		96.0	98.0	2.0	0.86						
and		105.0	109.0	<b>4.0</b>	<b>2.39</b>						
and		116.0	117.0	1.0	0.65						
and		125.0	127.0	2.0	1.00						
and		145.0	148.0	3.0	0.57						
and		170.0	173.0	3.0	0.41						
and		177.0	179.0	2.0	0.34						
<b>NBRC027</b>	Nyam	3.0	9.0	<b>6.0</b>	<b>2.83</b>	530200	637284	74	300	-60	110
and		39.0	55.0	16.0	0.48						
and		60.0	62.0	2.0	0.36						

## Newcore Gold Ltd. | Enchi Gold Project

2020 - 2021 Drill Results

Table accompanies news release dated September 21, 2021



Hole ID	Zone/Deposit	From (m)	To (m)	Length (m)	Au (g/t)	UTM East	UTM North	Elevation	Azimuth °	Dip °	Hole Length (m)
<b>NBRC028</b>	Nyam	32.0	36.0	4.0	0.46	530122	637161	76	300	-60	132
and		60.0	74.0	14.0	0.49						
<b>NBRC029</b>	Nyam	10.0	11.0	1.0	1.15	530142	637152	78	300	-60	150
and		59.0	61.0	2.0	0.82						
and		87.0	89.0	2.0	0.53						
<b>NBRC030</b>	Nyam	69.0	85.0	<b>16.0</b>	<b>1.17</b>	530180	637146	77	300	-60	180
and		102.0	104.0	2.0	0.53						
and		110.0	115.0	5.0	1.48						
and		150.0	155.0	5.0	0.34						
and		158.0	160.0	2.0	0.32						
<b>NBRC031</b>	Nyam	28.0	29.0	1.0	0.49	530297	637242	80	300	-60	210
and		104.0	106.0	2.0	0.32						
and		124.0	148.0	24.0	0.31						
and		158.0	164.0	6.0	1.48						
and		177.0	188.0	<b>11.0</b>	<b>1.28</b>						
<b>NBRC032</b>	Nyam	170.0	226.0	56.0	0.40	530507	637573	72	300	-60	258
<b>NBRC033</b>	Nyam	151.0	153.0	2.0	0.57	530909	638234	97	300	-60	264
and		201.0	214.0	13.0	1.00						
and		233.0	235.0	2.0	0.32						
<b>NBRC034</b>	Nyam	0.0	14.0	<b>14.0</b>	<b>0.59</b>	530760	638239	100	300	-60	156
<b>NBRC035</b>	Nyam	130.0	132.0	2.0	0.57	530910	638345	84	300	-60	156
and		135.0	137.0	2.0	0.54						
and		142.0	144.0	2.0	0.78						
<b>NBRC036</b>	Nyam	7.0	9.0	2.0	0.75	531135	638959	70	300	-60	102
and		87.0	88.0	1.0	0.38						
<b>NBRC037</b>	Nyam	6.0	7.0	1.0	0.34	531161	638947	79	300	-60	156
and		20.0	21.0	1.0	0.69						
and		68.0	77.0	9.0	0.46						
and		81.0	83.0	2.0	0.48						

## Newcore Gold Ltd. | Enchi Gold Project

2020 - 2021 Drill Results

Table accompanies news release dated September 21, 2021



Hole ID	Zone/Deposit	From (m)	To (m)	Length (m)	Au (g/t)	UTM East	UTM North	Elevation	Azimuth °	Dip °	Hole Length (m)
<b>NBRC038</b>	Nyam	109.0	112.0	3.0	0.52	531190	638936	68	300	-60	204
and		122.0	126.0	4.0	0.42						
and		130.0	132.0	2.0	0.33						
<b>NBRC039</b>	Nyam	7.0	29.0	<b>22.0</b>	<b>0.50</b>	531096	638870	72	300	-60	114
<b>NBRC040</b>	Nyam	52.0	70.0	18.0	0.30	531120	638857	75	300	-60	156
and		76.0	83.0	<b>7.0</b>	<b>1.05</b>						
<b>NBRC041</b>	Nyam	111.0	131.0	20.0	0.39	531147	638847	74	300	-60	201
<b>NBRC042A</b>	Nyam	9.0	15.0	6.0	0.40	531054	638780	83	300	-60	102
and		24.0	37.0	<b>13.0</b>	<b>0.62</b>						
<b>NBRC043</b>	Nyam	104.0	124.0	20.0	0.31	531099	638758	76	300	-60	180
<b>NBRC044</b>	Nyam	8.0	10.0	2.0	0.98	530696	638123	132	300	-60	162
and		17.0	20.0	3.0	0.53						
and		41.0	67.0	<b>26.0</b>	<b>1.17</b>						
<b>NBRC045</b>	Nyam	165.0	174.0	9.0	0.81	530544	637644	115	300	-60	252
and		179.0	219.0	<b>40.0</b>	<b>1.57</b>						
including		185.0	194.0	<b>9.0</b>	<b>5.40</b>						
<b>NBRC046</b>	Nyam	116.0	119.0	3.0	0.52	530527	637695	104	300	-60	186
and		124.0	147.0	<b>23.0</b>	<b>0.60</b>						
<b>NBRC047</b>	Nyam	182.0	205.0	23.0	0.48	530572	637672	112	300	-60	247
and		212.0	216.0	4.0	0.40						
and		222.0	247.0	<b>25.0</b>	<b>1.94</b>						
including		227.0	234.0	<b>7.0</b>	<b>5.78</b>						
<b>NBRC048</b>	Nyam	79.0	85.0	6.0	0.33	530333	637622	101	300	-60	114
and		95.0	101.0	6.0	0.31						
and		104.0	114.0	10.0	0.30						
<b>NBRC049</b>	Nyam	7.0	10.0	3.0	0.39	530360	637607	102	300	-60	134
and		13.0	14.0	1.0	0.37						

## Newcore Gold Ltd. | Enchi Gold Project

### 2020 - 2021 Drill Results

Table accompanies news release dated September 21, 2021



Hole ID	Zone/Deposit	From (m)	To (m)	Length (m)	Au (g/t)	UTM East	UTM North	Elevation	Azimuth °	Dip °	Hole Length (m)
<b>NBRC050</b>	Nyam	11.0	13.0	<b>2.0</b>	<b>1.23</b>	530339	637516	96	300	-60	120
and		23.0	27.0	<b>4.0</b>	<b>1.03</b>						
and		35.0	45.0	<b>10.0</b>	<b>0.67</b>						
and		50.0	53.0	3.0	0.35						
<b>NBRC051</b>	Nyam	15.0	16.0	1.0	0.30	530325	637479	93	300	-60	126
and		28.0	31.0	<b>3.0</b>	<b>0.99</b>						
and		38.0	47.0	<b>9.0</b>	<b>0.69</b>						
and		57.0	65.0	<b>8.0</b>	<b>0.51</b>						
<b>NBRC052</b>	Nyam	4.0	7.0	3.0	1.28	530267	637402	87	300	-60	115
and		17.0	22.0	5.0	0.31						
and		24.0	26.0	2.0	0.34						
and		38.0	40.0	2.0	0.34						
and		67.0	69.0	2.0	1.97						
<b>NBRC053</b>	Nyam	9.0	11.0	<b>2.0</b>	<b>0.86</b>	530292	637376	79	300	-60	155
and		42.0	44.0	2.0	0.32						
and		48.0	57.0	<b>9.0</b>	<b>1.32</b>						
and		100.0	107.0	7.0	0.33						
<b>NBRC054</b>	Nyam		no significant results			530206	637384	72	300	-60	115
<b>NBRC055</b>	Nyam	12.0	21.0	9.0	0.38	530229	637372	78	300	-60	144
and		102.0	103.0	1.0	1.04						
<b>NKRC001</b>	Nkwanta		no significant results			525094	633089	101	300	-55	100
<b>KKRC017A</b>	Kwakyekrom	45.0	48.0	3.0	0.52	528698	634833	127	298	-60	150
and		69.0	70.0	1.0	1.17						
and		89.0	120.0	<b>31.0</b>	<b>0.46</b>						
including		107.0	120.0	<b>13.0</b>	<b>0.72</b>						
<b>KKRC018</b>	Kwakyekrom	35.0	39.0	4.0	0.29	528658	634784	129	298	-60	120
and		86.0	92.0	6.0	0.80						
and		99.0	110.0	<b>11.0</b>	<b>2.35</b>						

## Newcore Gold Ltd. | Enchi Gold Project

2020 - 2021 Drill Results

Table accompanies news release dated September 21, 2021



Hole ID	Zone/Deposit	From (m)	To (m)	Length (m)	Au (g/t)	UTM East	UTM North	Elevation	Azimuth °	Dip °	Hole Length (m)
<b>KKRC019</b>	Kwakyekrom	4.0	7.0	3.0	0.36	528611	634738	128	298	-60	120
and		58.0	78.0	20.0	0.36						
including		59.0	63.0	4.0	0.50						
and incl.		70.0	76.0	6.0	0.64						
and		88.0	92.0	4.0	0.38						
and		102.0	104.0	2.0	0.50						
<b>KKRC020</b>	Kwakyekrom	26.0	28.0	2.0	0.79	528598	634714	133	298	-60	110
and		44.0	47.0	3.0	0.43						
and		60.0	75.0	15.0	0.48						
and		79.0	83.0	4.0	1.04						
<b>KKRC021</b>	Kwakyekrom	52.0	69.0	<b>17.0</b>	<b>0.57</b>	528592	634693	132	298	-60	114
and		97.0	104.0	7.0	0.94						
<b>KKRC022</b>	Kwakyekrom	41.0	67.0	<b>26.0</b>	<b>0.51</b>	528555	634617	124	298	-60	114
including		59.0	66.0	5.0	1.59						
and		101.0	104.0	3.0	0.57						
<b>KKRC023</b>	Kwakyekrom	34.0	40.0	<b>6.0</b>	<b>4.71</b>	528542	634595	117	298	-60	122
and		60.0	66.0	6.0	0.34						
<b>KKRC024</b>	Kwakyekrom	35.0	38.0	3.0	0.77	528550	634557	104	298	-60	130
and		59.0	74.0	15.0	0.44						
and		104.0	113.0	9.0	0.23						
<b>KKRC025</b>	Kwakyekrom	0.0	18.0	<b>18.0</b>	<b>0.45</b>	528502	634580	103	298	-60	100
including		13.0	17.0	4.0	1.00						
and		23.0	29.0	6.0	0.57						
and		69.0	77.0	8.0	0.21						
and		89.0	100.0	11.0	0.63						

## Newcore Gold Ltd. | Enchi Gold Project

2020 - 2021 Drill Results

Table accompanies news release dated September 21, 2021



Hole ID	Zone/Deposit	From (m)	To (m)	Length (m)	Au (g/t)	UTM East	UTM North	Elevation	Azimuth °	Dip °	Hole Length (m)
<b>KKRC026</b>	Kwakyekrom	20.0	24.0	<b>4.0</b>	<b>1.32</b>	528614	634705	128	298	-60	162
and		70.0	73.0	3.0	0.44						
and		80.0	94.0	<b>14.0</b>	<b>1.69</b>						
and		120.0	121.0	1.0	0.44						
and		126.0	128.0	2.0	0.63						
and		138.0	141.0	3.0	0.31						
<b>KKRC027</b>	Kwakyekrom	1.0	3.0	2.0	0.29	528611	634689	128	298	-60	168
and		49.0	51.0	2.0	0.42						
and		78.0	81.0	3.0	0.39						
and		84.0	101.0	<b>17.0</b>	<b>0.91</b>						
<b>KKRC028</b>	Kwakyekrom	111.0	137.0	<b>26.0</b>	<b>1.43</b>	528632	634668	126	298	-60	213
including		115.0	124.0	<b>9.0</b>	<b>3.31</b>						
and		149.0	157.0	8.0	0.34						
and		162.0	167.0	5.0	0.69						
and		176.0	180.0	4.0	0.39						
<b>KKRC029</b>	Kwakyekrom	21.0	45.0	<b>24.0</b>	<b>0.89</b>	528574	634699	133	298	-60	126
and		54.0	56.0	2.0	0.41						
and		116.0	118.0	2.0	0.35						
and		123.0	125.0	2.0	0.43						
<b>KKRC030</b>	Kwakyekrom	65.0	66.0	1.0	0.42	528653	634733	127	298	-60	180
and		68.0	69.0	1.0	0.46						
and		109.0	127.0	<b>18.0</b>	<b>0.97</b>						
and		145.0	147.0	2.0	0.43						
<b>KKRC031</b>	Kwakyekrom	30.0	32.0	2.0	0.78	528682	634774	131	298	-60	186
and		114.0	124.0	<b>10.0</b>	<b>2.97</b>						
and		162.0	168.0	<b>6.0</b>	<b>0.88</b>						
and		181.0	184.0	3.0	0.36						
<b>KKRC032</b>	Kwakyekrom	14.0	24.0	10.0	0.32	528570	634723	134	298	-60	114
and		56.0	63.0	7.0	0.40						



## Newcore Gold Ltd. | Enchi Gold Project

2020 - 2021 Drill Results

Table accompanies news release dated September 21, 2021



Hole ID	Zone/Deposit	From (m)	To (m)	Length (m)	Au (g/t)	UTM East	UTM North	Elevation	Azimuth °	Dip °	Hole Length (m)
<b>KKRC033</b>	Kwakyekrom	26.0	28.0	2.0	0.33	528569	634584	109	298	-60	126
and		47.0	49.0	2.0	0.41						
and		69.0	75.0	<b>6.0</b>	<b>1.19</b>						
<b>KKRC034</b>	Kwakyekrom	14.0	46.0	<b>32.0</b>	<b>0.68</b>	528517	634607	124	298	-60	102
and		67.0	74.0	7.0	0.58						
and		90.0	95.0	5.0	0.34						
<b>KKRC035</b>	Kwakyekrom	0.0	7.0	7.0	0.46	528532	634631	125	298	-60	108
and		17.0	25.0	8.0	0.82						
and		39.0	41.0	2.0	0.30						
<b>KKRC036</b>	Kwakyekrom	19.0	22.0	3.0	0.49	528625	634796	130	298	-60	114
and		28.0	31.0	3.0	0.41						
and		54.0	61.0	<b>7.0</b>	<b>1.95</b>						
and		93.0	114.0	21.0	0.41						
<b>KKRC037</b>	Kwakyekrom	44.0	46.0	2.0	0.35	528661	634846	126	298	-60	110
and		88.0	92.0	4.0	0.49						
and		105.0	107.0	2.0	4.12						
<b>KKRC038</b>	Kwakyekrom	36.0	29.0	3.0	0.38	528738	634809	128	298	-60	200
and		97.0	111.0	14.0	0.35						
and		126.0	128.0	2.0	0.37						
and		131.0	143.0	<b>12.0</b>	<b>0.83</b>						
and		153.0	170.0	<b>17.0</b>	<b>1.44</b>						
<b>KKRC039</b>	Kwakyekrom	28.0	38.0	10.0	0.31	528692	634909	129	298	-60	129
<b>KKRC040</b>	Kwakyekrom	12.0	39.0	27.0	0.34	528741	634889	127	298	-60	162
and		95.0	99.0	4.0	0.29						
and		107.0	109.0	2.0	1.29						
and		116.0	120.0	4.0	0.47						
<b>KKRC041</b>	Kwakyekrom	0.0	53.0	<b>53.0</b>	<b>0.79</b>	528466	634474	104	298	-60	120
and		70.0	84.0	14.0	0.45						

## Newcore Gold Ltd. | Enchi Gold Project

2020 - 2021 Drill Results

Table accompanies news release dated September 21, 2021



Hole ID	Zone/Deposit	From (m)	To (m)	Length (m)	Au (g/t)	UTM East	UTM North	Elevation	Azimuth °	Dip °	Hole Length (m)
<b>KKRC042</b>	Kwakyekrom	0.0	2.0	2.0	0.33	528440	634487	108	298	-60	100
and		38.0	39.0	1.0	0.50						
and		48.0	50.0	2.0	0.35						
and		56.0	62.0	6.0	0.47						
<b>KKRC043</b>	Kwakyekrom	73.0	83.0	<b>10.0</b>	<b>1.51</b>	528580	634606	123	298	-60	144
and		89.0	92.0	3.0	1.16						
and		138.0	140.0	2.0	0.90						
<b>KKRC044</b>	Kwakyekrom	14.0	22.0	8.0	0.49	528362	634281	143	298	-60	114
<b>KKRC045</b>	Kwakyekrom	80.0	87.0	<b>7.0</b>	<b>1.03</b>	528409	634257	142	298	-60	162
<b>KKRC046</b>	Kwakyekrom	55.0	79.0	24.0	0.50	528407	634372	123	298	-60	96
including		58.0	72.0	14.0	0.61						
<b>KKRC047</b>	Kwakyekrom	74.0	76.0	2.0	0.33	528454	634348	124	298	-60	138
and		88.0	96.0	8.0	0.41						
<b>KKRC048</b>	Kwakyekrom	24.0	26.0	2.0	0.46	528499	634456	106	298	-60	150
and		58.0	73.0	<b>15.0</b>	<b>1.29</b>						
and		111.0	122.0	<b>11.0</b>	<b>1.86</b>						
and		144.0	147.0	3.0	0.69						
<b>KKRC049</b>	Kwakyekrom	60.0	67.0	7.0	0.34	528539	634435	109	298	-60	213
and		117.0	120.0	3.0	0.91						
and		197.0	200.0	3.0	0.40						
and		208.0	213.0	<b>5.0</b>	<b>2.33</b>						
<b>KKRC050</b>	Kwakyekrom	0.0	3.0	3.0	0.37	528572	634653	131	298	-60	132
and		25.0	28.0	3.0	0.32						
and		36.0	56.0	20.0	0.55						
and		97.0	118.0	21.0	0.46						
including		97.0	108.0	11.0	0.71						

## Newcore Gold Ltd. | Enchi Gold Project

### 2020 - 2021 Drill Results

Table accompanies news release dated September 21, 2021



Hole ID	Zone/Deposit	From (m)	To (m)	Length (m)	Au (g/t)	UTM East	UTM North	Elevation	Azimuth °	Dip °	Hole Length (m)
<b>KKRC051</b>	Kwakyekrom	148.0	198.0	<b>50.0</b>	<b>0.61</b>	528656	634656	119	298	-60	246
including		164.0	173.0	<b>9.0</b>	<b>1.36</b>						
and		210.0	212.0	2.0	0.44						
and		225.0	227.0	2.0	1.02						
and		241.0	244.0	3.0	0.63						
<b>KKRC052</b>	Kwakyekrom	54.0	55.0	1.0	0.64	528640	634698	122	298	-60	192
and		75.0	76.0	1.0	0.52						
and		112.0	132.0	<b>20.0</b>	<b>1.19</b>						
including		113.0	118.0	<b>5.0</b>	<b>2.75</b>						
<b>KKRC053</b>	Kwakyekrom	145.0	149.0	4.0	0.90	528667	634679	120	298	-60	240
and		172.0	190.0	<b>18.0</b>	<b>0.75</b>						
and		210.0	212.0	2.0	0.38						
<b>KKRC054</b>	Kwakyekrom	98.0	109.0	11.0	0.58	528602	634632	128	298	-60	156
<b>KKRC055</b>	Kwakyekrom	8.0	12.0	<b>4.0</b>	<b>1.21</b>	528590	634565	106	298	-60	168
and		98.0	99.0	1.0	0.70						
and		108.0	121.0	<b>13.0</b>	<b>0.94</b>						
and		162.0	163.0	1.0	0.54						
<b>KKRC056</b>	Kwakyekrom	81.0	88.0	7.0	0.23	528600	634591	114	298	-60	189
and		105.0	106.0	1.0	0.45						
and		110.0	125.0	<b>15.0</b>	<b>0.96</b>						
including		110.0	119.0	<b>9.0</b>	<b>1.46</b>						
and		129.0	130.0	1.0	0.35						
and		134.0	141.0	7.0	0.23						
and		160.0	189.0	<b>29.0</b>	<b>0.94</b>						
including		170.0	176.0	<b>6.0</b>	<b>2.65</b>						
<b>KKRC057</b>	Kwakyekrom	90.0	91.0	1.0	0.31	528636	634623	120	298	-60	202
and		119.0	121.0	2.0	0.31						
and		131.0	148.0	17.0	0.25						
and		192.0	194.0	2.0	0.29						

## Newcore Gold Ltd. | Enchi Gold Project

2020 - 2021 Drill Results

Table accompanies news release dated September 21, 2021



Hole ID	Zone/Deposit	From (m)	To (m)	Length (m)	Au (g/t)	UTM East	UTM North	Elevation	Azimuth °	Dip °	Hole Length (m)
<b>KKRC058</b>	Kwakyekrom	70.0	72.0	2.0	0.53	528812	634852	113	298	-60	267
and		78.0	90.0	2.0	0.28						
including		85.0	87.0	2.0	0.45						
and		91.0	92.0	1.0	0.32						
and		105.0	106.0	1.0	0.56						
and		146.0	147.0	1.0	0.33						
and		171.0	174.0	3.0	1.47						
and		179.0	181.0	2.0	0.28						
and		194.0	195.0	1.0	0.39						
and	230.0	232.0	2.0	0.64							
<b>KKRC059</b>	Kwakyekrom	148.0	151.0	3.0	1.13	528776	634792	118	298	-60	276
and		169.0	171.0	2.0	0.50						
and		177.0	184.0	7.0	0.63						
and		217.0	218.0	1.0	1.63						
<b>KKRC060</b>	Kwakyekrom	148.0	156.0	8.0	0.66	528710	634749	127	298	-60	234
and		168.0	177.0	9.0	0.71						
and		189.0	190.0	1.0	1.41						
<b>KKRC061C</b>	Kwakyekrom	154.0	156.0	2.0	0.45	528696	634718	117	298	-60	210
<b>KKRC062</b>	Kwakyekrom	no significant results				528326	634188	167	298	-60	107
<b>KKRC063</b>	Kwakyekrom	86.0	89.0	3.0	0.44	528364	634167	169	298	-60	186
and		123.0	124.0	1.0	0.51						
and		154.0	155.0	1.0	0.78						
<b>KKRC064</b>	Kwakyekrom	84.0	85.0	1.0	0.61	528384	633885	129	298	-60	144
and		114.0	123.0	9.0	0.50						
<b>KKRC065</b>	Kwakyekrom	94.0	105.0	11.0	0.90	528409	633870	123	298	-60	200
and		141.0	144.0	3.0	0.64						
<b>KJRC011</b>	Kojina Hill	no significant results				528887	637281	110	300	-65	170
<b>KJRC012</b>	Kojina Hill	218.0	222.0	<b>4.0</b>	<b>1.34</b>	528887	637281	110	300	-75	252
and		229.0	230.0	1.0	0.83						

## Newcore Gold Ltd. | Enchi Gold Project

2020 - 2021 Drill Results

Table accompanies news release dated September 21, 2021



Hole ID	Zone/Deposit	From (m)	To (m)	Length (m)	Au (g/t)	UTM East	UTM North	Elevation	Azimuth °	Dip °	Hole Length (m)
<b>KJRC013</b>	Kojina Hill	6.0	13.0	7.0	0.33	528897	637243	123	300	-60	170
and		83.0	113.0	<b>30.0</b>	<b>0.39</b>						
including		83.0	91.0	<b>8.0</b>	<b>0.51</b>						
and incl.		94.0	99.0	5.0	0.56						
and incl.		109.0	113.0	4.0	0.57						
<b>KJRC014</b>	Kojina Hill	57.0	60.0	3.0	0.37	528897	637243	123	300	-75	288
and		209.0	212.0	3.0	0.37						
<b>KJRC015</b>	Kojina Hill	126.0	127.0	1.0	0.40	528867	637240	130	300	-60	192
and		139.0	140.0	1.0	0.42						
<b>KJRC016</b>	Kojina Hill	174.0	175.0	1.0	0.31	528871	637239	127	300	-75	252
and		208.0	209.0	1.0	0.30						
and		244.0	246.0	2.0	0.33						
<b>KJRC017</b>	Kojina Hill	108.0	112.0	4.0	0.86	528838	637203	149	300	-65	162
and		119.0	122.0	3.0	0.28						
and		125.0	145.0	<b>20.0</b>	<b>1.09</b>						
including		125.0	129.0	<b>4.0</b>	<b>2.52</b>						
and		155.0	156.0	1.0	0.47						
<b>KJRC018</b>	Kojina Hill	48.0	50.0	2.0	0.30	528860	637219	141	300	-65	150
and		98.0	102.0	4.0	0.68						
<b>KJRC019</b>	Kojina Hill	81.0	89.0	8.0	0.50	528871	637239	129	270	-70	282
and		121.0	122.0	1.0	0.60						
<b>KJRC020</b>	Kojina Hill	67.0	69.0	2.0	0.44	528805	637400	97	120	-55	90
<b>KJRC021</b>	Kojina Hill		no significant results			528774	637413	88	120	-55	132
<b>KJRC022</b>	Kojina Hill	2.0	3.0	1.0	0.62	528789	637334	113	120	-55	120
and		44.0	49.0	<b>5.0</b>	<b>1.68</b>						
and		61.0	120.0	<b>59.0</b>	<b>0.79</b>						
including		80.0	90.0	<b>10.0</b>	<b>3.03</b>						
<b>KJRC023</b>	Kojina Hill		no significant results			528766	637358	64	120	-55	168

## Newcore Gold Ltd. | Enchi Gold Project

### 2020 - 2021 Drill Results

Table accompanies news release dated September 21, 2021



Hole ID	Zone/Deposit	From (m)	To (m)	Length (m)	Au (g/t)	UTM East	UTM North	Elevation	Azimuth °	Dip °	Hole Length (m)
<b>KJRC024</b>	Kojina Hill	86.0	100.0	14.0	0.87	528786	637377	107	120	-55	160
and		117.0	132.0	<b>15.0</b>	<b>1.44</b>						

1. Intervals reported are hole lengths with true width estimated to be 75 - 85%.
2. Length-weighted averages from uncut assays.
3. All drilling completed by independent contractor.
4. All drilling samples sealed on site and delivered directly to independent lab Intertek Mineral Limited located in Tarkwa, Ghana for preparation and 50g Fire Assay with AAS finish.
5. QA/QC procedures include industry standard inclusion of standards, blanks, and duplicates in all sample batches.