



NEWS RELEASE

Newcore Gold - Unlocking the Potential of the Enchi Gold Project in Ghana through Aggressive Exploration

A Summary of Newcore Gold's Achievements in 2021

December 15, 2021

TSX-V: NCAU, OTCQX: NCAUF

Vancouver, BC - Newcore Gold Ltd. ("Newcore" or the "Company") (TSX-V: NCAU, OTCQX: NCAUF) is pleased to provide a summary of the Company's achievements in 2021, including the results of an updated independent Preliminary Economic Assessment ("PEA") and updated, pit constrained, Inferred Mineral Resource released in June, as well as strong results from the ongoing 90,000 metre drill program at the Company's 100% owned Enchi Gold Project ("Enchi" or the "Project") in Ghana.

Highlights from Newcore Gold's 2021 Activities at Enchi

- **Largest drill program to ever be completed on the Project underway.**
 - 90,000 metre drill program ongoing, focused on both resource expansion and resource discovery, with assay results received and released for 62,870 metres.
 - Drilling intersected the highest-grade gold interval to date, with RC hole KBRC250 at the Boin Gold Deposit ("Boin") intersecting 95.16 grams per tonne gold ("g/t Au") over 2.0 metres ("m") from 109 m.
 - Approximately 15,000 metres of the ongoing drill program is focused on testing earlier stage targets on the property, proving up the potential for additional resource areas.
 - Approximately 16,000 metres of diamond drilling is testing for mineralization at depth, focused on proving out the potential for high-grade shoots (encountered at other greenstone hosted gold deposits along the Sefwi-Bibiani belt).
- **Robust positive updated PEA and mineral resource estimate completed mid-2021.**
 - Strong project economics with low capital intensity. At a gold price of US\$1,650/oz: US\$212 million after-tax NPV_{5%} and a 42% after-tax IRR; at a gold price of US\$1,850/oz: US\$302 million after-tax NPV_{5%} and a 54% after-tax IRR.
 - Updated Inferred Mineral Resource Estimate of 70.4 Mt grading 0.62 g/t Au containing 1.41 million ounces gold, incorporated 20,195 m from the 90,000 m drill program.
 - Outlined the potential for a robust project with significant growth potential.
- **All deposits remain open along strike and at depth, with drilling continuing to highlight the potential for resource growth in both shallow oxides and at depth.**
 - Wide zones of near surface mineralization encountered at all resource areas, with results including 1.00 g/t Au over 103.0 m from 113 m (hole KBRC276 at Boin).
 - Deeper drilling has highlighted potential for resource expansion at depth, with results including 4.51 g/t Au over 13.0 m from 236 m (hole NBDD048 at Nyam).

Luke Alexander, President and CEO of Newcore stated, "We had an incredibly busy and successful year as we aggressively advanced our Enchi Gold Project through the drill bit and completed a robust updated PEA and mineral resource estimate for the Project. Results from

the ongoing drill program have not only encountered the highest-grade gold intervals to date, but also the longest gold intercepts to date. I want to thank all our shareholders and stakeholders for their continued support. With strong institutional and capital markets support, and a management and board that is strongly aligned with shareholders through our 27% equity ownership, we look forward to continuing to build on the momentum we have achieved to date as we continue aggressively drilling Enchi to prove out its multi-million-ounce potential in the coming years."

Greg Smith, VP Exploration of Newcore stated, "Drilling consistently encounters wide zones of near surface mineralization, showcasing the potential for resource growth of the oxide mineralization that is amenable to heap leach processing. We are also very encouraged with the first deeper drilling to be completed on the project, with diamond drilling encountering high-grade mineralization at vertical depths of 250 to 300 metres. Deeper drilling completed to date has only tested a vertical depth of up to 325 metres, with all deposits remaining open along strike and at depth. We are also now testing new areas on the property to prove out the district scale potential at Enchi, with first pass drilling being completed on several prospective targets. We are excited to be defining the district-scale, multi-million-ounce potential at Enchi as we complete our ongoing 90,000 metre drill program into 2022."

For the total planned 90,000 metre drill program, assay results have been released for 359 holes representing 62,870 metres. Select highlighted results reported to date include:

Table 1 - Enchi Gold Project Drill Highlights (2020 - 2021 Drill Program)

Hole ID	From (m)	To (m)	Length (m)	Au (g/t)
SEWUM				
SWRC093	61.0	164.0	103.0	0.82
SWRC076	39.0	88.0	49.0	0.91
and	104.0	120.0	16.0	3.04
SWRC107	4.0	81.0	77.0	0.63
SWRC082	36.0	60.0	24.0	2.02
BOIN				
KBRC250	109.0	111.0	2.0	95.16
KBRC276	113.0	216.0	103.0	1.00
KBDD064	121.0	195.0	74.0	1.28
KBRC141	48.0	95.0	47.0	1.67
KBRC236	55.0	124.0	69.0	0.90
KBRC185	137.0	204.0	67.0	0.85
NYAM				
NBRC075	0.0	35.0	35.0	2.04
NBRC045	179.0	219.0	40.0	1.57
including	185.0	194.0	9.0	5.40
NBRC017	8.0	53.0	45.0	1.38
NBDD048	236.0	249.0	13.0	4.51
including	237.5	245.2	7.7	7.40

Hole ID	From (m)	To (m)	Length (m)	Au (g/t)
NBRC047	222.0	247.0	25.0	1.94
including	227.0	234.0	7.0	5.78
NBDD052	321.0	336.0	15.0	3.21
KWAKYEKROM				
KKRC041	0.0	53.0	53.0	0.79
KKRC056	160.0	189.0	29.0	0.94
KOJINA HILL				
KJRC022	61.0	120.0	59.0	0.79

Notes:

1. See detailed table for complete results
2. Intervals reported are hole lengths with true width estimated to be 75 - 85%
3. Length-weighted averages from uncut assays

A copy of the 2021 year in review presentation, along with a replay of Newcore's investor webinar "2021 Year in Review & Virtual Site Tour", is available on Newcore's [website](#).

Plan maps and select cross sections can be viewed at the following link:

https://newcoregold.com/site/assets/files/5747/2021_12-ncau-nr-enchi-plan-map-cs.pdf

A complete list of the 2020 - 2021 drill results released to date, including hole details, can be viewed at:

https://newcoregold.com/site/assets/files/5747/2021_12-ncau-enchi-2020-2021-drill-results.pdf

Sewum Gold Zone

As part of the current drill program results have been received and released for a total of 57 holes representing 12,719 metres at Sewum. Drilling has expanded the drill tested strike extent to 3.5 kms, with the current pit constrained mineral resource defined across a strike extent of 2.4 kms. Drilling has intersected widespread gold mineralization, with **SWRC094** one of the deepest intercepts to date at Sewum encountering 1.26 g/t Au over 16.0 m from 115 m and 2.35 g/t Au over 8.0 m from 175 m.

Sewum is the largest of the four deposits which comprise the pit constrained Inferred Mineral Resource Estimate at Enchi, hosting approximately 51% of the currently defined resource (41.0 million tonnes grading 0.55 g/t Au containing 725,200 ounces). Sewum is located 15 kilometres south of the town of Enchi, with nearby roads and power and further access provided by a series of drill roads. Sewum is outlined on surface by a six-kilometre-long and one-to-two-kilometre-wide gold in soil anomaly. An airborne geophysical anomaly coincident with the Sewum Deposit defines a series of sub parallel and intersecting structures. To date, approximately 50% of the gold-in-soil anomaly is untested by drilling.

Boin Gold Zone

As part of the current drill program results have been received and released for a total of 155 holes representing 24,976 metres at Boin. Drilling has expanded the drill tested strike extent to 4.2 kms, with the current pit constrained mineral resource defined across a strike extent of 2.8 kms. Wide-spaced exploration drilling has extended gold mineralization both

400 metres to the north and 1 km to the south of the current limits of the pit constrained resource. RC hole **KBRC250** intersected the highest-grade interval to date of 95.16 g/t Au over 2.0 m from 109 m, with a second structure of 13.22 g/t Au over 1.0 m from 120 m (true widths unknown). Drilling at Boin also continues to intersect wide zones of mineralization near surface, RC hole **KBRC236** intersected 0.90 g/t Au over 69.0 m from 55 m, including 2.06 g/t Au over 12.0 m from 61 m.

Boin is one of the primary deposits which comprise the pit constrained Inferred Mineral Resource Estimate at Enchi, with Boin hosting approximately 36% of the currently defined resource (21.8 million tonnes grading 0.72 g/t Au containing 504,800 ounces). Boin is located 10 kilometres south of the town of Enchi, with nearby roads and power and further access provided by a series of drill roads. Boin is outlined on surface by a greater than six-kilometre-long by up to one-kilometre-wide gold in soil anomaly. An airborne geophysical anomaly coincident with the Boin structure extends for a further two kilometres north and four kilometres south beyond the limits of current drilling. To date, approximately 50% of the gold-in-soil anomaly is untested by drilling.

Nyam Gold Zone

As part of the current drill program results have been received and released for a total of 83 holes representing 14,821 metres at Nyam. Drilling has expanded the drill tested strike extent to 3.0 kms, with the current pit constrained mineral resource defined across a strike extent of 1.4 kms. Some of the deepest intersections of mineralization drilled to date at Enchi have been at Nyam, with deeper drilling to date defining two northerly plunging high-grade zones down to a depth of 300 metres and remaining open for further expansion. Hole **NBDD052** intersected a high-grade gold mineralized structure grading 5.57 g/t Au over 8.0 m from 322 m, within a broader zone of 3.21 g/t Au over 15.0 m from 321 m. Drilling at Nyam also continues to encounter multiple wide zones of near surface gold mineralization, with hole **NBRC075** intersecting 2.04 g/t Au over 35.0 m within the oxide zone from surface.

Nyam is one of the four deposits which comprise the pit constrained Inferred Mineral Resource Estimate at Enchi (4.9 million tonnes grading 0.82 g/t Au containing 129,000 ounces). Nyam is located 15 kilometres east of the town of Enchi, with nearby roads and power and further access provided by a series of drill roads. An airborne geophysical anomaly coincident with the Nyam Gold Deposit shows a complex series of linear high conductivity trends, reflective of the multiple sub-parallel gold-bearing structures. To date, approximately 30% of the gold-in-soil anomaly is untested by drilling.

Kwakyekrom Gold Zone

As part of the current drill program results have been received and released for a total of 49 holes representing 7,666 metres at Kwakyekrom. Drilling has expanded the drill tested strike extent to 1.3 kms, with the current pit constrained mineral resource defined across a strike extent of 500 m. Gold mineralization is open along strike and down dip.

Kwakyekrom is one of the four deposits which comprise the pit constrained Inferred Mineral Resource Estimate at Enchi (2.7 million tonnes grading 0.64 g/t Au containing 55,600 ounces), with an initial resource defined at Kwakyekrom as part of the updated Mineral Resource Estimate announced in June 2021. Kwakyekrom is located 15 kilometres southeast of the town of Enchi, with nearby roads and power and further access provided by a series of drill roads.

The Kwakyekrom structure is interpreted to be an extension of the Nyam structure and is located south of Nyam. To date, approximately 40% of the gold-in-soil anomaly is untested by drilling.

Other Targets with No Defined Mineral Resource

- **Kojina Hill** is an advanced target on the property that is outlined on surface by a two-kilometre-long by one-kilometre-wide gold-in-soil anomaly. It is related to a structure sub-parallel to the Nyam Shear Zone and located 1.5 kilometres west of the Nyam Deposit. As part of the 2020 - 2021 drilling program, 14 holes totalling 2,588 metres have been completed. Kojina Hill does not currently have a mineral resource estimate and more drilling is planned targeting extensions to the gold mineralization.
- **Eradi** is one of the previously drilled target areas at Enchi where previous trenching returned 1.67 g/t Au over 36.9 m and 10 wide spaced shallow drill holes intersected gold mineralized intervals of 0.60 g/t Au over 27.0 m from 25 m, including 1.30 g/t Au over 10.0 m from 42 m, 1.15 g/t Au over 10.0 m from 58 m, 0.60 g/t Au over 17.0 m from 5 m, and 1.02 g/t Au over 10.0 m from 22 m. The zone has been tested at wide spacings over a strike length of 1.5 kilometres and remains open along strike and to depth. Drilling was completed in late 2021, results are pending.
- **Sewum South** is the largest gold-in-soil anomaly on the Project with a dimension of three kilometres by two kilometres and is located two kilometres south of the current Sewum Deposit. Mineralization is interpreted to be related to several sub-parallel and intersecting structural trends defined by the geophysical signatures with similarities to the Sewum Deposit. A trenching program was completed as part of the 2020 - 2021 work program, followed by a first pass drill program that was completed in late 2021, results are pending.
- **Tokosea** is a large anomalous area located in the central portion of the Enchi Gold Project, one kilometre north of Sewum and two kilometres west of Kwakyekrom. Tokosea is defined by a series of gold-in-soil anomalies over an area four kilometres long and one to two kilometres wide. Interpretation of the airborne geophysical response has a series of splays extending from the main Sewum and Nyam structures crossing the area. Previous work has also included limited trenching and the area has historical small-scale gold mining dating back more than 100 years. First pass RC drilling commenced in late 2021 with results expected in the first half of 2022.

2021 Updated Preliminary Economic Assessment

Newcore announced the positive results of an updated independent PEA completed for the Company's 100%-owned Enchi Gold Project in Ghana on [June 8, 2021](#). The PEA was prepared by BBA E&C Inc. and contemplated a technically simple, open pit mine and heap leach operation processing 6.6 million tonnes per annum ("mtpa") utilizing contract mining. At a gold price of US\$1,650/oz, the PEA highlighted strong project economics with an after-tax net present value discounted at 5% ("NPV_{5%}") of US\$212 million and a 42% after-tax internal rate of return ("IRR"). At a gold price of US\$1,850/oz, these economics increase to an after-tax NPV_{5%} of US\$302 million and after-tax IRR of 54%.

The PEA is preliminary in nature, includes Inferred mineral resources that are considered too speculative geologically to have economic considerations applied to them that would enable them to be categorized as mineral reserves, and there is no certainty that PEA results will be

realized. Mineral resources are not mineral reserves and do not have demonstrated economic viability.

Further detail regarding the updated PEA for the Project is summarized in the Company's news release dated [June 8, 2021](#), as well as in the technical report which is available on Newcore's website at [newcoregold.com](#) and under the Company's SEDAR profile at [www.sedar.com](#).

Enchi Gold Project Mineral Resource Estimate

The Enchi Gold Project hosts a pit constrained Inferred Mineral Resource of 70.4 million tonnes grading 0.62 g/t Au containing 1.41 million ounces gold (see Newcore news release dated [June 8, 2021](#)). Mineral resource estimation practices are in accordance with CIM Estimation of Mineral Resource and Mineral Reserve Best Practice Guidelines (November 29, 2019) and follow CIM Definition Standards for Mineral Resources and Mineral Reserves (May 10, 2014), that are incorporated by reference into National Instrument 43-101 ("NI 43-101"). The Mineral Resource Estimate was prepared by independent qualified person Todd McCracken, P. Geo. of BBA E&C Inc. The technical report, titled "Preliminary Economic Assessment for the Enchi Gold Project, Enchi, Ghana" has an effective date of June 8, 2021, and is available under the Company's profile on SEDAR at [www.sedar.com](#).

2020 - 2021 Enchi Drilling Program

A 90,000 metre discovery and resource expansion drilling program is underway at Enchi. The program includes both RC and diamond drilling and has included the first deeper drilling on the Project. This drill program includes testing extensions of the existing resource areas while also testing a number of high priority exploration targets outside of the Inferred Mineral Resource. Drilling is focused on step out extensions and exploration drilling at the Sewum, Boin, Nyam and Kwakyekrom Deposits. Additional drilling is planned at previously drilled zones that are outside of the resource area (Kojina Hill and Eradi), along with first pass drilling to test a series of kilometre-scale gold-in-soil anomalous zones with no prior drilling (Nkwanta, Sewum South and other anomalies). All zones represent high priority targets based on geological, geochemical and geophysical surface work and previous trenching and drilling.

COVID-19 Protocols

Newcore's first priority is the health and safety of all employees, contractors, and local communities. The Company is following all Ghana guidelines and requirements related to COVID-19. The Company has implemented COVID-19 protocols for its ongoing drill program consisting of the mandatory use of personal protective equipment (including facemasks for all employees), maintaining social distancing, frequent hand washing, and daily temperature checks at the start of each shift.

Newcore Gold Best Practice

Newcore is committed to best practice standards for all exploration, sampling and drilling activities. Drilling was completed by an independent drilling firm using industry standard RC and Diamond Drill equipment. Analytical quality assurance and quality control procedures include the systematic insertion of blanks, standards and duplicates into the sample strings. Samples are placed in sealed bags and shipped directly to Intertek Labs located in Tarkwa, Ghana for 50 gram gold fire assay.

Qualified Person

Mr. Gregory Smith, P. Geo, Vice President of Exploration of Newcore, is a Qualified Person as defined by NI 43-101, and has reviewed and approved the technical data and information contained in this news release. Mr. Smith has verified the technical and scientific data disclosed herein and has conducted appropriate verification on the underlying data including confirmation of the drillhole data files against the original drillhole logs and assay certificates.

About Newcore Gold Ltd.

Newcore Gold is advancing its Enchi Gold Project located in Ghana, Africa's largest gold producer⁽¹⁾. The Project currently hosts an Inferred Mineral Resource of 1.41 million ounces of gold at 0.62 g/t⁽²⁾. Newcore Gold offers investors a unique combination of top-tier leadership, who are aligned with shareholders through their 27% equity ownership, and prime district scale exploration opportunities. Enchi's 216 km² land package covers 40 kilometres of Ghana's prolific Bibiani Shear Zone, a gold belt which hosts several 5 million-ounce gold deposits, including Kinross' Chirano mine 50 kilometers to the north. Newcore's vision is to build a responsive, creative and powerful gold enterprise that maximizes returns for shareholders.

On Behalf of the Board of Directors of Newcore Gold Ltd.

Luke Alexander
President, CEO & Director

For further information, please contact:

Mal Karwowska | Vice President, Corporate Development and Investor Relations
+1 604 484 4399
info@newcoregold.com
www.newcoregold.com

(1) Source: Production volumes for 2020 as sourced from the World Gold Council

(2) Notes for Inferred Mineral Resource Estimate:

1. CIM definition standards were followed for the resource estimate.
2. The 2021 resource models used ordinary kriging (OK) grade estimation within a three-dimensional block model with mineralized zones defined by wireframed solids and constrained by pits shell for Sewum, Boin and Nyam. Kwakyekrom used Inverse Distance squared (ID2).
3. A base cut-off grade of 0.2 g/t Au was used with a capping of gold grades varied by deposit and zone.
4. A US\$1,650/ounce gold price, open pit with heap leach operation was used to determine the cut-off grade of 0.2 g/t Au. Mining costs of US\$1.40 for oxides, US\$2.10 for transition, and US\$2.60 for fresh rock per mined tonne and G&A and milling costs of US\$6.83/milled tonne. The Inferred Mineral Resource Estimate is pit constrained.
5. Metallurgical recoveries have been applied to four individual deposits and in each case three material types (oxide, transition, and fresh rock) with average recoveries of 77% for Sewum, 79% for Boin, 60% for Nyam and 72% for Kwakyekrom.
6. A density of 2.20 g/cm³ for oxide, 2.45 g/cm³ for transition, and 2.70 g/cm³ for fresh rock was applied.
7. Optimization pit slope angles varied based on the rock types.
8. Mineral Resources that are not mineral reserves do not have economic viability. Numbers may not add due to rounding.
9. These numbers are from the technical report titled "Preliminary Economic Assessment for the Enchi Gold Project, Enchi, Ghana", with an effective date of June 8, 2021, prepared for Newcore Gold by BBA E&C Inc. in accordance with National Instrument 43-101 *Standards of Disclosure for Mineral Projects* and is available under Newcore's SEDAR profile at www.sedar.com.

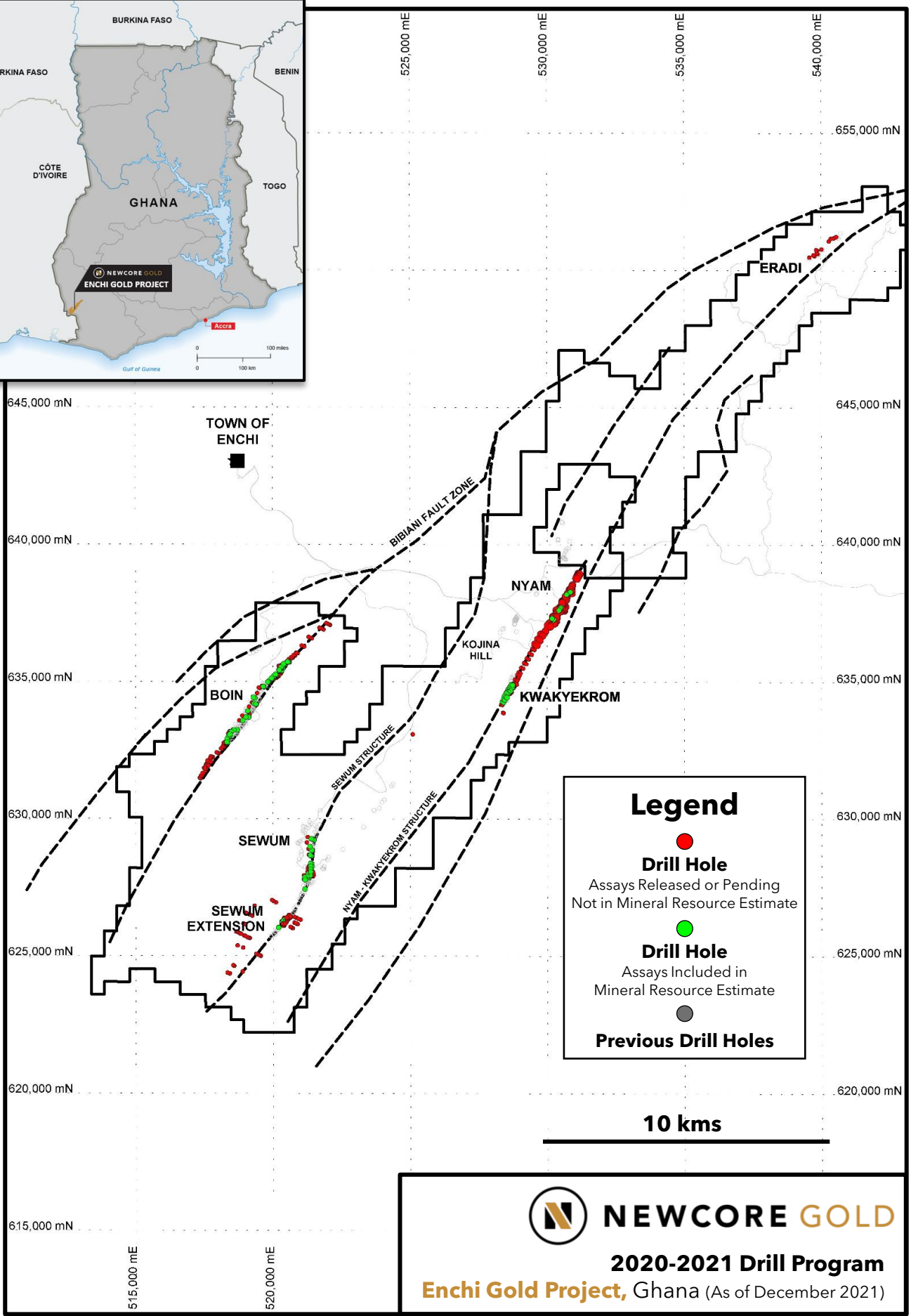
Neither the TSX Venture Exchange nor its Regulation Services Provider (as that term is defined in the policies of the TSX Venture Exchange) accepts responsibility for the adequacy or accuracy of this release.

Cautionary Note Regarding Forward-Looking Statements

This news release includes statements that contain "forward-looking information" within the meaning of the applicable Canadian securities legislation ("forward-looking statements"). All statements, other than statements of historical fact, are forward-looking statements and are based on expectations, estimates and projections as at the date of this news release. Any statement that involves discussion with respect to predictions, expectations, beliefs, plans, projections, objectives, assumptions, future events or performance (often, but not always using phrases such as "plans", "expects", "is expected", "budget", "scheduled", "estimates", "forecasts", "intends", "anticipates", or "believes" or variations (including negative variations) of such words and phrases, or state that certain actions, events or results "may", "could", "would", "might" or "will" be taken, occur or be achieved) are not statements of historical fact and may be forward-looking statements. In this news release, forward-looking statements relate, among other things, to: statements about the estimation of mineral resources; results of our ongoing drill campaign, magnitude or quality of mineral deposits; anticipated advancement of mineral properties or programs; and future exploration prospects.

These forward-looking statements, and any assumptions upon which they are based, are made in good faith and reflect our current judgment regarding the direction of our business. The assumptions underlying the forward-looking statements are based on information currently available to Newcore. Although the forward-looking statements contained in this news release are based upon what management of Newcore believes, or believed at the time, to be reasonable assumptions, Newcore cannot assure its shareholders that actual results will be consistent with such forward-looking statements, as there may be other factors that cause results not to be as anticipated, estimated or intended. Forward-looking information also involves known and unknown risks, uncertainties and other factors which may cause the actual results, performance or achievements of the Company to be materially different from any future results, performance or achievements expressed or implied by the forward-looking information. Such factors include, among others: risks related to the speculative nature of the Company's business; the Company's formative stage of development; the Company's financial position; possible variations in mineralization, grade or recovery rates; actual results of current exploration activities; fluctuations in general macroeconomic conditions; fluctuations in securities markets; fluctuations in spot and forward prices of gold and other commodities; fluctuations in currency markets (such as the Canadian dollar to United States dollar exchange rate); change in national and local government, legislation, taxation, controls, regulations and political or economic developments; risks and hazards associated with the business of mineral exploration, development and mining (including environmental hazards, unusual or unexpected geological formations); the presence of laws and regulations that may impose restrictions on mining; employee relations; relationships with and claims by local communities; the speculative nature of mineral exploration and development (including the risks of obtaining necessary licenses, permits and approvals from government authorities); and title to properties.

Forward-looking statements contained herein are made as of the date of this news release and the Company disclaims any obligation to update any forward-looking statements, whether as a result of new information, future events or results, except as may be required by applicable securities laws. There can be no assurance that forward-looking information will prove to be accurate, as actual results and future events could differ materially from those anticipated in such statements. Accordingly, readers should not place undue reliance on forward-looking information.



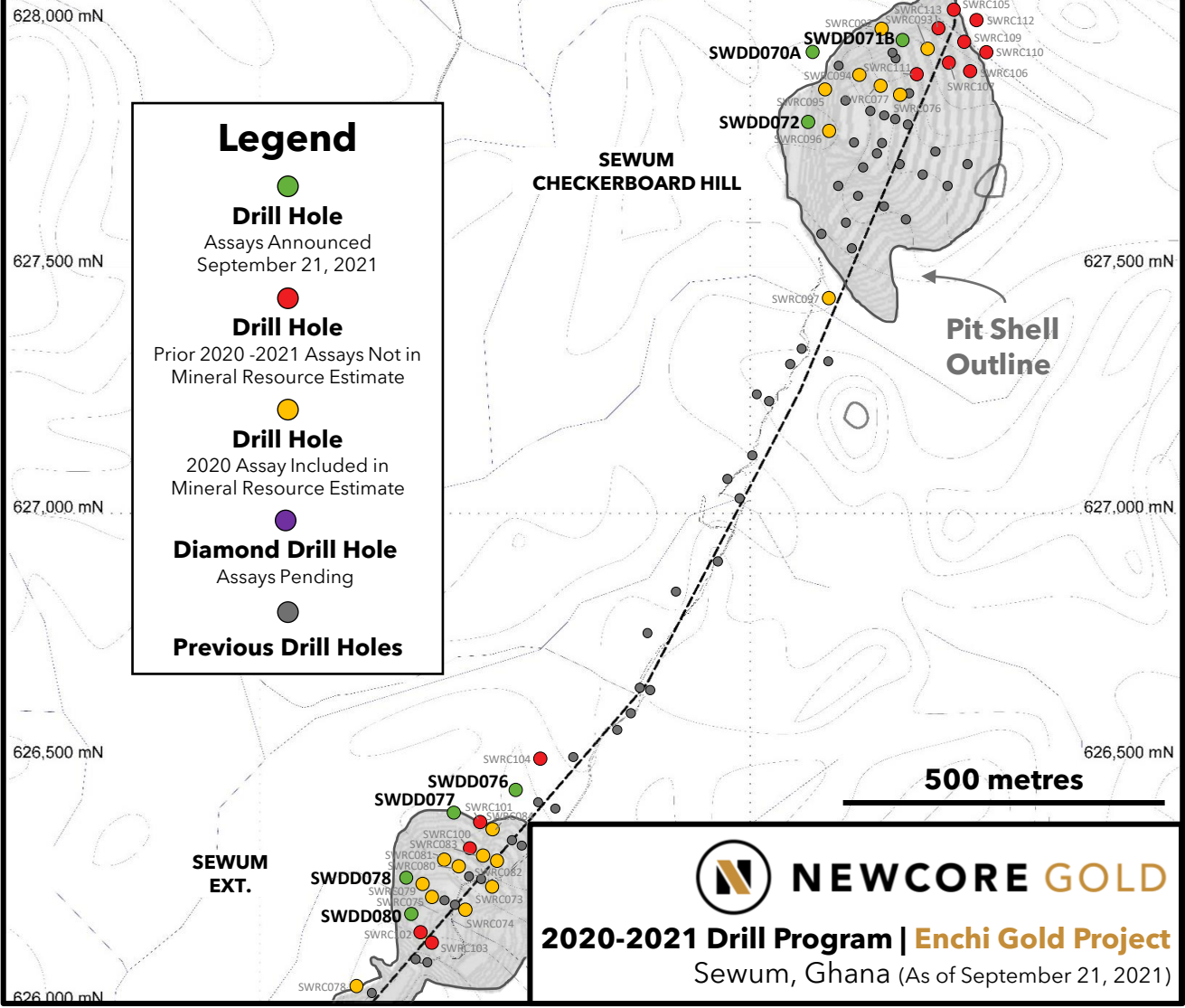
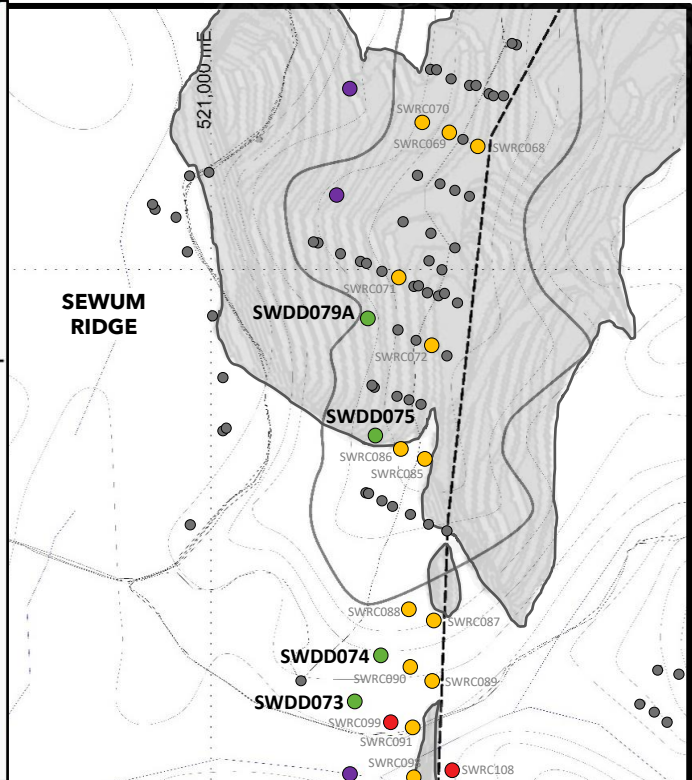
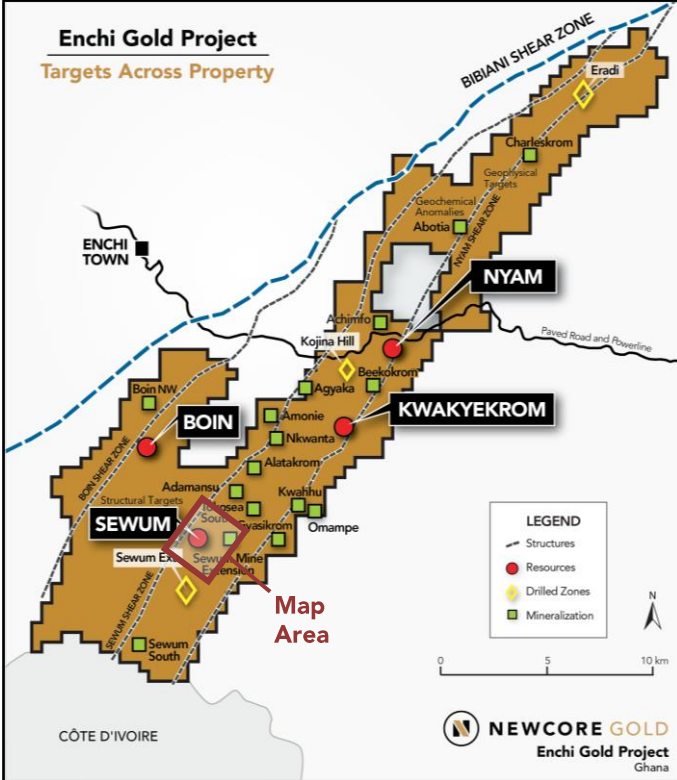
Legend

- **Drill Hole**
Assays Released or Pending
Not in Mineral Resource Estimate
- **Drill Hole**
Assays Included in
Mineral Resource Estimate
- **Previous Drill Holes**

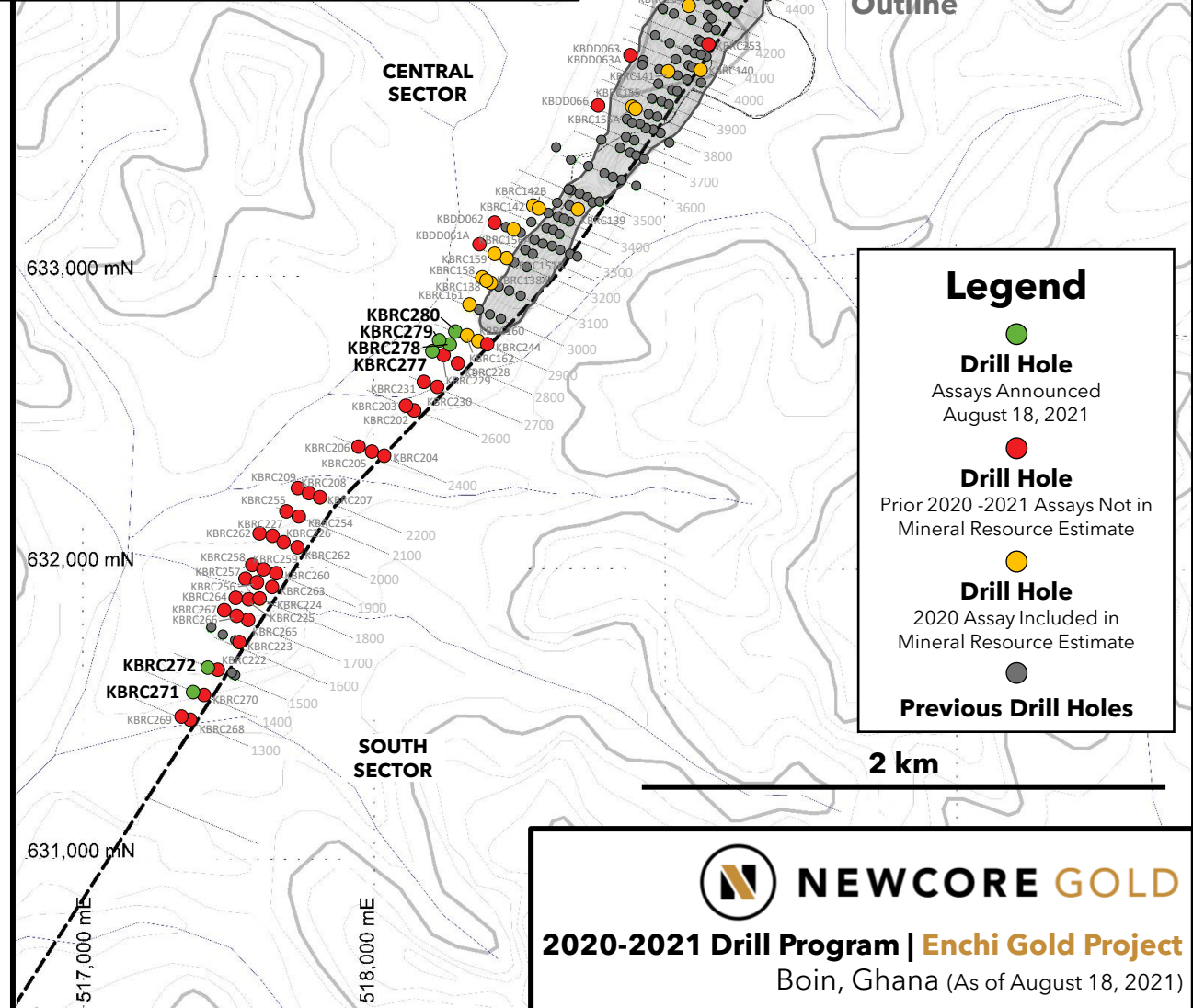
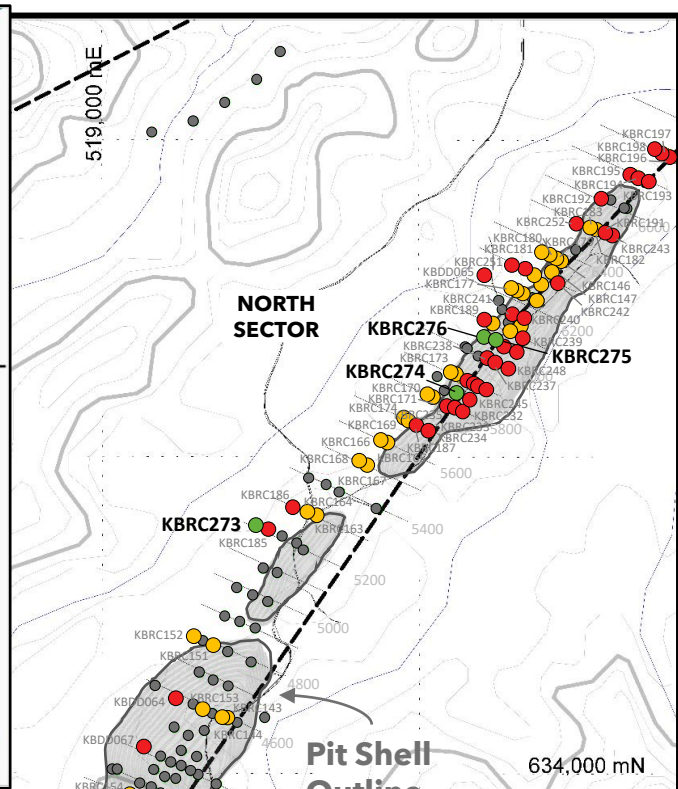
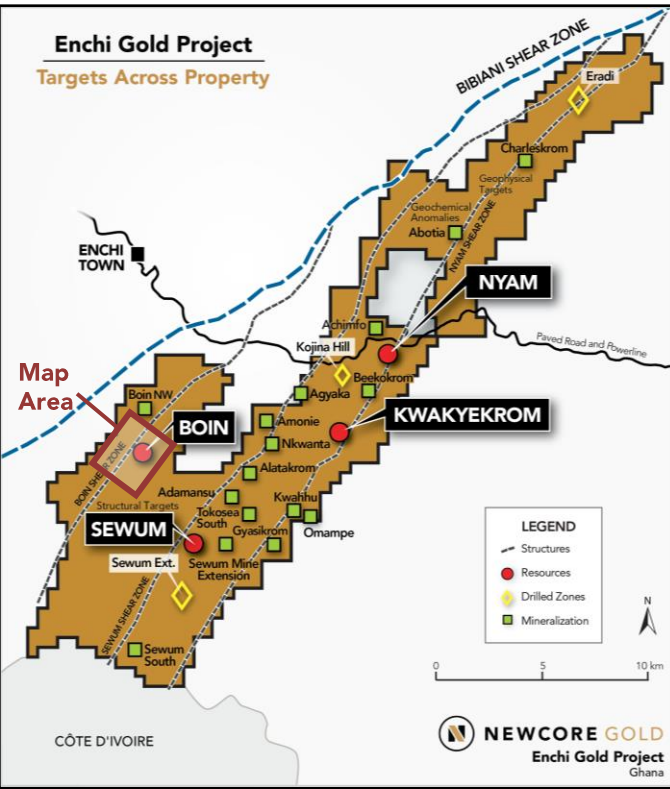
NEWCORE GOLD

2020-2021 Drill Program
Enchi Gold Project, Ghana (As of December 2021)

Enchi Gold Project
Targets Across Property

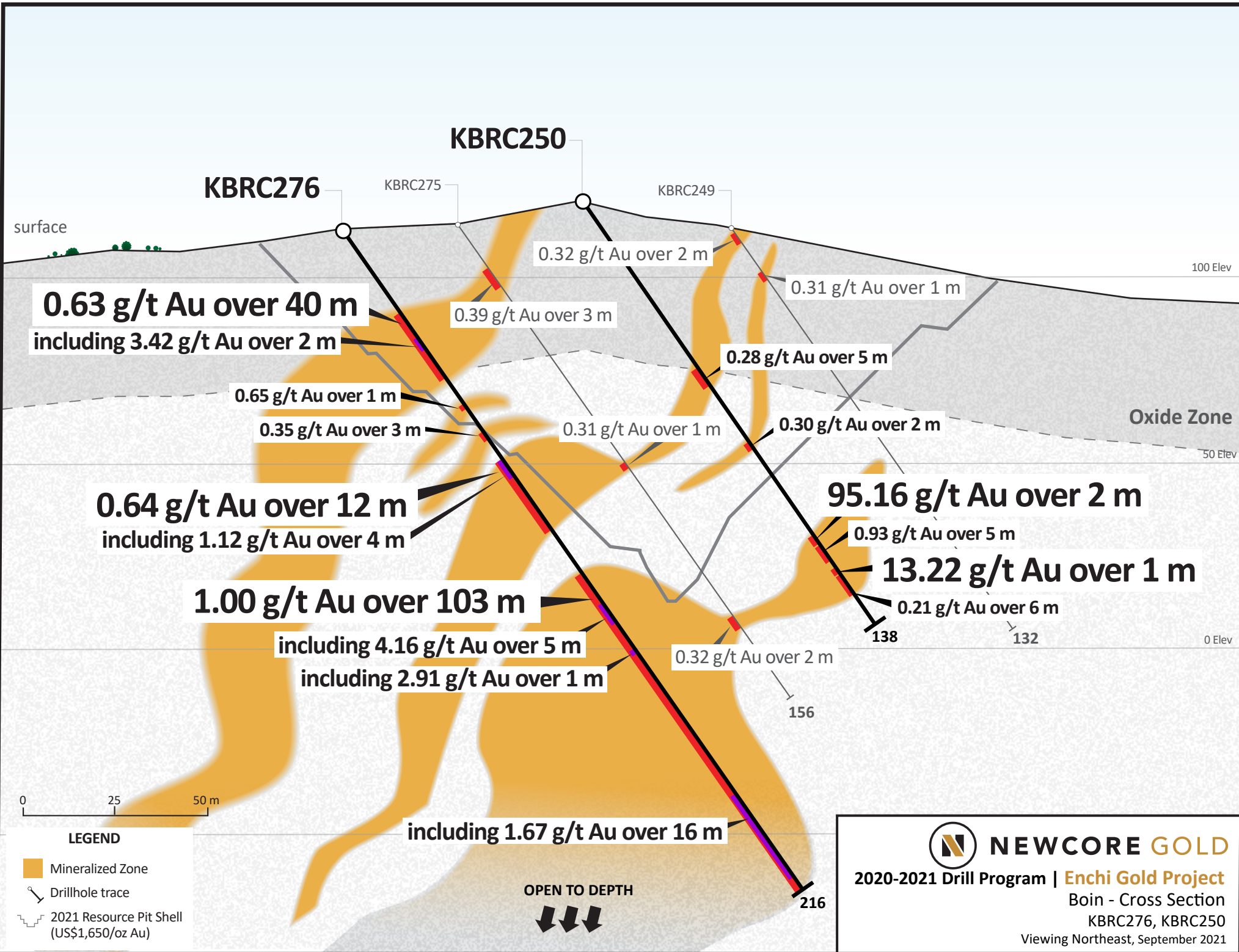


Enchi Gold Project
Targets Across Property

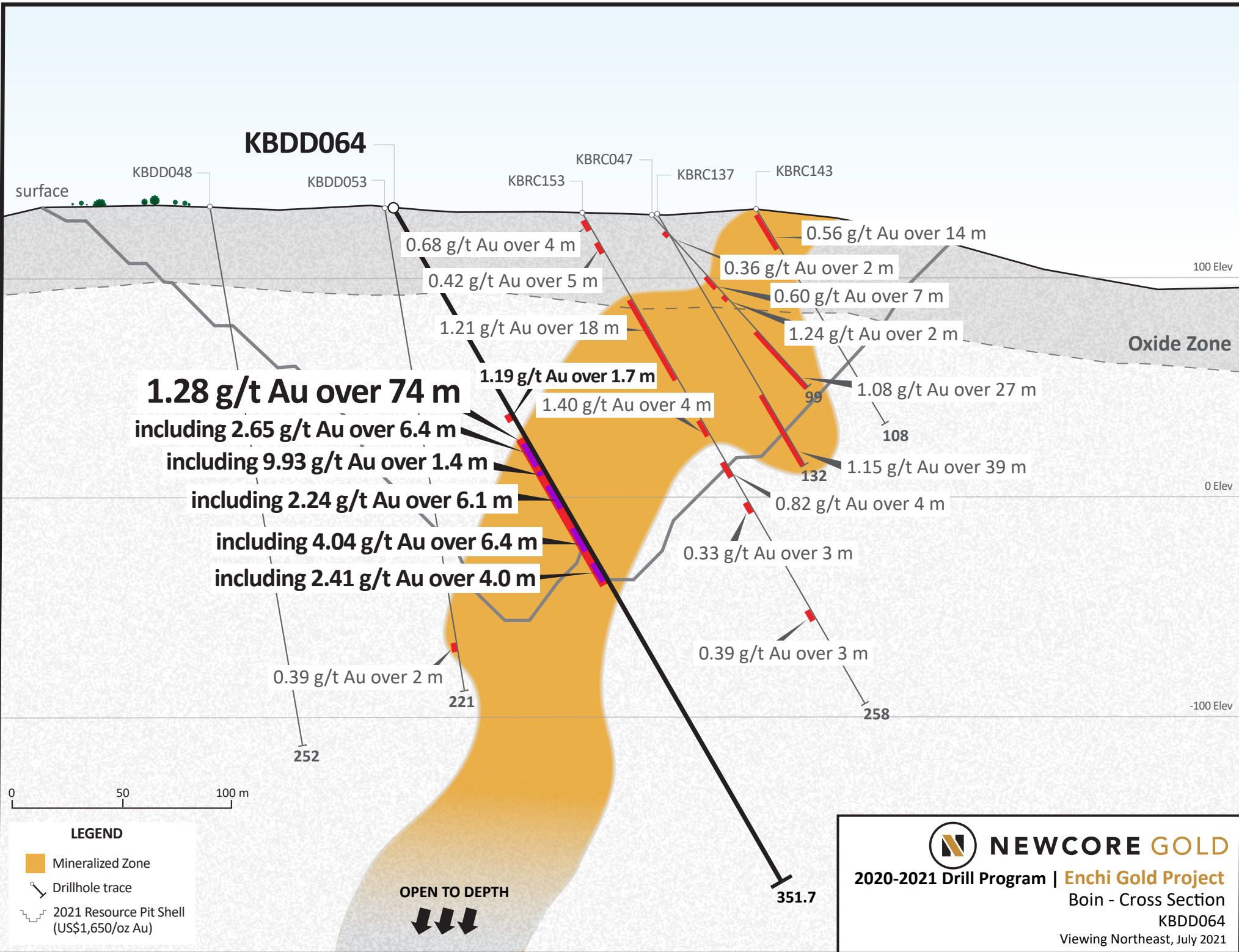


Legend

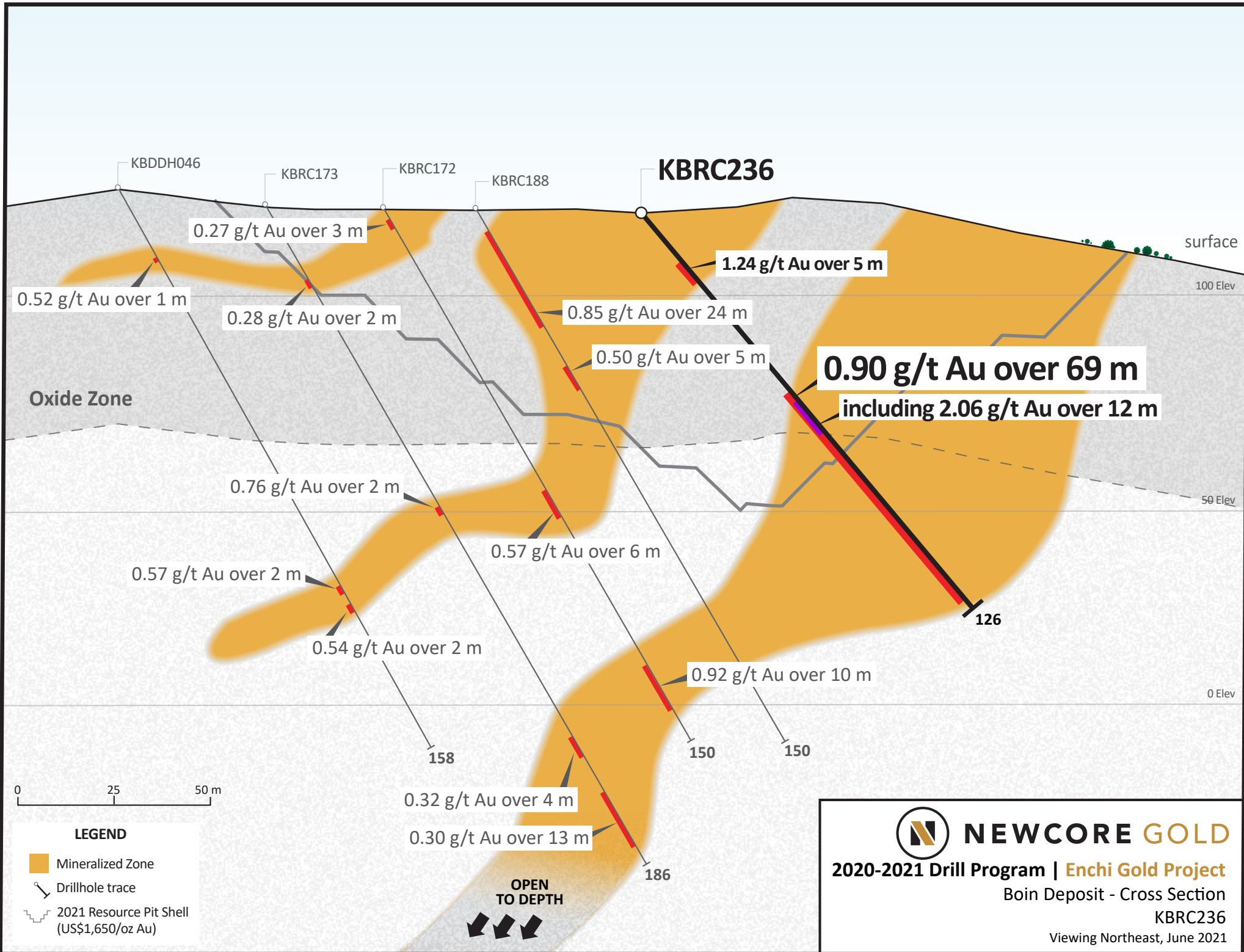
- Drill Hole
Assays Announced
August 18, 2021
- Drill Hole
Prior 2020 -2021 Assays Not in
Mineral Resource Estimate
- Drill Hole
2020 Assay Included in
Mineral Resource Estimate
- Previous Drill Holes



*Please refer to news release dated July 21, 2021 and August 18, 2021 for further details, available on Newcore Gold's website (newcoregold.com) and SEDAR (www.sedar.com)



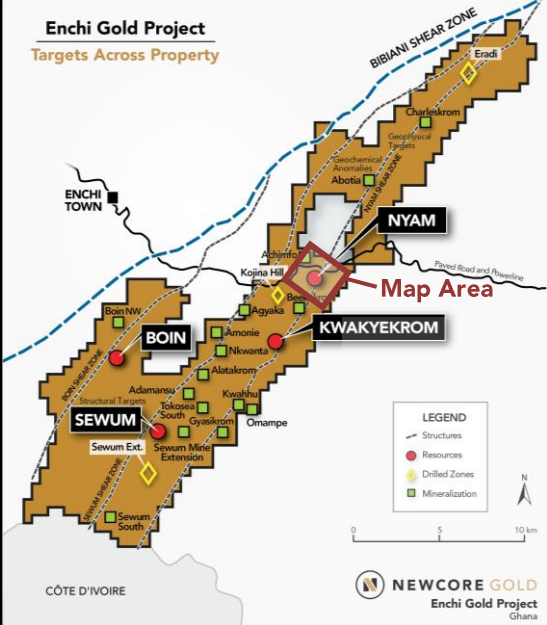
*Please refer to news release dated July 21, 2021 for further details, available on Newcore Gold's website (newcoregold.com) and SEDAR (www.sedar.com)



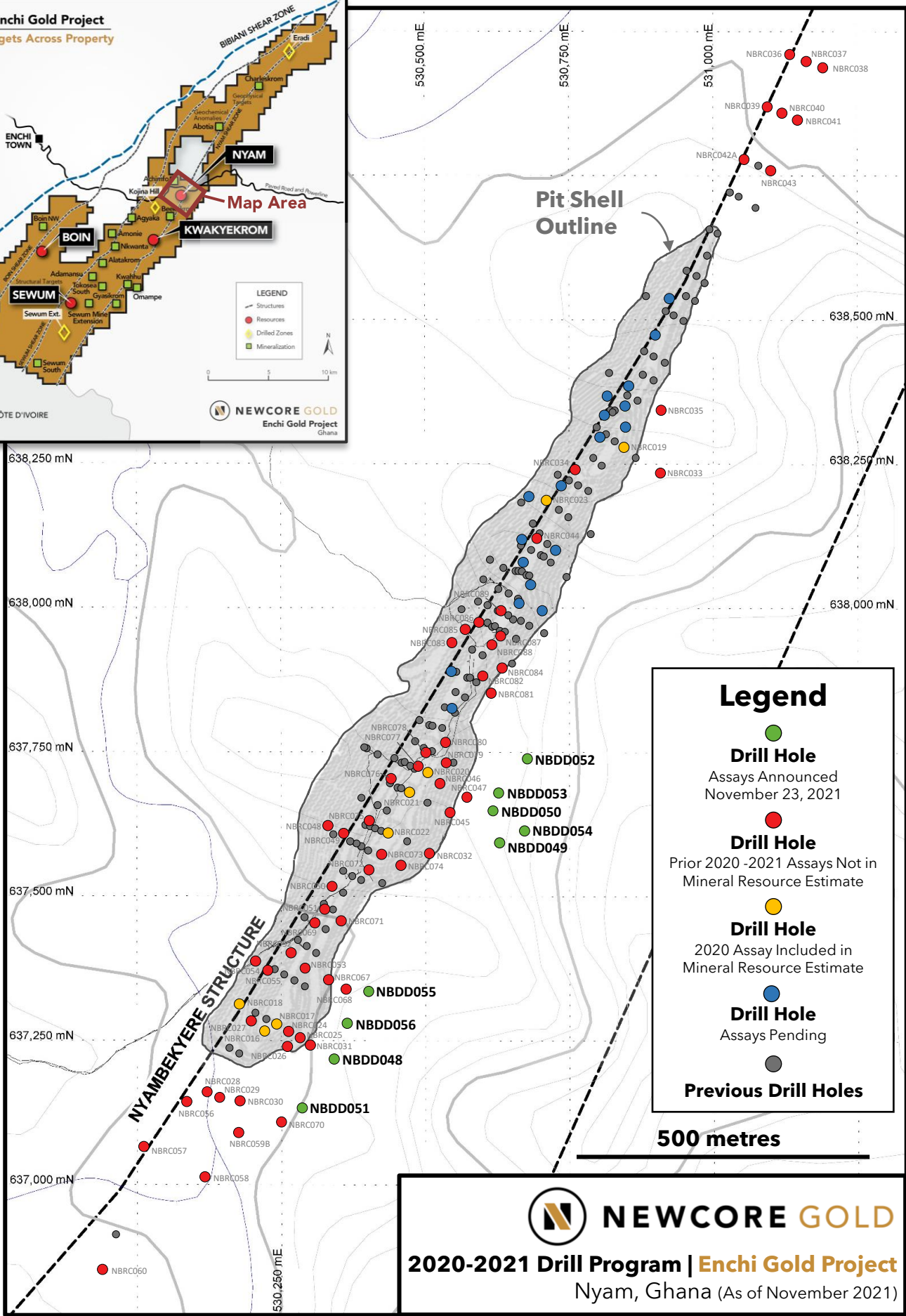
*Please refer to news release dated June 1, 2021 for further details, available on Newcore Gold's website (newcoregold.com) and SEDAR (www.sedar.com)

Enchi Gold Project

Targets Across Property



NEWCORE GOLD
Enchi Gold Project
Ghana



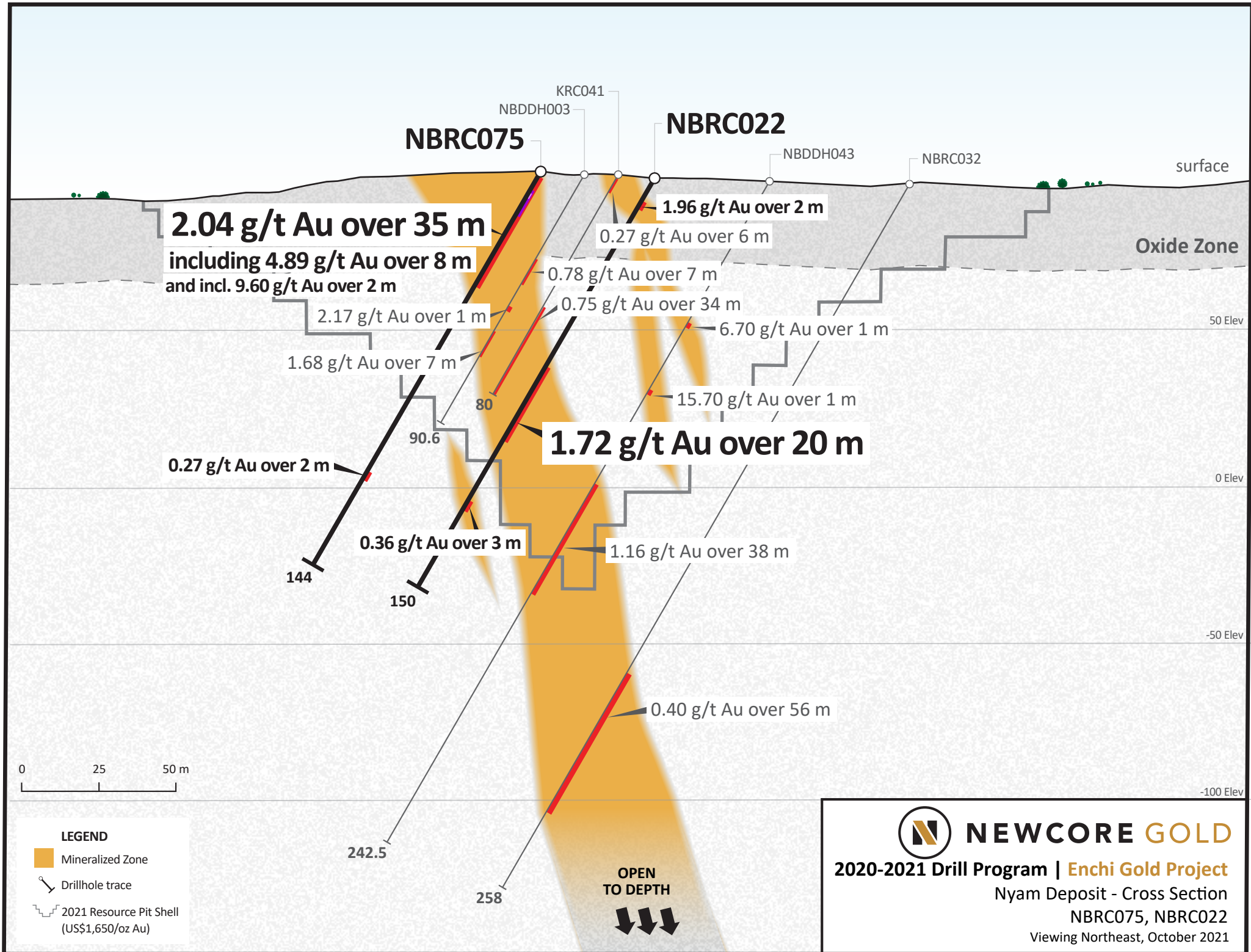
Legend

- **Drill Hole**
Assays Announced
November 23, 2021
- **Drill Hole**
Prior 2020 -2021 Assays Not in
Mineral Resource Estimate
- **Drill Hole**
2020 Assay Included in
Mineral Resource Estimate
- **Drill Hole**
Assays Pending
- **Previous Drill Holes**

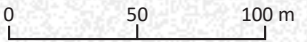
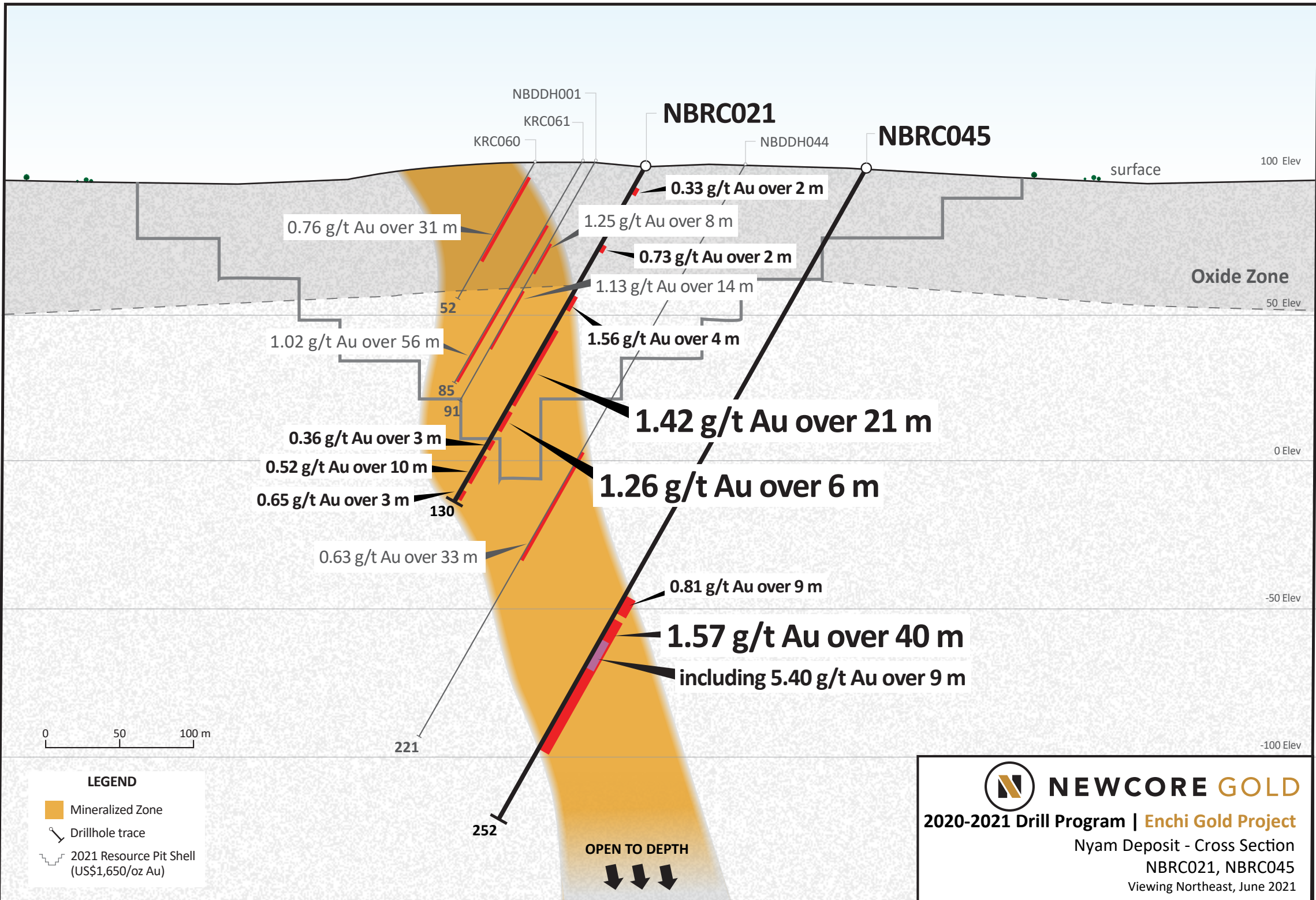
500 metres

NEWCORE GOLD

2020-2021 Drill Program | Enchi Gold Project
Nyam, Ghana (As of November 2021)



*Please refer to news release dated October 26, 2021 and November 26, 2020 for further details, available on Newcore Gold's website (newcoregold.com) and SEDAR (www.sedar.com)



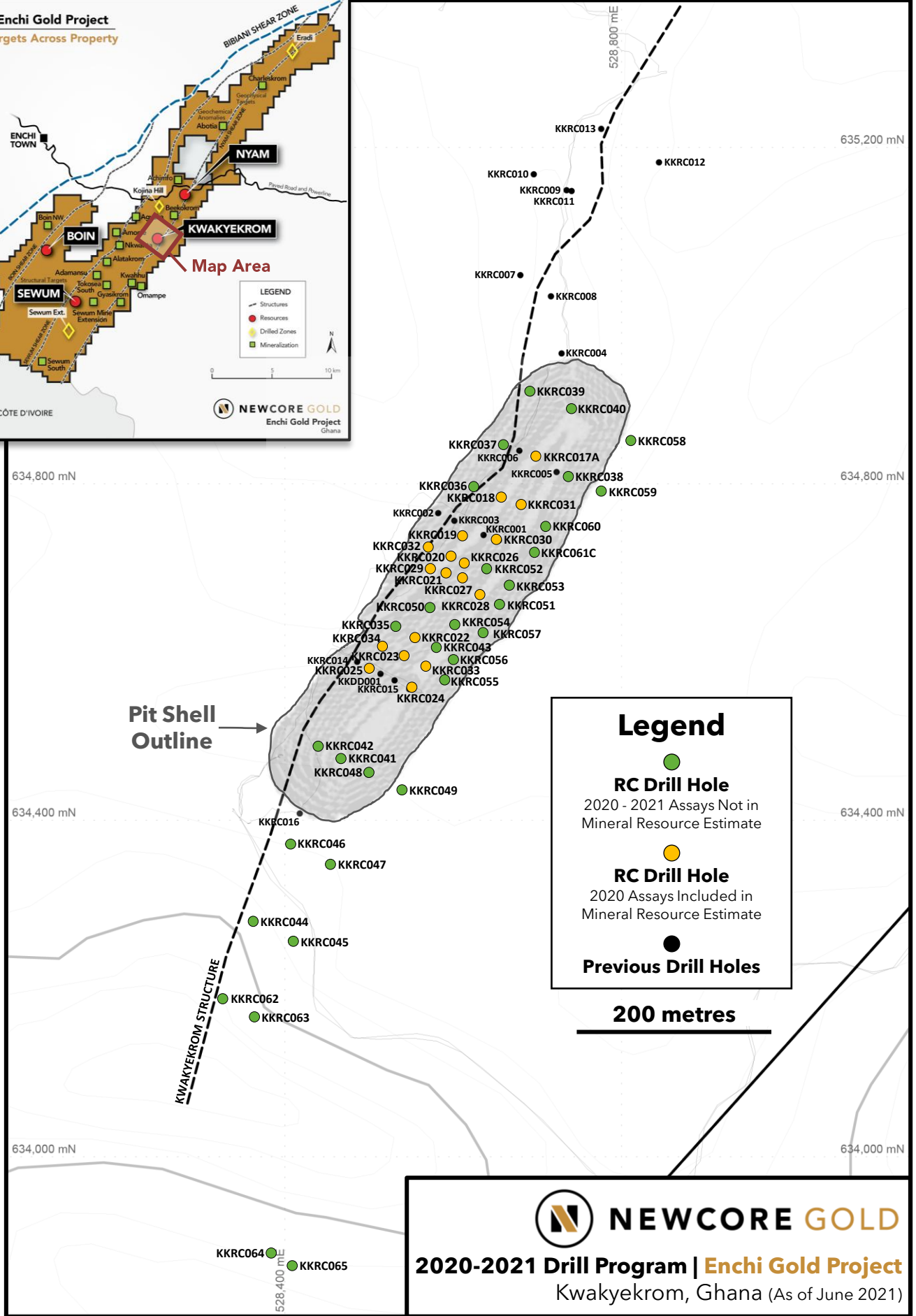
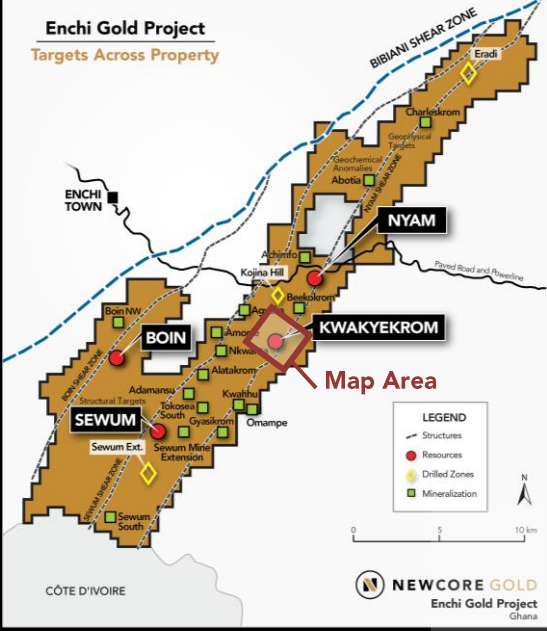
LEGEND

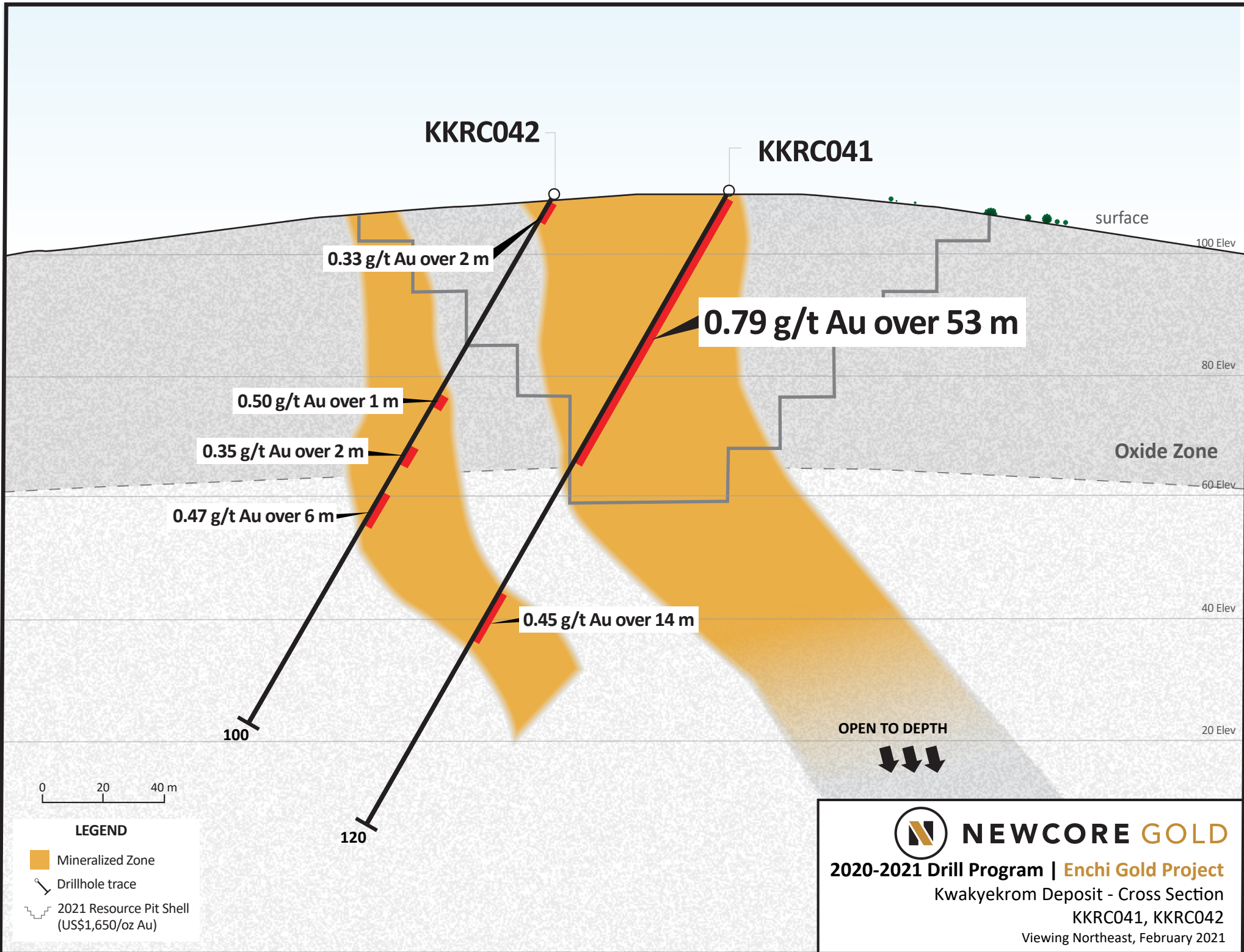
- Mineralized Zone
- Drillhole trace
- 2021 Resource Pit Shell (US\$1,650/oz Au)

NEWCORE GOLD
 2020-2021 Drill Program | Enchi Gold Project
 Nyam Deposit - Cross Section
 NBRC021, NBRC045
 Viewing Northeast, June 2021

*Please refer to news release dated November 26, 2020 and March 22, 2021 for further details, available on Newcore Gold's website (newcoregold.com) and SEDAR (www.sedar.com)

Enchi Gold Project
Targets Across Property





*Please refer to news release dated February 17, 2021 for further details, available on Newcore Gold's website (newcoregold.com) and SEDAR (www.sedar.com)

Newcore Gold Ltd. | Enchi Gold Project

2020 - 2021 Drill Results

Table accompanies news release dated December 15, 2021



Previously Released Drill Results

Hole ID	Zone/Deposit	From (m)	To (m)	Length (m)	Au (g/t)	UTM East	UTM North	Elevation	Azimuth °	Dip °	Hole Length (m)
KBRC138	Boin	92.0	96.0	4.0	1.05	518408	632972	147	114	-60	97
KBRC138A	Boin	133.0	135.0	2.0	0.57	518405	632976	147	114	-60	216
and		146.0	148.0	2.0	0.65						
KBRC139	Boin	1.0	17.0	16.0	0.69	518700	633234	130	120	-60	80
KBRC140	Boin	4.0	7.0	3.0	0.31	519121	633708	155	120	-60	80
and		13.0	14.0	1.0	0.44						
KBRC141	Boin	10.0	21.0	11.0	0.34	519018	633704	156	114	-50	120
and		48.0	95.0	47.0	1.67						
including		49.0	58.0	9.0	2.96						
and incl.		75.0	85.0	10.0	3.63						
KBRC142	Boin	1.0	4.0	3.0	0.27	518558	633239	129	114	-50	156
and		131.0	150.0	19.0	0.43						
including		131.0	142.0	11.0	0.60						
KBRC142B	Boin	121.0	130.0	9.0	0.30	518573	633233	137	114	-50	238
KBRC143	Boin	3.0	17.0	14.0	0.56	519395	634172	120	114	-60	108
KBRC144	Boin	146.0	148.0	2.0	0.51	519378	634178	120	120	-60	150
KBRC145	Boin	48.0	55.0	7.0	0.54	520325	635410	117	120	-60	150
KBRC146	Boin	7.0	10.0	3.0	0.24	520456	635619	124	114	-50	100
and		30.0	62.0	32.0	0.92						
including		42.0	54.0	12.0	1.78						
and incl.		59.0	61.0	2.0	0.52						
KBRC147	Boin	50.0	59.0	9.0	0.52	520424	635582	124	114	-50	102
KBRC148	Boin	56.0	58.0	2.0	0.69	520391	635546	122	114	-50	108
and		75.0	77.0	2.0	0.30						

Newcore Gold Ltd. | Enchi Gold Project

2020 - 2021 Drill Results

Table accompanies news release dated December 15, 2021



Hole ID	Zone/Deposit	From (m)	To (m)	Length (m)	Au (g/t)	UTM East	UTM North	Elevation	Azimuth °	Dip °	Hole Length (m)
KBRC149	Boin	38.0	41.0	3.0	0.36	520378	635496	120	114	-50	100
KBRC150	Boin	59.0	94.0	35.0	0.57	520335	635517	125	114	-65	148
including		65.0	91.0	26.0	0.70						
and		130.0	135.0	5.0	0.59						
and		141.0	148.0	7.0	0.42						
KBRC150A	Boin	72.0	74.0	2.0	0.59	520338	635514	122	114	-65	174
and		87.0	108.0	21.0	1.19						
and		136.0	139.0	3.0	1.01						
and		145.0	162.0	17.0	0.44						
KBRC151	Boin	9.0	20.0	11.0	2.30	519349	634402	131	120	-60	156
and		62.0	65.0	3.0	0.63						
and		136.0	144.0	8.0	0.55						
KBRC152	Boin	73.0	74.0	1.0	1.20	519292	634429	117	120	-60	258
and		209.0	213.0	4.0	1.56						
and		234.0	235.0	1.0	2.55						
KBRC153	Boin	7.0	11.0	4.0	0.68	519317	634201	122	120	-60	258
and		28.0	33.0	5.0	0.42						
and		42.0	60.0	18.0	1.21						
and		67.0	71.0	4.0	1.40						
and		110.0	114.0	4.0	0.82						
and		155.0	158.0	3.0	0.33						
and		191.0	194.0	3.0	0.39						
KBRC154	Boin	88.0	95.0	7.0	0.61	519086	633928	157	120	-60	178
and		149.0	152.0	3.0	0.27						
KBRC155	Boin	85.0	89.0	4.0	0.22	518896	633582	155	120	-60	138
and		103.0	105.0	2.0	0.89						
and		118.0	134.0	16.0	0.57						

Newcore Gold Ltd. | Enchi Gold Project

2020 - 2021 Drill Results

Table accompanies news release dated December 15, 2021



Hole ID	Zone/Deposit	From (m)	To (m)	Length (m)	Au (g/t)	UTM East	UTM North	Elevation	Azimuth °	Dip °	Hole Length (m)
KBRC155A	Boin	95.0	97.0	2.0	0.68	518900	633578	163	120	-60	204
and		110.0	113.0	3.0	0.64						
and		127.0	135.0	8.0	0.37						
KBRC156A	Boin	156.0	174.0	18.0	0.69	518480	633164	130	114	-55	270
and		187.0	191.0	4.0	1.20						
KBRC157B	Boin	150.0	162.0	12.0	0.70	518457	633065	128	114	-65	180
KBRC158	Boin	77.0	91.0	14.0	1.41	518379	632992	126	114	-60	260
KBRC159	Boin	178.0	240.0	62.0	0.73	518423	633075	127	114	-65	240
including		187.0	206.0	19.0	1.76						
and incl.		199.0	206.0	7.0	3.18						
KBRC160	Boin		no significant results			518358	632778	124	114	-60	120
KBRC161	Boin	124.0	126.0	2.0	0.37	518330	632898	128	114	-55	200
and		144.0	151.0	7.0	0.36						
and		163.0	166.0	3.0	0.31						
KBRC162	Boin	65.0	69.0	4.0	0.53	518321	632793	120	114	-60	156
and		88.0	91.0	3.0	0.68						
and		101.0	107.0	6.0	1.67						
KBRC163	Boin	11.0	14.0	3.0	0.34	519678	634811	141	114	-60	102
and		27.0	54.0	27.0	1.27						
KBRC164	Boin	19.0	25.0	6.0	1.23	519649	634822	164	114	-60	144
and		102.0	114.0	12.0	0.69						
and		128.0	132.0	4.0	0.47						
KBRC165	Boin	78.0	80.0	2.0	0.41	519895	635045	120	114	-60	102
KBRC166	Boin		no significant results			519886	635049	126	114	-60	140
KBRC167	Boin		no significant results			519836	634974	123	114	-60	120
KBRC168	Boin	1.0	6.0	5.0	0.56	519816	634986	121	114	-60	140

Newcore Gold Ltd. | Enchi Gold Project

2020 - 2021 Drill Results

Table accompanies news release dated December 15, 2021



Hole ID	Zone/Deposit	From (m)	To (m)	Length (m)	Au (g/t)	UTM East	UTM North	Elevation	Azimuth °	Dip °	Hole Length (m)
KBRC169	Boin	55.0	69.0	14.0	1.41	519973	635110	128	114	-60	138
including		62.0	68.0	6.0	2.86						
and		84.0	86.0	2.0	0.53						
and		90.0	92.0	2.0	0.53						
and		125.0	131.0	6.0	0.31						
KBRC170	Boin	45.0	49.0	4.0	0.31	520050	635185	141	114	-60	156
and		70.0	72.0	2.0	0.49						
KBRC171	Boin	77.0	78.0	1.0	1.07	520030	635195	129	114	-60	150
and		119.0	129.0	10.0	0.44						
KBRC172	Boin	2.0	5.0	3.0	0.27	520131	635252	125	114	-60	150
and		78.0	84.0	6.0	0.57						
and		128.0	138.0	10.0	0.92						
KBRC173	Boin	20.0	22.0	2.0	0.28	520105	635265	126	114	-60	186
and		85.0	87.0	2.0	0.76						
and		154.0	158.0	4.0	0.32						
and		166.0	179.0	13.0	0.30						
KBRC174	Boin	91.0	93.0	2.0	0.41	519957	635121	130	114	-60	162
and		153.0	154.0	1.0	0.76						
KBRC175	Boin	67.0	89.0	22.0	0.65	520291	635396	119	114	-60	150
KBRC176	Boin	70.0	77.0	7.0	0.39	520369	635575	130	114	-60	182
and		95.0	105.0	10.0	0.64						
and		130.0	140.0	10.0	0.44						
KBRC177	Boin	81.0	84.0	2.0	0.47	520320	635523	123	114	-65	228
and		108.0	109.0	1.0	0.46						
and		116.0	120.0	4.0	0.81						
and		204.0	206.0	2.0	1.39						
KBRC178	Boin	134.0	140.0	6.0	0.57	520297	635532	117	114	-65	220
		147.0	149.0	2.0	0.90						

Newcore Gold Ltd. | Enchi Gold Project

2020 - 2021 Drill Results

Table accompanies news release dated December 15, 2021



Hole ID	Zone/Deposit	From (m)	To (m)	Length (m)	Au (g/t)	UTM East	UTM North	Elevation	Azimuth °	Dip °	Hole Length (m)
KBRC179	Boin	92.0	97.0	5.0	0.56	520436	635631	133	114	-50	150
KBRC180	Boin	108.0	110.0	2.0	0.33	520415	635637	134	114	-55	170
and		126.0	129.0	3.0	0.47						
KBRC181	Boin	127.0	138.0	11.0	0.45	520393	635648	138	114	-60	216
and		142.0	145.0	3.0	0.29						
and		155.0	162.0	7.0	1.05						
KBRC182	Boin	64.0	68.0	4.0	0.35	520570	635717	137	114	-60	108
and		78.0	82.0	4.0	0.68						
and		87.0	91.0	4.0	0.70						
KBRC183	Boin	93.0	96.0	3.0	0.49	520544	635724	131	114	-60	144
and		105.0	121.0	16.0	0.30						
KBRC184	Boin	86.0	88.0	2.0	0.44	520234	635422	114	114	-60	216
and		102.0	111.0	9.0	0.82						
and		125.0	128.0	3.0	0.45						
and		145.0	166.0	21.0	0.94						
KBRC185	Boin	114.0	116.0	2.0	1.42	530284	634768	135	114	-50	204
and		137.0	204.0	67.0	0.85						
including		137.0	146.0	9.0	2.95						
KBRC186	Boin	102.0	103.0	1.0	0.30	530262	634841	146	114	-60	200
and		138.0	142.0	4.0	0.54						
and		166.0	169.0	3.0	0.32						
KBRC187	Boin	0.0	1.0	1.0	0.56	530200	635099	137	114	-60	132
and		7.0	9.0	2.0	0.30						
and		22.0	24.0	2.0	1.19						
and		102.0	106.0	4.0	0.40						
KBRC188	Boin	6.0	30.0	24.0	0.85	530122	635241	129	114	-60	150
and		46.0	51.0	5.0	0.50						

Newcore Gold Ltd. | Enchi Gold Project

2020 - 2021 Drill Results

Table accompanies news release dated December 15, 2021



Hole ID	Zone/Deposit	From (m)	To (m)	Length (m)	Au (g/t)	UTM East	UTM North	Elevation	Azimuth °	Dip °	Hole Length (m)
KBRC189	Boin	86.0	88.0	2.0	0.37	530142	635433	111	114	-60	200
and		92.0	94.0	2.0	0.51						
and		101.0	103.0	2.0	0.57						
and		121.0	123.0	2.0	0.41						
and		126.0	127.0	1.0	0.78						
and		140.0	142.0	2.0	0.37						
and		148.0	150.0	2.0	0.48						
KBRC190	Boin	103.0	111.0	8.0	0.61	530180	635591	128	114	-60	200
and		119.0	155.0	36.0	1.14						
including		124.0	142.0	18.0	1.72						
KBRC191	Boin	1.0	3.0	2.0	0.48	530297	635707	129	114	-60	100
KBRC192	Boin	116.0	118.0	2.0	0.36	530507	635817	145	114	-60	150
and		124.0	125.0	1.0	0.30						
KBRC193	Boin		no significant results			530909	635870	125	114	-50	100
KBRC194	Boin	4.0	6.0	2.0	0.31	530760	635882	119	114	-60	160
and		12.0	13.0	1.0	0.50						
and		17.0	19.0	2.0	0.46						
and		25.0	26.0	1.0	0.36						
and		102.0	103.0	1.0	0.86						
KBRC195	Boin	111.0	113.0	2.0	0.31	530910	635894	124	114	-70	208
and		145.0	146.0	1.0	0.37						
and		163.0	164.0	1.0	0.58						
KBRC196	Boin		no significant results			531135	635948	114	114	-50	100
KBRC197	Bon	21.0	23.0	2.0	0.54	531161	635960	108	114	-60	150
and		28.0	29.0	1.0	0.32						

Newcore Gold Ltd. | Enchi Gold Project

2020 - 2021 Drill Results

Table accompanies news release dated December 15, 2021



Hole ID	Zone/Deposit	From (m)	To (m)	Length (m)	Au (g/t)	UTM East	UTM North	Elevation	Azimuth °	Dip °	Hole Length (m)
KBRC198	Boin	4.0	8.0	4.0	0.39	531190	635967	107	114	-70	204
and		29.0	32.0	3.0	0.43						
and		36.0	40.0	4.0	0.34						
and		97.0	99.0	2.0	0.39						
and		193.0	194.0	1.0	0.35						
KBRC199	Boin	41.0	46.0	5.0	0.41	531096	636032	112	114	-50	108
KBRC200	Boin	59.0	62.0	3.0	0.67	531120	636055	113	114	-70	200
KBRC201	Boin	84.0	86.0	2.0	0.26	520881	636042	111	114	-60	180
KBRC202	Boin	7.0	8.0	1.0	0.32	518142	632540	136	114	-60	102
KBRC203	Boin	59.0	61.0	2.0	0.29	518113	632554	129	114	-60	150
and		130.0	133.0	3.0	0.32						
KBRC204	Boin	51.0	53.0	2.0	0.26	518036	632382	121	114	-60	102
KBRC205	Boin	12.0	27.0	15.0	0.53	517993	632397	131	114	-60	132
including		13.0	16.0	3.0	1.81						
and		30.0	33.0	3.0	0.31						
and		80.0	82.0	2.0	0.48						
KBRC206	Boin	67.0	69.0	2.0	2.31	517951	632416	125	114	-60	168
KBRC207	Boin	12.0	14.0	2.0	0.32	517815	632238	120	114	-60	108
and		44.0	46.0	2.0	0.40						
KBRC208	Boin	51.0	53.0	2.0	0.30	517778	632254	115	114	-60	105
and		78.0	80.0	2.0	0.21						
and		88.0	89.0	1.0	0.33						
KBRC209	Boin	87.0	90.0	3.0	0.19	517741	632271	115	114	-60	156
KBRC210A	Boin		no significant results			522086	637066	98	114	-60	109
KBRC211	Boin		no significant results			522026	637096	101	114	-60	150
KBRC212	Boin		no significant results			521954	637125	99	114	-60	200
KBRC213	Boin		no significant results			521852	636897	105	114	-60	108
KBRC214	Boin		no significant results			521774	636929	100	114	-60	156

Newcore Gold Ltd. | Enchi Gold Project

2020 - 2021 Drill Results

Table accompanies news release dated December 15, 2021



Hole ID	Zone/Deposit	From (m)	To (m)	Length (m)	Au (g/t)	UTM East	UTM North	Elevation	Azimuth °	Dip °	Hole Length (m)
KBRC215	Boin	89.0	90.0	1.0	0.21	521707	636961	104	114	-60	213
KBRC216	Boin		no significant results			521425	636580	116	114	-60	108
KBRC217	Boin		no significant results			521370	636604	108	114	-60	150
KBRC218	Boin		no significant results			521309	636633	100	114	-60	200
KBRC219	Boin		no significant results			521141	636272	107	114	-60	100
KBRC220	Boin	114.0	116.0	2.0	0.28	521096	636295	107	114	-60	150
KBRC221	Boin		no significant results			521053	636315	107	114	-60	216
KBRC222	Boin	23.0	26.0	3.0	0.40	517464	631646	136	114	-60	120
and		34.0	41.0	7.0	0.45						
and		48.0	53.0	5.0	0.33						
and		59.0	61.0	2.0	0.67						
KBRC223	Boin	75.0	79.0	4.0	0.29	517535	631739	140	114	-60	132
KBRC224	Boin	3.0	4.0	1.0	0.94	517608	631888	113	114	-60	100
and		41.0	42.0	1.0	1.16						
KBRC225	Boin	23.0	25.0	2.0	1.51	517571	631888	118	114	-60	100
and		38.0	40.0	2.0	0.31						
and		70.0	109.0	39.0	0.67						
including		95.0	103.0	8.0	1.60						
KBRC226	Boin	91.0	92.0	1.0	0.63	517690	632085	122	114	-60	100
KBRC227	Boin	84.0	86.0	2.0	0.37	517653	632106	116	114	-60	150
and		95.0	104.0	9.0	0.35						
including		95.0	97.0	2.0	0.69						
KBRC228	Boin	36.0	38.0	2.0	0.33	518290	632705	125	114	-60	100
and		50.0	51.0	1.0	0.40						
and		78.0	84.0	6.0	0.29						
KBRC229	Boin	118.0	133.0	15.0	0.73	518240	632729	127	114	-60	150
KBRC230	Boin		no significant results			518218	632621	126	114	-60	107

Newcore Gold Ltd. | Enchi Gold Project

2020 - 2021 Drill Results

Table accompanies news release dated December 15, 2021



Hole ID	Zone/Deposit	From (m)	To (m)	Length (m)	Au (g/t)	UTM East	UTM North	Elevation	Azimuth °	Dip °	Hole Length (m)
KBRC231	Boin	52.0	54.0	2.0	0.33	518175	632636	120	114	-60	150
and		56.0	57.0	1.0	0.32						
and		103.0	104.0	1.0	0.33						
KBRC232	Boin	8.0	12.0	4.0	0.36	520142	635142	138	114	-60	84
KBRC233	Boin	21.0	27.0	6.0	0.29	520119	635156	135	114	-60	126
and		39.0	43.0	4.0	3.50						
and		63.0	64.0	1.0	0.45						
and		67.0	68.0	1.0	0.31						
KBRC234	Boin	64.0	71.0	7.0	1.25	520035	635082	121	114	-60	114
KBRC235	Boin	40.0	43.0	3.0	1.45	520092	635164	134	114	-60	136
and		55.0	59.0	4.0	1.29						
and		91.0	92.0	1.0	0.46						
and		103.0	107.0	4.0	0.39						
and		123.0	125.0	2.0	0.34						
KBRC236	Boin	13.0	18.0	5.0	1.24	520187	635223	125	114	-60	126
and		55.0	124.0	69.0	0.90						
including		61.0	73.0	12.0	2.06						
KBRC237	Boin	24.0	26.0	2.0	0.59	520246	635295	118	114	-60	100
and		52.0	56.0	4.0	0.46						
KBRC238	Boin	44.0	45.0	1.0	0.46	520218	635313	112	114	-60	150
and		118.0	120.0	2.0	0.41						
KBRC239	Boin	6.0	7.0	1.0	0.37	520333	635374	114	114	-60	100
and		91.0	92.0	1.0	0.71						
KBRC240	Boin	48.0	51.0	3.0	0.69	520334	635433	110	114	-60	100
and		57.0	59.0	2.0	0.28						
and		72.0	73.0	1.0	0.63						

Newcore Gold Ltd. | Enchi Gold Project

2020 - 2021 Drill Results

Table accompanies news release dated December 15, 2021



Hole ID	Zone/Deposit	From (m)	To (m)	Length (m)	Au (g/t)	UTM East	UTM North	Elevation	Azimuth °	Dip °	Hole Length (m)
KBRC241	Boin	18.0	26.0	8.0	0.45	520300	635447	129	114	-60	150
and		34.0	43.0	9.0	1.75						
and		62.0	65.0	3.0	1.36						
and		76.0	112.0	36.0	1.02						
including		95.0	102.0	7.0	2.58						
KBRC242	Boin	6.0	8.0	2.0	0.57	520443	635548	121	114	-60	100
KBRC243	Boin		no significant results			520612	635700	129	114	-60	100
KBRC244	Boin	0.0	1.0	1.0	0.48	518380	632770	126	114	-60	102
and		4.0	11.0	7.0	0.68						
KBRC245	Boin	126.0	132.0	6.0	0.56	520161	635179	94	114	-55	132
KBRC246	Boin	2.0	12.0	10.0	0.74	520216	635206	116	114	-50	108
KBRC247	Boin	9.0	16.0	7.0	0.45	520187	635223	123	114	-65	186
and		70.0	74.0	4.0	0.50						
and		102.0	105.0	3.0	0.56						
KBRC248	Boin	1.0	6.0	5.0	0.45	520285	635280	115	114	-55	156
and		29.0	31.0	2.0	0.25						
KBRC249	Boin	1.0	3.0	2.0	0.32	520309	635327	113	114	-55	132
and		14.0	15.0	1.0	0.31						
KBRC250	Boin	54.0	59.0	5.0	0.28	520273	635345	119	114	-55	138
and		79.0	81.0	2.0	0.30						
and		109.0	111.0	2.0	95.16						
and		111.0	116.0	5.0	0.93						
and		120.0	121.0	1.0	13.22						
and		121.0	127.0	6.0	0.21						
KBRC251	Boin	182.0	187.0	5.0	0.20	520302	635603	130	114	-60	240
KBRC252	Boin	134.0	135.0	1.0	1.86	520512	635737	144	114	-60	207
KBRC253	Boin	17.0	19.0	2.0	0.33	519153	633798	114	114	-60	114
and		24.0	31.0	7.0	0.99						

Newcore Gold Ltd. | Enchi Gold Project

2020 - 2021 Drill Results

Table accompanies news release dated December 15, 2021



Hole ID	Zone/Deposit	From (m)	To (m)	Length (m)	Au (g/t)	UTM East	UTM North	Elevation	Azimuth °	Dip °	Hole Length (m)
KBRC254	Boin	57.0	59.0	2.0	0.30	517736	632173	112	114	-50	102
KBRC255	Boin	143.0	145.0	2.0	0.39	517700	632187	113	114	-50	152
KBRC256	Boin	39.0	47.0	8.0	0.68	517597	631947	124	114	-55	150
and		51.0	53.0	2.0	0.27						
and		63.0	76.0	13.0	0.48						
and		118.0	119.0	1.0	0.36						
and		126.0	139.0	13.0	0.21						
KBRC257	Boin	42.0	44.0	2.0	0.43	517565	631962	114	114	-55	201
and		52.0	81.0	29.0	0.50						
and		188.0	201.0	13.0	0.45						
KBRC258	Boin	49.0	52.0	3.0	0.86	517585	632005	112	114	-50	150
and		62.0	65.0	3.0	0.50						
and		85.0	91.0	6.0	0.78						
and		107.0	114.0	7.0	0.27						
and		139.0	143.0	4.0	0.39						
KBRC259	Boin	56.0	62.0	6.0	0.46	517742	632065	113	114	-50	124
KBRC260	Boin	39.0	41.0	2.0	0.35	517663	631979	110	114	-55	90
and		49.0	62.0	13.0	0.78						
KBRC261	Boin	101.0	103.0	2.0	0.31	517742	632065	113	114	-50	156
KBRC262	Boin		no significant results			517617	632116	104	114	-50	198
KBRC263	Boin	22.0	25.0	3.0	0.31	517653	631932	113	114	-55	108
and		45.0	46.0	1.0	0.51						

Newcore Gold Ltd. | Enchi Gold Project

2020 - 2021 Drill Results

Table accompanies news release dated December 15, 2021



Hole ID	Zone/Deposit	From (m)	To (m)	Length (m)	Au (g/t)	UTM East	UTM North	Elevation	Azimuth °	Dip °	Hole Length (m)
KBRC264	Boin	33.0	42.0	9.0	0.50	517530	631895	119	114	-50	236
and		63.0	64.0	1.0	0.53						
and		72.0	102.0	30.0	0.39						
and		142.0	144.0	2.0	0.32						
and		160.0	169.0	9.0	0.32						
and		177.0	230.0	53.0	0.51						
including		187.0	196.0	9.0	1.17						
and		234.0	236.0	2.0	0.43						
KBRC265	Boin	3.0	5.0	2.0	0.32	517569	631819	132	114	-50	108
and		23.0	24.0	1.0	0.88						
and		44.0	48.0	4.0	0.36						
and		69.0	78.0	9.0	1.55						
including		70.0	72.0	2.0	4.75						
KBRC266	Boin	14.0	22.0	8.0	1.12	517530	631833	131	114	-50	156
and		92.0	94.0	2.0	0.56						
KBRC267	Boin	45.0	49.0	4.0	0.30	517490	631848	125	114	-55	186
and		95.0	102.0	7.0	1.78						
KBRC268	Boin	45.0	46.0	1.0	0.84	517365	631470	110	114	-50	126
and		60.0	85.0	25.0	0.79						
and		94.0	96.0	2.0	0.29						
and		108.0	121.0	13.0	0.54						
KBRC269	Boin	128.0	130.0	2.0	0.50	517338	631490	109	114	-50	152
KBRC270	Boin	48.0	53.0	5.0	0.50	517413	631559	108	114	-50	120
and		78.0	80.0	2.0	0.41						
and		92.0	112.0	20.0	0.44						
KBDD061A	Boin	236.0	236.7	0.7	1.38	518372	633108	122	114	-65	360.9
KBDD062	Boin	303.0	304.1	1.1	0.24	518423	633182	127	114	-62	320.8

Newcore Gold Ltd. | Enchi Gold Project

2020 - 2021 Drill Results

Table accompanies news release dated December 15, 2021



Hole ID	Zone/Deposit	From (m)	To (m)	Length (m)	Au (g/t)	UTM East	UTM North	Elevation	Azimuth °	Dip °	Hole Length (m)
KBDD063A	Boin	207.5	210.0	2.5	0.30	518891	633759	155	114	-60	249.8
and		218.5	225.8	7.3	0.45						
and		243.0	244.2	1.2	1.09						
and		248.0	249.8	1.8	0.63						
KBRD063	Boin	198.4	201.3	2.9	0.69	518891	633759	155	114	-60	315.4
and		208.9	221.9	13.0	0.13						
and		252.3	254.4	2.1	2.72						
and		297.8	301.0	3.2	0.72						
KBDD064	Boin	107.3	109.0	1.7	1.19	519239	634235	130	114	-60	351.7
and		121.0	195.0	74.0	1.28						
including		122.0	128.4	6.4	2.65						
including		136.0	137.4	1.4	9.93						
including		149.3	155.4	6.1	2.24						
including		170.6	177.0	6.4	4.04						
including	189.0	193.0	4.0	2.41							
KBDD065	Boin	276.3	277.0	0.7	1.32	520215	635573	109	114	-57	330.3
and		296.0	297.8	1.8	6.14						
and		310.0	313.0	3.0	0.56						
KBDD066	Boin	222.0	247.0	25.0	1.08	518777	633586	146	114	-57	300.6
including		222.0	224.0	2.0	4.31						
including		232.9	237.5	4.6	2.06						
and		257.4	279.0	21.6	0.63						
including		259.0	260.8	1.8	2.04						
including	267.0	270.0	3.0	1.84							
KBDD067	Boin		no significant results			519130	634081	142	114	-57	300.4
KBRC271	Boin	10.0	12.0	2.0	0.34	517381	631566	110	114	-50	162
and		18.0	25.0	7.0	1.22						
and		77.0	110.0	33.0	0.47						
and		119.0	122.0	3.0	0.30						

Newcore Gold Ltd. | Enchi Gold Project

2020 - 2021 Drill Results

Table accompanies news release dated December 15, 2021



Hole ID	Zone/Deposit	From (m)	To (m)	Length (m)	Au (g/t)	UTM East	UTM North	Elevation	Azimuth °	Dip °	Hole Length (m)
KBRC272	Boin	90.0	94.0	4.0	0.40	517432	631655	126	114	-50	162
and		102.0	109.0	7.0	0.75						
KBRC273	Boin	152.0	155.0	3.0	1.63	519489	634780	132	114	-50	278
and		166.0	175.0	9.0	1.67						
and		183.0	192.0	9.0	1.57						
and		232.0	233.0	1.0	0.70						
KBRC274	Boin	12.0	13.0	1.0	0.41	520124	635198	127	114	-55	200
and		32.0	40.0	8.0	0.41						
and		60.0	63.0	3.0	0.82						
and		84.0	85.0	1.0	0.39						
KBRC275	Boin	16.0	19.0	3.0	0.39	520245	635365	116	114	-55	156
and		45.0	46.0	1.0	0.31						
and		80.0	82.0	2.0	0.32						
KBRC276	Boin	27.0	67.0	40.0	0.63	520217	635377	120	114	-55	216
including		44.0	46.0	2.0	3.42						
and		69.0	70.0	1.0	0.65						
and		80.0	83.0	3.0	0.35						
and		91.0	103.0	12.0	0.64						
including		91.0	95.0	4.0	1.12						
and		113.0	216.0	103.0	1.00						
including		121.0	126.0	5.0	4.16						
including		132.0	133.0	1.0	2.91						
including	198.0	214.0	16.0	1.67							
KBRC277	Boin	159.0	162.0	3.0	1.00	518205	632743	131	114	-60	216
KBRC278	Boin	117.0	132.0	15.0	1.49	518259	632764	129	114	-55	156
including		123.0	129.0	6.0	2.44						
KBRC279	Boin	152.0	160.0	8.0	0.68	518229	632779	127	114	-55	205
and		171.0	174.0	3.0	0.45						
KBRC280	Boin	140.0	141.0	1.0	0.29	518288	632806	122	114	-60	222

Newcore Gold Ltd. | Enchi Gold Project

2020 - 2021 Drill Results

Table accompanies news release dated December 15, 2021



Hole ID	Zone/Deposit	From (m)	To (m)	Length (m)	Au (g/t)	UTM East	UTM North	Elevation	Azimuth °	Dip °	Hole Length (m)
SWRC068	Sewum	3.0	5.0	2.0	0.28	521494	629230	193	120	-70	100
and		23.0	31.0	8.0	0.30						
and		39.0	42.0	3.0	0.35						
and		46.0	62.0	16.0	0.54						
including		51.0	57.0	6.0	0.93						
and		74.0	76.0	2.0	1.03						
SWRC069	Sewum	39.0	41.0	2.0	0.30	521442	629252	198	120	-70	125
and		50.0	59.0	9.0	0.55						
and		63.0	70.0	7.0	0.47						
and		98.0	114.0	16.0	1.20						
SWRC070	Sewum	43.0	45.0	2.0	1.41	521392	629273	193	120	-70	180
and		141.0	148.0	7.0	0.98						
SWRC071	Sewum	3.0	16.0	13.0	0.45	521347	628986	193	120	-55	100
and		38.0	43.0	5.0	0.46						
and		95.0	100.0	5.0	0.55						
SWRC072	Sewum	3.0	22.0	19.0	0.67	521408	628860	199	120	-60	150
and		46.0	84.0	38.0	0.42						
SWRC073	Sewum	0.0	28.0	28.0	1.52	520472	626241	119	130	-50	100
including		15.0	25.0	10.0	3.58						
and		36.0	42.0	6.0	1.21						
SWRC074	Sewum	7.0	38.0	31.0	0.84	520416	626193	105	130	-50	100
including		8.0	17.0	9.0	1.47						
and		48.0	60.0	12.0	0.71						
and		92.0	94.0	2.0	0.36						
SWRC075	Sewum	169.0	177.0	8.0	0.56	520355	626219	102	130	-60	220
SWRC076	Sewum	1.0	12.0	11.0	0.48	521308	627853	118	120	-50	120
and		39.0	88.0	49.0	0.91						
and		104.0	120.0	16.0	3.04						

Newcore Gold Ltd. | Enchi Gold Project

2020 - 2021 Drill Results

Table accompanies news release dated December 15, 2021



Hole ID	Zone/Deposit	From (m)	To (m)	Length (m)	Au (g/t)	UTM East	UTM North	Elevation	Azimuth °	Dip °	Hole Length (m)
SWRC077	Sewum	29.0	35.0	6.0	0.49	521268	627871	112	120	-50	180
and		54.0	56.0	2.0	0.36						
and		68.0	83.0	15.0	0.76						
and		89.0	92.0	3.0	0.62						
and		117.0	119.0	2.0	0.40						
and		126.0	131.0	5.0	0.40						
and		138.0	140.0	2.0	0.28						
and		151.0	153.0	2.0	0.35						
and		163.0	165.0	2.0	0.40						
SWRC078	Sewum		no significant results			520197	626036	83	120	-60	270
SWRC079	Sewum	207.0	209.0	2.0	0.37	520334	626242	104	120	-60	294
and		260.0	262.0	2.0	1.78						
and		278.0	284.0	6.0	0.98						
SWRC080	Sewum	149.0	159.0	10.0	1.35	520405	626279	113	120	-60	204
and		166.0	168.0	2.0	0.49						
SWRC081	Sewum		no significant results			520380	626293	104	120	-60	250
SWRC082	Sewum	36.0	60.0	24.0	2.02	520483	626291	115	120	-50	246
and		96.0	111.0	15.0	0.40						
and		222.0	224.0	2.0	0.55						
SWRC083	Sewum	86.0	108.0	22.0	1.97	520459	626301	124	120	-60	252
and		140.0	141.0	1.0	0.83						
SWRC084	Sewum	115.0	134.0	19.0	1.41	520472	626357	114	120	-60	250
SWRC085	Sewum	4.0	12.0	8.0	0.43	521395	628651	191	120	-50	100
and		42.0	44.0	2.0	0.36						
and		63.0	64.0	1.0	0.31						
SWRC086	Sewum	131.0	133.0	2.0	0.46	521353	628672	198	120	-50	150
SWRC087	Sewum	0.0	1.0	1.0	0.66	521415	628352	145	120	-50	120
and		84.0	86.0	2.0	0.48						

Newcore Gold Ltd. | Enchi Gold Project

2020 - 2021 Drill Results

Table accompanies news release dated December 15, 2021



Hole ID	Zone/Deposit	From (m)	To (m)	Length (m)	Au (g/t)	UTM East	UTM North	Elevation	Azimuth °	Dip °	Hole Length (m)
SWRC088	Sewum	7.0	18.0	11.0	0.32	521366	628375	145	120	-50	180
and		34.0	36.0	2.0	0.29						
and		56.0	63.0	7.0	0.35						
SWRC089	Sewum	12.0	13.0	1.0	0.33	521412	628244	127	120	-50	102
and		43.0	45.0	2.0	0.31						
and		47.0	49.0	2.0	0.30						
and		60.0	62.0	2.0	0.38						
SWRC090	Sewum	0.0	1.0	1.0	0.52	521370	628269	137	120	-50	156
and		66.0	68.0	2.0	0.29						
and		114.0	116.0	2.0	0.46						
and		119.0	121.0	2.0	0.73						
SWRC091	Sewum	4.0	5.0	1.0	0.32	521371	628158	107	120	-50	100
and		60.0	61.0	1.0	0.30						
and		81.0	82.0	1.0	0.40						
and		95.0	99.0	4.0	0.81						
SWRC092	Sewum	90.0	91.0	1.0	0.71	521270	627986	106	120	-50	220
and		140.0	148.0	8.0	0.37						
and		196.0	198.0	2.0	0.43						
SWRC093	Sewum	8.0	11.0	3.0	1.48	521364	627948	102	120	-50	168
and		32.0	49.0	17.0	0.60						
and		61.0	164.0	103.0	0.82						

Newcore Gold Ltd. | Enchi Gold Project

2020 - 2021 Drill Results

Table accompanies news release dated December 15, 2021



Hole ID	Zone/Deposit	From (m)	To (m)	Length (m)	Au (g/t)	UTM East	UTM North	Elevation	Azimuth °	Dip °	Hole Length (m)
SWRC094	Sewum	86.0	88.0	2.0	0.33	521225	627895	113	120	-50	254
and		91.0	94.0	3.0	0.32						
and		108.0	111.0	3.0	1.19						
and		115.0	131.0	16.0	1.26						
and		147.0	150.0	3.0	0.55						
and		158.0	164.0	6.0	1.51						
and		175.0	183.0	8.0	2.35						
and		187.0	195.0	8.0	0.71						
and		246.0	252.0	6.0	0.37						
SWRC095	Sewum	27.0	28.0	1.0	0.95	521155	627863	119	120	-50	242
and		122.0	124.0	2.0	1.63						
and		181.0	195.0	14.0	0.53						
and		233.0	238.0	5.0	1.16						
SWRC096	Sewum	0.0	1.0	1.0	2.44	521165	627779	105	120	-50	200
and		66.0	67.0	1.0	1.56						
and		83.0	84.0	1.0	0.54						
and		92.0	108.0	16.0	0.69						
and		136.0	138.0	2.0	0.40						
and		143.0	192.0	49.0	0.32						
SWRC097	Sewum	2.0	3.0	1.0	0.31	521164	627439	106	120	-50	180
and		22.0	23.0	1.0	0.36						
and		155.0	156.0	1.0	0.62						
SWRC098	Sewum	7.0	12.0	5.0	0.29	521375	628065	100	120	-50	150
and		59.0	60.0	1.0	0.66						
SWRC099	Sewum	9.0	10.0	1.0	0.42	521332	628166	110	120	-50	150
		94.0	96.0	2.0	0.21						
		118.0	130.0	12.0	0.73						
		136.0	138.0	2.0	0.29						

Newcore Gold Ltd. | Enchi Gold Project

2020 - 2021 Drill Results

Table accompanies news release dated December 15, 2021



Hole ID	Zone/Deposit	From (m)	To (m)	Length (m)	Au (g/t)	UTM East	UTM North	Elevation	Azimuth °	Dip °	Hole Length (m)
SWRC100	Sewum	116.0	122.0	6.0	0.60	520433	626319	116	120	-60	252
and		144.0	158.0	14.0	0.74						
and		189.0	190.0	1.0	1.06						
and		195.0	196.0	1.0	0.41						
SWRC101	Sewum	154.0	171.0	17.0	0.62	520451	626371	112	120	-60	220
SWRC102	Sewum	35.0	36.0	1.0	0.32	520332	626142	93	120	-60	200
SWRC103	Sewum	19.0	20.0	1.0	0.34	520348	626128	98	120	-50	174
and		63.0	72.0	9.0	0.77						
and		78.0	79.0	1.0	0.30						
and		83.0	87.0	4.0	0.47						
SWRC104	Sewum	26.0	27.0	1.0	0.95	520571	626500	93	120	-60	264
and		126.0	127.0	1.0	0.43						
and		146.0	150.0	4.0	0.92						
and		215.0	216.0	1.0	0.70						
SWRC105	Sewum	7.0	9.0	2.0	0.28	521415	628026	106	120	-50	274
and		84.0	85.0	1.0	0.65						
and		99.0	101.0	2.0	0.33						
SWRC106	Sewum		no significant results			521448	627900	104	120	-50	234
SWRC107	Sewum	4.0	81.0	77.0	0.63	521408	627918	102	120	-50	186
including		4.0	40.0	36.0	0.72						
and incl.		28.0	37.0	9.0	1.82						
including		48.0	80.0	32.0	0.70						
and incl.		53.0	67.0	14.0	1.22						
and		139.0	186.0	47.0	0.39						
SWRC108	Sewum	78.0	79.0	1.0	0.31	521444	628077	114	120	-50	300
and		139.0	143.0	4.0	0.42						
SWRC109	Sewum	116.0	117.0	1.0	0.24	521438	627962	104	120	-50	262
and		154.0	155.0	1.0	0.23						
SWRC110	Sewum		no significant results			521480	627942	105	120	-50	222

Newcore Gold Ltd. | Enchi Gold Project

2020 - 2021 Drill Results

Table accompanies news release dated December 15, 2021



Hole ID	Zone/Deposit	From (m)	To (m)	Length (m)	Au (g/t)	UTM East	UTM North	Elevation	Azimuth °	Dip °	Hole Length (m)
SWRC111	Sewum	5.0	11.0	6.0	0.25	521341	627895	108	120	-50	300
and		63.0	76.0	13.0	0.22						
and		90.0	92.0	2.0	0.49						
and		108.0	109.0	1.0	0.42						
and		112.0	113.0	1.0	0.37						
and		115.0	124.0	9.0	0.66						
and		175.0	176.0	1.0	0.36						
and		180.0	181.0	1.0	0.40						
and		214.0	215.0	1.0	0.31						
and		248.0	254.0	6.0	0.28						
and		262.0	263.0	1.0	0.38						
and		287.0	298.0	11.0	0.23						
SWRC112	Sewum	32.0	33.0	1.0	0.38						
and		51.0	57.0	6.0	0.44						
and		116.0	117.0	1.0	0.46						
and		149.0	150.0	1.0	0.45						
and		185.0	186.0	1.0	0.30						
and		213.0	216.0	3.0	0.29						
SWRC113	Sewum	46.0	48.0	2.0	0.61	521387	627988	98	120	-50	283
and		61.0	65.0	4.0	0.33						
and		84.0	86.0	2.0	0.32						
and		164.0	166.0	2.0	0.29						
and		207.0	208.0	1.0	0.50						
and		220.0	283.0	63.0	0.24						
including		231.0	233.0	2.0	0.49						
including		255.0	257.0	2.0	0.42						
including		271.0	283.0	12.0	0.39						

Newcore Gold Ltd. | Enchi Gold Project

2020 - 2021 Drill Results

Table accompanies news release dated December 15, 2021



Hole ID	Zone/Deposit	From (m)	To (m)	Length (m)	Au (g/t)	UTM East	UTM North	Elevation	Azimuth °	Dip °	Hole Length (m)
SWDD070A	Sewum	131.4	131.8	0.4	2.48	521129	627940	118	120	-57	320.4
and		212.4	213.0	0.6	0.42						
and		243.0	244.0	1.0	0.38						
and		285.5	298.2	12.7	0.17						
SWDD071B	Sewum	77.5	79.0	1.5	0.63	521312	627963	100	120	-55	374.5
and		104.0	118.0	14.0	2.33						
including		110.0	117.0	7.0	4.08						
and incl.		116.0	117.0	1.0	20.54						
and		123.0	127.0	4.0	0.67						
and		149.0	151.0	2.0	0.93						
and		162.0	166.1	4.1	0.33						
and		171.0	172.0	1.0	0.31						
and		242.0	244.0	2.0	0.30						
and		277.6	291.0	13.4	0.40						
SWDD072	Sewum	134.0	135.4	1.4	0.23	521119	627799	111	120	-55	259.8
and		184.3	186.2	1.9	0.27						
and		221.3	228.0	6.7	0.79						
SWDD073	Sewum	159.0	164.1	5.1	0.75	521264	628205	131	120	-55	350.1
and		168.0	180.8	12.8	0.34						
and		195.5	202.0	6.5	1.61						
and		220.2	223.7	3.5	0.78						
and		231.2	237.3	6.1	0.56						
including		231.2	233.0	1.8	1.24						
and		257.2	258.0	0.8	0.42						
and		273.3	284.5	11.2	0.63						
including		283.0	284.5	1.5	2.38						
and		294.0	297.0	3.0	0.57						
and		303.0	307.0	4.0	0.31						
and		319.7	327.0	7.3	0.64						

Newcore Gold Ltd. | Enchi Gold Project

2020 - 2021 Drill Results

Table accompanies news release dated December 15, 2021



Hole ID	Zone/Deposit	From (m)	To (m)	Length (m)	Au (g/t)	UTM East	UTM North	Elevation	Azimuth °	Dip °	Hole Length (m)
SWDD074	Sewum	6.0	9.0	3.0	0.26	521313	628290	143	120	-55	329.2
and		57.2	60.4	3.2	0.42						
and		107.0	108.0	1.0	0.30						
and		114.0	115.0	1.0	1.01						
and		149.4	150.0	0.6	0.65						
and		236.1	237.4	1.3	0.28						
SWDD075	Sewum	2.0	18.0	16.0	0.58	521303	628694	195	120	-52	389.3
and		101.0	108.3	7.3	0.31						
and		125.0	125.9	0.9	1.75						
and		344.3	345.0	0.7	1.05						
and		350.0	365.6	15.6	0.98						
including		359.0	365.6	6.6	2.00						
SWDD076	Sewum	130.0	146.0	16.0	0.54	520522	626435	107	120	-55	275.1
including		131.0	132.0	1.0	1.64						
and		160.0	161.0	1.0	0.49						
SWDD077	Sewum	148.0	149.0	1.0	0.53	520396	626389	102	120	-55	302.1
and		224.0	233.0	9.0	1.23						
including		227.0	230.1	3.1	1.98						
and		243.0	245.0	2.0	0.45						
and		253.3	255.0	1.7	0.74						
and		289.2	290.1	0.9	0.32						
SWDD078	Sewum	250.0	250.8	0.8	0.63	520300	626255	99	120	-60	371.4
and		324.0	331.0	7.0	0.39						

Newcore Gold Ltd. | Enchi Gold Project

2020 - 2021 Drill Results

Table accompanies news release dated December 15, 2021



Hole ID	Zone/Deposit	From (m)	To (m)	Length (m)	Au (g/t)	UTM East	UTM North	Elevation	Azimuth °	Dip °	Hole Length (m)
SWDD079A	Sewum	39.4	56.0	16.6	0.20	521289	628910	174	120	-60	404.6
and		62.2	72.0	9.8	0.21						
and		75.8	79.0	3.2	0.38						
and		120.0	132.0	12.0	0.33						
and		173.6	187.0	13.4	0.52						
and		191.9	195.0	3.1	0.56						
and		209.9	212.0	2.1	0.37						
and		220.2	221.0	0.8	0.37						
and		307.0	310.0	3.0	0.28						
and		313.0	314.0	1.0	0.47						
and		404.0	405.0	1.0	0.34						
SWDD080	Sewum	214.0	215.0	1.0	0.52						
and		247.1	249.0	1.9	0.42						
NBRC016	Nyam	23.0	29.0	6.0	1.03	530221	637264	81	300	-60	130
and		50.0	54.0	4.0	0.40						
and		68.0	86.0	18.0	0.63						
and		97.0	100.0	3.0	0.48						
and		109.0	112.0	3.0	0.55						
NBRC017	Nyam	8.0	53.0	45.0	1.38	530241	637278	69	300	-60	150
including		8.0	30.0	22.0	0.74						
and incl.		47.0	53.0	6.0	6.25						
and		64.0	66.0	2.0	1.88						
and		83.0	93.0	10.0	0.41						
and		102.0	107.0	5.0	0.54						
and		135.0	137.0	2.0	0.34						
NBRC018	Nyam	10.0	12.0	2.0	0.25	530180	637314	76	300	-60	84
and		36.0	42.0	6.0	0.32						
NBRC019	Nyam	80.0	82.0	2.0	0.35	530845	638277	81	300	-60	156
and		91.0	108.0	17.0	1.20						

Newcore Gold Ltd. | Enchi Gold Project

2020 - 2021 Drill Results

Table accompanies news release dated December 15, 2021



Hole ID	Zone/Deposit	From (m)	To (m)	Length (m)	Au (g/t)	UTM East	UTM North	Elevation	Azimuth °	Dip °	Hole Length (m)
NBRC020	Nyam	51.0	60.0	9.0	1.14	530506	637714	86	300	-60	150
and		73.0	102.0	29.0	0.94						
and		110.0	120.0	10.0	1.18						
and		139.0	143.0	4.0	0.41						
NBRC021	Nyam	15.0	17.0	2.0	0.33	530474	637679	93	300	-60	130
and		32.0	34.0	2.0	0.73						
and		50.0	54.0	4.0	1.56						
and		63.0	84.0	21.0	1.42						
and		90.0	96.0	6.0	1.26						
and		102.0	105.0	3.0	0.36						
and		109.0	119.0	10.0	0.52						
and		126.0	129.0	3.0	0.65						
NBRC022	Nyam	8.0	10.0	2.0	1.96	530435	637610	102	300	-60	150
and		70.0	90.0	20.0	1.72						
and		116.0	119.0	3.0	0.36						
NBRC023	Nyam	49.0	51.0	2.0	0.19	530712	638187	98	300	-60	80
NBRC024	Nyam	22.0	26.0	4.0	0.67	530262	637265	78	300	-60	156
and		41.0	42.0	1.0	0.89						
and		57.0	84.0	27.0	1.34						
and		93.0	102.0	9.0	3.45						
and		113.0	120.0	7.0	0.47						
and		137.0	146.0	9.0	0.38						
NBRC025	Nyam	33.0	35.0	2.0	0.51	530284	637253	78	300	-60	174
and		72.0	73.0	1.0	0.41						
and		92.0	124.0	32.0	0.84						
and		136.0	139.0	3.0	0.51						
and		151.0	162.0	11.0	0.55						

Newcore Gold Ltd. | Enchi Gold Project

2020 - 2021 Drill Results

Table accompanies news release dated December 15, 2021



Hole ID	Zone/Deposit	From (m)	To (m)	Length (m)	Au (g/t)	UTM East	UTM North	Elevation	Azimuth °	Dip °	Hole Length (m)
NBRC026	Nyam	64.0	66.0	2.0	0.36	530262	637240	75	300	-60	204
and		79.0	91.0	12.0	0.42						
and		96.0	98.0	2.0	0.86						
and		105.0	109.0	4.0	2.39						
and		116.0	117.0	1.0	0.65						
and		125.0	127.0	2.0	1.00						
and		145.0	148.0	3.0	0.57						
and		170.0	173.0	3.0	0.41						
and		177.0	179.0	2.0	0.34						
NBRC027	Nyam	3.0	9.0	6.0	2.83	530200	637284	74	300	-60	110
and		39.0	55.0	16.0	0.48						
and		60.0	62.0	2.0	0.36						
NBRC028	Nyam	32.0	36.0	4.0	0.46	530122	637161	76	300	-60	132
and		60.0	74.0	14.0	0.49						
NBRC029	Nyam	10.0	11.0	1.0	1.15	530142	637152	78	300	-60	150
and		59.0	61.0	2.0	0.82						
and		87.0	89.0	2.0	0.53						
NBRC030	Nyam	69.0	85.0	16.0	1.17	530180	637146	77	300	-60	180
and		102.0	104.0	2.0	0.53						
and		110.0	115.0	5.0	1.48						
and		150.0	155.0	5.0	0.34						
and		158.0	160.0	2.0	0.32						
NBRC031	Nyam	28.0	29.0	1.0	0.49	530297	637242	80	300	-60	210
and		104.0	106.0	2.0	0.32						
and		124.0	148.0	24.0	0.31						
and		158.0	164.0	6.0	1.48						
and		177.0	188.0	11.0	1.28						
NBRC032	Nyam	170.0	226.0	56.0	0.40	530507	637573	72	300	-60	258

Newcore Gold Ltd. | Enchi Gold Project

2020 - 2021 Drill Results

Table accompanies news release dated December 15, 2021



Hole ID	Zone/Deposit	From (m)	To (m)	Length (m)	Au (g/t)	UTM East	UTM North	Elevation	Azimuth °	Dip °	Hole Length (m)
NBRC033	Nyam	151.0	153.0	2.0	0.57	530909	638234	97	300	-60	264
and		201.0	214.0	13.0	1.00						
and		233.0	235.0	2.0	0.32						
NBRC034	Nyam	0.0	14.0	14.0	0.59	530760	638239	100	300	-60	156
NBRC035	Nyam	130.0	132.0	2.0	0.57	530910	638345	84	300	-60	156
and		135.0	137.0	2.0	0.54						
and		142.0	144.0	2.0	0.78						
NBRC036	Nyam	7.0	9.0	2.0	0.75	531135	638959	70	300	-60	102
and		87.0	88.0	1.0	0.38						
NBRC037	Nyam	6.0	7.0	1.0	0.34	531161	638947	79	300	-60	156
and		20.0	21.0	1.0	0.69						
and		68.0	77.0	9.0	0.46						
and		81.0	83.0	2.0	0.48						
NBRC038	Nyam	109.0	112.0	3.0	0.52	531190	638936	68	300	-60	204
and		122.0	126.0	4.0	0.42						
and		130.0	132.0	2.0	0.33						
NBRC039	Nyam	7.0	29.0	22.0	0.50	531096	638870	72	300	-60	114
NBRC040	Nyam	52.0	70.0	18.0	0.30	531120	638857	75	300	-60	156
and		76.0	83.0	7.0	1.05						
NBRC041	Nyam	111.0	131.0	20.0	0.39	531147	638847	74	300	-60	201
NBRC042A	Nyam	9.0	15.0	6.0	0.40	531054	638780	83	300	-60	102
and		24.0	37.0	13.0	0.62						
NBRC043	Nyam	104.0	124.0	20.0	0.31	531099	638758	76	300	-60	180
NBRC044	Nyam	8.0	10.0	2.0	0.98	530696	638123	132	300	-60	162
and		17.0	20.0	3.0	0.53						
and		41.0	67.0	26.0	1.17						
NBRC045	Nyam	165.0	174.0	9.0	0.81	530544	637644	115	300	-60	252
and		179.0	219.0	40.0	1.57						
including		185.0	194.0	9.0	5.40						

Newcore Gold Ltd. | Enchi Gold Project

2020 - 2021 Drill Results

Table accompanies news release dated December 15, 2021



Hole ID	Zone/Deposit	From (m)	To (m)	Length (m)	Au (g/t)	UTM East	UTM North	Elevation	Azimuth °	Dip °	Hole Length (m)
NBRC046	Nyam	116.0	119.0	3.0	0.52	530527	637695	104	300	-60	186
and		124.0	147.0	23.0	0.60						
NBRC047	Nyam	182.0	205.0	23.0	0.48	530572	637672	112	300	-60	247
and		212.0	216.0	4.0	0.40						
and		222.0	247.0	25.0	1.94						
including		227.0	234.0	7.0	5.78						
NBRC048	Nyam	79.0	85.0	6.0	0.33	530333	637622	101	300	-60	114
and		95.0	101.0	6.0	0.31						
and		104.0	114.0	10.0	0.30						
NBRC049	Nyam	7.0	10.0	3.0	0.39	530360	637607	102	300	-60	134
and		13.0	14.0	1.0	0.37						
NBRC050	Nyam	11.0	13.0	2.0	1.23	530339	637516	96	300	-60	120
and		23.0	27.0	4.0	1.03						
and		35.0	45.0	10.0	0.67						
and		50.0	53.0	3.0	0.35						
NBRC051	Nyam	15.0	16.0	1.0	0.30	530325	637479	93	300	-60	126
and		28.0	31.0	3.0	0.99						
and		38.0	47.0	9.0	0.69						
and		57.0	65.0	8.0	0.51						
NBRC052	Nyam	4.0	7.0	3.0	1.28	530267	637402	87	300	-60	115
and		17.0	22.0	5.0	0.31						
and		24.0	26.0	2.0	0.34						
and		38.0	40.0	2.0	0.34						
and		67.0	69.0	2.0	1.97						
NBRC053	Nyam	9.0	11.0	2.0	0.86	530292	637376	79	300	-60	155
and		42.0	44.0	2.0	0.32						
and		48.0	57.0	9.0	1.32						
and		100.0	107.0	7.0	0.33						

Newcore Gold Ltd. | Enchi Gold Project

2020 - 2021 Drill Results

Table accompanies news release dated December 15, 2021



Hole ID	Zone/Deposit	From (m)	To (m)	Length (m)	Au (g/t)	UTM East	UTM North	Elevation	Azimuth °	Dip °	Hole Length (m)
NBRC054	Nyam			no significant results		530206	637384	72	300	-60	115
NBRC055	Nyam	12.0	21.0	9.0	0.38	530229	637372	78	300	-60	144
and		102.0	103.0	1.0	1.04						
NBRC056	Nyam			no significant results		530086	637145	80	300	-60	153
NBRC057	Nyam	102.0	103.0	1.0	0.31	530012	637064	77	300	-60	150
NBRC058	Nyam	17.0	19.0	2.0	1.11	530119	637014	75	300	-60	162
and		94.0	95.0	2.0	0.29						
and		106.0	108.0	2.0	0.68						
NBRC059B	Nyam	97.0	106.0	10.0	1.60	530177	637089	73	300	-60	150
NBRC060	Nyam	7.0	8.0	1.0	0.74	529938	636854	84	300	-60	174
and		84.0	85.0	1.0	0.22						
NBRC061	Nyam			no significant results		529759	636735	106	300	-60	156
NBRC062	Nyam	60.0	61.0	1.0	0.26	529834	636686	99	300	-60	162
and		75.0	76.0	1.0	0.52						
NBRC063	Nyam			no significant results		529657	636560	114	300	-60	150
NBRC064	Nyam	58.0	59.0	1.0	0.49	529735	636517	113	300	-60	150
NBRC065	Nyam			no significant results		529555	636386	117	300	-60	156
NBRC066	Nyam	89.0	104.0	15.0	0.52	529631	636341	94	300	-60	153
NBRC067	Nyam	49.0	50.0	1.0	0.36	530332	637356	79	300	-60	184
and		87.0	89.0	2.0	0.35						
and		111.0	113.0	2.0	0.43						
and		129.0	130.0	1.0	1.14						
and		147.0	184.0	37.0	0.54						
including		159.0	164.0	5.0	1.69						

Newcore Gold Ltd. | Enchi Gold Project

2020 - 2021 Drill Results

Table accompanies news release dated December 15, 2021



Hole ID	Zone/Deposit	From (m)	To (m)	Length (m)	Au (g/t)	UTM East	UTM North	Elevation	Azimuth °	Dip °	Hole Length (m)
NBRC068	Nyam	48.0	49.0	1.0	1.03	530363	637340	85	300	-60	252
and		104.0	105.0	1.0	0.34						
and		121.0	122.0	1.0	1.66						
and		153.0	154.0	1.0	0.35						
and		201.0	203.0	2.0	0.93						
and		234.0	238.0	4.0	0.62						
NBRC069	Nyam	16.0	25.0	9.0	0.60	530308	637454	89	300	-60	144
and		33.0	38.0	5.0	0.58						
and		56.0	58.0	2.0	0.41						
NBRC070	Nyam	79.0	80.0	1.0	1.11	530251	637110	81	300	-50	240
and		148.0	149.0	1.0	0.52						
and		181.0	183.0	2.0	0.58						
and		195.0	199.0	4.0	1.02						
and		231.0	234.0	3.0	0.75						
NBRC071	Nyam	60.0	65.0	5.0	0.44	530354	637456	93	300	-50	135
and		92.0	93.0	1.0	1.53						
and		101.0	118.0	17.0	0.72						
NBRC072	Nyam	59.0	61.0	2.0	0.58	530402	637545	95	300	-60	140
and		76.0	78.0	2.0	0.46						
and		85.0	105.0	20.0	0.58						
and		127.0	129.0	2.0	0.62						
NBRC073	Nyam	26.0	27.0	1.0	0.40	530425	637572	98	300	-60	142
and		74.0	131.0	57.0	0.78						
including		94.0	103.0	9.0	1.34						
NBRC074	Nyam	125.0	131.0	6.0	0.45	530457	637552	94	300	-60	197
and		141.0	147.0	6.0	0.55						
and		163.0	178.0	15.0	0.55						
including		157.0	159.0	2.0	0.99						
and		192.0	194.0	2.0	1.42						

Newcore Gold Ltd. | Enchi Gold Project

2020 - 2021 Drill Results

Table accompanies news release dated December 15, 2021



Hole ID	Zone/Deposit	From (m)	To (m)	Length (m)	Au (g/t)	UTM East	UTM North	Elevation	Azimuth °	Dip °	Hole Length (m)
NBRC075	Nyam	0.0	35.0	35.0	2.04	530404	637629	99	300	-60	144
including		8.0	16.0	8.0	4.89						
and incl.		9.0	11.0	2.0	9.60						
and		108.0	110.0	2.0	0.27						
NBRC076	Nyam	1.0	51.0	50.0	0.85	530442	637701	96	300	-60	120
including		1.0	14.0	13.0	1.18						
and incl.		31.0	39.0	8.0	2.10						
NBRC077	Nyam	52.0	60.0	8.0	0.51	530488	637722	83	300	-60	183
and		69.0	98.0	29.0	1.13						
and		119.0	126.0	7.0	0.49						
and		141.0	145.0	4.0	0.39						
NBRC078	Nyam	27.0	30.0	3.0	0.57	530501	637751	85	300	-55	144
and		36.0	115.0	79.0	0.53						
NBRC079	Nyam	92.0	119.0	27.0	0.89	530538	637730	93	300	-55	160
including		104.0	109.0	5.0	2.19						
and		132.0	142.0	10.0	0.45						
NBRC080	Nyam	62.0	68.0	6.0	0.51	530536	637767	87	300	-60	180
and		81.0	83.0	2.0	0.41						
and		91.0	94.0	3.0	4.63						
and		106.0	111.0	5.0	0.96						
and		124.0	132.0	8.0	0.70						
NBRC081	Nyam	33.0	43.0	10.0	0.99	530615	637853	83	300	-50	144
and		94.0	101.0	7.0	0.46						
and		120.0	130.0	10.0	1.68						
NBRC082	Nyam	0.0	12.0	12.0	0.34	530599	637880	88	300	-60	162
and		75.0	83.0	8.0	0.52						
and		93.0	108.0	15.0	1.18						
including		93.0	97.0	4.0	2.41						
NBRC083	Nyam	71.0	72.0	1.0	0.32	530548	637941	84	300	-60	100

Newcore Gold Ltd. | Enchi Gold Project

2020 - 2021 Drill Results

Table accompanies news release dated December 15, 2021



Hole ID	Zone/Deposit	From (m)	To (m)	Length (m)	Au (g/t)	UTM East	UTM North	Elevation	Azimuth °	Dip °	Hole Length (m)
NBRC084	Nyam	92.0	102.0	10.0	0.93	530634	637896	88	300	-50	126
and		108.0	120.0	12.0	0.89						
NBRC085	Nyam	0.0	18.0	18.0	1.26	530572	637961	89	300	-60	120
including		11.0	13.0	2.0	6.46						
and		82.0	85.0	3.0	0.60						
NBRC086	Nyam	10.0	12.0	2.0	0.32	530597	637974	89	300	-60	130
and		17.0	36.0	19.0	1.24						
and		101.0	102.0	1.0	0.45						
and		115.0	117.0	2.0	0.37						
and		121.0	128.0	7.0	0.42						
NBRC087	Nyam	1.0	4.0	3.0	0.51	530632	637952	95	300	-60	120
and		71.0	79.0	8.0	0.52						
and		84.0	103.0	19.0	2.14						
including		92.0	94.0	2.0	4.14						
NBRC088	Nyam	57.0	85.0	28.0	0.88	530616	637935	95	300	-60	110
and		80.0	82.0	2.0	5.09						
NBRC089	Nyam	0.0	5.0	5.0	1.86	530631	637994	103	300	-60	152
and		37.0	39.0	2.0	0.76						
and		44.0	53.0	9.0	0.92						
and		60.0	62.0	2.0	0.88						
NBDD048	Nyam	82.0	84.0	2.0	0.53	530341	637217	96	300	-60	319.2
and		182.0	183.0	1.0	0.84						
and		207.0	208.0	1.0	0.81						
and		212.0	213.0	1.0	0.30						
and		227.0	229.0	2.0	0.37						
and		236.0	249.0	13.0	4.51						
including		237.5	245.2	7.7	7.40						
and		269.0	271.0	2.0	1.24						
and		295.7	299.0	3.3	0.69						

Newcore Gold Ltd. | Enchi Gold Project

2020 - 2021 Drill Results

Table accompanies news release dated December 15, 2021



Hole ID	Zone/Deposit	From (m)	To (m)	Length (m)	Au (g/t)	UTM East	UTM North	Elevation	Azimuth °	Dip °	Hole Length (m)
NBDD049	Nyam	114.0	115.0	1.0	0.72	530629	637594	99	300	-62	382.3
and		121.2	122.7	1.5	1.42						
and		255.5	258.7	3.5	0.90						
and		307.0	310.0	3.0	0.27						
and		323.0	342.0	19.0	0.37						
including		327.0	335.0	8.0	0.54						
and		361.0	364.0	3.0	0.67						
NBDD050	Nyam	116.0	117.5	1.5	0.35	530617	637648	107	300	-63	337.3
and		159.0	160.5	1.5	0.30						
and		183.3	186.0	2.7	0.33						
and		211.0	213.0	2.0	0.81						
and		277.0	281.7	4.7	0.26						
and		293.0	300.0	7.0	0.45						
and		320.0	321.0	1.0	0.41						
and		332.5	333.6	1.5	0.57						
NBDD051	Nyam	45.8	46.4	0.6	0.33	530286	637133	75	300	-63	360.7
and		65.0	66.8	1.8	0.82						
and		90.0	91.0	1.0	0.49						
and		105.0	107.1	2.1	0.23						
and		240.0	242.2	2.2	0.34						
and		245.0	247.6	2.6	0.42						
and		254.0	266.0	12.0	0.65						
and		274.0	276.0	2.0	4.57						
and		305.0	306.8	1.8	1.81						
NBDD052	Nyam	207.0	212.0	5.0	1.47	530677	637738	105	300	-63	393.7
and		280.0	297.0	17.0	0.31						
and		321.0	336.0	15.0	3.21						
including		322.0	330.0	8.0	5.57						

Newcore Gold Ltd. | Enchi Gold Project

2020 - 2021 Drill Results

Table accompanies news release dated December 15, 2021



Hole ID	Zone/Deposit	From (m)	To (m)	Length (m)	Au (g/t)	UTM East	UTM North	Elevation	Azimuth °	Dip °	Hole Length (m)
NBDD053	Nyam	172.0	174.0	2.0	0.82	530628	637680	109	300	-63	382.4
and		253.0	254.0	1.0	0.74						
and		258.0	275.0	17.0	0.50						
and		291.2	300.1	8.9	1.54						
including		291.2	293.0	1.8	3.78						
including		297.0	298.0	1.0	4.20						
and		311.4	314.6	3.2	0.58						
and		326.6	337.2	10.6	0.37						
NBDD054	Nyam	167.0	170.0	3.0	1.77	530672	637613	118	300	-63	466.7
and		373.4	374.5	1.1	1.38						
and		390.0	397.0	30.0	0.34						
and		423.9	431.0	7.1	0.98						
including		428.4	429.0	0.6	3.52						
NBDD055	Nyam	211.0	213.0	2.0	0.29	530401	637334	92	300	-63	337.4
		248.8	250.0	1.2	1.17						
		263.0	265.0	2.0	0.74						
		268.0	270.0	2.0	0.32						
		276.0	284.0	8.0	1.57						
		279.0	281.2	2.2	2.64						
NBDD056	Nyam	100.0	102.3	2.3	1.49	530364	637280	95	300	-63	331.4
		248.7	273.5	24.8	1.62						
		248.7	257.7	9.0	3.17						
		278.0	291.0	13.0	0.67						
		303.4	305.3	1.9	0.46						
NKRC001	Nkwanta		no significant results			525094	633089	101	300	-55	100
KKRC017A	Kwakyekrom	45.0	48.0	3.0	0.52	528698	634833	127	298	-60	150
and		69.0	70.0	1.0	1.17						
and		89.0	120.0	31.0	0.46						
including		107.0	120.0	13.0	0.72						

Newcore Gold Ltd. | Enchi Gold Project

2020 - 2021 Drill Results

Table accompanies news release dated December 15, 2021



Hole ID	Zone/Deposit	From (m)	To (m)	Length (m)	Au (g/t)	UTM East	UTM North	Elevation	Azimuth °	Dip °	Hole Length (m)
KKRC018	Kwakyekrom	35.0	39.0	4.0	0.29	528658	634784	129	298	-60	120
and		86.0	92.0	6.0	0.80						
and		99.0	110.0	11.0	2.35						
KKRC019	Kwakyekrom	4.0	7.0	3.0	0.36	528611	634738	128	298	-60	120
and		58.0	78.0	20.0	0.36						
including		59.0	63.0	4.0	0.50						
and incl.		70.0	76.0	6.0	0.64						
and		88.0	92.0	4.0	0.38						
and	102.0	104.0	2.0	0.50							
KKRC020	Kwakyekrom	26.0	28.0	2.0	0.79	528598	634714	133	298	-60	110
and		44.0	47.0	3.0	0.43						
and		60.0	75.0	15.0	0.48						
and		79.0	83.0	4.0	1.04						
KKRC021	Kwakyekrom	52.0	69.0	17.0	0.57	528592	634693	132	298	-60	114
and		97.0	104.0	7.0	0.94						
KKRC022	Kwakyekrom	41.0	67.0	26.0	0.51	528555	634617	124	298	-60	114
including		59.0	66.0	5.0	1.59						
and		101.0	104.0	3.0	0.57						
KKRC023	Kwakyekrom	34.0	40.0	6.0	4.71	528542	634595	117	298	-60	122
and		60.0	66.0	6.0	0.34						
KKRC024	Kwakyekrom	35.0	38.0	3.0	0.77	528550	634557	104	298	-60	130
and		59.0	74.0	15.0	0.44						
and		104.0	113.0	9.0	0.23						
KKRC025	Kwakyekrom	0.0	18.0	18.0	0.45	528502	634580	103	298	-60	100
including		13.0	17.0	4.0	1.00						
and		23.0	29.0	6.0	0.57						
and		69.0	77.0	8.0	0.21						
and		89.0	100.0	11.0	0.63						

Newcore Gold Ltd. | Enchi Gold Project

2020 - 2021 Drill Results

Table accompanies news release dated December 15, 2021



Hole ID	Zone/Deposit	From (m)	To (m)	Length (m)	Au (g/t)	UTM East	UTM North	Elevation	Azimuth °	Dip °	Hole Length (m)
KKRC026	Kwakyekrom	20.0	24.0	4.0	1.32	528614	634705	128	298	-60	162
and		70.0	73.0	3.0	0.44						
and		80.0	94.0	14.0	1.69						
and		120.0	121.0	1.0	0.44						
and		126.0	128.0	2.0	0.63						
and		138.0	141.0	3.0	0.31						
KKRC027	Kwakyekrom	1.0	3.0	2.0	0.29	528611	634689	128	298	-60	168
and		49.0	51.0	2.0	0.42						
and		78.0	81.0	3.0	0.39						
and		84.0	101.0	17.0	0.91						
KKRC028	Kwakyekrom	111.0	137.0	26.0	1.43	528632	634668	126	298	-60	213
including		115.0	124.0	9.0	3.31						
and		149.0	157.0	8.0	0.34						
and		162.0	167.0	5.0	0.69						
and		176.0	180.0	4.0	0.39						
KKRC029	Kwakyekrom	21.0	45.0	24.0	0.89	528574	634699	133	298	-60	126
and		54.0	56.0	2.0	0.41						
and		116.0	118.0	2.0	0.35						
and		123.0	125.0	2.0	0.43						
KKRC030	Kwakyekrom	65.0	66.0	1.0	0.42	528653	634733	127	298	-60	180
and		68.0	69.0	1.0	0.46						
and		109.0	127.0	18.0	0.97						
and		145.0	147.0	2.0	0.43						
KKRC031	Kwakyekrom	30.0	32.0	2.0	0.78	528682	634774	131	298	-60	186
and		114.0	124.0	10.0	2.97						
and		162.0	168.0	6.0	0.88						
and		181.0	184.0	3.0	0.36						
KKRC032	Kwakyekrom	14.0	24.0	10.0	0.32	528570	634723	134	298	-60	114
and		56.0	63.0	7.0	0.40						

Newcore Gold Ltd. | Enchi Gold Project

2020 - 2021 Drill Results

Table accompanies news release dated December 15, 2021



Hole ID	Zone/Deposit	From (m)	To (m)	Length (m)	Au (g/t)	UTM East	UTM North	Elevation	Azimuth °	Dip °	Hole Length (m)
KKRC033	Kwakyekrom	26.0	28.0	2.0	0.33	528569	634584	109	298	-60	126
and		47.0	49.0	2.0	0.41						
and		69.0	75.0	6.0	1.19						
KKRC034	Kwakyekrom	14.0	46.0	32.0	0.68	528517	634607	124	298	-60	102
and		67.0	74.0	7.0	0.58						
and		90.0	95.0	5.0	0.34						
KKRC035	Kwakyekrom	0.0	7.0	7.0	0.46	528532	634631	125	298	-60	108
and		17.0	25.0	8.0	0.82						
and		39.0	41.0	2.0	0.30						
KKRC036	Kwakyekrom	19.0	22.0	3.0	0.49	528625	634796	130	298	-60	114
and		28.0	31.0	3.0	0.41						
and		54.0	61.0	7.0	1.95						
and		93.0	114.0	21.0	0.41						
KKRC037	Kwakyekrom	44.0	46.0	2.0	0.35	528661	634846	126	298	-60	110
and		88.0	92.0	4.0	0.49						
and		105.0	107.0	2.0	4.12						
KKRC038	Kwakyekrom	36.0	29.0	3.0	0.38	528738	634809	128	298	-60	200
and		97.0	111.0	14.0	0.35						
and		126.0	128.0	2.0	0.37						
and		131.0	143.0	12.0	0.83						
and		153.0	170.0	17.0	1.44						
KKRC039	Kwakyekrom	28.0	38.0	10.0	0.31	528692	634909	129	298	-60	129
KKRC040	Kwakyekrom	12.0	39.0	27.0	0.34	528741	634889	127	298	-60	162
and		95.0	99.0	4.0	0.29						
and		107.0	109.0	2.0	1.29						
and		116.0	120.0	4.0	0.47						
KKRC041	Kwakyekrom	0.0	53.0	53.0	0.79	528466	634474	104	298	-60	120
and		70.0	84.0	14.0	0.45						

Newcore Gold Ltd. | Enchi Gold Project

2020 - 2021 Drill Results

Table accompanies news release dated December 15, 2021



Hole ID	Zone/Deposit	From (m)	To (m)	Length (m)	Au (g/t)	UTM East	UTM North	Elevation	Azimuth °	Dip °	Hole Length (m)
KKRC042	Kwakyekrom	0.0	2.0	2.0	0.33	528440	634487	108	298	-60	100
and		38.0	39.0	1.0	0.50						
and		48.0	50.0	2.0	0.35						
and		56.0	62.0	6.0	0.47						
KKRC043	Kwakyekrom	73.0	83.0	10.0	1.51	528580	634606	123	298	-60	144
and		89.0	92.0	3.0	1.16						
and		138.0	140.0	2.0	0.90						
KKRC044	Kwakyekrom	14.0	22.0	8.0	0.49	528362	634281	143	298	-60	114
KKRC045	Kwakyekrom	80.0	87.0	7.0	1.03	528409	634257	142	298	-60	162
KKRC046	Kwakyekrom	55.0	79.0	24.0	0.50	528407	634372	123	298	-60	96
including		58.0	72.0	14.0	0.61						
KKRC047	Kwakyekrom	74.0	76.0	2.0	0.33	528454	634348	124	298	-60	138
and		88.0	96.0	8.0	0.41						
KKRC048	Kwakyekrom	24.0	26.0	2.0	0.46	528499	634456	106	298	-60	150
and		58.0	73.0	15.0	1.29						
and		111.0	122.0	11.0	1.86						
and		144.0	147.0	3.0	0.69						
KKRC049	Kwakyekrom	60.0	67.0	7.0	0.34	528539	634435	109	298	-60	213
and		117.0	120.0	3.0	0.91						
and		197.0	200.0	3.0	0.40						
and		208.0	213.0	5.0	2.33						
KKRC050	Kwakyekrom	0.0	3.0	3.0	0.37	528572	634653	131	298	-60	132
and		25.0	28.0	3.0	0.32						
and		36.0	56.0	20.0	0.55						
and		97.0	118.0	21.0	0.46						
including		97.0	108.0	11.0	0.71						

Newcore Gold Ltd. | Enchi Gold Project

2020 - 2021 Drill Results

Table accompanies news release dated December 15, 2021



Hole ID	Zone/Deposit	From (m)	To (m)	Length (m)	Au (g/t)	UTM East	UTM North	Elevation	Azimuth °	Dip °	Hole Length (m)
KKRC051	Kwakyekrom	148.0	198.0	50.0	0.61	528656	634656	119	298	-60	246
including		164.0	173.0	9.0	1.36						
and		210.0	212.0	2.0	0.44						
and		225.0	227.0	2.0	1.02						
and		241.0	244.0	3.0	0.63						
KKRC052	Kwakyekrom	54.0	55.0	1.0	0.64	528640	634698	122	298	-60	192
and		75.0	76.0	1.0	0.52						
and		112.0	132.0	20.0	1.19						
including		113.0	118.0	5.0	2.75						
KKRC053	Kwakyekrom	145.0	149.0	4.0	0.90	528667	634679	120	298	-60	240
and		172.0	190.0	18.0	0.75						
and		210.0	212.0	2.0	0.38						
KKRC054	Kwakyekrom	98.0	109.0	11.0	0.58	528602	634632	128	298	-60	156
KKRC055	Kwakyekrom	8.0	12.0	4.0	1.21	528590	634565	106	298	-60	168
and		98.0	99.0	1.0	0.70						
and		108.0	121.0	13.0	0.94						
and		162.0	163.0	1.0	0.54						
KKRC056	Kwakyekrom	81.0	88.0	7.0	0.23	528600	634591	114	298	-60	189
and		105.0	106.0	1.0	0.45						
and		110.0	125.0	15.0	0.96						
including		110.0	119.0	9.0	1.46						
and		129.0	130.0	1.0	0.35						
and		134.0	141.0	7.0	0.23						
and		160.0	189.0	29.0	0.94						
including		170.0	176.0	6.0	2.65						
KKRC057	Kwakyekrom	90.0	91.0	1.0	0.31	528636	634623	120	298	-60	202
and		119.0	121.0	2.0	0.31						
and		131.0	148.0	17.0	0.25						
and		192.0	194.0	2.0	0.29						

Newcore Gold Ltd. | Enchi Gold Project

2020 - 2021 Drill Results

Table accompanies news release dated December 15, 2021



Hole ID	Zone/Deposit	From (m)	To (m)	Length (m)	Au (g/t)	UTM East	UTM North	Elevation	Azimuth °	Dip °	Hole Length (m)
KKRC058	Kwakyekrom	70.0	72.0	2.0	0.53	528812	634852	113	298	-60	267
and		78.0	90.0	2.0	0.28						
including		85.0	87.0	2.0	0.45						
and		91.0	92.0	1.0	0.32						
and		105.0	106.0	1.0	0.56						
and		146.0	147.0	1.0	0.33						
and		171.0	174.0	3.0	1.47						
and		179.0	181.0	2.0	0.28						
and		194.0	195.0	1.0	0.39						
and	230.0	232.0	2.0	0.64							
KKRC059	Kwakyekrom	148.0	151.0	3.0	1.13	528776	634792	118	298	-60	276
and		169.0	171.0	2.0	0.50						
and		177.0	184.0	7.0	0.63						
and		217.0	218.0	1.0	1.63						
KKRC060	Kwakyekrom	148.0	156.0	8.0	0.66	528710	634749	127	298	-60	234
and		168.0	177.0	9.0	0.71						
and		189.0	190.0	1.0	1.41						
KKRC061C	Kwakyekrom	154.0	156.0	2.0	0.45	528696	634718	117	298	-60	210
KKRC062	Kwakyekrom	no significant results				528326	634188	167	298	-60	107
KKRC063	Kwakyekrom	86.0	89.0	3.0	0.44	528364	634167	169	298	-60	186
and		123.0	124.0	1.0	0.51						
and		154.0	155.0	1.0	0.78						
KKRC064	Kwakyekrom	84.0	85.0	1.0	0.61	528384	633885	129	298	-60	144
and		114.0	123.0	9.0	0.50						
KKRC065	Kwakyekrom	94.0	105.0	11.0	0.90	528409	633870	123	298	-60	200
and		141.0	144.0	3.0	0.64						
KJRC011	Kojina Hill	no significant results				528887	637281	110	300	-65	170
KJRC012	Kojina Hill	218.0	222.0	4.0	1.34	528887	637281	110	300	-75	252
and		229.0	230.0	1.0	0.83						

Newcore Gold Ltd. | Enchi Gold Project

2020 - 2021 Drill Results

Table accompanies news release dated December 15, 2021



Hole ID	Zone/Deposit	From (m)	To (m)	Length (m)	Au (g/t)	UTM East	UTM North	Elevation	Azimuth °	Dip °	Hole Length (m)
KJRC013	Kojina Hill	6.0	13.0	7.0	0.33	528897	637243	123	300	-60	170
and		83.0	113.0	30.0	0.39						
including		83.0	91.0	8.0	0.51						
and incl.		94.0	99.0	5.0	0.56						
and incl.		109.0	113.0	4.0	0.57						
KJRC014	Kojina Hill	57.0	60.0	3.0	0.37	528897	637243	123	300	-75	288
and		209.0	212.0	3.0	0.37						
KJRC015	Kojina Hill	126.0	127.0	1.0	0.40	528867	637240	130	300	-60	192
and		139.0	140.0	1.0	0.42						
KJRC016	Kojina Hill	174.0	175.0	1.0	0.31	528871	637239	127	300	-75	252
and		208.0	209.0	1.0	0.30						
and		244.0	246.0	2.0	0.33						
KJRC017	Kojina Hill	108.0	112.0	4.0	0.86	528838	637203	149	300	-65	162
and		119.0	122.0	3.0	0.28						
and		125.0	145.0	20.0	1.09						
including		125.0	129.0	4.0	2.52						
and		155.0	156.0	1.0	0.47						
KJRC018	Kojina Hill	48.0	50.0	2.0	0.30	528860	637219	141	300	-65	150
and		98.0	102.0	4.0	0.68						
KJRC019	Kojina Hill	81.0	89.0	8.0	0.50	528871	637239	129	270	-70	282
and		121.0	122.0	1.0	0.60						
KJRC020	Kojina Hill	67.0	69.0	2.0	0.44	528805	637400	97	120	-55	90
KJRC021	Kojina Hill		no significant results			528774	637413	88	120	-55	132
KJRC022	Kojina Hill	2.0	3.0	1.0	0.62	528789	637334	113	120	-55	120
and		44.0	49.0	5.0	1.68						
and		61.0	120.0	59.0	0.79						
including		80.0	90.0	10.0	3.03						

Newcore Gold Ltd. | Enchi Gold Project

2020 - 2021 Drill Results

Table accompanies news release dated December 15, 2021



Hole ID	Zone/Deposit	From (m)	To (m)	Length (m)	Au (g/t)	UTM East	UTM North	Elevation	Azimuth °	Dip °	Hole Length (m)
KJRC023	Kojina Hill			no significant results		528766	637358	64	120	-55	168
KJRC024	Kojina Hill	86.0	100.0	14.0	0.87	528786	637377	107	120	-55	160
and		117.0	132.0	15.0	1.44						

1. Intervals reported are hole lengths with true width estimated to be 75 - 85%.
2. Length-weighted averages from uncut assays.
3. All drilling completed by independent contractor.
4. All drilling samples sealed on site and delivered directly to independent lab Intertek Mineral Limited located in Tarkwa, Ghana for preparation and 50g Fire Assay with AAS finish.
5. QA/QC procedures include industry standard inclusion of standards, blanks, and duplicates in all sample batches.