



NEWS RELEASE

Newcore Gold Makes Two New Greenfield Discoveries at its Enchi Gold Project, Ghana

*Newcore Gold Drilling Intersects 3.52 g/t Gold over 9.0 Metres, including
7.36 g/t Gold over 4.0 Metres at the Tokosea Gold Target*

March 7, 2022

TSX-V: NCAU, OTCQX: NCAUF

Vancouver, BC - Newcore Gold Ltd. ("Newcore" or the "Company") (TSX-V: NCAU, OTCQX: NCAUF) is pleased to announce two new gold discoveries from the 90,000 metre drill program underway at the Company's 100% owned Enchi Gold Project ("Enchi" or the "Project") in Ghana. First pass Reverse Circulation ("RC") drilling on two grassroots targets, Tokosea and Sewum South, intersected shallow oxide gold mineralization demonstrating the strong potential to delineate additional resource areas across the 216 km² property. Drilling at Tokosea (located on the central portion of Enchi) intersected shallow high-grade oxide gold mineralization grading 3.52 grams per tonne gold ("g/t Au") over 9.0 metres ("m") from 74 m, including 7.36 g/t Au over 4.0 m from 77 m. Drilling at Sewum South (located at the southern end of Enchi, one of the largest previously undrilled targets identified on the Project) intersected 0.95 g/t Au over 15.0 m from 25 m, including 2.31 g/t Au over 5.0 m from 25 m.

Highlights from First Pass Drilling at Tokosea and Sewum South

- **Both Tokosea (central portion of Enchi) and Sewum South (southern end of Enchi) are previously undrilled gold targets with very large anomalous areas identified.**
 - First pass discovery drilling at Sewum South and Tokosea tested gold mineralization to an average depth of only 75 metres.
 - The Tokosea and Sewum South gold targets are each outlined on surface by a six-kilometre-long and two-to-three-kilometre-wide gold-in-soil anomaly.
 - Awaiting assays from an additional 30 RC drill holes completed at Tokosea.
- **Drilling at Tokosea intersected near surface oxidized gold mineralization, including:**
 - Hole TORC025 intersected two mineralized zones, 3.52 g/t Au over 9.0 m from 74 m, including 7.36 g/t Au over 4.0 m from 77 m in the lower zone, and 1.15 g/t Au over 3.0 m from 3 m in the upper zone.
 - Hole TORC012 intersected 0.51 g/t Au over 27.0 m from 4 m, including 1.92 g/t Au over 5.0 m from 23 m.
- **Drilling at Tokosea also intersected gold mineralization to depth, into the upper portion of the sulphide mineralization, with results including:**
 - Hole TORC012 intersected a second structure in the sulphides with 1.73 g/t Au over 6.0 m from 125 m, including 4.35 g/t Au over 2.0 m from 125 m.
 - Hole TORC020 intersected 0.90 g/t Au over 12.0 m from 74 m, including 4.55 g/t Au over 2.0 m from 76 m.

- **Drilling at Sewum South intersected multiple gold mineralized zones, including higher grade core structures:**
 - Hole SWRC130 intersected 0.95 g/t Au over 15.0 m from 25 m, including 2.31 g/t Au over 5.0 m from 25 m and a second zone of 1.50 g/t Au over 4.0 m from 14 m.
 - Hole SWRC121 intersected 0.53 g/t Au over 24.0 m from 54 m, including higher-grade structures of 1.09 g/t Au over 3.0 m from 54 m and 1.61 g/t Au over 2.0 m from 69 m.

Greg Smith, VP Exploration of Newcore stated, "We are thrilled with the success of inaugural drilling on some of the largest gold anomalies we have identified at Enchi. Both drilling at Tokosea and Sewum South, two prospective early-stage targets on the property, have identified several new areas of gold mineralization with strong results in both near surface oxide and sulphide mineralization. This first pass drilling tested gold mineralization to an average vertical depth of only 75 metres and identified a number of mineralized zones with higher-grade core structures with further potential from follow-on drilling along strike and at depth. We have only just scratched the surface of the gold potential at Enchi. The 90,000 metre drill program underway continues to prove out the significant multi-million ounce potential across this district scale property."

Luke Alexander, President and CEO of Newcore stated, "These two new discoveries along with recent results from a parallel structure at Sewum extension accomplish our stated goal of making new greenfield discoveries as part of our multi-pronged exploration approach. These new discoveries complement prior drill results which outlined near surface resource expansion potential along strike at all four of our existing deposits, strong results from drilling at three previously drilled areas, and high-grade intercepts at depth which have outlined the potential for underground resources. These new discoveries are a real testament to our geological team's understanding of the structures at our Enchi Gold Project. We will continue to systematically approach the exploration across the Project with the goal of creating value for all our stakeholders."

This news release reports results for 55 holes totalling 5,698 m, including 26 RC holes totalling 2,848 m (TORC001 to TORC026) targeting the Tokosea Gold Target and 29 RC holes totalling 3,120 m (SWRC114 to SWRC142) targeting the Sewum South Gold Target. 49 of the 55 holes intersected gold mineralization. Both Tokosea and Sewum South are targets at Enchi with no prior drilling.

Select assay results from the 55 holes of the drill program reported in this release are below:

Table 1 - Enchi Gold Project Drill Highlights

Hole ID	Zone/Deposit	From (m)	To (m)	Length (m)	Au (g/t)
TORC025	Tokosea	3.0	6.0	3.0	1.15
and		74.0	83.0	9.0	3.52
including		77.0	81.0	4.0	7.36
TORC012	Tokosea	4.0	31.0	27.0	0.51
including		23.0	28.0	5.0	1.92
and		125.0	131.0	6.0	1.73
including		125.0	127.0	2.0	4.35

Hole ID	Zone/Deposit	From (m)	To (m)	Length (m)	Au (g/t)
TORC007	Tokosea	36.0	67.0	31.0	0.36
including		37.0	45.0	8.0	0.67
and		87.0	113.0	26.0	0.34
TORC020	Tokosea	74.0	86.0	12.0	0.90
including		76.0	78.0	2.0	4.55
TORC016	Tokosea	43.0	54.0	11.0	0.84
including		53.0	54.0	1.0	6.81
SWRC130	Sewum South	14.0	18.0	4.0	1.50
and		25.0	40.0	15.0	0.95
including		25.0	30.0	5.0	2.31
SWRC121	Sewum South	54.0	78.0	24.0	0.53
including		54.0	57.0	3.0	1.09
including		69.0	71.0	2.0	1.61
SWRC131	Sewum South	42.0	50.0	8.0	1.57
SWRC129	Sewum South	19.0	35.0	16.0	0.51
including		19.0	21.0	2.0	1.64
including		30.0	33.0	3.0	0.94

Notes:

1. See detailed table for complete results
2. Intervals reported are hole lengths with true width estimated to be 75 - 85%
3. Length-weighted averages from uncut assays

A property map showing the location of Tokosea and Sewum South can be viewed at:

https://newcoregold.com/site/assets/files/5762/2022_03-enchi-property-target-map-soils-l.pdf

Plan maps showing the drill hole locations can be viewed at:

https://newcoregold.com/site/assets/files/5762/2022_03-ncau-nr-enchi-plan-maps-l.pdf

Cross sections showing drill results and highlights for holes TORC025, TORC012, SWRC130 and SWRC131 can be viewed at:

https://newcoregold.com/site/assets/files/5762/2022_03-ncau-crosssections-l.pdf

A complete list of the 2020 - 2022 drill results released to date, including hole details, can be viewed at:

https://newcoregold.com/site/assets/files/5762/2022_03-ncau-enchi-2020-2022-drill-results-l.pdf

For the total planned 90,000 metre drill program, assay results have now been received and released for 493 holes representing 79,175 metres.

Drilling at Tokosea

Tokosea is a large, previously undrilled gold target at Enchi, located in the central portion of the property to the north of the Sewum Gold Deposit. Tokosea is outlined on surface by a six-kilometre-long and two-to-three-kilometre-wide gold-in-soil anomaly. First pass drilling at Tokosea consisted of 26 RC holes totalling 2,848 m (TORC001 to TORC026) designed to test

gold-in-soil and trench anomalies. The wide spaced drilling tested several targets within a four-kilometre-by-two-kilometre area, with 23 of the 26 holes intersecting gold mineralization.

A total of 12 holes (TORC010 to TORC016, TORC022 to TORC026) tested a strike length of 1.75 km of the central structure within the anomalous area at Tokosea, including an area associated with historic artisanal open pit and underground workings. Additional structures have been identified west, east, and north of the central structure.

Drilling intersected mineralization within both the oxide and sulphide zones. Hole TORC025 completed on the northern end of the drill tested area at Tokosea intersected two mineralized zones in the oxides, 3.52 g/t Au over 9 m from 74 m, including 7.36 g/t Au over 4 m from 77 m in the lower oxidized zone, with an additional intercept of 1.15 g/t Au over 3 m from 3 m in the upper oxidized zone. On the same section, hole TORC026 collared 75 metres west of TORC025 intersected the down dip continuation of the upper zone (from TORC025) with 0.52 g/t Au over 11 m from 43 m, including 2.88 g/t Au over 1 m from 45 m and the down dip extension of the lower zone with 1.36 g/t Au over 2 m from 87 m.

Drilling on the central portion of the anomaly included hole TORC016 collared one kilometre to the south of TORC025 (on the same structure) which intersected 0.84 g/t Au over 11 m from 43 m, including 6.81 g/t Au over 1 m from 53 m in oxide mineralization. Hole TORC012 collared 500 m to the south of TORC016 intersected 0.51 g/t Au over 27 m from 4 m, including 1.92 g/t Au over 5 m from 23 m in the oxides along with a lower zone in the sulphides of 1.73 g/t Au over 6 m from 125 m including 4.35 g/t Au over 2 m from 125 m.

A total of 9 holes (TORC001 to TORC009) tested a series of subparallel structures on the western portion of the anomaly at Tokosea. Up to five separate mineralized structures occur across a 200-metre-wide area located approximately 500 metres west of the central structure. To date the structures have been tested by two sections of holes spaced 200 metres apart. Drill results include three holes intersecting mineralization within the oxide zone: TORC007 with an upper zone of 0.36 g/t Au over 31 m from 36 m, including 0.67 g/t Au over 8 m from 37 m and a lower zone of 0.34 g/t Au over 26 m from 87 m; TORC003 collared 250 m to the north of TORC007 intersected 0.81 g/t Au over 11 m from 38 m including 2.73 g/t Au over 2 m from 44 m; and TORC008 collared 200 m to the west (on a sub-parallel structure) of TORC003 intersected 0.34 g/t Au over 18 m from 33 m and 0.81 g/t Au over 11 m from 38 m, including 2.73 g/t Au over 2 m from 44 m.

A total of 5 holes (TORC017 to TORC021) tested a structure in the southern portion of Tokosea. The area is possibly the extension of the central structures or an additional sub-parallel zone. Results include three holes intersecting mineralization within the upper portion of the sulphide zone: TORC020 intersected 0.90 g/t Au over 12 m from 74 m, including 4.55 g/t Au over 2 m from 76 m; TORC021 collared 100 m to the south of TORC020 intersected 1.30 g/t Au over 5 m from 72 m, including 4.17 g/t Au over 1 m from 74 m; and TORC019 collared 150 m to the south of TORC021 intersected 0.87 g/t Au over 7 m from 84 m.

Drilling continues at Tokosea, with additional assay results pending for 30 drill holes.

Drilling at Sewum South

Sewum South is one of the largest previously undrilled gold anomalies identified at Enchi, with the target located at the southern end of the property. Sewum South is outlined on surface by a six-kilometre-long and two-to-three-kilometre-wide gold-in-soil anomaly. First pass drilling at Sewum South consisted of 29 RC holes totalling 3,120 m (SWRC114 to SWRC142) designed to test gold-in-soil and trench anomalies. The wide spaced drilling tested several targets within a

three-kilometre-by-two-kilometre area, with 26 of the 29 holes drilled intersecting gold mineralization.

Drilling intersected mineralization within both the oxide and sulphide zones. Hole SWRC130 collared in the central portion of the Sewum South Target intersected 0.95 g/t Au over 15 m from 25 m, including 2.31 g/t Au over 5 m from 25 m and a second zone of 1.50 g/t Au over 4 m from 14 m. On the same section, hole SWRC131 collared 50 metres east of SWRC130 intersected the down dip continuation of the zone with 1.57 g/t Au over 8 m from 42 m. Hole SWRC129, collared 75 metres west of SWRC130, intersected a sub-parallel structure with 0.51 g/t Au over 16 m from 19 m, including 1.64 g/t Au over 2 m from 19 m and 0.94 g/t Au over 3 m from 30 m. Hole SWRC121, collared 500 metres south of SWRC130 targeted the strike extension of the mineralized structures, intersected 0.53 g/t Au over 24 m from 54 m including 1.09 g/t Au over 3 m from 54 m and 1.61 g/t Au over 2 m from 69 m.

Additional drilling has highlighted the potential for additional mineralization across this prospective target area. Hole SWRC118, collared one kilometre south of SWRC121 and the hole drilled the furthest south on the target, intersected a mineralized zone with multiple structures interpreted to be approximately 400 to 500 metres east of the main structure at Sewum. Additional strong results from the southernmost holes drilled at the Sewum South target include hole SWRC117, collared 75 metres east of SWRC118, which intersected 0.75 g/t Au over 6 m from 20 m, and hole SWRC115, collared 400 metres north of SWRC118, which intersected 0.97 g/t Au over 3 m from 61 m.

Enchi Gold Project Mineral Resource Estimate

The Enchi Gold Project hosts a pit constrained Inferred Mineral Resource of 70.4 million tonnes grading 0.62 g/t Au containing 1.41 million ounces gold (see Newcore news release dated [June 8, 2021](#)). Mineral resource estimation practices are in accordance with CIM Estimation of Mineral Resource and Mineral Reserve Best Practice Guidelines (November 29, 2019) and follow CIM Definition Standards for Mineral Resources and Mineral Reserves (May 10, 2014), that are incorporated by reference into National Instrument 43-101 ("NI 43-101"). The Mineral Resource Estimate was prepared by independent qualified person Todd McCracken, P. Geo. of BBA E&C Inc. The technical report, titled "Preliminary Economic Assessment for the Enchi Gold Project, Enchi, Ghana" has an effective date of June 8, 2021, and is available under the Company's profile on SEDAR at www.sedar.com.

2020 - 2022 Enchi Drilling Program

A 90,000 metre discovery and resource expansion drilling program is underway at Enchi (anticipated completion in Q2 2022). The program includes both RC and diamond drilling and includes the first deeper drilling on the Project. This drill program includes testing extensions of the existing resource areas while also testing a number of high priority exploration targets outside of the Inferred Mineral Resource. Drilling is focused on step out extensions and exploration drilling at the Sewum, Boin, Nyam and Kwakyekrom Deposits. Additional drilling is also focused on previously drilled zones that are outside of the resource area (Kojina Hill and Eradi), along with first pass drilling to test a series of kilometre-scale gold-in-soil anomalous zones with no prior drilling (Sewum South, Tokosea and Nkwanta). All zones represent high priority targets based on geological, geochemical and geophysical surface work and previous trenching and drilling.

Tokosea Gold Target

The Tokosea Target is located in the central portion of the Enchi Gold Project and is one of the largest anomalous areas with gold-in-soil and associated geophysical anomalies. Tokosea is located 15 kilometres southeast of the town of Enchi, with nearby roads and power and further access provided by a series of drill roads. Tokosea is outlined on surface by a six-kilometre-long and two to three-kilometre-wide gold-in-soil anomaly. An airborne geophysical anomaly coincident with the area defines a series of sub-parallel and intersecting structures. Historic artisanal small scale open pit and underground mining has occurred on individual structures dating as far back as the early 20th century. The area was untested by drilling prior to the current drill program. As part of the current drill program results have been received and released for 26 RC holes totalling 2,848 metres.

Sewum South Gold Target

The Sewum South Target is located at the southern end of the Enchi Gold Project and is one of the largest undrilled anomalous areas on the Project. Sewum South is located 15 kilometres south of the town of Enchi, with nearby roads and power and further access provided by a series of drill roads. The area is one-to-two kilometres south and east of the Sewum Deposit. Sewum South is outlined on surface by a six-kilometre-long and two to three-kilometre-wide gold-in-soil anomaly. An airborne geophysical anomaly coincident with the area defines a series of sub-parallel and intersecting structures. The area was untested by drilling prior to the current drill program. As part of the current drill program results have been received and released for 29 RC holes totalling 3,120 metres.

Drill Hole Locations

Table 2 - Enchi Gold Project Drill Hole Location Details

Hole ID	UTM East	UTM North	Elevation	Azimuth °	Dip °	Length (m)
TORC001	522718	629843	117	120	-50	96
TORC002	522659	629877	127	120	-50	100
TORC003	522604	629911	144	120	-50	100
TORC004	522562	629719	123	120	-50	100
TORC005	522499	629747	126	120	-50	100
TORC006	522342	629817	126	120	-50	102
TORC007	522290	629847	120	120	-50	114
TORC008	522436	629991	129	120	-50	102
TORC009	522369	630029	119	120	-50	126
TORC010	522776	629274	117	120	-50	100
TORC011	522732	629213	107	120	-50	114
TORC012	522650	629254	134	120	-50	132
TORC013	522866	629373	120	120	-50	130
TORC014	522992	629514	147	120	-50	114
TORC015	522795	629414	118	120	-50	102
TORC016	523092	629680	120	120	-50	100
TORC017	522648	628835	122	120	-50	120
TORC018	522502	628681	111	120	-50	102

Hole ID	UTM East	UTM North	Elevation	Azimuth °	Dip °	Length (m)
TORC019	522423	628718	121	120	-50	102
TORC020	522566	628880	157	120	-50	138
TORC021	522477	628821	137	120	-50	108
TORC022	523036	629482	161	120	-50	108
TORC023	523241	630315	134	120	-50	114
TORC024	523838	630705	136	120	-50	108
TORC025	523959	630632	141	120	-50	108
TORC026	523893	630671	133	120	-50	108
SWRC114	518581	624633	105	114	-55	114
SWRC115	518542	624660	112	114	-55	120
SWRC116	518887	624432	81	114	-55	102
SWRC117	518414	624361	110	114	-55	102
SWRC118	518336	624390	108	114	-55	114
SWRC119	519546	625004	87	114	-55	100
SWRC120	519485	625030	88	114	-55	102
SWRC121	518704	625382	141	114	-55	108
SWRC122	518905	625299	101	114	-55	100
SWRC123	519390	625078	87	114	-55	102
SWRC124	518975	626583	208	114	-55	102
SWRC125	519047	626547	198	114	-55	100
SWRC126	519141	626508	137	114	-55	102
SWRC127	519245	626465	108	114	-55	114
SWRC128	518657	625888	211	114	-55	120
SWRC129	518726	625859	178	114	-55	100
SWRC130	518791	625819	145	114	-55	102
SWRC131	518836	625800	134	294	-50	100
SWRC132	518918	626183	167	114	-55	100
SWRC133	518991	626151	120	114	-55	100
SWRC134	519146	625649	132	294	-50	102
SWRC135	519082	625670	120	294	-50	102
SWRC136	519063	625680	123	114	-55	102
SWRC137	520106	626951	109	114	-50	102
SWRC138	520028	626992	111	114	-50	100
SWRC139	519963	627038	101	114	-50	108
SWRC140	519324	626827	130	114	-55	100
SWRC141A	518947	625742	193	114	-50	200
SWRC142	518986	625727	162	114	-55	100

COVID-19 Protocols

Newcore's first priority is the health and safety of all employees, contractors, and local communities. The Company is following all Ghana guidelines and requirements related to COVID-19. The Company has implemented COVID-19 protocols for its ongoing drill program

consisting of the mandatory use of personal protective equipment (including facemasks for all employees), maintaining social distancing, frequent hand washing, and daily temperature checks at the start of each shift.

Newcore Gold Best Practice

Newcore is committed to best practice standards for all exploration, sampling and drilling activities. Drilling was completed by an independent drilling firm using industry standard RC and Diamond Drill equipment. Analytical quality assurance and quality control procedures include the systematic insertion of blanks, standards and duplicates into the sample strings. Samples are placed in sealed bags and shipped directly to Intertek Labs located in Tarkwa, Ghana for 50 gram gold fire assay.

Qualified Person

Mr. Gregory Smith, P. Geo, Vice President of Exploration of Newcore, is a Qualified Person as defined by NI 43-101, and has reviewed and approved the technical data and information contained in this news release. Mr. Smith has verified the technical and scientific data disclosed herein and has conducted appropriate verification on the underlying data including confirmation of the drillhole data files against the original drillhole logs and assay certificates.

About Newcore Gold Ltd.

Newcore Gold is advancing its Enchi Gold Project located in Ghana, Africa's largest gold producer⁽¹⁾. The Project currently hosts an Inferred Mineral Resource of 1.41 million ounces of gold at 0.62 g/t⁽²⁾. Newcore Gold offers investors a unique combination of top-tier leadership, who are aligned with shareholders through their 27% equity ownership, and prime district scale exploration opportunities. Enchi's 216 km² land package covers 40 kilometres of Ghana's prolific Bibiani Shear Zone, a gold belt which hosts several 5 million-ounce gold deposits, including Kinross' Chirano mine 50 kilometers to the north. Newcore's vision is to build a responsive, creative and powerful gold enterprise that maximizes returns for shareholders.

On Behalf of the Board of Directors of Newcore Gold Ltd.

Luke Alexander
President, CEO & Director

For further information, please contact:

Mal Karwowska | Vice President, Corporate Development and Investor Relations
+1 604 484 4399
info@newcoregold.com
www.newcoregold.com

(1) Source: Production volumes for 2020 as sourced from the World Gold Council

(2) Notes for Inferred Mineral Resource Estimate:

1. CIM definition standards were followed for the resource estimate.
2. The 2021 resource models used ordinary kriging (OK) grade estimation within a three-dimensional block model with mineralized zones defined by wireframed solids and constrained by pits shell for Sewum, Boin and Nyam. Kwakyekrom used Inverse Distance squared (ID2).
3. A base cut-off grade of 0.2 g/t Au was used with a capping of gold grades varied by deposit and zone.

4. A US\$1,650/ounce gold price, open pit with heap leach operation was used to determine the cut-off grade of 0.2 g/t Au. Mining costs of US\$1.40 for oxides, US\$2.10 for transition, and US\$2.60 for fresh rock per mined tonne and G&A and milling costs of US\$6.83/milled tonne. The Inferred Mineral Resource Estimate is pit constrained.
5. Metallurgical recoveries have been applied to four individual deposits and in each case three material types (oxide, transition, and fresh rock) with average recoveries of 77% for Sewum, 79% for Boin, 60% for Nyam and 72% for Kwakyekrom.
6. A density of 2.20 g/cm³ for oxide, 2.45 g/cm³ for transition, and 2.70 g/cm³ for fresh rock was applied.
7. Optimization pit slope angles varied based on the rock types.
8. Mineral Resources that are not mineral reserves do not have economic viability. Numbers may not add due to rounding.
9. These numbers are from the technical report titled "Preliminary Economic Assessment for the Enchi Gold Project, Enchi, Ghana", with an effective date of June 8, 2021, prepared for Newcore Gold by BBA E&C Inc. in accordance with National Instrument 43-101 *Standards of Disclosure for Mineral Projects* and is available under Newcore's SEDAR profile at www.sedar.com.

Neither the TSX Venture Exchange nor its Regulation Services Provider (as that term is defined in the policies of the TSX Venture Exchange) accepts responsibility for the adequacy or accuracy of this release.

Cautionary Note Regarding Forward-Looking Statements

This news release includes statements that contain "forward-looking information" within the meaning of the applicable Canadian securities legislation ("forward-looking statements"). All statements, other than statements of historical fact, are forward-looking statements and are based on expectations, estimates and projections as at the date of this news release. Any statement that involves discussion with respect to predictions, expectations, beliefs, plans, projections, objectives, assumptions, future events or performance (often, but not always using phrases such as "plans", "expects", "is expected", "budget", "scheduled", "estimates", "forecasts", "intends", "anticipates", or "believes" or variations (including negative variations) of such words and phrases, or state that certain actions, events or results "may", "could", "would", "might" or "will" be taken, occur or be achieved) are not statements of historical fact and may be forward-looking statements. In this news release, forward-looking statements relate, among other things, to: statements about the estimation of mineral resources; results of our ongoing drill campaign, magnitude or quality of mineral deposits; anticipated advancement of mineral properties or programs; and future exploration prospects.

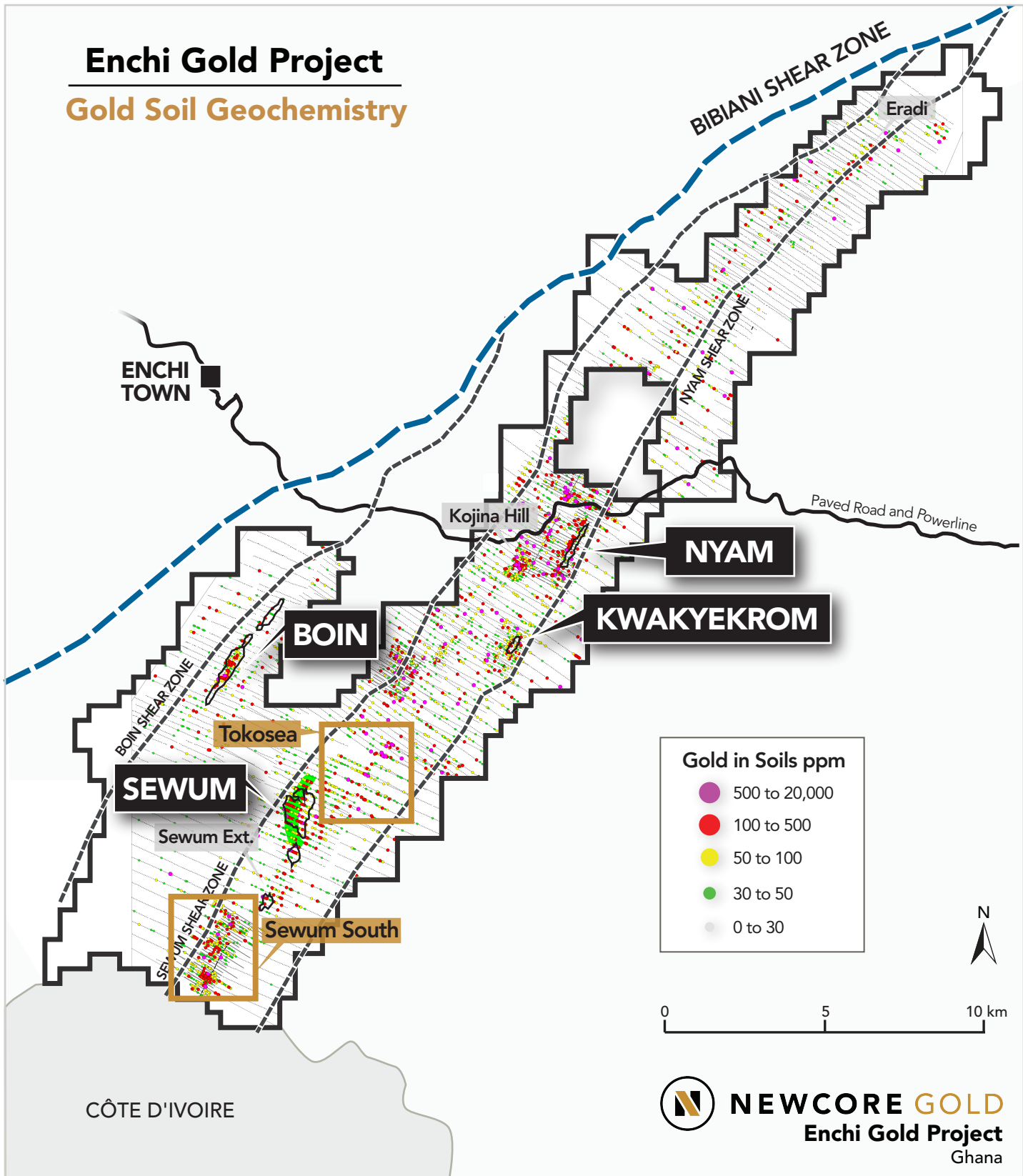
These forward-looking statements, and any assumptions upon which they are based, are made in good faith and reflect our current judgment regarding the direction of our business. The assumptions underlying the forward-looking statements are based on information currently available to Newcore. Although the forward-looking statements contained in this news release are based upon what management of Newcore believes, or believed at the time, to be reasonable assumptions, Newcore cannot assure its shareholders that actual results will be consistent with such forward-looking statements, as there may be other factors that cause results not to be as anticipated, estimated or intended. Forward-looking information also involves known and unknown risks, uncertainties and other factors which may cause the actual results, performance or achievements of the Company to be materially different from any future results, performance or achievements expressed or implied by the forward-looking information. Such factors include, among others: risks related to the speculative nature of the Company's business; the Company's formative stage of development; the Company's financial position; possible variations in mineralization, grade or recovery rates; actual results of current exploration activities; fluctuations in general macroeconomic conditions; fluctuations in securities markets; fluctuations in spot and forward prices of gold and other commodities; fluctuations in currency markets (such as the Canadian dollar to United States dollar exchange rate); change in national and local government, legislation, taxation, controls, regulations and political or economic developments; risks and hazards associated with the business of mineral exploration, development and mining (including environmental hazards, unusual or unexpected geological formations); the presence of laws and regulations that may impose restrictions on mining; employee relations; relationships with and claims by local communities; the speculative

nature of mineral exploration and development (including the risks of obtaining necessary licenses, permits and approvals from government authorities); and title to properties.

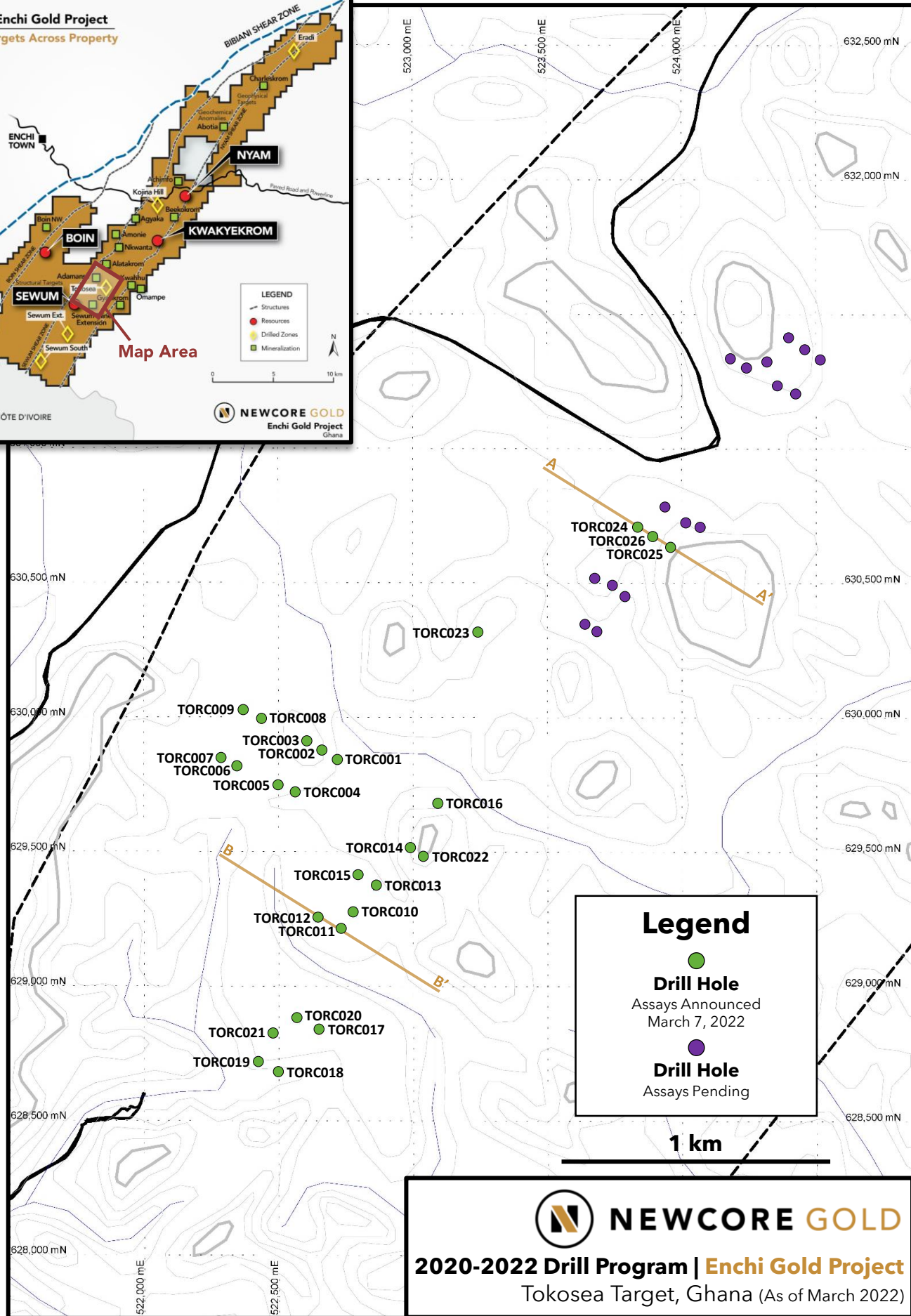
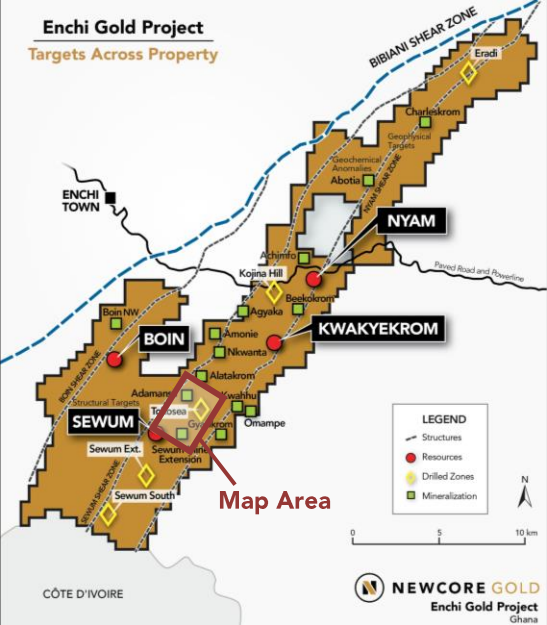
Forward-looking statements contained herein are made as of the date of this news release and the Company disclaims any obligation to update any forward-looking statements, whether as a result of new information, future events or results, except as may be required by applicable securities laws. There can be no assurance that forward-looking information will prove to be accurate, as actual results and future events could differ materially from those anticipated in such statements. Accordingly, readers should not place undue reliance on forward-looking information.

Enchi Gold Project

Gold Soil Geochemistry



Enchi Gold Project
Targets Across Property



Legend

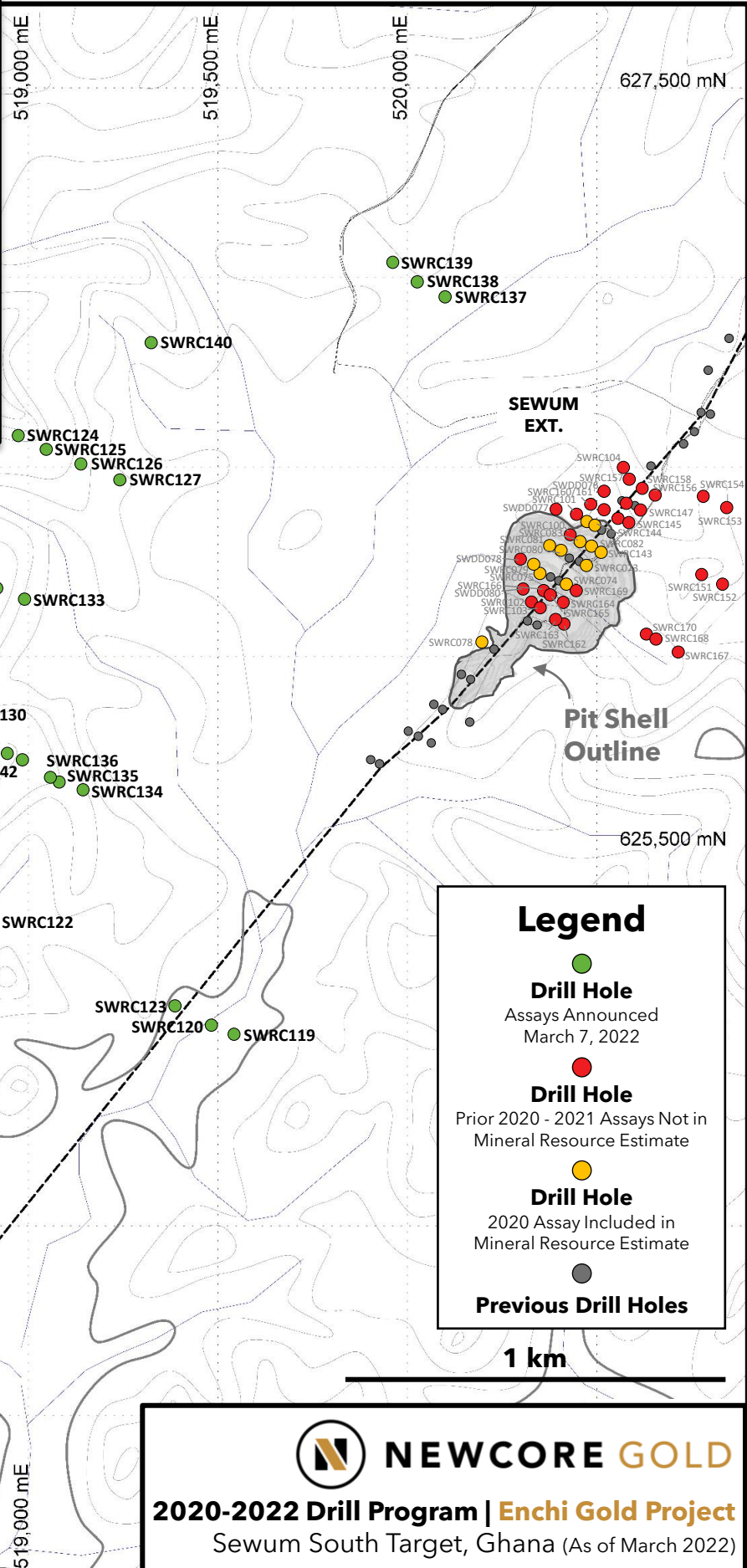
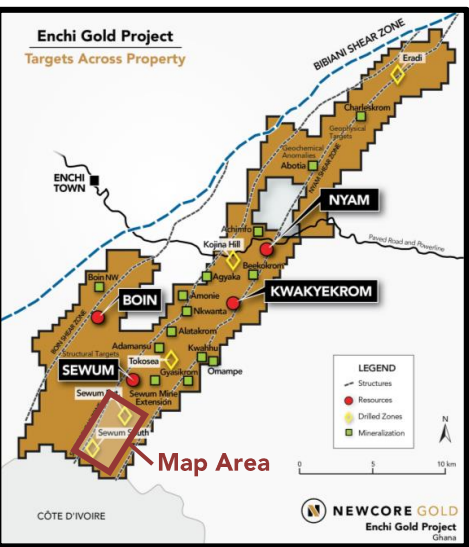
- **Drill Hole**
Assays Announced
March 7, 2022
- **Drill Hole**
Assays Pending



NEWCORE GOLD

2020-2022 Drill Program | Enchi Gold Project
Tokosea Target, Ghana (As of March 2022)

Enchi Gold Project
Targets Across Property



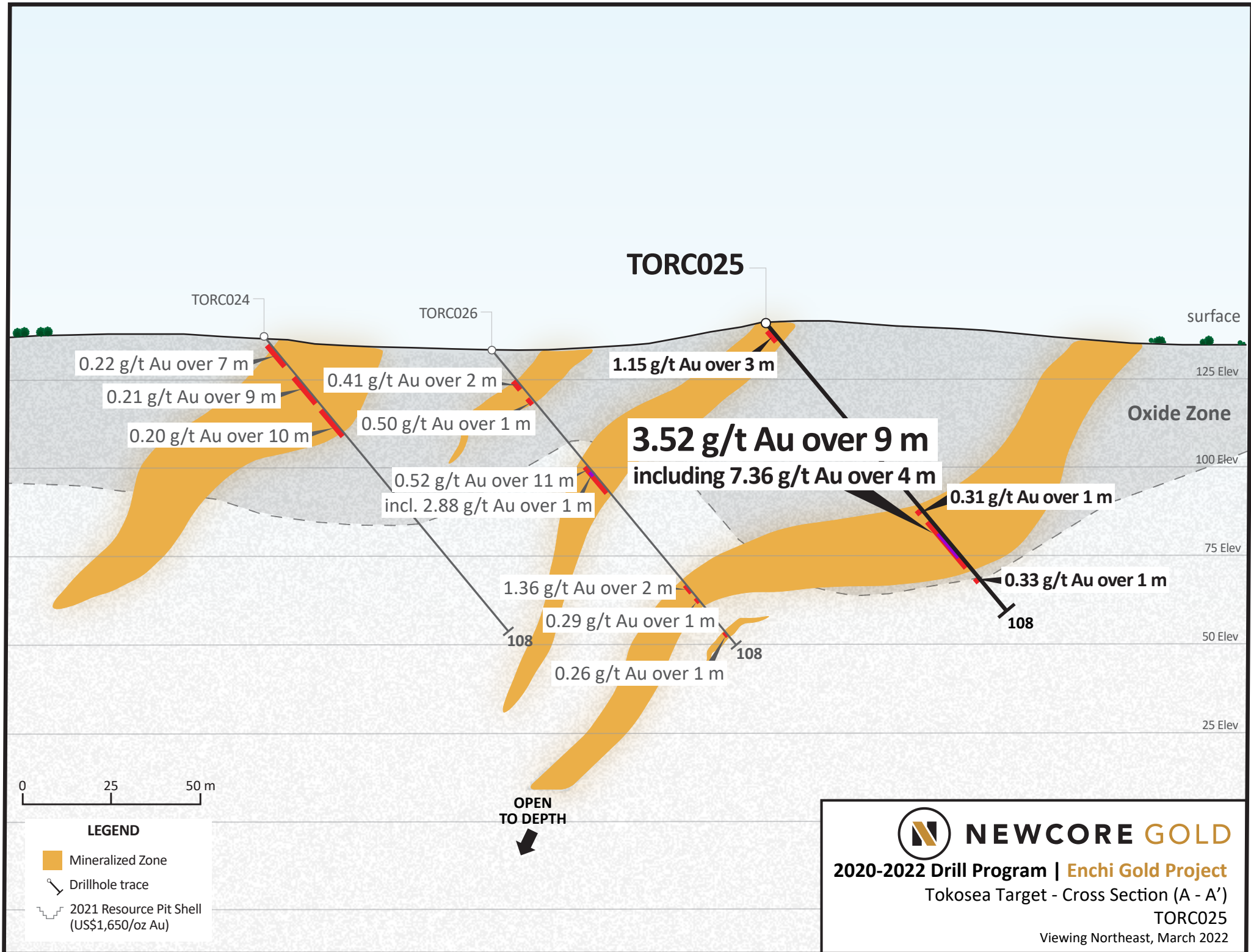
Legend

- **Drill Hole**
Assays Announced
March 7, 2022
- **Drill Hole**
Prior 2020 - 2021 Assays Not in
Mineral Resource Estimate
- **Drill Hole**
2020 Assay Included in
Mineral Resource Estimate
- **Previous Drill Holes**

1 km



2020-2022 Drill Program | Enchi Gold Project
Sewum South Target, Ghana (As of March 2022)



TORC012

surface

0.51 g/t Au over 27 m
including 1.92 g/t Au over 5 m

Oxide Zone

0.40 g/t Au over 1 m

TORC011

0.20 g/t Au over 9 m

0.34 g/t Au over 6 m

0.42 g/t Au over 3 m

0.36 g/t Au over 3 m

0.57 g/t Au over 3 m

1.73 g/t Au over 6 m
including 4.35 g/t Au over 2 m

132

114

100 Elev

75 Elev

50 Elev

25 Elev

0 Elev

0 25 50 m

OPEN
TO DEPTH



NEWCORE GOLD

2020-2022 Drill Program | Enchi Gold Project

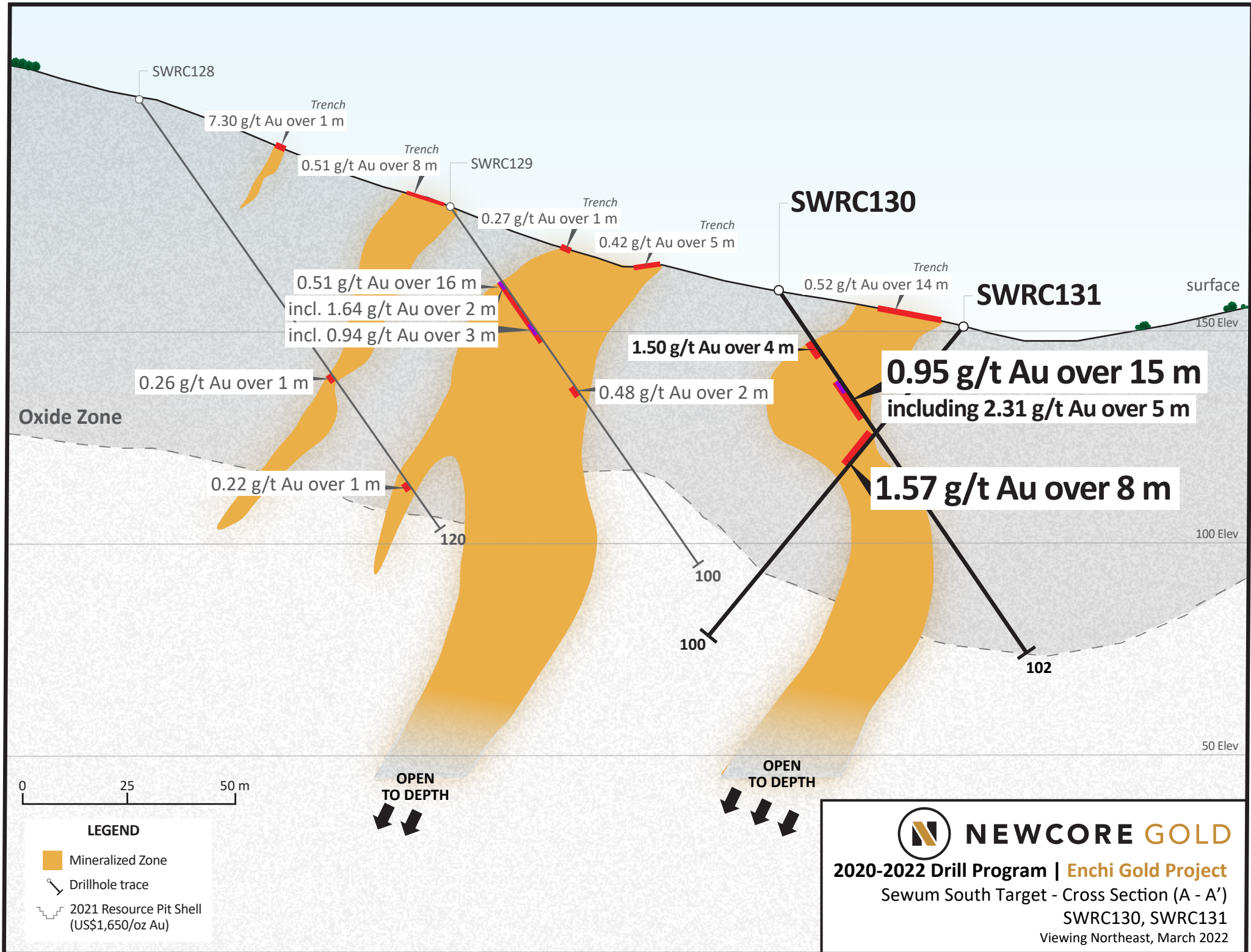
Tokosea Target - Cross Section (B - B')

TORC012

Viewing Northeast, March 2022

LEGEND

- Mineralized Zone
- Drillhole trace
- 2021 Resource Pit Shell (US\$1,650/oz Au)



Newcore Gold Ltd. | Enchi Gold Project

2020 - 2022 Drill Results

Table accompanies news release dated March 7, 2022



Drill Results Released March 7, 2022

Hole ID	Zone/Deposit	From (m)	To (m)	Length (m)	Au (g/t)	UTM East	UTM North	Elevation	Azimuth °	Dip °	Hole Length (m)
TORC001	Tokosea	3.0	7.0	4.0	0.21	522718	629843	117	120	-50	96
and		26.0	27.0	1.0	0.35						
and		67.0	69.0	2.0	0.22						
and		76.0	78.0	2.0	0.33						
and		80.0	82.0	2.0	0.36						
and		87.0	89.0	2.0	0.30						
TORC002	Tokosea	5.0	7.0	2.0	0.20	522659	629877	127	120	-50	100
TORC003	Tokosea	2.0	4.0	2.0	0.58	522604	629911	144	120	-50	100
and		38.0	49.0	11.0	0.81						
including		44.0	46.0	2.0	2.73						
TORC004	Tokosea		no significant results			522562	629719	123	120	-50	100
TORC005	Tokosea		no significant results			522499	629747	126	120	-50	100
TORC006	Tokosea	35.0	36.0	1.0	0.21	522342	629817	126	120	-50	102
TORC007	Tokosea	32.0	33.0	1.0	0.40	522290	629847	120	120	-50	114
and		36.0	67.0	31.0	0.36						
including		37.0	45.0	8.0	0.67						
and		77.0	79.0	2.0	0.40						
and		87.0	113.0	26.0	0.34						
TORC008	Tokosea	12.0	13.0	1.0	0.45	522436	629991	129	120	-50	102
and		22.0	23.0	1.0	0.29						
and		25.0	26.0	1.0	0.52						
and		33.0	51.0	18.0	0.34						
including		43.0	46.0	3.0	0.79						
and		71.0	72.0	1.0	0.66						
and		79.0	80.0	1.0	0.80						

Newcore Gold Ltd. | Enchi Gold Project

2020 - 2022 Drill Results

Table accompanies news release dated March 7, 2022



Hole ID	Zone/Deposit	From (m)	To (m)	Length (m)	Au (g/t)	UTM East	UTM North	Elevation	Azimuth °	Dip °	Hole Length (m)
TORC009	Tokosea	1.0	9.0	8.0	0.41	522369	630029	119	120	-50	126
and		50.0	61.0	11.0	0.23						
and		71.0	72.0	1.0	1.01						
and		111.0	112.0	1.0	0.36						
and		117.0	120.0	3.0	0.44						
TORC010	Tokosea	9.0	13.0	4.0	0.20	522776	629274	117	120	-50	100
and		17.0	21.0	4.0	0.34						
and		38.0	59.0	21.0	0.30						
including		55.0	56.0	1.0	1.44						
and		71.0	78.0	7.0	0.35						
TORC011	Tokosea	20.0	29.0	9.0	0.20	522732	629213	107	120	-50	114
and		51.0	57.0	6.0	0.34						
and		71.0	74.0	3.0	0.57						
TORC012	Tokosea	4.0	31.0	27.0	0.51	522650	629254	134	120	-50	132
including		23.0	28.0	5.0	1.92						
and		43.0	44.0	1.0	0.40						
and		104.0	107.0	3.0	0.42						
and		112.0	115.0	3.0	0.36						
and		125.0	131.0	6.0	1.73						
including		125.0	127.0	2.0	4.35						
TORC013	Tokosea	31.0	37.0	6.0	0.38	522866	629373	120	120	-50	130
including		33.0	34.0	1.0	1.51						
and		70.0	71.0	1.0	0.46						
and		88.0	90.0	2.0	0.45						
and		103.0	108.0	5.0	0.73						

Newcore Gold Ltd. | Enchi Gold Project

2020 - 2022 Drill Results

Table accompanies news release dated March 7, 2022



Hole ID	Zone/Deposit	From (m)	To (m)	Length (m)	Au (g/t)	UTM East	UTM North	Elevation	Azimuth °	Dip °	Hole Length (m)
TORC014	Tokosea	19.0	20.0	1.0	0.30	522992	629514	147	120	-50	114
and		29.0	31.0	2.0	0.38						
and		42.0	44.0	2.0	0.53						
and		52.0	56.0	4.0	0.30						
and		75.0	76.0	1.0	0.46						
and		104.0	106.0	2.0	0.31						
TORC015	Tokosea	96.0	97.0	1.0	0.29	522795	629414	118	120	-50	102
TORC016	Tokosea	26.0	27.0	1.0	1.83	523092	629680	120	120	-50	100
and		43.0	54.0	11.0	0.84						
including		53.0	54.0	1.0	6.81						
and		61.0	67.0	6.0	0.39						
TORC017	Tokosea	51.0	52.0	1.0	0.33	522648	628835	122	120	-50	120
and		61.0	62.0	1.0	0.38						
TORC018	Tokosea	4.0	5.0	1.0	0.85	522502	628681	111	120	-50	102
TORC019	Tokosea	26.0	29.0	3.0	0.67	522423	628718	121	120	-50	102
and		84.0	91.0	7.0	0.87						
TORC020	Tokosea	74.0	86.0	12.0	0.90	522566	628880	157	120	-50	138
including		76.0	78.0	2.0	4.55						
and		127.0	129.0	2.0	0.93						
TORC021	Tokosea	55.0	57.0	2.0	0.51	522477	628821	137	120	-50	108
and		72.0	77.0	5.0	1.30						
including		74.0	75.0	1.0	4.17						
TORC022	Tokosea	no significant results				523036	629482	161	120	-50	108
TORC023	Tokosea	89.0	90.0	1.0	0.47	523241	630315	134	120	-50	114
and		96.0	98.0	2.0	0.36						
and		108.0	109.0	1.0	0.32						
TORC024	Tokosea	2.0	9.0	7.0	0.22	523838	630705	136	120	-50	108
and		17.0	26.0	9.0	0.21						
and		29.0	39.0	10.0	0.20						

Newcore Gold Ltd. | Enchi Gold Project

2020 - 2022 Drill Results

Table accompanies news release dated March 7, 2022



Hole ID	Zone/Deposit	From (m)	To (m)	Length (m)	Au (g/t)	UTM East	UTM North	Elevation	Azimuth °	Dip °	Hole Length (m)
TORC025	Tokosea	3.0	6.0	3.0	1.15	523959	630632	141	120	-50	108
and		69.0	70.0	1.0	0.31						
and		74.0	83.0	9.0	3.52						
including		77.0	81.0	4.0	7.36						
and		90.0	91.0	1.0	0.33						
TORC026	Tokosea	12.0	14.0	2.0	0.41	523893	630671	133	120	-50	108
and		18.0	19.0	1.0	0.50						
and		43.0	54.0	11.0	0.52						
including		45.0	46.0	1.0	2.88						
and		87.0	89.0	2.0	1.36						
and		91.0	92.0	1.0	0.29						
and		104.0	105.0	1.0	0.26						
SWRC114	Sewum South	54.0	57.0	3.0	0.40	518581	624633	105	114	-55	114
and		107.0	110.0	3.0	0.30						
SWRC115	Sewum South	61.0	64.0	3.0	0.97	518542	624660	112	114	-55	120
SWRC116	Sewum South		no significant results			518887	624432	81	114	-55	102
SWRC117	Sewum South	20.0	26.0	6.0	0.75	518414	624361	110	114	-55	102
SWRC118	Sewum South	9.0	14.0	5.0	0.35	518336	624390	108	114	-55	114
and		20.0	22.0	2.0	0.32						
and		33.0	50.0	17.0	0.31						
including		35.0	38.0	3.0	0.63						
and		72.0	74.0	2.0	0.34						
and		78.0	80.0	2.0	0.48						
and		106.0	107.0	1.0	0.40						
SWRC119	Sewum South	97.0	98.0	1.0	0.82	519546	625004	87	114	-55	100
SWRC120	Sewum South		no significant results			519485	625030	88	114	-55	102
SWRC121	Sewum South	54.0	78.0	24.0	0.53	518704	625382	141	114	-55	108
including		54.0	57.0	3.0	1.09						
including		69.0	71.0	2.0	1.61						

Newcore Gold Ltd. | Enchi Gold Project

2020 - 2022 Drill Results

Table accompanies news release dated March 7, 2022



Hole ID	Zone/Deposit	From (m)	To (m)	Length (m)	Au (g/t)	UTM East	UTM North	Elevation	Azimuth °	Dip °	Hole Length (m)
SWRC122	Sewum South	21.0	23.0	2.0	0.40	518905	625299	101	114	-55	100
SWRC123	Sewum South	29.0	30.0	1.0	0.22	519390	625078	87	114	-55	102
SWRC124	Sewum South	41.0	43.0	2.0	0.81	518975	626583	208	114	-55	102
SWRC125	Sewum South	86.0	92.0	6.0	0.45	519047	626547	198	114	-55	100
SWRC126	Sewum South	21.0	22.0	1.0	0.31	519141	626508	137	114	-55	102
and		29.0	31.0	2.0	0.81						
and		47.0	48.0	1.0	0.36						
and		56.0	61.0	5.0	0.26						
and		66.0	68.0	2.0	0.64						
SWRC127	Sewum South	20.0	21.0	1.0	0.40	519245	626465	108	114	-55	114
SWRC128	Sewum South	80.0	81.0	1.0	0.26	518657	625888	211	114	-55	120
and		111.0	112.0	1.0	0.22						
SWRC129	Sewum South	19.0	35.0	16.0	0.51	518726	625859	178	114	-55	100
including		19.0	21.0	2.0	1.64						
including		30.0	33.0	3.0	0.94						
and		48.0	50.0	2.0	0.48						
SWRC130	Sewum South	14.0	18.0	4.0	1.50	518791	625819	145	114	-55	102
and		25.0	40.0	15.0	0.95						
including		25.0	30.0	5.0	2.31						
SWRC131	Sewum South	42.0	50.0	8.0	1.57	518836	625800	134	294	-50	100
SWRC132	Sewum South	11.0	12.0	1.0	0.32	518918	626183	167	114	-55	100
SWRC133	Sewum South	14.0	24.0	10.0	0.76	518991	626151	120	114	-55	100
including		22.0	23.0	1.0	3.94						
and		35.0	38.0	3.0	0.30						
SWRC134	Sewum South	26.0	27.0	1.0	0.30	519146	625649	132	294	-50	102
SWRC135	Sewum South	11.0	12.0	1.0	0.19	519082	625670	120	294	-50	102
SWRC136	Sewum South	16.0	17.0	1.0	0.47	519063	625680	123	114	-55	102
SWRC137	Sewum South	46.0	47.0	1.0	0.37	520106	626951	109	114	-50	102

Newcore Gold Ltd. | Enchi Gold Project

2020 - 2022 Drill Results

Table accompanies news release dated March 7, 2022



Hole ID	Zone/Deposit	From (m)	To (m)	Length (m)	Au (g/t)	UTM East	UTM North	Elevation	Azimuth °	Dip °	Hole Length (m)
SWRC138	Sewum South	2.0	3.0	1.0	0.2	520028	626992	111	114	-50	100
and		67.0	68.0	1.0	0.3						
SWRC139	Sewum South				no significant results	519963	627038	101	114	-50	108
SWRC140	Sewum South	17.0	18.0	1.0	0.18	519324	626827	130	114	-55	100
and		95.0	96.0	1.0	0.42						
SWRC141A	Sewum South	60.0	62.0	2.0	0.39	518947	625742	193	114	-50	200
SWRC142	Sewum South	30.0	31.0	1.0	0.26	518986	625727	162	114	-55	100

1. Intervals reported are hole lengths with true width estimated to be 75 - 85%.

2. Length-weighted averages from uncut assays.

3. All drilling completed by independent contractor.

4. All drilling samples sealed on site and delivered directly to independent lab Intertek Mineral Limited located in Tarkwa, Ghana for preparation and 50g Fire Assay with AAS finish.

5. QA/QC procedures include industry standard inclusion of standards, blanks, and duplicates in all sample batches.

[SEE NEXT PAGE FOR PREVIOUSLY RELEASED RESULTS]

Newcore Gold Ltd. | Enchi Gold Project

2020 - 2022 Drill Results

Table accompanies news release dated March 7, 2022



Previously Released Drill Results

Hole ID	Zone/Deposit	From (m)	To (m)	Length (m)	Au (g/t)	UTM East	UTM North	Elevation	Azimuth °	Dip °	Hole Length (m)
KBRC138	Boin	92.0	96.0	4.0	1.05	518408	632972	147	114	-60	97
KBRC138A	Boin	133.0	135.0	2.0	0.57	518405	632976	147	114	-60	216
and		146.0	148.0	2.0	0.65						
KBRC139	Boin	1.0	17.0	16.0	0.69	518700	633234	130	120	-60	80
KBRC140	Boin	4.0	7.0	3.0	0.31	519121	633708	155	120	-60	80
and		13.0	14.0	1.0	0.44						
KBRC141	Boin	10.0	21.0	11.0	0.34	519018	633704	156	114	-50	120
and		48.0	95.0	47.0	1.67						
including		49.0	58.0	9.0	2.96						
and incl.		75.0	85.0	10.0	3.63						
KBRC142	Boin	1.0	4.0	3.0	0.27	518558	633239	129	114	-50	156
and		131.0	150.0	19.0	0.43						
including		131.0	142.0	11.0	0.60						
KBRC142B	Boin	121.0	130.0	9.0	0.30	518573	633233	137	114	-50	238
KBRC143	Boin	3.0	17.0	14.0	0.56	519395	634172	120	114	-60	108
KBRC144	Boin	146.0	148.0	2.0	0.51	519378	634178	120	120	-60	150
KBRC145	Boin	48.0	55.0	7.0	0.54	520325	635410	117	120	-60	150
KBRC146	Boin	7.0	10.0	3.0	0.24	520456	635619	124	114	-50	100
and		30.0	62.0	32.0	0.92						
including		42.0	54.0	12.0	1.78						
and incl.		59.0	61.0	2.0	0.52						
KBRC147	Boin	50.0	59.0	9.0	0.52	520424	635582	124	114	-50	102
KBRC148	Boin	56.0	58.0	2.0	0.69	520391	635546	122	114	-50	108
and		75.0	77.0	2.0	0.30						

Newcore Gold Ltd. | Enchi Gold Project

2020 - 2022 Drill Results

Table accompanies news release dated March 7, 2022



Hole ID	Zone/Deposit	From (m)	To (m)	Length (m)	Au (g/t)	UTM East	UTM North	Elevation	Azimuth °	Dip °	Hole Length (m)
KBRC149	Boin	38.0	41.0	3.0	0.36	520378	635496	120	114	-50	100
KBRC150	Boin	59.0	94.0	35.0	0.57	520335	635517	125	114	-65	148
including		65.0	91.0	26.0	0.70						
and		130.0	135.0	5.0	0.59						
and		141.0	148.0	7.0	0.42						
KBRC150A	Boin	72.0	74.0	2.0	0.59	520338	635514	122	114	-65	174
and		87.0	108.0	21.0	1.19						
and		136.0	139.0	3.0	1.01						
and		145.0	162.0	17.0	0.44						
KBRC151	Boin	9.0	20.0	11.0	2.30	519349	634402	131	120	-60	156
and		62.0	65.0	3.0	0.63						
and		136.0	144.0	8.0	0.55						
KBRC152	Boin	73.0	74.0	1.0	1.20	519292	634429	117	120	-60	258
and		209.0	213.0	4.0	1.56						
and		234.0	235.0	1.0	2.55						
KBRC153	Boin	7.0	11.0	4.0	0.68	519317	634201	122	120	-60	258
and		28.0	33.0	5.0	0.42						
and		42.0	60.0	18.0	1.21						
and		67.0	71.0	4.0	1.40						
and		110.0	114.0	4.0	0.82						
and		155.0	158.0	3.0	0.33						
and		191.0	194.0	3.0	0.39						
KBRC154	Boin	88.0	95.0	7.0	0.61	519086	633928	157	120	-60	178
and		149.0	152.0	3.0	0.27						
KBRC155	Boin	85.0	89.0	4.0	0.22	518896	633582	155	120	-60	138
and		103.0	105.0	2.0	0.89						
and		118.0	134.0	16.0	0.57						

Newcore Gold Ltd. | Enchi Gold Project

2020 - 2022 Drill Results

Table accompanies news release dated March 7, 2022



Hole ID	Zone/Deposit	From (m)	To (m)	Length (m)	Au (g/t)	UTM East	UTM North	Elevation	Azimuth °	Dip °	Hole Length (m)
KBRC155A	Boin	95.0	97.0	2.0	0.68	518900	633578	163	120	-60	204
and		110.0	113.0	3.0	0.64						
and		127.0	135.0	8.0	0.37						
KBRC156A	Boin	156.0	174.0	18.0	0.69	518480	633164	130	114	-55	270
and		187.0	191.0	4.0	1.20						
KBRC157B	Boin	150.0	162.0	12.0	0.70	518457	633065	128	114	-65	180
KBRC158	Boin	77.0	91.0	14.0	1.41	518379	632992	126	114	-60	260
KBRC159	Boin	178.0	240.0	62.0	0.73	518423	633075	127	114	-65	240
including		187.0	206.0	19.0	1.76						
and incl.		199.0	206.0	7.0	3.18						
KBRC160	Boin		no significant results			518358	632778	124	114	-60	120
KBRC161	Boin	124.0	126.0	2.0	0.37	518330	632898	128	114	-55	200
and		144.0	151.0	7.0	0.36						
and		163.0	166.0	3.0	0.31						
KBRC162	Boin	65.0	69.0	4.0	0.53	518321	632793	120	114	-60	156
and		88.0	91.0	3.0	0.68						
and		101.0	107.0	6.0	1.67						
KBRC163	Boin	11.0	14.0	3.0	0.34	519678	634811	141	114	-60	102
and		27.0	54.0	27.0	1.27						
KBRC164	Boin	19.0	25.0	6.0	1.23	519649	634822	164	114	-60	144
and		102.0	114.0	12.0	0.69						
and		128.0	132.0	4.0	0.47						
KBRC165	Boin	78.0	80.0	2.0	0.41	519895	635045	120	114	-60	102
KBRC166	Boin		no significant results			519886	635049	126	114	-60	140
KBRC167	Boin		no significant results			519836	634974	123	114	-60	120
KBRC168	Boin	1.0	6.0	5.0	0.56	519816	634986	121	114	-60	140

Newcore Gold Ltd. | Enchi Gold Project

2020 - 2022 Drill Results

Table accompanies news release dated March 7, 2022



Hole ID	Zone/Deposit	From (m)	To (m)	Length (m)	Au (g/t)	UTM East	UTM North	Elevation	Azimuth °	Dip °	Hole Length (m)
KBRC169	Boin	55.0	69.0	14.0	1.41	519973	635110	128	114	-60	138
including		62.0	68.0	6.0	2.86						
and		84.0	86.0	2.0	0.53						
and		90.0	92.0	2.0	0.53						
and		125.0	131.0	6.0	0.31						
KBRC170	Boin	45.0	49.0	4.0	0.31	520050	635185	141	114	-60	156
and		70.0	72.0	2.0	0.49						
KBRC171	Boin	77.0	78.0	1.0	1.07	520030	635195	129	114	-60	150
and		119.0	129.0	10.0	0.44						
KBRC172	Boin	2.0	5.0	3.0	0.27	520131	635252	125	114	-60	150
and		78.0	84.0	6.0	0.57						
and		128.0	138.0	10.0	0.92						
KBRC173	Boin	20.0	22.0	2.0	0.28	520105	635265	126	114	-60	186
and		85.0	87.0	2.0	0.76						
and		154.0	158.0	4.0	0.32						
and		166.0	179.0	13.0	0.30						
KBRC174	Boin	91.0	93.0	2.0	0.41	519957	635121	130	114	-60	162
and		153.0	154.0	1.0	0.76						
KBRC175	Boin	67.0	89.0	22.0	0.65	520291	635396	119	114	-60	150
KBRC176	Boin	70.0	77.0	7.0	0.39	520369	635575	130	114	-60	182
and		95.0	105.0	10.0	0.64						
and		130.0	140.0	10.0	0.44						
KBRC177	Boin	81.0	84.0	2.0	0.47	520320	635523	123	114	-65	228
and		108.0	109.0	1.0	0.46						
and		116.0	120.0	4.0	0.81						
and		204.0	206.0	2.0	1.39						
KBRC178	Boin	134.0	140.0	6.0	0.57	520297	635532	117	114	-65	220
		147.0	149.0	2.0	0.90						

Newcore Gold Ltd. | Enchi Gold Project

2020 - 2022 Drill Results

Table accompanies news release dated March 7, 2022



Hole ID	Zone/Deposit	From (m)	To (m)	Length (m)	Au (g/t)	UTM East	UTM North	Elevation	Azimuth °	Dip °	Hole Length (m)
KBRC179	Boin	92.0	97.0	5.0	0.56	520436	635631	133	114	-50	150
KBRC180	Boin	108.0	110.0	2.0	0.33	520415	635637	134	114	-55	170
and		126.0	129.0	3.0	0.47						
KBRC181	Boin	127.0	138.0	11.0	0.45	520393	635648	138	114	-60	216
and		142.0	145.0	3.0	0.29						
and		155.0	162.0	7.0	1.05						
KBRC182	Boin	64.0	68.0	4.0	0.35	520570	635717	137	114	-60	108
and		78.0	82.0	4.0	0.68						
and		87.0	91.0	4.0	0.70						
KBRC183	Boin	93.0	96.0	3.0	0.49	520544	635724	131	114	-60	144
and		105.0	121.0	16.0	0.30						
KBRC184	Boin	86.0	88.0	2.0	0.44	520234	635422	114	114	-60	216
and		102.0	111.0	9.0	0.82						
and		125.0	128.0	3.0	0.45						
and		145.0	166.0	21.0	0.94						
KBRC185	Boin	114.0	116.0	2.0	1.42	530284	634768	135	114	-50	204
and		137.0	204.0	67.0	0.85						
including		137.0	146.0	9.0	2.95						
KBRC186	Boin	102.0	103.0	1.0	0.30	530262	634841	146	114	-60	200
and		138.0	142.0	4.0	0.54						
and		166.0	169.0	3.0	0.32						
KBRC187	Boin	0.0	1.0	1.0	0.56	530200	635099	137	114	-60	132
and		7.0	9.0	2.0	0.30						
and		22.0	24.0	2.0	1.19						
and		102.0	106.0	4.0	0.40						
KBRC188	Boin	6.0	30.0	24.0	0.85	530122	635241	129	114	-60	150
and		46.0	51.0	5.0	0.50						

Newcore Gold Ltd. | Enchi Gold Project

2020 - 2022 Drill Results

Table accompanies news release dated March 7, 2022



Hole ID	Zone/Deposit	From (m)	To (m)	Length (m)	Au (g/t)	UTM East	UTM North	Elevation	Azimuth °	Dip °	Hole Length (m)
KBRC189	Boin	86.0	88.0	2.0	0.37	530142	635433	111	114	-60	200
and		92.0	94.0	2.0	0.51						
and		101.0	103.0	2.0	0.57						
and		121.0	123.0	2.0	0.41						
and		126.0	127.0	1.0	0.78						
and		140.0	142.0	2.0	0.37						
and		148.0	150.0	2.0	0.48						
KBRC190	Boin	103.0	111.0	8.0	0.61	530180	635591	128	114	-60	200
and		119.0	155.0	36.0	1.14						
including		124.0	142.0	18.0	1.72						
KBRC191	Boin	1.0	3.0	2.0	0.48	530297	635707	129	114	-60	100
KBRC192	Boin	116.0	118.0	2.0	0.36	530507	635817	145	114	-60	150
and		124.0	125.0	1.0	0.30						
KBRC193	Boin		no significant results			530909	635870	125	114	-50	100
KBRC194	Boin	4.0	6.0	2.0	0.31	530760	635882	119	114	-60	160
and		12.0	13.0	1.0	0.50						
and		17.0	19.0	2.0	0.46						
and		25.0	26.0	1.0	0.36						
and		102.0	103.0	1.0	0.86						
KBRC195	Boin	111.0	113.0	2.0	0.31	530910	635894	124	114	-70	208
and		145.0	146.0	1.0	0.37						
and		163.0	164.0	1.0	0.58						
KBRC196	Boin		no significant results			531135	635948	114	114	-50	100
KBRC197	Bon	21.0	23.0	2.0	0.54	531161	635960	108	114	-60	150
and		28.0	29.0	1.0	0.32						

Newcore Gold Ltd. | Enchi Gold Project

2020 - 2022 Drill Results

Table accompanies news release dated March 7, 2022



Hole ID	Zone/Deposit	From (m)	To (m)	Length (m)	Au (g/t)	UTM East	UTM North	Elevation	Azimuth °	Dip °	Hole Length (m)
KBRC198	Boin	4.0	8.0	4.0	0.39	531190	635967	107	114	-70	204
and		29.0	32.0	3.0	0.43						
and		36.0	40.0	4.0	0.34						
and		97.0	99.0	2.0	0.39						
and		193.0	194.0	1.0	0.35						
KBRC199	Boin	41.0	46.0	5.0	0.41	531096	636032	112	114	-50	108
KBRC200	Boin	59.0	62.0	3.0	0.67	531120	636055	113	114	-70	200
KBRC201	Boin	84.0	86.0	2.0	0.26	520881	636042	111	114	-60	180
KBRC202	Boin	7.0	8.0	1.0	0.32	518142	632540	136	114	-60	102
KBRC203	Boin	59.0	61.0	2.0	0.29	518113	632554	129	114	-60	150
and		130.0	133.0	3.0	0.32						
KBRC204	Boin	51.0	53.0	2.0	0.26	518036	632382	121	114	-60	102
KBRC205	Boin	12.0	27.0	15.0	0.53	517993	632397	131	114	-60	132
including		13.0	16.0	3.0	1.81						
and		30.0	33.0	3.0	0.31						
and		80.0	82.0	2.0	0.48						
KBRC206	Boin	67.0	69.0	2.0	2.31	517951	632416	125	114	-60	168
KBRC207	Boin	12.0	14.0	2.0	0.32	517815	632238	120	114	-60	108
and		44.0	46.0	2.0	0.40						
KBRC208	Boin	51.0	53.0	2.0	0.30	517778	632254	115	114	-60	105
and		78.0	80.0	2.0	0.21						
and		88.0	89.0	1.0	0.33						
KBRC209	Boin	87.0	90.0	3.0	0.19	517741	632271	115	114	-60	156
KBRC210A	Boin		no significant results			522086	637066	98	114	-60	109
KBRC211	Boin		no significant results			522026	637096	101	114	-60	150
KBRC212	Boin		no significant results			521954	637125	99	114	-60	200
KBRC213	Boin		no significant results			521852	636897	105	114	-60	108
KBRC214	Boin		no significant results			521774	636929	100	114	-60	156

Newcore Gold Ltd. | Enchi Gold Project

2020 - 2022 Drill Results

Table accompanies news release dated March 7, 2022



Hole ID	Zone/Deposit	From (m)	To (m)	Length (m)	Au (g/t)	UTM East	UTM North	Elevation	Azimuth °	Dip °	Hole Length (m)
KBRC215	Boin	89.0	90.0	1.0	0.21	521707	636961	104	114	-60	213
KBRC216	Boin		no significant results			521425	636580	116	114	-60	108
KBRC217	Boin		no significant results			521370	636604	108	114	-60	150
KBRC218	Boin		no significant results			521309	636633	100	114	-60	200
KBRC219	Boin		no significant results			521141	636272	107	114	-60	100
KBRC220	Boin	114.0	116.0	2.0	0.28	521096	636295	107	114	-60	150
KBRC221	Boin		no significant results			521053	636315	107	114	-60	216
KBRC222	Boin	23.0	26.0	3.0	0.40	517464	631646	136	114	-60	120
and		34.0	41.0	7.0	0.45						
and		48.0	53.0	5.0	0.33						
and		59.0	61.0	2.0	0.67						
KBRC223	Boin	75.0	79.0	4.0	0.29	517535	631739	140	114	-60	132
KBRC224	Boin	3.0	4.0	1.0	0.94	517608	631888	113	114	-60	100
and		41.0	42.0	1.0	1.16						
KBRC225	Boin	23.0	25.0	2.0	1.51	517571	631888	118	114	-60	100
and		38.0	40.0	2.0	0.31						
and		70.0	109.0	39.0	0.67						
including		95.0	103.0	8.0	1.60						
KBRC226	Boin	91.0	92.0	1.0	0.63	517690	632085	122	114	-60	100
KBRC227	Boin	84.0	86.0	2.0	0.37	517653	632106	116	114	-60	150
and		95.0	104.0	9.0	0.35						
including		95.0	97.0	2.0	0.69						
KBRC228	Boin	36.0	38.0	2.0	0.33	518290	632705	125	114	-60	100
and		50.0	51.0	1.0	0.40						
and		78.0	84.0	6.0	0.29						
KBRC229	Boin	118.0	133.0	15.0	0.73	518240	632729	127	114	-60	150
KBRC230	Boin		no significant results			518218	632621	126	114	-60	107

Newcore Gold Ltd. | Enchi Gold Project

2020 - 2022 Drill Results

Table accompanies news release dated March 7, 2022



Hole ID	Zone/Deposit	From (m)	To (m)	Length (m)	Au (g/t)	UTM East	UTM North	Elevation	Azimuth °	Dip °	Hole Length (m)
KBRC231	Boin	52.0	54.0	2.0	0.33	518175	632636	120	114	-60	150
and		56.0	57.0	1.0	0.32						
and		103.0	104.0	1.0	0.33						
KBRC232	Boin	8.0	12.0	4.0	0.36	520142	635142	138	114	-60	84
KBRC233	Boin	21.0	27.0	6.0	0.29	520119	635156	135	114	-60	126
and		39.0	43.0	4.0	3.50						
and		63.0	64.0	1.0	0.45						
and		67.0	68.0	1.0	0.31						
KBRC234	Boin	64.0	71.0	7.0	1.25	520035	635082	121	114	-60	114
KBRC235	Boin	40.0	43.0	3.0	1.45	520092	635164	134	114	-60	136
and		55.0	59.0	4.0	1.29						
and		91.0	92.0	1.0	0.46						
and		103.0	107.0	4.0	0.39						
and		123.0	125.0	2.0	0.34						
KBRC236	Boin	13.0	18.0	5.0	1.24	520187	635223	125	114	-60	126
and		55.0	124.0	69.0	0.90						
including		61.0	73.0	12.0	2.06						
KBRC237	Boin	24.0	26.0	2.0	0.59	520246	635295	118	114	-60	100
and		52.0	56.0	4.0	0.46						
KBRC238	Boin	44.0	45.0	1.0	0.46	520218	635313	112	114	-60	150
and		118.0	120.0	2.0	0.41						
KBRC239	Boin	6.0	7.0	1.0	0.37	520333	635374	114	114	-60	100
and		91.0	92.0	1.0	0.71						
KBRC240	Boin	48.0	51.0	3.0	0.69	520334	635433	110	114	-60	100
and		57.0	59.0	2.0	0.28						
and		72.0	73.0	1.0	0.63						

Newcore Gold Ltd. | Enchi Gold Project

2020 - 2022 Drill Results

Table accompanies news release dated March 7, 2022



Hole ID	Zone/Deposit	From (m)	To (m)	Length (m)	Au (g/t)	UTM East	UTM North	Elevation	Azimuth °	Dip °	Hole Length (m)
KBRC241	Boin	18.0	26.0	8.0	0.45	520300	635447	129	114	-60	150
and		34.0	43.0	9.0	1.75						
and		62.0	65.0	3.0	1.36						
and		76.0	112.0	36.0	1.02						
including		95.0	102.0	7.0	2.58						
KBRC242	Boin	6.0	8.0	2.0	0.57	520443	635548	121	114	-60	100
KBRC243	Boin	no significant results				520612	635700	129	114	-60	100
KBRC244	Boin	0.0	1.0	1.0	0.48	518380	632770	126	114	-60	102
and		4.0	11.0	7.0	0.68						
KBRC245	Boin	126.0	132.0	6.0	0.56	520161	635179	94	114	-55	132
KBRC246	Boin	2.0	12.0	10.0	0.74	520216	635206	116	114	-50	108
KBRC247	Boin	9.0	16.0	7.0	0.45	520187	635223	123	114	-65	186
and		70.0	74.0	4.0	0.50						
and		102.0	105.0	3.0	0.56						
KBRC248	Boin	1.0	6.0	5.0	0.45	520285	635280	115	114	-55	156
and		29.0	31.0	2.0	0.25						
KBRC249	Boin	1.0	3.0	2.0	0.32	520309	635327	113	114	-55	132
and		14.0	15.0	1.0	0.31						
KBRC250	Boin	54.0	59.0	5.0	0.28	520273	635345	119	114	-55	138
and		79.0	81.0	2.0	0.30						
and		109.0	111.0	2.0	95.16						
and		111.0	116.0	5.0	0.93						
and		120.0	121.0	1.0	13.22						
and		121.0	127.0	6.0	0.21						
KBRC251	Boin	182.0	187.0	5.0	0.20	520302	635603	130	114	-60	240
KBRC252	Boin	134.0	135.0	1.0	1.86	520512	635737	144	114	-60	207
KBRC253	Boin	17.0	19.0	2.0	0.33	519153	633798	114	114	-60	114
and		24.0	31.0	7.0	0.99						

Newcore Gold Ltd. | Enchi Gold Project

2020 - 2022 Drill Results

Table accompanies news release dated March 7, 2022



Hole ID	Zone/Deposit	From (m)	To (m)	Length (m)	Au (g/t)	UTM East	UTM North	Elevation	Azimuth °	Dip °	Hole Length (m)
KBRC254	Boin	57.0	59.0	2.0	0.30	517736	632173	112	114	-50	102
KBRC255	Boin	143.0	145.0	2.0	0.39	517700	632187	113	114	-50	152
KBRC256	Boin	39.0	47.0	8.0	0.68	517597	631947	124	114	-55	150
and		51.0	53.0	2.0	0.27						
and		63.0	76.0	13.0	0.48						
and		118.0	119.0	1.0	0.36						
and		126.0	139.0	13.0	0.21						
KBRC257	Boin	42.0	44.0	2.0	0.43	517565	631962	114	114	-55	201
and		52.0	81.0	29.0	0.50						
and		188.0	201.0	13.0	0.45						
KBRC258	Boin	49.0	52.0	3.0	0.86	517585	632005	112	114	-50	150
and		62.0	65.0	3.0	0.50						
and		85.0	91.0	6.0	0.78						
and		107.0	114.0	7.0	0.27						
and		139.0	143.0	4.0	0.39						
KBRC259	Boin	56.0	62.0	6.0	0.46	517742	632065	113	114	-50	124
KBRC260	Boin	39.0	41.0	2.0	0.35	517663	631979	110	114	-55	90
and		49.0	62.0	13.0	0.78						
KBRC261	Boin	101.0	103.0	2.0	0.31	517742	632065	113	114	-50	156
KBRC262	Boin		no significant results			517617	632116	104	114	-50	198
KBRC263	Boin	22.0	25.0	3.0	0.31	517653	631932	113	114	-55	108
and		45.0	46.0	1.0	0.51						

Newcore Gold Ltd. | Enchi Gold Project

2020 - 2022 Drill Results

Table accompanies news release dated March 7, 2022



Hole ID	Zone/Deposit	From (m)	To (m)	Length (m)	Au (g/t)	UTM East	UTM North	Elevation	Azimuth °	Dip °	Hole Length (m)
KBRC264	Boin	33.0	42.0	9.0	0.50	517530	631895	119	114	-50	236
and		63.0	64.0	1.0	0.53						
and		72.0	102.0	30.0	0.39						
and		142.0	144.0	2.0	0.32						
and		160.0	169.0	9.0	0.32						
and		177.0	230.0	53.0	0.51						
including		187.0	196.0	9.0	1.17						
and		234.0	236.0	2.0	0.43						
KBRC265	Boin	3.0	5.0	2.0	0.32	517569	631819	132	114	-50	108
and		23.0	24.0	1.0	0.88						
and		44.0	48.0	4.0	0.36						
and		69.0	78.0	9.0	1.55						
including		70.0	72.0	2.0	4.75						
KBRC266	Boin	14.0	22.0	8.0	1.12	517530	631833	131	114	-50	156
and		92.0	94.0	2.0	0.56						
KBRC267	Boin	45.0	49.0	4.0	0.30	517490	631848	125	114	-55	186
and		95.0	102.0	7.0	1.78						
KBRC268	Boin	45.0	46.0	1.0	0.84	517365	631470	110	114	-50	126
and		60.0	85.0	25.0	0.79						
and		94.0	96.0	2.0	0.29						
and		108.0	121.0	13.0	0.54						
KBRC269	Boin	128.0	130.0	2.0	0.50	517338	631490	109	114	-50	152
KBRC270	Boin	48.0	53.0	5.0	0.50	517413	631559	108	114	-50	120
and		78.0	80.0	2.0	0.41						
and		92.0	112.0	20.0	0.44						
KBDD061A	Boin	236.0	236.7	0.7	1.38	518372	633108	122	114	-65	360.9
KBDD062	Boin	303.0	304.1	1.1	0.24	518423	633182	127	114	-62	320.8

Newcore Gold Ltd. | Enchi Gold Project

2020 - 2022 Drill Results

Table accompanies news release dated March 7, 2022



Hole ID	Zone/Deposit	From (m)	To (m)	Length (m)	Au (g/t)	UTM East	UTM North	Elevation	Azimuth °	Dip °	Hole Length (m)
KBDD063A	Boin	207.5	210.0	2.5	0.30	518891	633759	155	114	-60	249.8
and		218.5	225.8	7.3	0.45						
and		243.0	244.2	1.2	1.09						
and		248.0	249.8	1.8	0.63						
KBRD063	Boin	198.4	201.3	2.9	0.69	518891	633759	155	114	-60	315.4
and		208.9	221.9	13.0	0.13						
and		252.3	254.4	2.1	2.72						
and		297.8	301.0	3.2	0.72						
KBDD064	Boin	107.3	109.0	1.7	1.19	519239	634235	130	114	-60	351.7
and		121.0	195.0	74.0	1.28						
including		122.0	128.4	6.4	2.65						
including		136.0	137.4	1.4	9.93						
including		149.3	155.4	6.1	2.24						
including		170.6	177.0	6.4	4.04						
including	189.0	193.0	4.0	2.41							
KBDD065	Boin	276.3	277.0	0.7	1.32	520215	635573	109	114	-57	330.3
and		296.0	297.8	1.8	6.14						
and		310.0	313.0	3.0	0.56						
KBDD066	Boin	222.0	247.0	25.0	1.08	518777	633586	146	114	-57	300.6
including		222.0	224.0	2.0	4.31						
including		232.9	237.5	4.6	2.06						
and		257.4	279.0	21.6	0.63						
including		259.0	260.8	1.8	2.04						
including	267.0	270.0	3.0	1.84							
KBDD067	Boin		no significant results			519130	634081	142	114	-57	300.4
KBRC271	Boin	10.0	12.0	2.0	0.34	517381	631566	110	114	-50	162
and		18.0	25.0	7.0	1.22						
and		77.0	110.0	33.0	0.47						
and		119.0	122.0	3.0	0.30						

Newcore Gold Ltd. | Enchi Gold Project

2020 - 2022 Drill Results

Table accompanies news release dated March 7, 2022



Hole ID	Zone/Deposit	From (m)	To (m)	Length (m)	Au (g/t)	UTM East	UTM North	Elevation	Azimuth °	Dip °	Hole Length (m)
KBRC272	Boin	90.0	94.0	4.0	0.40	517432	631655	126	114	-50	162
and		102.0	109.0	7.0	0.75						
KBRC273	Boin	152.0	155.0	3.0	1.63	519489	634780	132	114	-50	278
and		166.0	175.0	9.0	1.67						
and		183.0	192.0	9.0	1.57						
and		232.0	233.0	1.0	0.70						
KBRC274	Boin	12.0	13.0	1.0	0.41	520124	635198	127	114	-55	200
and		32.0	40.0	8.0	0.41						
and		60.0	63.0	3.0	0.82						
and		84.0	85.0	1.0	0.39						
KBRC275	Boin	16.0	19.0	3.0	0.39	520245	635365	116	114	-55	156
and		45.0	46.0	1.0	0.31						
and		80.0	82.0	2.0	0.32						
KBRC276	Boin	27.0	67.0	40.0	0.63	520217	635377	120	114	-55	216
including		44.0	46.0	2.0	3.42						
and		69.0	70.0	1.0	0.65						
and		80.0	83.0	3.0	0.35						
and		91.0	103.0	12.0	0.64						
including		91.0	95.0	4.0	1.12						
and		113.0	216.0	103.0	1.00						
including		121.0	126.0	5.0	4.16						
including		132.0	133.0	1.0	2.91						
including	198.0	214.0	16.0	1.67							
KBRC277	Boin	159.0	162.0	3.0	1.00	518205	632743	131	114	-60	216
KBRC278	Boin	117.0	132.0	15.0	1.49	518259	632764	129	114	-55	156
including		123.0	129.0	6.0	2.44						
KBRC279	Boin	152.0	160.0	8.0	0.68	518229	632779	127	114	-55	205
and		171.0	174.0	3.0	0.45						
KBRC280	Boin	140.0	141.0	1.0	0.29	518288	632806	122	114	-60	222

Newcore Gold Ltd. | Enchi Gold Project

2020 - 2022 Drill Results

Table accompanies news release dated March 7, 2022



Hole ID	Zone/Deposit	From (m)	To (m)	Length (m)	Au (g/t)	UTM East	UTM North	Elevation	Azimuth °	Dip °	Hole Length (m)
SWRC068	Sewum	3.0	5.0	2.0	0.28	521494	629230	193	120	-70	100
and		23.0	31.0	8.0	0.30						
and		39.0	42.0	3.0	0.35						
and		46.0	62.0	16.0	0.54						
including		51.0	57.0	6.0	0.93						
and		74.0	76.0	2.0	1.03						
SWRC069	Sewum	39.0	41.0	2.0	0.30	521442	629252	198	120	-70	125
and		50.0	59.0	9.0	0.55						
and		63.0	70.0	7.0	0.47						
and		98.0	114.0	16.0	1.20						
SWRC070	Sewum	43.0	45.0	2.0	1.41	521392	629273	193	120	-70	180
and		141.0	148.0	7.0	0.98						
SWRC071	Sewum	3.0	16.0	13.0	0.45	521347	628986	193	120	-55	100
and		38.0	43.0	5.0	0.46						
and		95.0	100.0	5.0	0.55						
SWRC072	Sewum	3.0	22.0	19.0	0.67	521408	628860	199	120	-60	150
and		46.0	84.0	38.0	0.42						
SWRC073	Sewum	0.0	28.0	28.0	1.52	520472	626241	119	130	-50	100
including		15.0	25.0	10.0	3.58						
and		36.0	42.0	6.0	1.21						
SWRC074	Sewum	7.0	38.0	31.0	0.84	520416	626193	105	130	-50	100
including		8.0	17.0	9.0	1.47						
and		48.0	60.0	12.0	0.71						
and		92.0	94.0	2.0	0.36						
SWRC075	Sewum	169.0	177.0	8.0	0.56	520355	626219	102	130	-60	220
SWRC076	Sewum	1.0	12.0	11.0	0.48	521308	627853	118	120	-50	120
and		39.0	88.0	49.0	0.91						
and		104.0	120.0	16.0	3.04						

Newcore Gold Ltd. | Enchi Gold Project

2020 - 2022 Drill Results

Table accompanies news release dated March 7, 2022



Hole ID	Zone/Deposit	From (m)	To (m)	Length (m)	Au (g/t)	UTM East	UTM North	Elevation	Azimuth °	Dip °	Hole Length (m)
SWRC077	Sewum	29.0	35.0	6.0	0.49	521268	627871	112	120	-50	180
and		54.0	56.0	2.0	0.36						
and		68.0	83.0	15.0	0.76						
and		89.0	92.0	3.0	0.62						
and		117.0	119.0	2.0	0.40						
and		126.0	131.0	5.0	0.40						
and		138.0	140.0	2.0	0.28						
and		151.0	153.0	2.0	0.35						
and		163.0	165.0	2.0	0.40						
SWRC078	Sewum		no significant results			520197	626036	83	120	-60	270
SWRC079	Sewum	207.0	209.0	2.0	0.37	520334	626242	104	120	-60	294
and		260.0	262.0	2.0	1.78						
and		278.0	284.0	6.0	0.98						
SWRC080	Sewum	149.0	159.0	10.0	1.35	520405	626279	113	120	-60	204
and		166.0	168.0	2.0	0.49						
SWRC081	Sewum		no significant results			520380	626293	104	120	-60	250
SWRC082	Sewum	36.0	60.0	24.0	2.02	520483	626291	115	120	-50	246
and		96.0	111.0	15.0	0.40						
and		222.0	224.0	2.0	0.55						
SWRC083	Sewum	86.0	108.0	22.0	1.97	520459	626301	124	120	-60	252
and		140.0	141.0	1.0	0.83						
SWRC084	Sewum	115.0	134.0	19.0	1.41	520472	626357	114	120	-60	250
SWRC085	Sewum	4.0	12.0	8.0	0.43	521395	628651	191	120	-50	100
and		42.0	44.0	2.0	0.36						
and		63.0	64.0	1.0	0.31						
SWRC086	Sewum	131.0	133.0	2.0	0.46	521353	628672	198	120	-50	150
SWRC087	Sewum	0.0	1.0	1.0	0.66	521415	628352	145	120	-50	120
and		84.0	86.0	2.0	0.48						

Newcore Gold Ltd. | Enchi Gold Project

2020 - 2022 Drill Results

Table accompanies news release dated March 7, 2022



Hole ID	Zone/Deposit	From (m)	To (m)	Length (m)	Au (g/t)	UTM East	UTM North	Elevation	Azimuth °	Dip °	Hole Length (m)
SWRC088	Sewum	7.0	18.0	11.0	0.32	521366	628375	145	120	-50	180
and		34.0	36.0	2.0	0.29						
and		56.0	63.0	7.0	0.35						
SWRC089	Sewum	12.0	13.0	1.0	0.33	521412	628244	127	120	-50	102
and		43.0	45.0	2.0	0.31						
and		47.0	49.0	2.0	0.30						
and		60.0	62.0	2.0	0.38						
SWRC090	Sewum	0.0	1.0	1.0	0.52	521370	628269	137	120	-50	156
and		66.0	68.0	2.0	0.29						
and		114.0	116.0	2.0	0.46						
and		119.0	121.0	2.0	0.73						
SWRC091	Sewum	4.0	5.0	1.0	0.32	521371	628158	107	120	-50	100
and		60.0	61.0	1.0	0.30						
and		81.0	82.0	1.0	0.40						
and		95.0	99.0	4.0	0.81						
SWRC092	Sewum	90.0	91.0	1.0	0.71	521270	627986	106	120	-50	220
and		140.0	148.0	8.0	0.37						
and		196.0	198.0	2.0	0.43						
SWRC093	Sewum	8.0	11.0	3.0	1.48	521364	627948	102	120	-50	168
and		32.0	49.0	17.0	0.60						
and		61.0	164.0	103.0	0.82						

Newcore Gold Ltd. | Enchi Gold Project

2020 - 2022 Drill Results

Table accompanies news release dated March 7, 2022



Hole ID	Zone/Deposit	From (m)	To (m)	Length (m)	Au (g/t)	UTM East	UTM North	Elevation	Azimuth °	Dip °	Hole Length (m)
SWRC094	Sewum	86.0	88.0	2.0	0.33	521225	627895	113	120	-50	254
and		91.0	94.0	3.0	0.32						
and		108.0	111.0	3.0	1.19						
and		115.0	131.0	16.0	1.26						
and		147.0	150.0	3.0	0.55						
and		158.0	164.0	6.0	1.51						
and		175.0	183.0	8.0	2.35						
and		187.0	195.0	8.0	0.71						
and		246.0	252.0	6.0	0.37						
SWRC095	Sewum	27.0	28.0	1.0	0.95	521155	627863	119	120	-50	242
and		122.0	124.0	2.0	1.63						
and		181.0	195.0	14.0	0.53						
and		233.0	238.0	5.0	1.16						
SWRC096	Sewum	0.0	1.0	1.0	2.44	521165	627779	105	120	-50	200
and		66.0	67.0	1.0	1.56						
and		83.0	84.0	1.0	0.54						
and		92.0	108.0	16.0	0.69						
and		136.0	138.0	2.0	0.40						
and		143.0	192.0	49.0	0.32						
SWRC097	Sewum	2.0	3.0	1.0	0.31	521164	627439	106	120	-50	180
and		22.0	23.0	1.0	0.36						
and		155.0	156.0	1.0	0.62						
SWRC098	Sewum	7.0	12.0	5.0	0.29	521375	628065	100	120	-50	150
and		59.0	60.0	1.0	0.66						
SWRC099	Sewum	9.0	10.0	1.0	0.42	521332	628166	110	120	-50	150
		94.0	96.0	2.0	0.21						
		118.0	130.0	12.0	0.73						
		136.0	138.0	2.0	0.29						

Newcore Gold Ltd. | Enchi Gold Project

2020 - 2022 Drill Results

Table accompanies news release dated March 7, 2022



Hole ID	Zone/Deposit	From (m)	To (m)	Length (m)	Au (g/t)	UTM East	UTM North	Elevation	Azimuth °	Dip °	Hole Length (m)
SWRC100	Sewum	116.0	122.0	6.0	0.60	520433	626319	116	120	-60	252
and		144.0	158.0	14.0	0.74						
and		189.0	190.0	1.0	1.06						
and		195.0	196.0	1.0	0.41						
SWRC101	Sewum	154.0	171.0	17.0	0.62	520451	626371	112	120	-60	220
SWRC102	Sewum	35.0	36.0	1.0	0.32	520332	626142	93	120	-60	200
SWRC103	Sewum	19.0	20.0	1.0	0.34	520348	626128	98	120	-50	174
and		63.0	72.0	9.0	0.77						
and		78.0	79.0	1.0	0.30						
and		83.0	87.0	4.0	0.47						
SWRC104	Sewum	26.0	27.0	1.0	0.95	520571	626500	93	120	-60	264
and		126.0	127.0	1.0	0.43						
and		146.0	150.0	4.0	0.92						
and		215.0	216.0	1.0	0.70						
SWRC105	Sewum	7.0	9.0	2.0	0.28	521415	628026	106	120	-50	274
and		84.0	85.0	1.0	0.65						
and		99.0	101.0	2.0	0.33						
SWRC106	Sewum		no significant results			521448	627900	104	120	-50	234
SWRC107	Sewum	4.0	81.0	77.0	0.63	521408	627918	102	120	-50	186
including		4.0	40.0	36.0	0.72						
and incl.		28.0	37.0	9.0	1.82						
including		48.0	80.0	32.0	0.70						
and incl.		53.0	67.0	14.0	1.22						
and		139.0	186.0	47.0	0.39						
SWRC108	Sewum	78.0	79.0	1.0	0.31	521444	628077	114	120	-50	300
and		139.0	143.0	4.0	0.42						
SWRC109	Sewum	116.0	117.0	1.0	0.24	521438	627962	104	120	-50	262
and		154.0	155.0	1.0	0.23						
SWRC110	Sewum		no significant results			521480	627942	105	120	-50	222

Newcore Gold Ltd. | Enchi Gold Project

2020 - 2022 Drill Results

Table accompanies news release dated March 7, 2022



Hole ID	Zone/Deposit	From (m)	To (m)	Length (m)	Au (g/t)	UTM East	UTM North	Elevation	Azimuth °	Dip °	Hole Length (m)
SWRC111	Sewum	5.0	11.0	6.0	0.25	521341	627895	108	120	-50	300
and		63.0	76.0	13.0	0.22						
and		90.0	92.0	2.0	0.49						
and		108.0	109.0	1.0	0.42						
and		112.0	113.0	1.0	0.37						
and		115.0	124.0	9.0	0.66						
and		175.0	176.0	1.0	0.36						
and		180.0	181.0	1.0	0.40						
and		214.0	215.0	1.0	0.31						
and		248.0	254.0	6.0	0.28						
and		262.0	263.0	1.0	0.38						
and		287.0	298.0	11.0	0.23						
SWRC112	Sewum	32.0	33.0	1.0	0.38						
and		51.0	57.0	6.0	0.44						
and		116.0	117.0	1.0	0.46						
and		149.0	150.0	1.0	0.45						
and		185.0	186.0	1.0	0.30						
and		213.0	216.0	3.0	0.29						
SWRC113	Sewum	46.0	48.0	2.0	0.61	521387	627988	98	120	-50	283
and		61.0	65.0	4.0	0.33						
and		84.0	86.0	2.0	0.32						
and		164.0	166.0	2.0	0.29						
and		207.0	208.0	1.0	0.50						
and		220.0	283.0	63.0	0.24						
including		231.0	233.0	2.0	0.49						
including		255.0	257.0	2.0	0.42						
including		271.0	283.0	12.0	0.39						

Newcore Gold Ltd. | Enchi Gold Project

2020 - 2022 Drill Results

Table accompanies news release dated March 7, 2022



Hole ID	Zone/Deposit	From (m)	To (m)	Length (m)	Au (g/t)	UTM East	UTM North	Elevation	Azimuth °	Dip °	Hole Length (m)
SWDD070A	Sewum	131.4	131.8	0.4	2.48	521129	627940	118	120	-57	320.4
and		212.4	213.0	0.6	0.42						
and		243.0	244.0	1.0	0.38						
and		285.5	298.2	12.7	0.17						
SWDD071B	Sewum	77.5	79.0	1.5	0.63	521312	627963	100	120	-55	374.5
and		104.0	118.0	14.0	2.33						
including		110.0	117.0	7.0	4.08						
and incl.		116.0	117.0	1.0	20.54						
and		123.0	127.0	4.0	0.67						
and		149.0	151.0	2.0	0.93						
and		162.0	166.1	4.1	0.33						
and		171.0	172.0	1.0	0.31						
and		242.0	244.0	2.0	0.30						
and		277.6	291.0	13.4	0.40						
SWDD072	Sewum	134.0	135.4	1.4	0.23	521119	627799	111	120	-55	259.8
and		184.3	186.2	1.9	0.27						
and		221.3	228.0	6.7	0.79						
SWDD073	Sewum	159.0	164.1	5.1	0.75	521264	628205	131	120	-55	350.1
and		168.0	180.8	12.8	0.34						
and		195.5	202.0	6.5	1.61						
and		220.2	223.7	3.5	0.78						
and		231.2	237.3	6.1	0.56						
including		231.2	233.0	1.8	1.24						
and		257.2	258.0	0.8	0.42						
and		273.3	284.5	11.2	0.63						
including		283.0	284.5	1.5	2.38						
and		294.0	297.0	3.0	0.57						
and		303.0	307.0	4.0	0.31						
and		319.7	327.0	7.3	0.64						

Newcore Gold Ltd. | Enchi Gold Project

2020 - 2022 Drill Results

Table accompanies news release dated March 7, 2022



Hole ID	Zone/Deposit	From (m)	To (m)	Length (m)	Au (g/t)	UTM East	UTM North	Elevation	Azimuth °	Dip °	Hole Length (m)
SWDD074	Sewum	6.0	9.0	3.0	0.26	521313	628290	143	120	-55	329.2
and		57.2	60.4	3.2	0.42						
and		107.0	108.0	1.0	0.30						
and		114.0	115.0	1.0	1.01						
and		149.4	150.0	0.6	0.65						
and		236.1	237.4	1.3	0.28						
SWDD075	Sewum	2.0	18.0	16.0	0.58	521303	628694	195	120	-52	389.3
and		101.0	108.3	7.3	0.31						
and		125.0	125.9	0.9	1.75						
and		344.3	345.0	0.7	1.05						
and		350.0	365.6	15.6	0.98						
including		359.0	365.6	6.6	2.00						
SWDD076	Sewum	130.0	146.0	16.0	0.54	520522	626435	107	120	-55	275.1
including		131.0	132.0	1.0	1.64						
and		160.0	161.0	1.0	0.49						
SWDD077	Sewum	148.0	149.0	1.0	0.53	520396	626389	102	120	-55	302.1
and		224.0	233.0	9.0	1.23						
including		227.0	230.1	3.1	1.98						
and		243.0	245.0	2.0	0.45						
and		253.3	255.0	1.7	0.74						
and		289.2	290.1	0.9	0.32						
SWDD078	Sewum	250.0	250.8	0.8	0.63	520300	626255	99	120	-60	371.4
and		324.0	331.0	7.0	0.39						

Newcore Gold Ltd. | Enchi Gold Project

2020 - 2022 Drill Results

Table accompanies news release dated March 7, 2022



Hole ID	Zone/Deposit	From (m)	To (m)	Length (m)	Au (g/t)	UTM East	UTM North	Elevation	Azimuth °	Dip °	Hole Length (m)
SWDD079A	Sewum	39.4	56.0	16.6	0.20	521289	628910	174	120	-60	404.6
and		62.2	72.0	9.8	0.21						
and		75.8	79.0	3.2	0.38						
and		120.0	132.0	12.0	0.33						
and		173.6	187.0	13.4	0.52						
and		191.9	195.0	3.1	0.56						
and		209.9	212.0	2.1	0.37						
and		220.2	221.0	0.8	0.37						
and		307.0	310.0	3.0	0.28						
and		313.0	314.0	1.0	0.47						
and		404.0	405.0	1.0	0.34						
SWDD080	Sewum	214.0	215.0	1.0	0.52	520308	626179	87	120	-70	282.2
and		247.1	249.0	1.9	0.42						
SWRC143	Sewum Ext.	5.0	19.0	14.0	1.49	520505	626275	122	120	-55	50
and		26.0	27.0	1.0	0.87						
SWRC144	Sewum Ext.	81.0	94.0	13.0	1.72	520501	626343	118	120	-60	120
SWRC145	Sewum Ext.	8.0	34.0	26.0	0.41	520569	626355	113	120	-55	70
SWRC146	Sewum Ext.	47.0	51.0	4.0	0.38	520550	626367	120	120	-55	100
and		62.0	64.0	2.0	1.32						
SWRC147	Sewum Ext.	6.0	20.0	14.0	0.45	520615	626387	108	120	-55	40
SWRC148	Sewum Ext.	66.0	68.0	2.0	1.37	520576	626411	105	120	-65	110
and		84.0	86.0	2.0	0.36						
SWRC149	Sewum Ext. 2	47.0	49.0	2.0	0.29	520996	626322	98	120	-50	100
SWRC150	Sewum Ext. 2	5.0	7.0	2.0	0.55	520893	626162	97	120	-50	102
SWRC151	Sewum Ext. 2	16.0	17.0	1.0	0.53	520775	626215	130	120	-50	102
and		29.0	39.0	10.0	1.10						
and		72.0	92.0	20.0	0.67						
including		79.0	84.0	5.0	1.23						

Newcore Gold Ltd. | Enchi Gold Project

2020 - 2022 Drill Results

Table accompanies news release dated March 7, 2022



Hole ID	Zone/Deposit	From (m)	To (m)	Length (m)	Au (g/t)	UTM East	UTM North	Elevation	Azimuth °	Dip °	Hole Length (m)
SWRC152	Sewum Ext. 2	2.0	8.0	6.0	5.84	520831	626189	189	120	-50	100
including		2.0	3.0	1.0	26.82						
SWRC153	Sewum Ext. 2	0.0	3.0	3.0	0.69	520845	626392	110	120	-50	108
and		11.0	14.0	3.0	0.60						
SWRC154	Sewum Ext. 2		no significant results			520779	626420	117	120	-50	114
SWRC155	Sewum Ext. 2	49.0	50.0	1.0	0.51	520915	626351	94	120	-50	130
and		111.0	120.0	9.0	0.41						
and		124.0	126.0	2.0	0.43						
SWRC156	Sewum Ext.		no significant results			520654	626422	98	120	-55	50
SWRC157	Sewum Ext.	96.0	98.0	2.0	0.65	520589	626463	89	120	-55	120
SWRC158	Sewum Ext.	28.0	30.0	2.0	1.30	520623	626437	87	120	-55	100
SWRC159	Sewum Ext.	95.0	102.0	7.0	1.06	520522	626383	113	120	-55	140
SWRC160	Sewum Ext.	123.0	141.0	18.0	2.14	520491	626397	117	120	-55	160
including		124.0	128.0	4.0	3.01						
and incl.		129.0	136.0	7.0	2.87						
SWRC161	Sewum Ext.		no significant results			520491	626397	117	120	-60	40
SWRC162	Sewum Ext.	0.0	2.0	2.0	0.26	520393	626096	96	120	-60	50
and		29.0	33.0	4.0	0.37						
SWRC163	Sewum Ext.	0.0	24.0	24.0	0.39	520381	626103	97	120	-60	70
including		4.0	10.0	6.0	0.80						
SWRC164	Sewum Ext.	3.0	28.0	25.0	1.98	520402	626147	92	120	-60	70
and		35.0	37.0	2.0	0.64						
and		48.0	70.0	22.0	0.58						
SWRC165	Sewum Ext.	24.0	26.0	2.0	0.46	520374	626160	92	120	-60	100
and		73.0	91.0	18.0	1.31						
including		83.0	85.0	2.0	8.28						
SWRC166	Sewum Ext.	117.0	120.0	3.0	2.36	520355	626174	93	120	-55	140
and		126.0	132.0	6.0	0.29						

Newcore Gold Ltd. | Enchi Gold Project

2020 - 2022 Drill Results

Table accompanies news release dated March 7, 2022



Hole ID	Zone/Deposit	From (m)	To (m)	Length (m)	Au (g/t)	UTM East	UTM North	Elevation	Azimuth °	Dip °	Hole Length (m)
SWRC167	Sewum Ext. 2	46.0	47.0	1.0	0.54	520717	626011	95	120	-50	100
and		73.0	74.0	1.0	0.40						
SWRC168	Sewum Ext. 2	4.0	8.0	4.0	0.48	520655	626046	101	120	-50	100
and		35.0	47.0	12.0	0.85						
and		72.0	85.0	13.0	0.70						
and		91.0	100.0	9.0	0.49						
SWRC169	Sewum Ext.	1.0	9.0	8.0	0.50	520441	626176	107	120	-55	85
and		15.0	29.0	14.0	0.83						
including		24.0	27.0	3.0	2.50						
and		36.0	37.0	1.0	0.30						
SWRC170	Sewum Ext. 2	96.0	100.0	4.0	0.30	520633	626060	101	120	-55	130
and		122.0	124.0	2.0	0.72						
NBRC016	Nyam	23.0	29.0	6.0	1.03	530221	637264	81	300	-60	130
and		50.0	54.0	4.0	0.40						
and		68.0	86.0	18.0	0.63						
and		97.0	100.0	3.0	0.48						
and		109.0	112.0	3.0	0.55						
NBRC017	Nyam	8.0	53.0	45.0	1.38	530241	637278	69	300	-60	150
including		8.0	30.0	22.0	0.74						
and incl.		47.0	53.0	6.0	6.25						
and		64.0	66.0	2.0	1.88						
and		83.0	93.0	10.0	0.41						
and		102.0	107.0	5.0	0.54						
and		135.0	137.0	2.0	0.34						
NBRC018	Nyam	10.0	12.0	2.0	0.25	530180	637314	76	300	-60	84
and		36.0	42.0	6.0	0.32						
NBRC019	Nyam	80.0	82.0	2.0	0.35	530845	638277	81	300	-60	156
and		91.0	108.0	17.0	1.20						

Newcore Gold Ltd. | Enchi Gold Project

2020 - 2022 Drill Results

Table accompanies news release dated March 7, 2022



Hole ID	Zone/Deposit	From (m)	To (m)	Length (m)	Au (g/t)	UTM East	UTM North	Elevation	Azimuth °	Dip °	Hole Length (m)
NBRC020	Nyam	51.0	60.0	9.0	1.14	530506	637714	86	300	-60	150
and		73.0	102.0	29.0	0.94						
and		110.0	120.0	10.0	1.18						
and		139.0	143.0	4.0	0.41						
NBRC021	Nyam	15.0	17.0	2.0	0.33	530474	637679	93	300	-60	130
and		32.0	34.0	2.0	0.73						
and		50.0	54.0	4.0	1.56						
and		63.0	84.0	21.0	1.42						
and		90.0	96.0	6.0	1.26						
and		102.0	105.0	3.0	0.36						
and		109.0	119.0	10.0	0.52						
and		126.0	129.0	3.0	0.65						
NBRC022	Nyam	8.0	10.0	2.0	1.96	530435	637610	102	300	-60	150
and		70.0	90.0	20.0	1.72						
and		116.0	119.0	3.0	0.36						
NBRC023	Nyam	49.0	51.0	2.0	0.19	530712	638187	98	300	-60	80
NBRC024	Nyam	22.0	26.0	4.0	0.67	530262	637265	78	300	-60	156
and		41.0	42.0	1.0	0.89						
and		57.0	84.0	27.0	1.34						
and		93.0	102.0	9.0	3.45						
and		113.0	120.0	7.0	0.47						
and		137.0	146.0	9.0	0.38						
NBRC025	Nyam	33.0	35.0	2.0	0.51	530284	637253	78	300	-60	174
and		72.0	73.0	1.0	0.41						
and		92.0	124.0	32.0	0.84						
and		136.0	139.0	3.0	0.51						
and		151.0	162.0	11.0	0.55						

Newcore Gold Ltd. | Enchi Gold Project

2020 - 2022 Drill Results

Table accompanies news release dated March 7, 2022



Hole ID	Zone/Deposit	From (m)	To (m)	Length (m)	Au (g/t)	UTM East	UTM North	Elevation	Azimuth °	Dip °	Hole Length (m)
NBRC026	Nyam	64.0	66.0	2.0	0.36	530262	637240	75	300	-60	204
and		79.0	91.0	12.0	0.42						
and		96.0	98.0	2.0	0.86						
and		105.0	109.0	4.0	2.39						
and		116.0	117.0	1.0	0.65						
and		125.0	127.0	2.0	1.00						
and		145.0	148.0	3.0	0.57						
and		170.0	173.0	3.0	0.41						
and		177.0	179.0	2.0	0.34						
NBRC027	Nyam	3.0	9.0	6.0	2.83	530200	637284	74	300	-60	110
and		39.0	55.0	16.0	0.48						
and		60.0	62.0	2.0	0.36						
NBRC028	Nyam	32.0	36.0	4.0	0.46	530122	637161	76	300	-60	132
and		60.0	74.0	14.0	0.49						
NBRC029	Nyam	10.0	11.0	1.0	1.15	530142	637152	78	300	-60	150
and		59.0	61.0	2.0	0.82						
and		87.0	89.0	2.0	0.53						
NBRC030	Nyam	69.0	85.0	16.0	1.17	530180	637146	77	300	-60	180
and		102.0	104.0	2.0	0.53						
and		110.0	115.0	5.0	1.48						
and		150.0	155.0	5.0	0.34						
and		158.0	160.0	2.0	0.32						
NBRC031	Nyam	28.0	29.0	1.0	0.49	530297	637242	80	300	-60	210
and		104.0	106.0	2.0	0.32						
and		124.0	148.0	24.0	0.31						
and		158.0	164.0	6.0	1.48						
and		177.0	188.0	11.0	1.28						
NBRC032	Nyam	170.0	226.0	56.0	0.40	530507	637573	72	300	-60	258

Newcore Gold Ltd. | Enchi Gold Project

2020 - 2022 Drill Results

Table accompanies news release dated March 7, 2022



Hole ID	Zone/Deposit	From (m)	To (m)	Length (m)	Au (g/t)	UTM East	UTM North	Elevation	Azimuth °	Dip °	Hole Length (m)
NBRC033	Nyam	151.0	153.0	2.0	0.57	530909	638234	97	300	-60	264
and		201.0	214.0	13.0	1.00						
and		233.0	235.0	2.0	0.32						
NBRC034	Nyam	0.0	14.0	14.0	0.59	530760	638239	100	300	-60	156
NBRC035	Nyam	130.0	132.0	2.0	0.57	530910	638345	84	300	-60	156
and		135.0	137.0	2.0	0.54						
and		142.0	144.0	2.0	0.78						
NBRC036	Nyam	7.0	9.0	2.0	0.75	531135	638959	70	300	-60	102
and		87.0	88.0	1.0	0.38						
NBRC037	Nyam	6.0	7.0	1.0	0.34	531161	638947	79	300	-60	156
and		20.0	21.0	1.0	0.69						
and		68.0	77.0	9.0	0.46						
and		81.0	83.0	2.0	0.48						
NBRC038	Nyam	109.0	112.0	3.0	0.52	531190	638936	68	300	-60	204
and		122.0	126.0	4.0	0.42						
and		130.0	132.0	2.0	0.33						
NBRC039	Nyam	7.0	29.0	22.0	0.50	531096	638870	72	300	-60	114
NBRC040	Nyam	52.0	70.0	18.0	0.30	531120	638857	75	300	-60	156
and		76.0	83.0	7.0	1.05						
NBRC041	Nyam	111.0	131.0	20.0	0.39	531147	638847	74	300	-60	201
NBRC042A	Nyam	9.0	15.0	6.0	0.40	531054	638780	83	300	-60	102
and		24.0	37.0	13.0	0.62						
NBRC043	Nyam	104.0	124.0	20.0	0.31	531099	638758	76	300	-60	180
NBRC044	Nyam	8.0	10.0	2.0	0.98	530696	638123	132	300	-60	162
and		17.0	20.0	3.0	0.53						
and		41.0	67.0	26.0	1.17						
NBRC045	Nyam	165.0	174.0	9.0	0.81	530544	637644	115	300	-60	252
and		179.0	219.0	40.0	1.57						
including		185.0	194.0	9.0	5.40						

Newcore Gold Ltd. | Enchi Gold Project

2020 - 2022 Drill Results

Table accompanies news release dated March 7, 2022



Hole ID	Zone/Deposit	From (m)	To (m)	Length (m)	Au (g/t)	UTM East	UTM North	Elevation	Azimuth °	Dip °	Hole Length (m)
NBRC046	Nyam	116.0	119.0	3.0	0.52	530527	637695	104	300	-60	186
and		124.0	147.0	23.0	0.60						
NBRC047	Nyam	182.0	205.0	23.0	0.48	530572	637672	112	300	-60	247
and		212.0	216.0	4.0	0.40						
and		222.0	247.0	25.0	1.94						
including		227.0	234.0	7.0	5.78						
NBRC048	Nyam	79.0	85.0	6.0	0.33	530333	637622	101	300	-60	114
and		95.0	101.0	6.0	0.31						
and		104.0	114.0	10.0	0.30						
NBRC049	Nyam	7.0	10.0	3.0	0.39	530360	637607	102	300	-60	134
and		13.0	14.0	1.0	0.37						
NBRC050	Nyam	11.0	13.0	2.0	1.23	530339	637516	96	300	-60	120
and		23.0	27.0	4.0	1.03						
and		35.0	45.0	10.0	0.67						
and		50.0	53.0	3.0	0.35						
NBRC051	Nyam	15.0	16.0	1.0	0.30	530325	637479	93	300	-60	126
and		28.0	31.0	3.0	0.99						
and		38.0	47.0	9.0	0.69						
and		57.0	65.0	8.0	0.51						
NBRC052	Nyam	4.0	7.0	3.0	1.28	530267	637402	87	300	-60	115
and		17.0	22.0	5.0	0.31						
and		24.0	26.0	2.0	0.34						
and		38.0	40.0	2.0	0.34						
and		67.0	69.0	2.0	1.97						
NBRC053	Nyam	9.0	11.0	2.0	0.86	530292	637376	79	300	-60	155
and		42.0	44.0	2.0	0.32						
and		48.0	57.0	9.0	1.32						
and		100.0	107.0	7.0	0.33						
NBRC054	Nyam		no significant results			530206	637384	72	300	-60	115

Newcore Gold Ltd. | Enchi Gold Project

2020 - 2022 Drill Results

Table accompanies news release dated March 7, 2022



Hole ID	Zone/Deposit	From (m)	To (m)	Length (m)	Au (g/t)	UTM East	UTM North	Elevation	Azimuth °	Dip °	Hole Length (m)
NBRC055	Nyam	12.0	21.0	9.0	0.38	530229	637372	78	300	-60	144
and		102.0	103.0	1.0	1.04						
NBRC056	Nyam		no significant results			530086	637145	80	300	-60	153
NBRC057	Nyam	102.0	103.0	1.0	0.31	530012	637064	77	300	-60	150
NBRC058	Nyam	17.0	19.0	2.0	1.11	530119	637014	75	300	-60	162
and		94.0	95.0	2.0	0.29						
and		106.0	108.0	2.0	0.68						
NBRC059B	Nyam	97.0	106.0	10.0	1.60	530177	637089	73	300	-60	150
NBRC060	Nyam	7.0	8.0	1.0	0.74	529938	636854	84	300	-60	174
and		84.0	85.0	1.0	0.22						
NBRC061	Nyam		no significant results			529759	636735	106	300	-60	156
NBRC062	Nyam	60.0	61.0	1.0	0.26	529834	636686	99	300	-60	162
and		75.0	76.0	1.0	0.52						
NBRC063	Nyam		no significant results			529657	636560	114	300	-60	150
NBRC064	Nyam	58.0	59.0	1.0	0.49	529735	636517	113	300	-60	150
NBRC065	Nyam		no significant results			529555	636386	117	300	-60	156
NBRC066	Nyam	89.0	104.0	15.0	0.52	529631	636341	94	300	-60	153
NBRC067	Nyam	49.0	50.0	1.0	0.36	530332	637356	79	300	-60	184
and		87.0	89.0	2.0	0.35						
and		111.0	113.0	2.0	0.43						
and		129.0	130.0	1.0	1.14						
and		147.0	184.0	37.0	0.54						
including		159.0	164.0	5.0	1.69						
NBRC068	Nyam	48.0	49.0	1.0	1.03	530363	637340	85	300	-60	252
and		104.0	105.0	1.0	0.34						
and		121.0	122.0	1.0	1.66						
and		153.0	154.0	1.0	0.35						
and		201.0	203.0	2.0	0.93						
and		234.0	238.0	4.0	0.62						

Newcore Gold Ltd. | Enchi Gold Project

2020 - 2022 Drill Results

Table accompanies news release dated March 7, 2022



Hole ID	Zone/Deposit	From (m)	To (m)	Length (m)	Au (g/t)	UTM East	UTM North	Elevation	Azimuth °	Dip °	Hole Length (m)
NBRC069	Nyam	16.0	25.0	9.0	0.60	530308	637454	89	300	-60	144
and		33.0	38.0	5.0	0.58						
and		56.0	58.0	2.0	0.41						
NBRC070	Nyam	79.0	80.0	1.0	1.11	530251	637110	81	300	-50	240
and		148.0	149.0	1.0	0.52						
and		181.0	183.0	2.0	0.58						
and		195.0	199.0	4.0	1.02						
and		231.0	234.0	3.0	0.75						
NBRC071	Nyam	60.0	65.0	5.0	0.44	530354	637456	93	300	-50	135
and		92.0	93.0	1.0	1.53						
and		101.0	118.0	17.0	0.72						
NBRC072	Nyam	59.0	61.0	2.0	0.58	530402	637545	95	300	-60	140
and		76.0	78.0	2.0	0.46						
and		85.0	105.0	20.0	0.58						
and		127.0	129.0	2.0	0.62						
NBRC073	Nyam	26.0	27.0	1.0	0.40	530425	637572	98	300	-60	142
and		74.0	131.0	57.0	0.78						
including		94.0	103.0	9.0	1.34						
NBRC074	Nyam	125.0	131.0	6.0	0.45	530457	637552	94	300	-60	197
and		141.0	147.0	6.0	0.55						
and		163.0	178.0	15.0	0.55						
including		157.0	159.0	2.0	0.99						
and		192.0	194.0	2.0	1.42						
NBRC075	Nyam	0.0	35.0	35.0	2.04	530404	637629	99	300	-60	144
including		8.0	16.0	8.0	4.89						
and incl.		9.0	11.0	2.0	9.60						
and		108.0	110.0	2.0	0.27						

Newcore Gold Ltd. | Enchi Gold Project

2020 - 2022 Drill Results

Table accompanies news release dated March 7, 2022



Hole ID	Zone/Deposit	From (m)	To (m)	Length (m)	Au (g/t)	UTM East	UTM North	Elevation	Azimuth °	Dip °	Hole Length (m)
NBRC076	Nyam	1.0	51.0	50.0	0.85	530442	637701	96	300	-60	120
including		1.0	14.0	13.0	1.18						
and incl.		31.0	39.0	8.0	2.10						
NBRC077	Nyam	52.0	60.0	8.0	0.51	530488	637722	83	300	-60	183
and		69.0	98.0	29.0	1.13						
and		119.0	126.0	7.0	0.49						
and		141.0	145.0	4.0	0.39						
NBRC078	Nyam	27.0	30.0	3.0	0.57	530501	637751	85	300	-55	144
and		36.0	115.0	79.0	0.53						
NBRC079	Nyam	92.0	119.0	27.0	0.89	530538	637730	93	300	-55	160
including		104.0	109.0	5.0	2.19						
and		132.0	142.0	10.0	0.45						
NBRC080	Nyam	62.0	68.0	6.0	0.51	530536	637767	87	300	-60	180
and		81.0	83.0	2.0	0.41						
and		91.0	94.0	3.0	4.63						
and		106.0	111.0	5.0	0.96						
and		124.0	132.0	8.0	0.70						
NBRC081	Nyam	33.0	43.0	10.0	0.99	530615	637853	83	300	-50	144
and		94.0	101.0	7.0	0.46						
and		120.0	130.0	10.0	1.68						
NBRC082	Nyam	0.0	12.0	12.0	0.34	530599	637880	88	300	-60	162
and		75.0	83.0	8.0	0.52						
and		93.0	108.0	15.0	1.18						
including		93.0	97.0	4.0	2.41						
NBRC083	Nyam	71.0	72.0	1.0	0.32	530548	637941	84	300	-60	100
NBRC084	Nyam	92.0	102.0	10.0	0.93	530634	637896	88	300	-50	126
and		108.0	120.0	12.0	0.89						

Newcore Gold Ltd. | Enchi Gold Project

2020 - 2022 Drill Results

Table accompanies news release dated March 7, 2022



Hole ID	Zone/Deposit	From (m)	To (m)	Length (m)	Au (g/t)	UTM East	UTM North	Elevation	Azimuth °	Dip °	Hole Length (m)
NBRC085	Nyam	0.0	18.0	18.0	1.26	530572	637961	89	300	-60	120
including		11.0	13.0	2.0	6.46						
and		82.0	85.0	3.0	0.60						
NBRC086	Nyam	10.0	12.0	2.0	0.32	530597	637974	89	300	-60	130
and		17.0	36.0	19.0	1.24						
and		101.0	102.0	1.0	0.45						
and		115.0	117.0	2.0	0.37						
and		121.0	128.0	7.0	0.42						
NBRC087	Nyam	1.0	4.0	3.0	0.51	530632	637952	95	300	-60	120
and		71.0	79.0	8.0	0.52						
and		84.0	103.0	19.0	2.14						
including		92.0	94.0	2.0	4.14						
NBRC088	Nyam	57.0	85.0	28.0	0.88	530616	637935	95	300	-60	110
and		80.0	82.0	2.0	5.09						
NBRC089	Nyam	0.0	5.0	5.0	1.86	530631	637994	103	300	-60	152
and		37.0	39.0	2.0	0.76						
and		44.0	53.0	9.0	0.92						
and		60.0	62.0	2.0	0.88						
NBRC090	Nyam	17.0	18.0	1.0	0.41	530663	638009	110	300	-60	160
and		23.0	24.0	1.0	0.36						
and		32.0	35.0	3.0	1.53						
and		78.0	109.0	31.0	0.77						
including		102.0	103.0	1.0	4.92						
including		107.0	108.0	1.0	5.19						
and		115.0	116.0	1.0	0.30						
and		156.0	158.0	2.0	0.34						

Newcore Gold Ltd. | Enchi Gold Project

2020 - 2022 Drill Results

Table accompanies news release dated March 7, 2022



Hole ID	Zone/Deposit	From (m)	To (m)	Length (m)	Au (g/t)	UTM East	UTM North	Elevation	Azimuth °	Dip °	Hole Length (m)
NBRC091	Nyam	84.0	86.0	2.0	0.38	530704	637995	106	300	-60	204
and		91.0	103.0	12.0	1.02						
and		134.0	139.0	5.0	0.54						
and		147.0	150.0	3.0	0.61						
NBRC092	Nyam	9.0	13.0	4.0	0.61	530670	638079	139	300	-60	129
and		38.0	62.0	24.0	1.79						
including		51.0	55.0	4.0	4.14						
NBRC093	Nyam	40.0	41.0	1.0	0.33	530683	638040	130	300	-60	183
and		49.0	59.0	10.0	0.24						
and		79.0	127.0	48.0	0.43						
including		79.0	91.0	12.0	0.89						
and incl.		84.0	88.0	4.0	1.79						
including		95.0	107.0	12.0	0.54						
and incl.		99.0	102.0	3.0	1.32						
and		113.0	114.0	1.0	0.35						
and		132.0	133.0	1.0	0.51						
NBRC094	Nyam	0.0	2.0	2.0	0.30	530669	638118	137	300	-63	132
and		14.0	28.0	14.0	0.68						
NBRC095	Nyam	61.0	75.0	14.0	0.72	530726	638099	90	300	-60	138
including		70.0	74.0	4.0	1.42						
and		105.0	125.0	20.0	0.90						
including		111.0	114.0	3.0	2.38						
and		134.0	136.0	2.0	1.99						
NBRC096	Nyam		no significant results			530681	638193	109	300	-60	130
NBRC097	Nyam	10.0	35.0	25.0	0.87	530805	638296	84	300	-60	82
including		20.0	24.0	4.0	2.59						

Newcore Gold Ltd. | Enchi Gold Project

2020 - 2022 Drill Results

Table accompanies news release dated March 7, 2022



Hole ID	Zone/Deposit	From (m)	To (m)	Length (m)	Au (g/t)	UTM East	UTM North	Elevation	Azimuth °	Dip °	Hole Length (m)
NBRC098	Nyam	15.0	19.0	4.0	0.88	530925	638536	136	300	-60	126
and		28.0	30.0	2.0	0.58						
and		44.0	46.0	2.0	0.45						
and		52.0	54.0	2.0	0.56						
NBRC099	Nyam	13.0	35.0	22.0	0.34	530901	638474	112	300	-60	130
and		46.0	48.0	2.0	0.43						
and		80.0	84.0	4.0	0.44						
and		110.0	112.0	2.0	0.25						
including		121.0	123.0	2.0	0.29						
NBRC100	Nyam	2.0	6.0	4.0	0.83	530813	638335	78	300	-60	120
and		16.0	28.0	12.0	0.77						
NBRC101	Nyam	2.0	3.0	1.0	0.58	530817	638367	100	300	-60	83
and		6.0	11.0	5.0	0.36						
and		73.0	75.0	2.0	0.43						
NBRC102	Nyam	32.0	46.0	14.0	0.24	530848	638350	89	300	-60	120
and		52.0	57.0	5.0	0.40						
and		75.0	77.0	2.0	0.42						
NBRC103	Nyam	11.0	23.0	12.0	0.89	530854	638384	85	300	-60	126
and		43.0	44.0	1.0	0.34						
NBRC104	Nyam	78.0	98.0	20.0	0.84	530849	638314	87	300	-60	120
and		108.0	119.0	11.0	0.87						
NBRC105	Nyam	0.0	11.0	11.0	0.63	530737	638212	89	300	-60	132
and		22.0	41.0	19.0	0.38						
and		90.0	96.0	6.0	0.40						
NBRC106	Nyam	3.0	4.0	1.0	1.88	530548	637825	77	300	-60	138
and		41.0	45.0	4.0	0.50						
and		67.0	78.0	11.0	1.08						

Newcore Gold Ltd. | Enchi Gold Project

2020 - 2022 Drill Results

Table accompanies news release dated March 7, 2022



Hole ID	Zone/Deposit	From (m)	To (m)	Length (m)	Au (g/t)	UTM East	UTM North	Elevation	Azimuth °	Dip °	Hole Length (m)
NBRC107	Nyam	8.0	12.0	4.0	0.52	530547	637889	78	300	-60	66
and		20.0	22.0	2.0	0.54						
and		30.0	34.0	4.0	0.63						
NBDD048	Nyam	82.0	84.0	2.0	0.53	530341	637217	96	300	-60	319.2
and		182.0	183.0	1.0	0.84						
and		207.0	208.0	1.0	0.81						
and		212.0	213.0	1.0	0.30						
and		227.0	229.0	2.0	0.37						
and		236.0	249.0	13.0	4.51						
including		237.5	245.2	7.7	7.40						
and		269.0	271.0	2.0	1.24						
and		295.7	299.0	3.3	0.69						
NBDD049	Nyam	114.0	115.0	1.0	0.72	530629	637594	99	300	-62	382.3
and		121.2	122.7	1.5	1.42						
and		255.5	258.7	3.5	0.90						
and		307.0	310.0	3.0	0.27						
and		323.0	342.0	19.0	0.37						
including		327.0	335.0	8.0	0.54						
and		361.0	364.0	3.0	0.67						
NBDD050	Nyam	116.0	117.5	1.5	0.35	530617	637648	107	300	-63	337.3
and		159.0	160.5	1.5	0.30						
and		183.3	186.0	2.7	0.33						
and		211.0	213.0	2.0	0.81						
and		277.0	281.7	4.7	0.26						
and		293.0	300.0	7.0	0.45						
and		320.0	321.0	1.0	0.41						
and		332.5	333.6	1.5	0.57						

Newcore Gold Ltd. | Enchi Gold Project

2020 - 2022 Drill Results

Table accompanies news release dated March 7, 2022



Hole ID	Zone/Deposit	From (m)	To (m)	Length (m)	Au (g/t)	UTM East	UTM North	Elevation	Azimuth °	Dip °	Hole Length (m)
NBDD051	Nyam	45.8	46.4	0.6	0.33	530286	637133	75	300	-63	360.7
and		65.0	66.8	1.8	0.82						
and		90.0	91.0	1.0	0.49						
and		105.0	107.1	2.1	0.23						
and		240.0	242.2	2.2	0.34						
and		245.0	247.6	2.6	0.42						
and		254.0	266.0	12.0	0.65						
and		274.0	276.0	2.0	4.57						
and		305.0	306.8	1.8	1.81						
NBDD052	Nyam	207.0	212.0	5.0	1.47	530677	637738	105	300	-63	393.7
and		280.0	297.0	17.0	0.31						
and		321.0	336.0	15.0	3.21						
including		322.0	330.0	8.0	5.57						
NBDD053	Nyam	172.0	174.0	2.0	0.82	530628	637680	109	300	-63	382.4
and		253.0	254.0	1.0	0.74						
and		258.0	275.0	17.0	0.50						
and		291.2	300.1	8.9	1.54						
including		291.2	293.0	1.8	3.78						
including		297.0	298.0	1.0	4.20						
and		311.4	314.6	3.2	0.58						
and		326.6	337.2	10.6	0.37						
NBDD054	Nyam	167.0	170.0	3.0	1.77	530672	637613	118	300	-63	466.7
and		373.4	374.5	1.1	1.38						
and		390.0	397.0	30.0	0.34						
and		423.9	431.0	7.1	0.98						
including		428.4	429.0	0.6	3.52						

Newcore Gold Ltd. | Enchi Gold Project

2020 - 2022 Drill Results

Table accompanies news release dated March 7, 2022



Hole ID	Zone/Deposit	From (m)	To (m)	Length (m)	Au (g/t)	UTM East	UTM North	Elevation	Azimuth °	Dip °	Hole Length (m)
NBDD055	Nyam	211.0	213.0	2.0	0.29	530401	637334	92	300	-63	337.4
		248.8	250.0	1.2	1.17						
		263.0	265.0	2.0	0.74						
		268.0	270.0	2.0	0.32						
		276.0	284.0	8.0	1.57						
		279.0	281.2	2.2	2.64						
NBDD056	Nyam	100.0	102.3	2.3	1.49	530364	637280	95	300	-63	331.4
		248.7	273.5	24.8	1.62						
		248.7	257.7	9.0	3.17						
		278.0	291.0	13.0	0.67						
		303.4	305.3	1.9	0.46						
NKRC001	Nkwanta	no significant results				525094	633089	101	300	-55	100
KKRC017A and and including	Kwakyekrom	45.0	48.0	3.0	0.52	528698	634833	127	298	-60	150
		69.0	70.0	1.0	1.17						
		89.0	120.0	31.0	0.46						
		107.0	120.0	13.0	0.72						
KKRC018 and and	Kwakyekrom	35.0	39.0	4.0	0.29	528658	634784	129	298	-60	120
		86.0	92.0	6.0	0.80						
		99.0	110.0	11.0	2.35						
KKRC019 and including and incl. and and	Kwakyekrom	4.0	7.0	3.0	0.36	528611	634738	128	298	-60	120
		58.0	78.0	20.0	0.36						
		59.0	63.0	4.0	0.50						
		70.0	76.0	6.0	0.64						
		88.0	92.0	4.0	0.38						
		102.0	104.0	2.0	0.50						
KKRC020 and and and	Kwakyekrom	26.0	28.0	2.0	0.79	528598	634714	133	298	-60	110
		44.0	47.0	3.0	0.43						
		60.0	75.0	15.0	0.48						
		79.0	83.0	4.0	1.04						

Newcore Gold Ltd. | Enchi Gold Project

2020 - 2022 Drill Results

Table accompanies news release dated March 7, 2022



Hole ID	Zone/Deposit	From (m)	To (m)	Length (m)	Au (g/t)	UTM East	UTM North	Elevation	Azimuth °	Dip °	Hole Length (m)
KKRC021	Kwakyekrom	52.0	69.0	17.0	0.57	528592	634693	132	298	-60	114
and		97.0	104.0	7.0	0.94						
KKRC022	Kwakyekrom	41.0	67.0	26.0	0.51	528555	634617	124	298	-60	114
including		59.0	66.0	5.0	1.59						
and		101.0	104.0	3.0	0.57						
KKRC023	Kwakyekrom	34.0	40.0	6.0	4.71	528542	634595	117	298	-60	122
and		60.0	66.0	6.0	0.34						
KKRC024	Kwakyekrom	35.0	38.0	3.0	0.77	528550	634557	104	298	-60	130
and		59.0	74.0	15.0	0.44						
and		104.0	113.0	9.0	0.23						
KKRC025	Kwakyekrom	0.0	18.0	18.0	0.45	528502	634580	103	298	-60	100
including		13.0	17.0	4.0	1.00						
and		23.0	29.0	6.0	0.57						
and		69.0	77.0	8.0	0.21						
and		89.0	100.0	11.0	0.63						
KKRC026	Kwakyekrom	20.0	24.0	4.0	1.32	528614	634705	128	298	-60	162
and		70.0	73.0	3.0	0.44						
and		80.0	94.0	14.0	1.69						
and		120.0	121.0	1.0	0.44						
and		126.0	128.0	2.0	0.63						
and		138.0	141.0	3.0	0.31						
KKRC027	Kwakyekrom	1.0	3.0	2.0	0.29	528611	634689	128	298	-60	168
and		49.0	51.0	2.0	0.42						
and		78.0	81.0	3.0	0.39						
and		84.0	101.0	17.0	0.91						

Newcore Gold Ltd. | Enchi Gold Project

2020 - 2022 Drill Results

Table accompanies news release dated March 7, 2022



Hole ID	Zone/Deposit	From (m)	To (m)	Length (m)	Au (g/t)	UTM East	UTM North	Elevation	Azimuth °	Dip °	Hole Length (m)
KKRC028	Kwakyekrom	111.0	137.0	26.0	1.43	528632	634668	126	298	-60	213
including		115.0	124.0	9.0	3.31						
and		149.0	157.0	8.0	0.34						
and		162.0	167.0	5.0	0.69						
and		176.0	180.0	4.0	0.39						
KKRC029	Kwakyekrom	21.0	45.0	24.0	0.89	528574	634699	133	298	-60	126
and		54.0	56.0	2.0	0.41						
and		116.0	118.0	2.0	0.35						
and		123.0	125.0	2.0	0.43						
KKRC030	Kwakyekrom	65.0	66.0	1.0	0.42	528653	634733	127	298	-60	180
and		68.0	69.0	1.0	0.46						
and		109.0	127.0	18.0	0.97						
and		145.0	147.0	2.0	0.43						
KKRC031	Kwakyekrom	30.0	32.0	2.0	0.78	528682	634774	131	298	-60	186
and		114.0	124.0	10.0	2.97						
and		162.0	168.0	6.0	0.88						
and		181.0	184.0	3.0	0.36						
KKRC032	Kwakyekrom	14.0	24.0	10.0	0.32	528570	634723	134	298	-60	114
and		56.0	63.0	7.0	0.40						
KKRC033	Kwakyekrom	26.0	28.0	2.0	0.33	528569	634584	109	298	-60	126
and		47.0	49.0	2.0	0.41						
and		69.0	75.0	6.0	1.19						
KKRC034	Kwakyekrom	14.0	46.0	32.0	0.68	528517	634607	124	298	-60	102
and		67.0	74.0	7.0	0.58						
and		90.0	95.0	5.0	0.34						
KKRC035	Kwakyekrom	0.0	7.0	7.0	0.46	528532	634631	125	298	-60	108
and		17.0	25.0	8.0	0.82						
and		39.0	41.0	2.0	0.30						

Newcore Gold Ltd. | Enchi Gold Project

2020 - 2022 Drill Results

Table accompanies news release dated March 7, 2022



Hole ID	Zone/Deposit	From (m)	To (m)	Length (m)	Au (g/t)	UTM East	UTM North	Elevation	Azimuth °	Dip °	Hole Length (m)
KKRC036	Kwakyekrom	19.0	22.0	3.0	0.49	528625	634796	130	298	-60	114
and		28.0	31.0	3.0	0.41						
and		54.0	61.0	7.0	1.95						
and		93.0	114.0	21.0	0.41						
KKRC037	Kwakyekrom	44.0	46.0	2.0	0.35	528661	634846	126	298	-60	110
and		88.0	92.0	4.0	0.49						
and		105.0	107.0	2.0	4.12						
KKRC038	Kwakyekrom	36.0	29.0	3.0	0.38	528738	634809	128	298	-60	200
and		97.0	111.0	14.0	0.35						
and		126.0	128.0	2.0	0.37						
and		131.0	143.0	12.0	0.83						
and		153.0	170.0	17.0	1.44						
KKRC039	Kwakyekrom	28.0	38.0	10.0	0.31	528692	634909	129	298	-60	129
KKRC040	Kwakyekrom	12.0	39.0	27.0	0.34	528741	634889	127	298	-60	162
and		95.0	99.0	4.0	0.29						
and		107.0	109.0	2.0	1.29						
and		116.0	120.0	4.0	0.47						
KKRC041	Kwakyekrom	0.0	53.0	53.0	0.79	528466	634474	104	298	-60	120
and		70.0	84.0	14.0	0.45						
KKRC042	Kwakyekrom	0.0	2.0	2.0	0.33	528440	634487	108	298	-60	100
and		38.0	39.0	1.0	0.50						
and		48.0	50.0	2.0	0.35						
and		56.0	62.0	6.0	0.47						
KKRC043	Kwakyekrom	73.0	83.0	10.0	1.51	528580	634606	123	298	-60	144
and		89.0	92.0	3.0	1.16						
and		138.0	140.0	2.0	0.90						
KKRC044	Kwakyekrom	14.0	22.0	8.0	0.49	528362	634281	143	298	-60	114
KKRC045	Kwakyekrom	80.0	87.0	7.0	1.03	528409	634257	142	298	-60	162

Newcore Gold Ltd. | Enchi Gold Project

2020 - 2022 Drill Results

Table accompanies news release dated March 7, 2022



Hole ID	Zone/Deposit	From (m)	To (m)	Length (m)	Au (g/t)	UTM East	UTM North	Elevation	Azimuth °	Dip °	Hole Length (m)
KKRC046	Kwakyekrom	55.0	79.0	24.0	0.50	528407	634372	123	298	-60	96
including		58.0	72.0	14.0	0.61						
KKRC047	Kwakyekrom	74.0	76.0	2.0	0.33	528454	634348	124	298	-60	138
and		88.0	96.0	8.0	0.41						
KKRC048	Kwakyekrom	24.0	26.0	2.0	0.46	528499	634456	106	298	-60	150
and		58.0	73.0	15.0	1.29						
and		111.0	122.0	11.0	1.86						
and		144.0	147.0	3.0	0.69						
KKRC049	Kwakyekrom	60.0	67.0	7.0	0.34	528539	634435	109	298	-60	213
and		117.0	120.0	3.0	0.91						
and		197.0	200.0	3.0	0.40						
and		208.0	213.0	5.0	2.33						
KKRC050	Kwakyekrom	0.0	3.0	3.0	0.37	528572	634653	131	298	-60	132
and		25.0	28.0	3.0	0.32						
and		36.0	56.0	20.0	0.55						
and		97.0	118.0	21.0	0.46						
including		97.0	108.0	11.0	0.71						
KKRC051	Kwakyekrom	148.0	198.0	50.0	0.61	528656	634656	119	298	-60	246
including		164.0	173.0	9.0	1.36						
and		210.0	212.0	2.0	0.44						
and		225.0	227.0	2.0	1.02						
and	241.0	244.0	3.0	0.63							
KKRC052	Kwakyekrom	54.0	55.0	1.0	0.64	528640	634698	122	298	-60	192
and		75.0	76.0	1.0	0.52						
and		112.0	132.0	20.0	1.19						
including		113.0	118.0	5.0	2.75						
KKRC053	Kwakyekrom	145.0	149.0	4.0	0.90	528667	634679	120	298	-60	240
and		172.0	190.0	18.0	0.75						
and		210.0	212.0	2.0	0.38						

Newcore Gold Ltd. | Enchi Gold Project

2020 - 2022 Drill Results

Table accompanies news release dated March 7, 2022



Hole ID	Zone/Deposit	From (m)	To (m)	Length (m)	Au (g/t)	UTM East	UTM North	Elevation	Azimuth °	Dip °	Hole Length (m)
KKRC054	Kwakyekrom	98.0	109.0	11.0	0.58	528602	634632	128	298	-60	156
KKRC055	Kwakyekrom	8.0	12.0	4.0	1.21	528590	634565	106	298	-60	168
and		98.0	99.0	1.0	0.70						
and		108.0	121.0	13.0	0.94						
and		162.0	163.0	1.0	0.54						
KKRC056	Kwakyekrom	81.0	88.0	7.0	0.23	528600	634591	114	298	-60	189
and		105.0	106.0	1.0	0.45						
and		110.0	125.0	15.0	0.96						
including		110.0	119.0	9.0	1.46						
and		129.0	130.0	1.0	0.35						
and		134.0	141.0	7.0	0.23						
and		160.0	189.0	29.0	0.94						
including		170.0	176.0	6.0	2.65						
KKRC057	Kwakyekrom	90.0	91.0	1.0	0.31	528636	634623	120	298	-60	202
and		119.0	121.0	2.0	0.31						
and		131.0	148.0	17.0	0.25						
and		192.0	194.0	2.0	0.29						
KKRC058	Kwakyekrom	70.0	72.0	2.0	0.53	528812	634852	113	298	-60	267
and		78.0	80.0	2.0	0.28						
including		85.0	87.0	2.0	0.45						
and		91.0	92.0	1.0	0.32						
and		105.0	106.0	1.0	0.56						
and		146.0	147.0	1.0	0.33						
and		171.0	174.0	3.0	1.47						
and		179.0	181.0	2.0	0.28						
and		194.0	195.0	1.0	0.39						
and		230.0	232.0	2.0	0.64						

Newcore Gold Ltd. | Enchi Gold Project

2020 - 2022 Drill Results

Table accompanies news release dated March 7, 2022



Hole ID	Zone/Deposit	From (m)	To (m)	Length (m)	Au (g/t)	UTM East	UTM North	Elevation	Azimuth °	Dip °	Hole Length (m)
KKRC059	Kwakyekrom	148.0	151.0	3.0	1.13	528776	634792	118	298	-60	276
and		169.0	171.0	2.0	0.50						
and		177.0	184.0	7.0	0.63						
and		217.0	218.0	1.0	1.63						
KKRC060	Kwakyekrom	148.0	156.0	8.0	0.66	528710	634749	127	298	-60	234
and		168.0	177.0	9.0	0.71						
and		189.0	190.0	1.0	1.41						
KKRC061C	Kwakyekrom	154.0	156.0	2.0	0.45	528696	634718	117	298	-60	210
KKRC062	Kwakyekrom		no significant results			528326	634188	167	298	-60	107
KKRC063	Kwakyekrom	86.0	89.0	3.0	0.44	528364	634167	169	298	-60	186
and		123.0	124.0	1.0	0.51						
and		154.0	155.0	1.0	0.78						
KKRC064	Kwakyekrom	84.0	85.0	1.0	0.61	528384	633885	129	298	-60	144
and		114.0	123.0	9.0	0.50						
KKRC065	Kwakyekrom	94.0	105.0	11.0	0.90	528409	633870	123	298	-60	200
and		141.0	144.0	3.0	0.64						
KKRC066	Kwakyekrom		no significant results			529459	636214	80	298	-60	138
KKRC067	Kwakyekrom	35.0	36.0	1.0	0.20	529362	636053	110	298	-60	152
KKRC068	Kwakyekrom	81.0	83.0	2.0	0.22	529534	636175	93	298	-60	144
KKRC069	Kwakyekrom		no significant results			529156	635702	113	298	-60	150
KKRC070	Kwakyekrom	31.0	32.0	1.0	0.46	529236	635656	109	298	-60	160
and		128.0	132.0	4.0	0.37						
and		141.0	144.0	3.0	1.54						
KKRC071	Kwakyekrom	32.0	33.0	1.0	0.24	529055	635525	90	298	-60	162
and		64.0	65.0	1.0	0.53						

Newcore Gold Ltd. | Enchi Gold Project

2020 - 2022 Drill Results

Table accompanies news release dated March 7, 2022



Hole ID	Zone/Deposit	From (m)	To (m)	Length (m)	Au (g/t)	UTM East	UTM North	Elevation	Azimuth °	Dip °	Hole Length (m)
KKRC072	Kwakyekrom	3.0	8.0	5.0	0.21	529126	635490	96	298	-60	166
and		12.0	15.0	3.0	0.23						
and		22.0	23.0	1.0	0.27						
and		29.0	30.0	1.0	0.36						
and		92.0	93.0	1.0	2.70						
and		155.0	156.0	1.0	0.31						
KKRC073	Kwakyekrom			no significant results		529260	635869	96	298	-60	156
KKRC074	Kwakyekrom	91.0	94.0	3.0	0.41	529331	635828	88	298	-60	162
KKRC075	Kwakyekrom	53.0	60.0	7.0	2.31	528961	635355	100	298	-60	150
and		79.0	82.0	3.0	0.22						
and		105.0	108.0	3.0	0.33						
KKRC076	Kwakyekrom	46.0	47.0	1.0	0.21	529022	635319	97	298	-60	200
and		119.0	132.0	13.0	1.14						
and		156.0	157.0	1.0	0.75						
and		174.0	178.0	4.0	0.50						
and		185.0	186.0	1.0	0.45						
and		189.0	191.0	2.0	2.29						
KKRC077	Kwakyekrom	23.0	29.0	6.0	0.52	528913	635267	112	298	-60	162
and		153.0	154.0	1.0	0.30						
KKRC078	Kwakyekrom	63.0	78.0	15.0	0.28	528983	635231	97	298	-60	192
including		72.0	74.0	2.0	1.23						
and		136.0	138.0	2.0	0.71						
and		161.0	184.0	23.0	0.56						
including		172.0	174.0	2.0	1.79						

Newcore Gold Ltd. | Enchi Gold Project

2020 - 2022 Drill Results

Table accompanies news release dated March 7, 2022



Hole ID	Zone/Deposit	From (m)	To (m)	Length (m)	Au (g/t)	UTM East	UTM North	Elevation	Azimuth °	Dip °	Hole Length (m)
KKRC079	Kwakyekrom	104.0	106.0	2.0	0.23	528950	635137	90	298	-60	210
and		147.0	152.0	5.0	0.67						
and		155.0	157.0	2.0	0.60						
and		160.0	166.0	6.0	0.73						
and		182.0	184.0	2.0	0.72						
and		198.0	203.0	5.0	1.84						
and		208.0	210.0	2.0	2.61						
KKRC080	Kwakyekrom	6.0	7.0	1.0	0.30	528825	635093	94	298	-60	162
and		40.0	43.0	3.0	1.67						
and		50.0	51.0	1.0	0.53						
and		81.0	110.0	29.0	0.99						
and		122.0	123.0	1.0	0.32						
and		129.0	132.0	3.0	0.54						
and		145.0	147.0	2.0	0.25						
KKRC081	Kwakyekrom	104.0	105.0	1.0	0.24	528901	635052	98	298	-60	156
KKRC082	Kwakyekrom	39.0	49.0	10.0	0.36	528840	634942	102	298	-60	150
and		57.0	59.0	2.0	0.43						
and		62.0	64.0	2.0	0.45						
and		116.0	117.0	1.0	0.88						
KKRC083	Kwakyekrom	53.0	62.0	9.0	0.77	528894	634916	98	298	-60	188
and		166.0	169.0	3.0	0.39						
KKRC084	Kwakyekrom	80.0	84.0	4.0	0.71	529438	635997	87	298	-60	168
KJRC011	Kojina Hill		no significant results			528887	637281	110	300	-65	170
KJRC012	Kojina Hill	218.0	222.0	4.0	1.34	528887	637281	110	300	-75	252
and		229.0	230.0	1.0	0.83						

Newcore Gold Ltd. | Enchi Gold Project

2020 - 2022 Drill Results

Table accompanies news release dated March 7, 2022



Hole ID	Zone/Deposit	From (m)	To (m)	Length (m)	Au (g/t)	UTM East	UTM North	Elevation	Azimuth °	Dip °	Hole Length (m)
KJRC013	Kojina Hill	6.0	13.0	7.0	0.33	528897	637243	123	300	-60	170
and		83.0	113.0	30.0	0.39						
including		83.0	91.0	8.0	0.51						
and incl.		94.0	99.0	5.0	0.56						
and incl.		109.0	113.0	4.0	0.57						
KJRC014	Kojina Hill	57.0	60.0	3.0	0.37	528897	637243	123	300	-75	288
and		209.0	212.0	3.0	0.37						
KJRC015	Kojina Hill	126.0	127.0	1.0	0.40	528867	637240	130	300	-60	192
and		139.0	140.0	1.0	0.42						
KJRC016	Kojina Hill	174.0	175.0	1.0	0.31	528871	637239	127	300	-75	252
and		208.0	209.0	1.0	0.30						
and		244.0	246.0	2.0	0.33						
KJRC017	Kojina Hill	108.0	112.0	4.0	0.86	528838	637203	149	300	-65	162
and		119.0	122.0	3.0	0.28						
and		125.0	145.0	20.0	1.09						
including		125.0	129.0	4.0	2.52						
and		155.0	156.0	1.0	0.47						
KJRC018	Kojina Hill	48.0	50.0	2.0	0.30	528860	637219	141	300	-65	150
and		98.0	102.0	4.0	0.68						
KJRC019	Kojina Hill	81.0	89.0	8.0	0.50	528871	637239	129	270	-70	282
and		121.0	122.0	1.0	0.60						
KJRC020	Kojina Hill	67.0	69.0	2.0	0.44	528805	637400	97	120	-55	90
KJRC021	Kojina Hill		no significant results			528774	637413	88	120	-55	132
KJRC022	Kojina Hill	2.0	3.0	1.0	0.62	528789	637334	113	120	-55	120
and		44.0	49.0	5.0	1.68						
and		61.0	120.0	59.0	0.79						
including		80.0	90.0	10.0	3.03						
KJRC023	Kojina Hill		no significant results			528766	637358	64	120	-55	168

Newcore Gold Ltd. | Enchi Gold Project

2020 - 2022 Drill Results

Table accompanies news release dated March 7, 2022



Hole ID	Zone/Deposit	From (m)	To (m)	Length (m)	Au (g/t)	UTM East	UTM North	Elevation	Azimuth °	Dip °	Hole Length (m)
KJRC024	Kojina Hill	86.0	100.0	14.0	0.87	528786	637377	107	120	-55	160
and		117.0	132.0	15.0	1.44						
ERDD011	Eradi	118.7	120.0	1.3	0.36	539579	650489	165	130	-60	179.2
and		148.7	150.0	1.3	0.73						
and		166.0	169.0	3.0	0.28						
ERDD012	Eradi	25.0	26.0	1.0	0.35	539818	650767	211	130	-60	79.7
ERDD012A	Eradi	77.0	78.0	1.0	0.95	539823	650758	212	130	-60	260.2
and		172.7	173.5	0.8	0.31						
and		192.0	193.0	1.0	0.39						
and		256.0	257.0	1.0	0.36						
ERDD013	Eradi	19.6	26.0	6.4	0.35	539765	650539	161	130	-60	81.1
ERDD014	Eradi	102.5	103.7	1.2	0.48	539860	650741	216	130	-60	182.2
ERDD015	Eradi	9.7	14.3	4.6	0.87	539729	650573	163	130	-60	158.2
and		65.8	72.9	7.1	0.61						
and		105.6	107.8	2.2	0.93						
ERDD016	Eradi	6.8	8.6	1.8	0.48	539878	650616	197	130	-60	102.2
and		34.0	34.7	0.7	0.57						
ERDD017	Eradi	7.2	8.6	1.4	0.49	539848	650644	203	130	-60	102
and		75.7	77.4	1.7	0.95						
and		79.7	81.0	1.3	0.27						
and		99.7	100.7	1.0	0.38						
ERDD018	Eradi	10.2	10.8	0.6	0.39	540021	650784	193	130	-60	152.2
and		34.6	35.7	1.1	0.77						
ERDD019	Eradi	25.0	29.0	4.0	0.44	540284	651078	127	130	-60	173.1
and		75.9	77.3	1.4	0.76						

Newcore Gold Ltd. | Enchi Gold Project

2020 - 2022 Drill Results

Table accompanies news release dated March 7, 2022



Hole ID	Zone/Deposit	From (m)	To (m)	Length (m)	Au (g/t)	UTM East	UTM North	Elevation	Azimuth °	Dip °	Hole Length (m)
ERDD020	Eradi	10.0	11.0	1.0	0.31	540466	651192	178	130	-60	158.2
and		15.2	19.7	4.5	0.43						
and		41.2	89.0	47.8	0.89						
including		41.2	43.7	2.5	6.44						
and incl.		54.2	60.0	5.8	2.14						
and		92.8	93.8	1.0	2.45						
ERDD021	Eradi	75.2	79.2	4.0	0.56	540551	651237	186	130	-60	224
and		124.0	125.0	1.0	1.61						
and		198.3	204.0	3.5	0.41						
ERDD022	Eradi	80.0	82.0	2.0	0.95	540356	651175	159	130	-60	185.2
and		88.0	89.5	1.5	0.53						
and		91.0	92.0	1.0	0.34						
and		152.0	154.0	2.0	0.56						
and		168.0	169.0	1.0	0.47						
ERDD023	Eradi	77.4	84.0	6.6	0.60	540304	651188	113	130	-60	152
and		126.0	127.0	1.0	0.31						

1. Intervals reported are hole lengths with true width estimated to be 75 - 85%.

2. Length-weighted averages from uncut assays.

3. All drilling completed by independent contractor.

4. All drilling samples sealed on site and delivered directly to independent lab Intertek Mineral Limited located in Tarkwa, Ghana for preparation and 50g Fire Assay with AAS finish.

5. QA/QC procedures include industry standard inclusion of standards, blanks, and duplicates in all sample batches.