



## **Newcore Gold Drilling Confirms and Expands New Discovery, Intersects 1.80 g/t Gold over 27.0 Metres and 1.67 g/t Gold over 17.0 Metres at the Enchi Gold Project, Ghana**

*Drilling at Tokosea, a New Discovery at Enchi, Intersects Additional High-Grade, Wide Zones of Gold Mineralization from Surface, Expanding Mineralization Along Strike and Down Dip*

April 20, 2022

TSX-V: NCAU, OTCQX: NCAUF

**Vancouver, BC - Newcore Gold Ltd. ("Newcore" or the "Company")** (TSX-V: NCAU, OTCQX: NCAUF) is pleased to announce drill results from the 90,000 metre drill program underway at the Company's 100% owned Enchi Gold Project ("Enchi" or the "Project") in Ghana. First pass Reverse Circulation ("RC") drilling at the Tokosea Gold Target ("Tokosea"), completed as part of the inaugural drill program on the grassroot target at Enchi, intersected multiple wide zones of gold mineralization from surface. Drill results included 1.80 grams per tonne gold ("g/t Au") over 27.0 metres ("m") from 30 m, including 4.13 g/t Au over 3.0 m from 31 m, and 1.67 g/t Au over 17.0 m from 131 m, including 18.17 g/t Au over 1.0 m from 131 m. Tokosea is a new greenfield discovery at Enchi where first pass drilling has highlighted the strong potential to delineate additional resources across the 216 km<sup>2</sup> land package at Enchi.

### **Highlights from First Pass Drilling at Tokosea**

- **Drilling at Tokosea has confirmed and expanded the new greenfield discovery, highlighting the strong potential to delineate additional gold resources at Enchi:**
  - This drilling was completed as part of the first pass discovery drilling completed at Tokosea in 2022, with first results announced [March 7, 2022](#).
  - Inaugural drilling tested mineralization to an average vertical depth of only 75 metres.
  - Tokosea is outlined on surface by a six-kilometre-long and two-to-three-kilometre-wide gold-in-soil anomaly. With only 56 holes drilled to date on the target, the strong results highlight the possibility of a new area for potential mineral resources at Enchi.
- **Drilling at Tokosea has expanded the gold mineralization, intersecting multiple structures in the upper portion of the sulphides, including:**
  - Hole TORC045 intersected multiple zones of mineralization throughout the drill hole. Near surface, the hole intersected 1.80 g/t Au over 27.0 m from 30 m, including 4.13 g/t Au over 3.0 m from 31 m, 3.41 g/t Au over 3.0 m from 38 m, and 3.76 g/t Au over 3.0 m from 47 m. A zone near the end of the hole intersected 0.93 g/t Au over 15.0 m from 134 m, including 3.22 g/t Au over 3.0 m from 140 m.
  - Hole TORC032 intersected 1.67 g/t Au over 17.0 m from 131 m, including 18.17 g/t Au over 1.0 m from 131 m and a second zone with 3.36 g/t Au over 5.0 m from 105 m.
- **Drilling on a series of sub-parallel structures intersected shallow oxide mineralization:**
  - Hole TORC048 intersected 0.40 g/t Au over 32.0 m from surface, including 2.10 g/t Au over 3.0 m from 27 m and a second zone with 0.74 g/t Au over 8.0 m from 87 m.
  - Hole TORC047 intersected 1.20 g/t Au over 10.0 m from surface, including 4.26 g/t Au over 2.0 m from 1 m and a second zone with 0.99 g/t Au over 4.0 m from 26 m.

Luke Alexander, President and CEO of Newcore stated, "These results are the continuation of the results we released last month, confirming and expanding one of three new discoveries at our Enchi Gold Project. These results and new discoveries confirm the potential for Enchi to host additional deposits. Drilling at Tokosea has successfully delineated high-grade, wide zones of mineralization near surface with drilling on the target having only tested mineralization to an average vertical depth of 75 metres. We have now defined mineralization across a strike length of four-kilometres, with only a small portion of this six-kilometre-long anomaly tested to date. Enchi's 216 km<sup>2</sup> land package covers 40 kilometres of Ghana's prolific Bibiani Shear Zone, a gold belt which hosts several large, multi-million-ounce gold deposits. We look forward to continuing our systematic approach to exploration and defining the potential of our district scale Enchi Gold Project through the drill bit."

This news release reports results for 30 RC holes totalling 3,889 m (TORC027 to TORC056) targeting the Tokosea Gold Target. 24 of the 30 holes intersected gold mineralization. These results follow up on the **initial 26 RC holes** which made the discovery at Tokosea.

Select assay results from the 30 holes of the drill program reported in this release are below:

**Table 1 - Enchi Gold Project Drill Highlights**

Hole ID	Zone/Deposit	From (m)	To (m)	Length (m)	Au (g/t)
<b>TORC045</b>	Tokosea	30.0	57.0	<b>27.0</b>	<b>1.80</b>
including		31.0	34.0	<b>3.0</b>	<b>4.13</b>
including		38.0	41.0	<b>3.0</b>	<b>3.41</b>
including		47.0	50.0	<b>3.0</b>	<b>3.76</b>
and		78.0	86.0	<b>8.0</b>	<b>0.58</b>
and		134.0	149.0	<b>15.0</b>	<b>0.93</b>
including		140.0	143.0	<b>3.0</b>	<b>3.22</b>
<b>TORC032</b>	Tokosea	105.0	110.0	<b>5.0</b>	<b>3.36</b>
and		131.0	148.0	<b>17.0</b>	<b>1.67</b>
including		131.0	132.0	<b>1.0</b>	<b>18.17</b>
<b>TORC031</b>	Tokosea	0.0	4.0	<b>4.0</b>	<b>1.73</b>
and		26.0	30.0	<b>4.0</b>	<b>1.31</b>
and		97.0	115.0	<b>18.0</b>	<b>0.83</b>
including		107.0	112.0	<b>5.0</b>	<b>1.89</b>
<b>TORC048</b>	Tokosea	0.0	32.0	<b>32.0</b>	<b>0.40</b>
including		27.0	30.0	<b>3.0</b>	<b>2.10</b>
and		87.0	95.0	<b>8.0</b>	<b>0.74</b>
<b>TORC047</b>	Tokosea	0.0	10.0	<b>10.0</b>	<b>1.20</b>
including		1.0	3.0	<b>2.0</b>	<b>4.26</b>
and		26.0	30.0	<b>4.0</b>	<b>0.99</b>
<b>TORC034A</b>	Tokosea	5.0	20.0	<b>15.0</b>	<b>0.60</b>
including		17.0	18.0	<b>1.0</b>	<b>3.13</b>
<b>TORC046</b>	Tokosea	161.0	173.0	<b>12.0</b>	<b>0.62</b>
including		164.0	165.0	<b>1.0</b>	<b>6.27</b>

Notes:

1. See detailed table for complete results
2. Intervals reported are hole lengths with true width estimated to be 75 - 85%
3. Length-weighted averages from uncut assays

A plan map showing the drill hole locations can be viewed at:

[https://newcoregold.com/site/assets/files/5764/2022\\_04-ncau-nr-enchi-plan-map-tokosea-l.pdf](https://newcoregold.com/site/assets/files/5764/2022_04-ncau-nr-enchi-plan-map-tokosea-l.pdf)

A cross section showing drill results and highlights for hole TORC045 can be viewed at:

[https://newcoregold.com/site/assets/files/5764/2022\\_04-ncau-crosssection-torc045-l.pdf](https://newcoregold.com/site/assets/files/5764/2022_04-ncau-crosssection-torc045-l.pdf)

A complete list of the 2020 - 2022 drill results released to date, including hole details, can be viewed at:

[https://newcoregold.com/site/assets/files/5764/2022\\_04-ncau-enchi-2020-2022-drill-results-l.pdf](https://newcoregold.com/site/assets/files/5764/2022_04-ncau-enchi-2020-2022-drill-results-l.pdf)

## **Drilling at Tokosea**

Tokosea is a large, previously undrilled gold target at Enchi, located in the central portion of the property to the north of the Sewum Gold Deposit. Tokosea is outlined on surface by a six-kilometre-long and two-to-three-kilometre-wide gold-in-soil anomaly. First pass drilling at Tokosea now consists of 56 RC holes totalling 6,737 m (TORC001 to TORC056) designed to test gold-in-soil and trench anomalies. The wide spaced drilling tested several targets within a four-kilometre-by-two-kilometre area, with 47 of the 56 holes intersecting gold mineralization.

From the results reported in this release, 12 holes (TORC027 to TORC034A, TORC045 to TORC048) tested the central structure within the anomalous area at Tokosea, stepping out from the discovery drill hole TORC025 which intersected 3.52 g/t Au over 9 m from 74 m, including 7.36 g/t Au over 4 m from 77 m. This set of results has now extended the strike length of the drill tested portion of the central structure at Tokosea by one kilometre, to a total strike length of four kilometres, with mineralization intersected within both the oxides and sulphides.

Hole TORC045, completed on the south-central portion of the drill tested area, intersected multiple mineralized zones throughout the drill hole beginning at surface. Results included 1.80 g/t Au over 27.0 m from 30 m including 4.13 g/t Au over 3.0 m from 31 m, 3.41 g/t Au over 3.0 m from 38 m and 3.76 g/t Au over 3.0 m from 47 m. A second zone, near the end of the hole, intersected 0.93 g/t Au over 15.0 m from 134 m, including 3.22 g/t Au over 3.0 m from 140 m. A third zone intersected 0.58 g/t Au over 8.0 m from 78 m. Hole TORC034A, collared 120 metres west of TORC045 on the same section, intersected an adjacent structure with 0.60 g/t Au over 15.0 m from 5 m, including 3.13 g/t Au over 1.0 m from 17 m.

Hole TORC032, collared on the next section 200 metres north of TORC045, intersected 1.67 g/t Au over 17.0 m from 131 m, including 18.17 g/t Au over 1.0 m from 131 m and a second zone with 3.36 g/t Au over 5.0 m from 105 m. On the same section, hole TORC031 collared 75 metres east of TORC032 intersected the up-dip continuation of the upper zone in TORC032 returning 1.73 g/t Au over 4.0 m from surface and 1.31 g/t Au over 4.0 m from 26 m as well as the up-dip extension of the lower zone with 0.83 g/t Au over 18.0 m from 97 m including 1.89 g/t Au over 5.0 m from 107 m.

Drilling south of hole TORC045 on a series of sub-parallel structures intersected multiple mineralized zones including TORC048 with a wide zone of gold mineralization from surface returning 0.40 g/t Au over 32.0 m from surface, including 2.10 g/t Au over 3.0 m from 27 m and a second zone with 0.74 g/t Au over 8.0 m from 87 m. Hole TORC047, collared 200 metres south of TORC048, also returned gold mineralization from surface with 1.20 g/t Au over 10.0 m from surface, including 4.26 g/t Au over 2.0 m from 1 m and a second zone with

0.99 g/t Au over 4.0 m from 26 m. On the same section as hole TORC045, 200 metres north of TORC048, hole TORC046 intersected the down dip continuation of the sub-parallel zone in hole TORC034A returning 0.62 g/t Au over 12.0 m from 161 m, including 6.27 g/t Au over 1.0 m from 164 m.

10 holes (TORC035 to TORC044) tested a series of structures on the northern portion of the Tokosea anomaly approximately 1.5 kilometres north of TORC045. All holes intersected gold mineralization with up to four separate mineralized structures. To date the area has been tested by two sections of holes spaced 200 metres apart. Drill results include TORC044 with 0.43 g/t Au over 10.0 m from 14 m; TORC036 with 0.92 g/t Au over 3.0 m from 147 m, TORC043 with 2.12 g/t Au over 1.0 m from 84 m; and TORC039 with 0.23 g/t Au over 11.0 m from 5 m.

### **Enchi Gold Project Mineral Resource Estimate**

The Enchi Gold Project hosts a pit constrained Inferred Mineral Resource of 70.4 million tonnes grading 0.62 g/t Au containing 1.41 million ounces gold (see Newcore news release dated [June 8, 2021](#)). Mineral resource estimation practices are in accordance with CIM Estimation of Mineral Resource and Mineral Reserve Best Practice Guidelines (November 29, 2019) and follow CIM Definition Standards for Mineral Resources and Mineral Reserves (May 10, 2014), that are incorporated by reference into National Instrument 43-101 ("NI 43-101"). The Mineral Resource Estimate was prepared by independent qualified person Todd McCracken, P. Geo. of BBA E&C Inc. The technical report, titled "Preliminary Economic Assessment for the Enchi Gold Project, Enchi, Ghana" has an effective date of June 8, 2021, and is available under the Company's profile on SEDAR at [www.sedar.com](http://www.sedar.com).

### **2020 - 2022 Enchi Drilling Program**

A 90,000 metre discovery and resource expansion drilling program is underway at Enchi (anticipated completion in Q2 2022). The program includes both RC and diamond drilling and includes the first deeper drilling on the Project. This drill program includes testing extensions of the existing resource areas while also testing a number of high priority exploration targets outside of the Inferred Mineral Resource. Drilling is focused on step out extensions and exploration drilling at the Sewum, Boin, Nyam and Kwakyekrom Deposits. Additional drilling is also focused on previously drilled zones that are outside of the resource area (Kojina Hill and Eradi), along with first pass drilling to test a series of kilometre-scale gold-in-soil anomalous zones with no prior drilling (Sewum South, Tokosea and Nkwanta). All zones represent high priority targets based on geological, geochemical and geophysical surface work and previous trenching and drilling. For the total planned 90,000 metre drill program, assay results have now been received and released for 523 holes representing 83,064 metres.

### **Tokosea Gold Target**

The Tokosea Target is located in the central portion of the Enchi Gold Project and is one of the largest anomalous areas with gold-in-soil and associated geophysical anomalies. Tokosea is located 15 kilometres southeast of the town of Enchi, with nearby roads and power and further access provided by a series of drill roads. Tokosea is outlined on surface by a six-kilometre-long and two to three-kilometre-wide gold-in-soil anomaly. An airborne geophysical anomaly coincident with the area defines a series of sub-parallel and intersecting structures. Historic artisanal small scale open pit and underground mining has occurred on individual structures

dating as far back as the early 20<sup>th</sup> century. The area was untested by drilling prior to the current drill program. As part of the current drill program results have been received and released for 56 RC holes totalling 6,737 metres.

## Drill Hole Locations

**Table 2 - Enchi Gold Project Drill Hole Location Details**

Hole ID	UTM East	UTM North	Elevation	Azimuth °	Dip °	Length (m)
TORC027	523937	630780	142	120	-50	114
TORC028	524067	630710	134	120	-50	120
TORC029	524018	630724	136	120	-50	102
TORC030	523788	630451	112	120	-50	170
TORC031	523744	630489	131	120	-50	120
TORC032	523676	630518	135	120	-50	156
TORC033	523685	630319	114	120	-50	124
TORC034A	523640	630345	114	120	-50	160
TORC035	524244	631301	142	120	-50	130
TORC036	524182	631335	153	120	-50	162
TORC037	524518	631332	134	120	-50	137
TORC038	524425	631204	151	120	-50	126
TORC039	524357	631237	163	120	-50	156
TORC040	524319	631321	173	120	-50	138
TORC041	524457	631372	157	120	-50	136
TORC042	524401	631414	167	120	-50	126
TORC043	524342	631447	162	120	-50	102
TORC044	524288	631486	174	120	-50	108
TORC045	523739	630276	112	120	-50	150
TORC046	523492	630405	123	120	-50	180
TORC047	523130	630115	136	120	-50	138
TORC048	523153	630362	122	120	-50	100
TORC049	522211	628391	118	120	-50	120
TORC050	522156	628419	130	120	-50	144
TORC051	522349	628119	142	120	-50	120
TORC052	522310	628139	143	120	-50	114
TORC053	522241	628175	122	120	-50	108
TORC054	522179	628204	112	120	-50	126
TORC055	522195	628547	105	120	-50	102
TORC056	522183	628619	112	120	-50	100

## COVID-19 Protocols

Newcore's first priority is the health and safety of all employees, contractors, and local communities. The Company is following all Ghana guidelines and requirements related to COVID-19. The Company has implemented COVID-19 protocols for its ongoing drill program consisting of the mandatory use of personal protective equipment (including facemasks for all employees), maintaining social distancing, frequent hand washing, and daily temperature checks at the start of each shift.

## **Newcore Gold Best Practice**

Newcore is committed to best practice standards for all exploration, sampling and drilling activities. Drilling was completed by an independent drilling firm using industry standard RC and Diamond Drill equipment. Analytical quality assurance and quality control procedures include the systematic insertion of blanks, standards and duplicates into the sample strings. Samples are placed in sealed bags and shipped directly to Intertek Labs located in Tarkwa, Ghana for 50 gram gold fire assay.

## **Qualified Person**

Mr. Gregory Smith, P. Geo, Vice President of Exploration at Newcore, is a Qualified Person as defined by NI 43-101, and has reviewed and approved the technical data and information contained in this news release. Mr. Smith has verified the technical and scientific data disclosed herein and has conducted appropriate verification on the underlying data including confirmation of the drillhole data files against the original drillhole logs and assay certificates.

## **About Newcore Gold Ltd.**

Newcore Gold is advancing its Enchi Gold Project located in Ghana, Africa's largest gold producer<sup>(1)</sup>. The Project currently hosts an Inferred Mineral Resource of 1.41 million ounces of gold at 0.62 g/t<sup>(2)</sup>. Newcore Gold offers investors a unique combination of top-tier leadership, who are aligned with shareholders through their 27% equity ownership, and prime district scale exploration opportunities. Enchi's 216 km<sup>2</sup> land package covers 40 kilometres of Ghana's prolific Bibiani Shear Zone, a gold belt which hosts several 5 million-ounce gold deposits, including Kinross' Chirano mine 50 kilometers to the north. Newcore's vision is to build a responsive, creative and powerful gold enterprise that maximizes returns for shareholders.

## **On Behalf of the Board of Directors of Newcore Gold Ltd.**

Luke Alexander  
*President, CEO & Director*

### **For further information, please contact:**

Mal Karwowska | Vice President, Corporate Development and Investor Relations  
+1 604 484 4399  
info@newcoregold.com  
[www.newcoregold.com](http://www.newcoregold.com)

(1) Source: Production volumes for 2020 as sourced from the World Gold Council

(2) Notes for Inferred Mineral Resource Estimate:

1. CIM definition standards were followed for the resource estimate.
2. The 2021 resource models used ordinary kriging (OK) grade estimation within a three-dimensional block model with mineralized zones defined by wireframed solids and constrained by pits shell for Sewum, Boin and Nyam. Kwakryekrom used Inverse Distance squared (ID2).
3. A base cut-off grade of 0.2 g/t Au was used with a capping of gold grades varied by deposit and zone.
4. A US\$1,650/ounce gold price, open pit with heap leach operation was used to determine the cut-off grade of 0.2 g/t Au. Mining costs of US\$1.40 for oxides, US\$2.10 for transition, and US\$2.60 for fresh rock per mined tonne and G&A and milling costs of US\$6.83/milled tonne. The Inferred Mineral Resource Estimate is pit constrained.

5. Metallurgical recoveries have been applied to four individual deposits and in each case three material types (oxide, transition, and fresh rock) with average recoveries of 77% for Sewum, 79% for Boin, 60% for Nyam and 72% for Kwakyekrom.
6. A density of 2.20 g/cm<sup>3</sup> for oxide, 2.45 g/cm<sup>3</sup> for transition, and 2.70 g/cm<sup>3</sup> for fresh rock was applied.
7. Optimization pit slope angles varied based on the rock types.
8. Mineral Resources that are not mineral reserves do not have economic viability. Numbers may not add due to rounding.
9. These numbers are from the technical report titled "Preliminary Economic Assessment for the Enchi Gold Project, Enchi, Ghana", with an effective date of June 8, 2021, prepared for Newcore Gold by BBA E&C Inc. in accordance with National Instrument 43-101 *Standards of Disclosure for Mineral Projects* and is available under Newcore's SEDAR profile at [www.sedar.com](http://www.sedar.com).

*Neither the TSX Venture Exchange nor its Regulation Services Provider (as that term is defined in the policies of the TSX Venture Exchange) accepts responsibility for the adequacy or accuracy of this release.*

### **Cautionary Note Regarding Forward-Looking Statements**

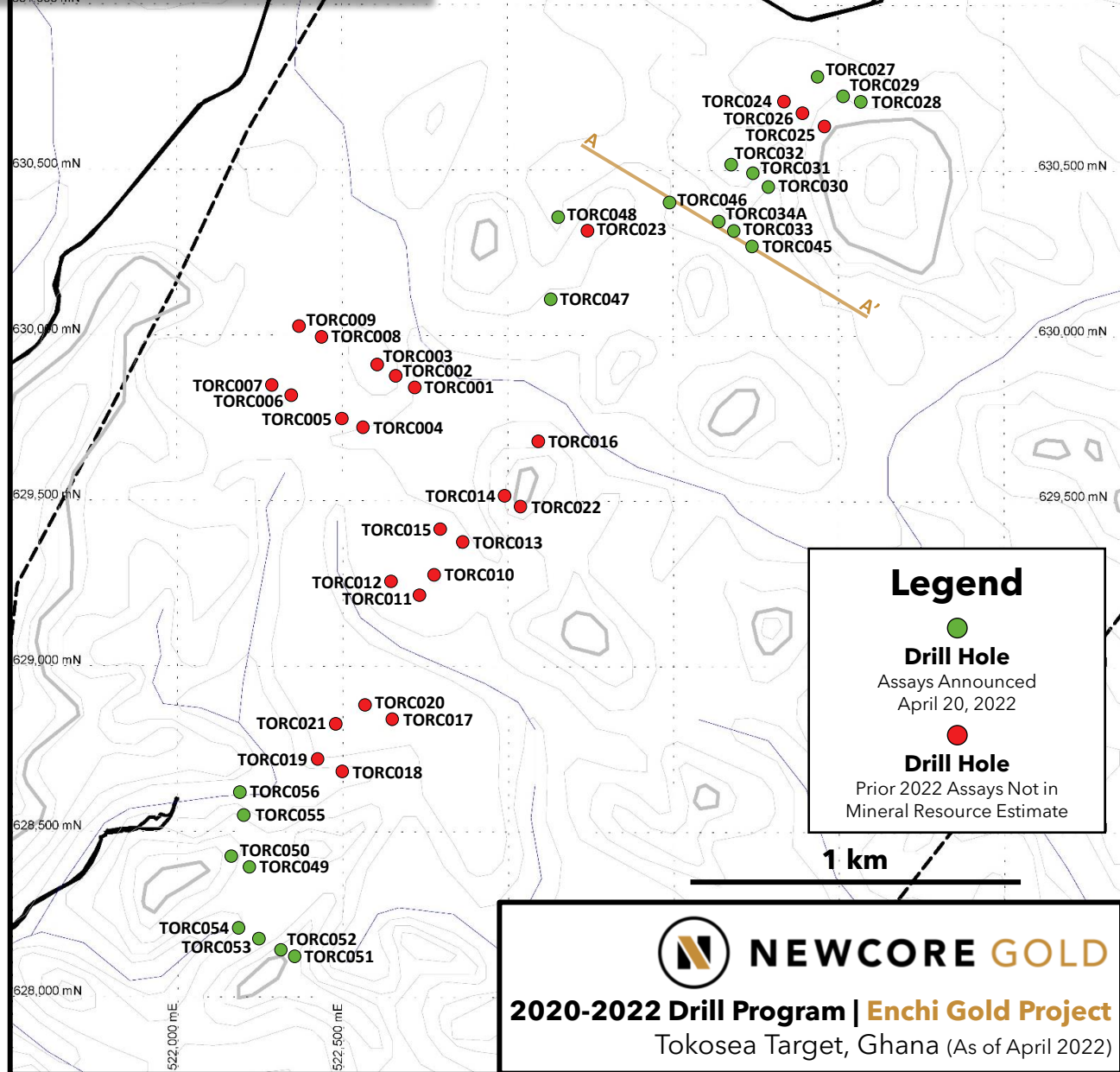
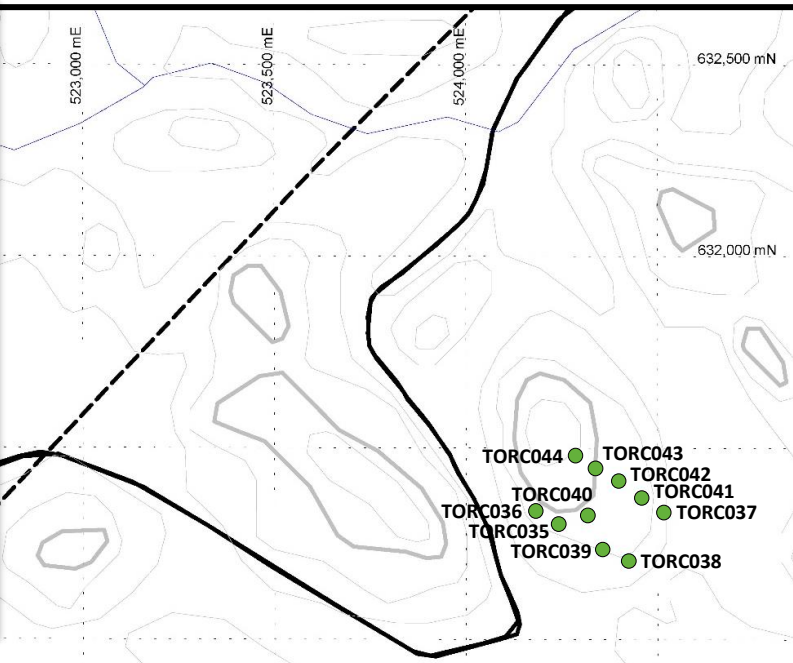
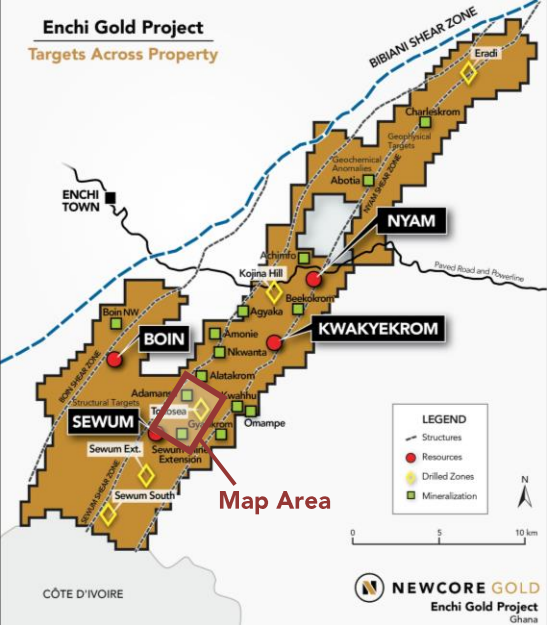
*This news release includes statements that contain "forward-looking information" within the meaning of the applicable Canadian securities legislation ("forward-looking statements"). All statements, other than statements of historical fact, are forward-looking statements and are based on expectations, estimates and projections as at the date of this news release. Any statement that involves discussion with respect to predictions, expectations, beliefs, plans, projections, objectives, assumptions, future events or performance (often, but not always using phrases such as "plans", "expects", "is expected", "budget", "scheduled", "estimates", "forecasts", "intends", "anticipates", or "believes" or variations (including negative variations) of such words and phrases, or state that certain actions, events or results "may", "could", "would", "might" or "will" be taken, occur or be achieved) are not statements of historical fact and may be forward-looking statements. In this news release, forward-looking statements relate, among other things, to: statements about the estimation of mineral resources; results of our ongoing drill campaign, magnitude or quality of mineral deposits; anticipated advancement of mineral properties or programs; and future exploration prospects.*

*These forward-looking statements, and any assumptions upon which they are based, are made in good faith and reflect our current judgment regarding the direction of our business. The assumptions underlying the forward-looking statements are based on information currently available to Newcore. Although the forward-looking statements contained in this news release are based upon what management of Newcore believes, or believed at the time, to be reasonable assumptions, Newcore cannot assure its shareholders that actual results will be consistent with such forward-looking statements, as there may be other factors that cause results not to be as anticipated, estimated or intended. Forward-looking information also involves known and unknown risks, uncertainties and other factors which may cause the actual results, performance or achievements of the Company to be materially different from any future results, performance or achievements expressed or implied by the forward-looking information. Such factors include, among others: risks related to the speculative nature of the Company's business; the Company's formative stage of development; the Company's financial position; possible variations in mineralization, grade or recovery rates; actual results of current exploration activities; fluctuations in general macroeconomic conditions; fluctuations in securities markets; fluctuations in spot and forward prices of gold and other commodities; fluctuations in currency markets (such as the Canadian dollar to United States dollar exchange rate); change in national and local government, legislation, taxation, controls, regulations and political or economic developments; risks and hazards associated with the business of mineral exploration, development and mining (including environmental hazards, unusual or unexpected geological formations); the presence of laws and regulations that may impose restrictions on mining; employee relations; relationships with and claims by local communities; the speculative nature of mineral exploration and development (including the risks of obtaining necessary licenses, permits and approvals from government authorities); and title to properties.*

*Forward-looking statements contained herein are made as of the date of this news release and the Company disclaims any obligation to update any forward-looking statements, whether as a result of new information, future events or results, except as may be required by applicable securities laws. There can be no assurance that forward-looking information will prove to be accurate, as actual results and future events could differ materially from those anticipated in such statements. Accordingly, readers should not place undue reliance on forward-looking information.*



**Enchi Gold Project**  
Targets Across Property



**Legend**

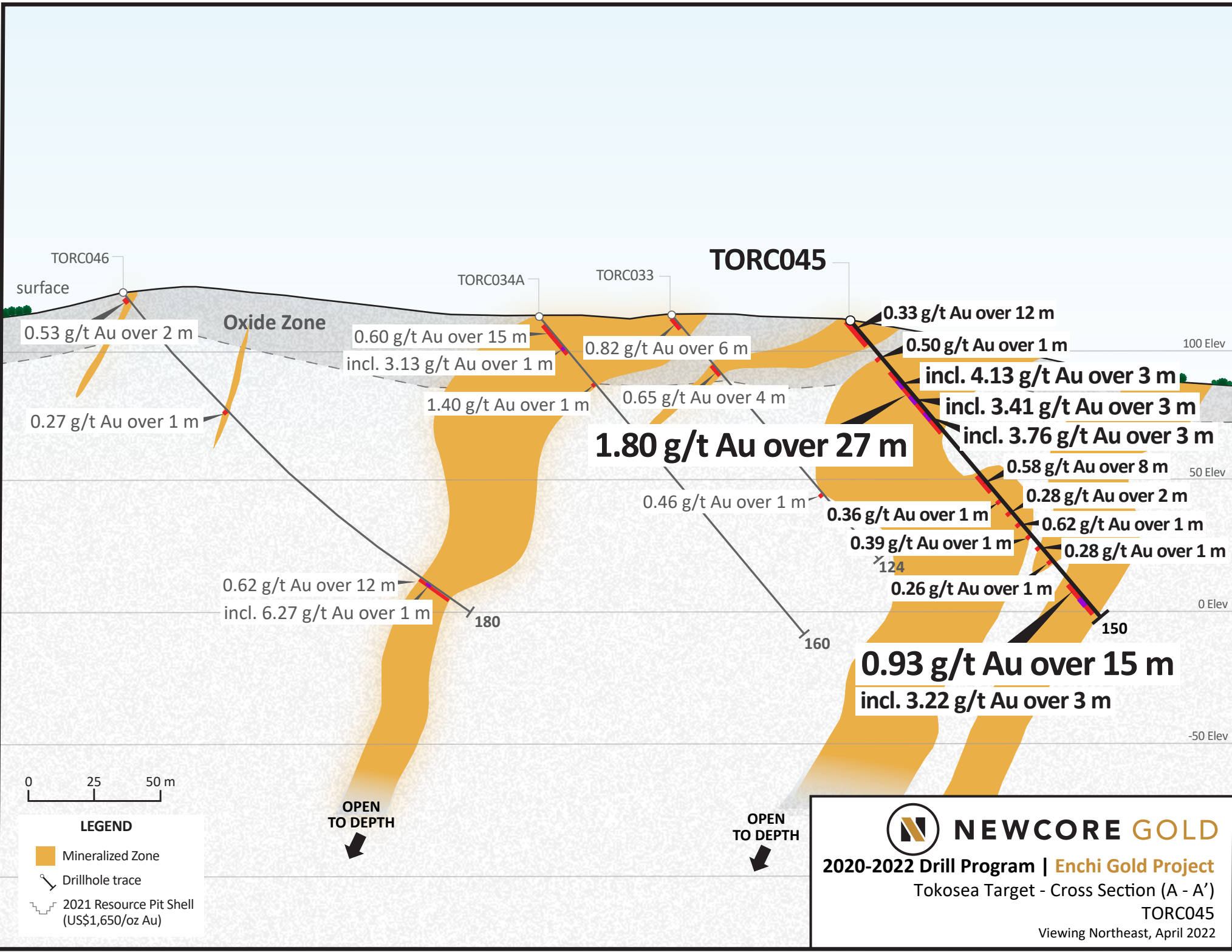
- **Drill Hole**  
Assays Announced  
April 20, 2022
- **Drill Hole**  
Prior 2022 Assays Not in  
Mineral Resource Estimate

1 km



**NEWCORE GOLD**

**2020-2022 Drill Program | Enchi Gold Project**  
Tokosea Target, Ghana (As of April 2022)



## Newcore Gold Ltd. | Enchi Gold Project

2020 - 2022 Drill Results

Table accompanies news release dated April 20, 2022



### Drill Results Released April 20, 2022

Hole ID	Zone/Deposit	From (m)	To (m)	Length (m)	Au (g/t)	UTM East	UTM North	Elevation	Azimuth °	Dip °	Hole Length (m)
<b>TORC027</b>	Tokosea	41.0	44.0	3.0	0.24	523937	630780	142	120	-50	114
and		48.0	53.0	5.0	0.76						
and		97.0	98.0	1.0	0.29						
<b>TORC028</b>	Tokosea	7.0	10.0	3.0	0.49	524067	630710	134	120	-50	120
<b>TORC029</b>	Tokosea	14.0	16.0	2.0	0.55	524018	630724	136	120	-50	102
and		55.0	59.0	4.0	0.36						
<b>TORC030</b>	Tokosea	1.0	4.0	3.0	0.30	523788	630451	112	120	-50	170
and		32.0	33.0	1.0	0.52						
and		76.0	77.0	1.0	0.34						
<b>TORC031</b>	Tokosea	0.0	4.0	<b>4.0</b>	<b>1.73</b>	523744	630489	131	120	-50	120
and		26.0	30.0	<b>4.0</b>	<b>1.31</b>						
and		55.0	57.0	2.0	0.71						
and		97.0	115.0	<b>18.0</b>	<b>0.83</b>						
including		107.0	112.0	<b>5.0</b>	<b>1.89</b>						
<b>TORC032</b>	Tokosea	105.0	110.0	<b>5.0</b>	<b>3.36</b>	523676	630518	135	120	-50	156
and		131.0	148.0	<b>17.0</b>	<b>1.67</b>						
including		131.0	132.0	<b>1.0</b>	<b>18.17</b>						
<b>TORC033</b>	Tokosea	1.0	7.0	6.0	0.82	523685	630319	114	120	-50	124
and		25.0	29.0	4.0	0.65						
and		90.0	91.0	1.0	0.46						
<b>TORC034A</b>	Tokosea	5.0	20.0	<b>15.0</b>	<b>0.60</b>	523640	630345	114	120	-50	160
including		17.0	18.0	<b>1.0</b>	<b>3.13</b>						
and		35.0	36.0	1.0	1.40						
<b>TORC035</b>	Tokosea	9.0	15.0	6.0	0.30	524244	631301	142	120	-50	130
and		90.0	91.0	1.0	0.48						

## Newcore Gold Ltd. | Enchi Gold Project

2020 - 2022 Drill Results

Table accompanies news release dated April 20, 2022



Hole ID	Zone/Deposit	From (m)	To (m)	Length (m)	Au (g/t)	UTM East	UTM North	Elevation	Azimuth °	Dip °	Hole Length (m)
<b>TORC036</b>	Tokosea	7.0	8.0	1.0	0.27	524182	631335	153	120	-50	162
and		93.0	97.0	4.0	0.37						
and		133.0	138.0	5.0	0.32						
and		147.0	150.0	3.0	0.92						
and		155.0	157.0	2.0	0.47						
<b>TORC037</b>	Tokosea	5.0	6.0	1.0	0.28	524518	631332	134	120	-50	137
and		43.0	44.0	1.0	0.22						
<b>TORC038</b>	Tokosea	0.0	1.0	1.0	0.21	524425	631204	151	120	-50	126
<b>TORC039</b>	Tokosea	5.0	16.0	11.0	0.23	524357	631237	163	120	-50	156
and		33.0	34.0	1.0	0.27						
and		53.0	54.0	1.0	0.28						
and		94.0	95.0	1.0	0.28						
<b>TORC040</b>	Tokosea	1.0	2.0	1.0	0.24	524319	631321	173	120	-50	138
and		20.0	21.0	1.0	0.28						
and		40.0	41.0	1.0	0.28						
and		109.0	111.0	2.0	0.80						
<b>TORC041</b>	Tokosea	35.0	36.0	1.0	0.60	524457	631372	157	120	-50	136
and		57.0	58.0	1.0	0.32						
and		67.0	68.0	1.0	1.02						
<b>TORC042</b>	Tokosea	5.0	6.0	1.0	0.31	524401	631414	167	120	-50	126
and		72.0	73.0	1.0	0.23						
<b>TORC043</b>	Tokosea	18.0	20.0	2.0	0.79	524342	631447	162	120	-50	102
and		84.0	85.0	1.0	2.12						
<b>TORC044</b>	Tokosea	14.0	24.0	10.0	0.43	524288	631486	174	120	-50	108
and		49.0	50.0	1.0	0.31						
and		66.0	72.0	6.0	0.21						

## Newcore Gold Ltd. | Enchi Gold Project

2020 - 2022 Drill Results

Table accompanies news release dated April 20, 2022



Hole ID	Zone/Deposit	From (m)	To (m)	Length (m)	Au (g/t)	UTM East	UTM North	Elevation	Azimuth °	Dip °	Hole Length (m)
<b>TORC045</b>	Tokosea	0.0	12.0	12.0	0.33	523739	630276	112	120	-50	150
and		19.0	20.0	1.0	0.50						
and		30.0	57.0	<b>27.0</b>	<b>1.80</b>						
including		31.0	34.0	<b>3.0</b>	<b>4.13</b>						
including		38.0	41.0	<b>3.0</b>	<b>3.41</b>						
including		47.0	50.0	<b>3.0</b>	<b>3.76</b>						
and		78.0	86.0	<b>8.0</b>	<b>0.58</b>						
and		90.0	91.0	1.0	0.36						
and		96.0	98.0	2.0	0.28						
and		102.0	103.0	1.0	0.62						
and		108.0	109.0	1.0	0.39						
and		114.0	115.0	1.0	0.28						
and		120.0	121.0	1.0	0.26						
and		134.0	149.0	<b>15.0</b>	<b>0.93</b>						
including		140.0	143.0	<b>3.0</b>	<b>3.22</b>						
<b>TORC046</b>	Tokosea	3.0	5.0	2.0	0.53	523492	630405	123	120	-50	180
and		61.0	62.0	1.0	0.27						
and		161.0	173.0	<b>12.0</b>	<b>0.62</b>						
including		164.0	165.0	<b>1.0</b>	<b>6.27</b>						
<b>TORC047</b>	Tokosea	0.0	10.0	<b>10.0</b>	<b>1.20</b>	523130	630115	136	120	-50	138
including		1.0	3.0	<b>2.0</b>	<b>4.26</b>						
and		26.0	30.0	<b>4.0</b>	<b>0.99</b>						
and		66.0	68.0	2.0	0.25						
and		85.0	86.0	1.0	0.46						
and		110.0	112.0	2.0	0.32						
and		121.0	123.0	2.0	0.37						
and		126.0	127.0	1.0	0.30						

## Newcore Gold Ltd. | Enchi Gold Project

2020 - 2022 Drill Results

Table accompanies news release dated April 20, 2022



Hole ID	Zone/Deposit	From (m)	To (m)	Length (m)	Au (g/t)	UTM East	UTM North	Elevation	Azimuth °	Dip °	Hole Length (m)
<b>TORC048</b>	Tokosea	0.0	32.0	<b>32.0</b>	<b>0.40</b>	523153	630362	122	120	-50	100
including		8.0	10.0	2.0	0.59						
including		27.0	30.0	<b>3.0</b>	<b>2.10</b>						
and		38.0	42.0	4.0	0.40						
and		63.0	64.0	1.0	0.33						
and		73.0	76.0	3.0	0.53						
and		87.0	95.0	<b>8.0</b>	<b>0.74</b>						
<b>TORC049</b>	Tokosea		no significant results			522211	628391	118	120	-50	120
<b>TORC050</b>	Tokosea		no significant results			522156	628419	130	120	-50	144
<b>TORC051</b>	Tokosea	35.0	36.0	1.0	0.46	522349	628119	142	120	-50	120
<b>TORC052</b>	Tokosea	39.0	40.0	1.0	0.62	522310	628139	143	120	-50	114
and		47.0	49.0	2.0	0.26						
<b>TORC053</b>	Tokosea		no significant results			522241	628175	122	120	-50	108
<b>TORC054</b>	Tokosea		no significant results			522179	628204	112	120	-50	126
<b>TORC055</b>	Tokosea		no significant results			522195	628547	105	120	-50	102
<b>TORC056</b>	Tokosea		no significant results			522183	628619	112	120	-50	100

1. Intervals reported are hole lengths with true width estimated to be 75 - 85%.

2. Length-weighted averages from uncut assays.

3. All drilling completed by independent contractor.

4. All drilling samples sealed on site and delivered directly to independent lab Intertek Mineral Limited located in Tarkwa, Ghana for preparation and 50g Fire Assay with AAS finish.

5. QA/QC procedures include industry standard inclusion of standards, blanks, and duplicates in all sample batches.

[SEE NEXT PAGE FOR PREVIOUSLY RELEASED RESULTS]

## Newcore Gold Ltd. | Enchi Gold Project

2020 - 2022 Drill Results

Table accompanies news release dated April 20, 2022



### Previously Released Drill Results

Hole ID	Zone/Deposit	From (m)	To (m)	Length (m)	Au (g/t)	UTM East	UTM North	Elevation	Azimuth °	Dip °	Hole Length (m)
<b>KBRC138</b>	Boin	92.0	96.0	4.0	1.05	518408	632972	147	114	-60	97
<b>KBRC138A</b>	Boin	133.0	135.0	2.0	0.57	518405	632976	147	114	-60	216
and		146.0	148.0	2.0	0.65						
<b>KBRC139</b>	Boin	1.0	17.0	<b>16.0</b>	<b>0.69</b>	518700	633234	130	120	-60	80
<b>KBRC140</b>	Boin	4.0	7.0	3.0	0.31	519121	633708	155	120	-60	80
and		13.0	14.0	1.0	0.44						
<b>KBRC141</b>	Boin	10.0	21.0	11.0	0.34	519018	633704	156	114	-50	120
and		48.0	95.0	<b>47.0</b>	<b>1.67</b>						
including		49.0	58.0	<b>9.0</b>	<b>2.96</b>						
and incl.		75.0	85.0	<b>10.0</b>	<b>3.63</b>						
<b>KBRC142</b>	Boin	1.0	4.0	3.0	0.27	518558	633239	129	114	-50	156
and		131.0	150.0	<b>19.0</b>	<b>0.43</b>						
including		131.0	142.0	11.0	0.60						
<b>KBRC142B</b>	Boin	121.0	130.0	9.0	0.30	518573	633233	137	114	-50	238
<b>KBRC143</b>	Boin	3.0	17.0	14.0	0.56	519395	634172	120	114	-60	108
<b>KBRC144</b>	Boin	146.0	148.0	2.0	0.51	519378	634178	120	120	-60	150
<b>KBRC145</b>	Boin	48.0	55.0	7.0	0.54	520325	635410	117	120	-60	150
<b>KBRC146</b>	Boin	7.0	10.0	3.0	0.24	520456	635619	124	114	-50	100
and		30.0	62.0	<b>32.0</b>	<b>0.92</b>						
including		42.0	54.0	<b>12.0</b>	<b>1.78</b>						
and incl.		59.0	61.0	2.0	0.52						
<b>KBRC147</b>	Boin	50.0	59.0	9.0	0.52	520424	635582	124	114	-50	102
<b>KBRC148</b>	Boin	56.0	58.0	2.0	0.69	520391	635546	122	114	-50	108
and		75.0	77.0	2.0	0.30						

## Newcore Gold Ltd. | Enchi Gold Project

2020 - 2022 Drill Results

Table accompanies news release dated April 20, 2022



Hole ID	Zone/Deposit	From (m)	To (m)	Length (m)	Au (g/t)	UTM East	UTM North	Elevation	Azimuth °	Dip °	Hole Length (m)
<b>KBRC149</b>	Boin	38.0	41.0	3.0	0.36	520378	635496	120	114	-50	100
<b>KBRC150</b>	Boin	59.0	94.0	35.0	0.57	520335	635517	125	114	-65	148
including		65.0	91.0	26.0	0.70						
and		130.0	135.0	5.0	0.59						
and		141.0	148.0	7.0	0.42						
<b>KBRC150A</b>	Boin	72.0	74.0	2.0	0.59	520338	635514	122	114	-65	174
and		87.0	108.0	<b>21.0</b>	<b>1.19</b>						
and		136.0	139.0	3.0	1.01						
and		145.0	162.0	17.0	0.44						
<b>KBRC151</b>	Boin	9.0	20.0	<b>11.0</b>	<b>2.30</b>	519349	634402	131	120	-60	156
and		62.0	65.0	3.0	0.63						
and		136.0	144.0	8.0	0.55						
<b>KBRC152</b>	Boin	73.0	74.0	1.0	1.20	519292	634429	117	120	-60	258
and		209.0	213.0	4.0	1.56						
and		234.0	235.0	1.0	2.55						
<b>KBRC153</b>	Boin	7.0	11.0	4.0	0.68	519317	634201	122	120	-60	258
and		28.0	33.0	5.0	0.42						
and		42.0	60.0	<b>18.0</b>	<b>1.21</b>						
and		67.0	71.0	<b>4.0</b>	<b>1.40</b>						
and		110.0	114.0	4.0	0.82						
and		155.0	158.0	3.0	0.33						
and		191.0	194.0	3.0	0.39						
<b>KBRC154</b>	Boin	88.0	95.0	7.0	0.61	519086	633928	157	120	-60	178
and		149.0	152.0	3.0	0.27						
<b>KBRC155</b>	Boin	85.0	89.0	4.0	0.22	518896	633582	155	120	-60	138
and		103.0	105.0	2.0	0.89						
and		118.0	134.0	<b>16.0</b>	<b>0.57</b>						



## Newcore Gold Ltd. | Enchi Gold Project

2020 - 2022 Drill Results

Table accompanies news release dated April 20, 2022



Hole ID	Zone/Deposit	From (m)	To (m)	Length (m)	Au (g/t)	UTM East	UTM North	Elevation	Azimuth °	Dip °	Hole Length (m)
<b>KBRC155A</b>	Boin	95.0	97.0	2.0	0.68	518900	633578	163	120	-60	204
and		110.0	113.0	3.0	0.64						
and		127.0	135.0	8.0	0.37						
<b>KBRC156A</b>	Boin	156.0	174.0	<b>18.0</b>	<b>0.69</b>	518480	633164	130	114	-55	270
and		187.0	191.0	<b>4.0</b>	<b>1.20</b>						
<b>KBRC157B</b>	Boin	150.0	162.0	12.0	0.70	518457	633065	128	114	-65	180
<b>KBRC158</b>	Boin	77.0	91.0	<b>14.0</b>	<b>1.41</b>	518379	632992	126	114	-60	260
<b>KBRC159</b>	Boin	178.0	240.0	<b>62.0</b>	<b>0.73</b>	518423	633075	127	114	-65	240
including		187.0	206.0	<b>19.0</b>	<b>1.76</b>						
and incl.		199.0	206.0	<b>7.0</b>	<b>3.18</b>						
<b>KBRC160</b>	Boin		no significant results			518358	632778	124	114	-60	120
<b>KBRC161</b>	Boin	124.0	126.0	2.0	0.37	518330	632898	128	114	-55	200
and		144.0	151.0	7.0	0.36						
and		163.0	166.0	3.0	0.31						
<b>KBRC162</b>	Boin	65.0	69.0	4.0	0.53	518321	632793	120	114	-60	156
and		88.0	91.0	3.0	0.68						
and		101.0	107.0	<b>6.0</b>	<b>1.67</b>						
<b>KBRC163</b>	Boin	11.0	14.0	3.0	0.34	519678	634811	141	114	-60	102
and		27.0	54.0	<b>27.0</b>	<b>1.27</b>						
<b>KBRC164</b>	Boin	19.0	25.0	<b>6.0</b>	<b>1.23</b>	519649	634822	164	114	-60	144
and		102.0	114.0	<b>12.0</b>	<b>0.69</b>						
and		128.0	132.0	4.0	0.47						
<b>KBRC165</b>	Boin	78.0	80.0	2.0	0.41	519895	635045	120	114	-60	102
<b>KBRC166</b>	Boin		no significant results			519886	635049	126	114	-60	140
<b>KBRC167</b>	Boin		no significant results			519836	634974	123	114	-60	120
<b>KBRC168</b>	Boin	1.0	6.0	5.0	0.56	519816	634986	121	114	-60	140

## Newcore Gold Ltd. | Enchi Gold Project

2020 - 2022 Drill Results

Table accompanies news release dated April 20, 2022



Hole ID	Zone/Deposit	From (m)	To (m)	Length (m)	Au (g/t)	UTM East	UTM North	Elevation	Azimuth °	Dip °	Hole Length (m)
<b>KBRC169</b>	Boin	55.0	69.0	<b>14.0</b>	<b>1.41</b>	519973	635110	128	114	-60	138
including		62.0	68.0	<b>6.0</b>	<b>2.86</b>						
and		84.0	86.0	2.0	0.53						
and		90.0	92.0	2.0	0.53						
and		125.0	131.0	6.0	0.31						
<b>KBRC170</b>	Boin	45.0	49.0	4.0	0.31	520050	635185	141	114	-60	156
and		70.0	72.0	2.0	0.49						
<b>KBRC171</b>	Boin	77.0	78.0	1.0	1.07	520030	635195	129	114	-60	150
and		119.0	129.0	10.0	0.44						
<b>KBRC172</b>	Boin	2.0	5.0	3.0	0.27	520131	635252	125	114	-60	150
and		78.0	84.0	6.0	0.57						
and		128.0	138.0	<b>10.0</b>	<b>0.92</b>						
<b>KBRC173</b>	Boin	20.0	22.0	2.0	0.28	520105	635265	126	114	-60	186
and		85.0	87.0	2.0	0.76						
and		154.0	158.0	4.0	0.32						
and		166.0	179.0	13.0	0.30						
<b>KBRC174</b>	Boin	91.0	93.0	2.0	0.41	519957	635121	130	114	-60	162
and		153.0	154.0	1.0	0.76						
<b>KBRC175</b>	Boin	67.0	89.0	<b>22.0</b>	<b>0.65</b>	520291	635396	119	114	-60	150
<b>KBRC176</b>	Boin	70.0	77.0	7.0	0.39	520369	635575	130	114	-60	182
and		95.0	105.0	<b>10.0</b>	<b>0.64</b>						
and		130.0	140.0	10.0	0.44						
<b>KBRC177</b>	Boin	81.0	84.0	2.0	0.47	520320	635523	123	114	-65	228
and		108.0	109.0	1.0	0.46						
and		116.0	120.0	4.0	0.81						
and		204.0	206.0	2.0	1.39						
<b>KBRC178</b>	Boin	134.0	140.0	6.0	0.57	520297	635532	117	114	-65	220
		147.0	149.0	2.0	0.90						

## Newcore Gold Ltd. | Enchi Gold Project

2020 - 2022 Drill Results

Table accompanies news release dated April 20, 2022



Hole ID	Zone/Deposit	From (m)	To (m)	Length (m)	Au (g/t)	UTM East	UTM North	Elevation	Azimuth °	Dip °	Hole Length (m)
<b>KBRC179</b>	Boin	92.0	97.0	5.0	0.56	520436	635631	133	114	-50	150
<b>KBRC180</b>	Boin	108.0	110.0	2.0	0.33	520415	635637	134	114	-55	170
and		126.0	129.0	3.0	0.47						
<b>KBRC181</b>	Boin	127.0	138.0	<b>11.0</b>	<b>0.45</b>	520393	635648	138	114	-60	216
and		142.0	145.0	3.0	0.29						
and		155.0	162.0	<b>7.0</b>	<b>1.05</b>						
<b>KBRC182</b>	Boin	64.0	68.0	4.0	0.35	520570	635717	137	114	-60	108
and		78.0	82.0	4.0	0.68						
and		87.0	91.0	4.0	0.70						
<b>KBRC183</b>	Boin	93.0	96.0	3.0	0.49	520544	635724	131	114	-60	144
and		105.0	121.0	16.0	0.30						
<b>KBRC184</b>	Boin	86.0	88.0	2.0	0.44	520234	635422	114	114	-60	216
and		102.0	111.0	<b>9.0</b>	<b>0.82</b>						
and		125.0	128.0	3.0	0.45						
and		145.0	166.0	<b>21.0</b>	<b>0.94</b>						
<b>KBRC185</b>	Boin	114.0	116.0	2.0	1.42	530284	634768	135	114	-50	204
and		137.0	204.0	<b>67.0</b>	<b>0.85</b>						
including		137.0	146.0	<b>9.0</b>	<b>2.95</b>						
<b>KBRC186</b>	Boin	102.0	103.0	1.0	0.30	530262	634841	146	114	-60	200
and		138.0	142.0	4.0	0.54						
and		166.0	169.0	3.0	0.32						
<b>KBRC187</b>	Boin	0.0	1.0	1.0	0.56	530200	635099	137	114	-60	132
and		7.0	9.0	2.0	0.30						
and		22.0	24.0	2.0	1.19						
and		102.0	106.0	4.0	0.40						
<b>KBRC188</b>	Boin	6.0	30.0	<b>24.0</b>	<b>0.85</b>	530122	635241	129	114	-60	150
and		46.0	51.0	5.0	0.50						

## Newcore Gold Ltd. | Enchi Gold Project

2020 - 2022 Drill Results

Table accompanies news release dated April 20, 2022



Hole ID	Zone/Deposit	From (m)	To (m)	Length (m)	Au (g/t)	UTM East	UTM North	Elevation	Azimuth °	Dip °	Hole Length (m)
<b>KBRC189</b>	Boin	86.0	88.0	2.0	0.37	530142	635433	111	114	-60	200
and		92.0	94.0	2.0	0.51						
and		101.0	103.0	2.0	0.57						
and		121.0	123.0	2.0	0.41						
and		126.0	127.0	1.0	0.78						
and		140.0	142.0	2.0	0.37						
and		148.0	150.0	2.0	0.48						
<b>KBRC190</b>	Boin	103.0	111.0	8.0	0.61	530180	635591	128	114	-60	200
and		119.0	155.0	<b>36.0</b>	<b>1.14</b>						
including		124.0	142.0	<b>18.0</b>	<b>1.72</b>						
<b>KBRC191</b>	Boin	1.0	3.0	2.0	0.48	530297	635707	129	114	-60	100
<b>KBRC192</b>	Boin	116.0	118.0	2.0	0.36	530507	635817	145	114	-60	150
and		124.0	125.0	1.0	0.30						
<b>KBRC193</b>	Boin		no significant results			530909	635870	125	114	-50	100
<b>KBRC194</b>	Boin	4.0	6.0	2.0	0.31	530760	635882	119	114	-60	160
and		12.0	13.0	1.0	0.50						
and		17.0	19.0	2.0	0.46						
and		25.0	26.0	1.0	0.36						
and		102.0	103.0	1.0	0.86						
<b>KBRC195</b>	Boin	111.0	113.0	2.0	0.31	530910	635894	124	114	-70	208
and		145.0	146.0	1.0	0.37						
and		163.0	164.0	1.0	0.58						
<b>KBRC196</b>	Boin		no significant results			531135	635948	114	114	-50	100
<b>KBRC197</b>	Bon	21.0	23.0	2.0	0.54	531161	635960	108	114	-60	150
and		28.0	29.0	1.0	0.32						

## Newcore Gold Ltd. | Enchi Gold Project

2020 - 2022 Drill Results

Table accompanies news release dated April 20, 2022



Hole ID	Zone/Deposit	From (m)	To (m)	Length (m)	Au (g/t)	UTM East	UTM North	Elevation	Azimuth °	Dip °	Hole Length (m)
<b>KBRC198</b>	Boin	4.0	8.0	4.0	0.39	531190	635967	107	114	-70	204
and		29.0	32.0	3.0	0.43						
and		36.0	40.0	4.0	0.34						
and		97.0	99.0	2.0	0.39						
and		193.0	194.0	1.0	0.35						
<b>KBRC199</b>	Boin	41.0	46.0	5.0	0.41	531096	636032	112	114	-50	108
<b>KBRC200</b>	Boin	59.0	62.0	3.0	0.67	531120	636055	113	114	-70	200
<b>KBRC201</b>	Boin	84.0	86.0	2.0	0.26	520881	636042	111	114	-60	180
<b>KBRC202</b>	Boin	7.0	8.0	1.0	0.32	518142	632540	136	114	-60	102
<b>KBRC203</b>	Boin	59.0	61.0	2.0	0.29	518113	632554	129	114	-60	150
and		130.0	133.0	3.0	0.32						
<b>KBRC204</b>	Boin	51.0	53.0	2.0	0.26	518036	632382	121	114	-60	102
<b>KBRC205</b>	Boin	12.0	27.0	<b>15.0</b>	<b>0.53</b>	517993	632397	131	114	-60	132
including		13.0	16.0	<b>3.0</b>	<b>1.81</b>						
and		30.0	33.0	3.0	0.31						
and		80.0	82.0	2.0	0.48						
<b>KBRC206</b>	Boin	67.0	69.0	<b>2.0</b>	<b>2.31</b>	517951	632416	125	114	-60	168
<b>KBRC207</b>	Boin	12.0	14.0	2.0	0.32	517815	632238	120	114	-60	108
and		44.0	46.0	2.0	0.40						
<b>KBRC208</b>	Boin	51.0	53.0	2.0	0.30	517778	632254	115	114	-60	105
and		78.0	80.0	2.0	0.21						
and		88.0	89.0	1.0	0.33						
<b>KBRC209</b>	Boin	87.0	90.0	3.0	0.19	517741	632271	115	114	-60	156
<b>KBRC210A</b>	Boin		no significant results			522086	637066	98	114	-60	109
<b>KBRC211</b>	Boin		no significant results			522026	637096	101	114	-60	150
<b>KBRC212</b>	Boin		no significant results			521954	637125	99	114	-60	200
<b>KBRC213</b>	Boin		no significant results			521852	636897	105	114	-60	108
<b>KBRC214</b>	Boin		no significant results			521774	636929	100	114	-60	156

## Newcore Gold Ltd. | Enchi Gold Project

2020 - 2022 Drill Results

Table accompanies news release dated April 20, 2022



Hole ID	Zone/Deposit	From (m)	To (m)	Length (m)	Au (g/t)	UTM East	UTM North	Elevation	Azimuth °	Dip °	Hole Length (m)
<b>KBRC215</b>	Boin	89.0	90.0	1.0	0.21	521707	636961	104	114	-60	213
<b>KBRC216</b>	Boin		no significant results			521425	636580	116	114	-60	108
<b>KBRC217</b>	Boin		no significant results			521370	636604	108	114	-60	150
<b>KBRC218</b>	Boin		no significant results			521309	636633	100	114	-60	200
<b>KBRC219</b>	Boin		no significant results			521141	636272	107	114	-60	100
<b>KBRC220</b>	Boin	114.0	116.0	2.0	0.28	521096	636295	107	114	-60	150
<b>KBRC221</b>	Boin		no significant results			521053	636315	107	114	-60	216
<b>KBRC222</b>	Boin	23.0	26.0	3.0	0.40	517464	631646	136	114	-60	120
and		34.0	41.0	7.0	0.45						
and		48.0	53.0	5.0	0.33						
and		59.0	61.0	2.0	0.67						
<b>KBRC223</b>	Boin	75.0	79.0	4.0	0.29	517535	631739	140	114	-60	132
<b>KBRC224</b>	Boin	3.0	4.0	1.0	0.94	517608	631888	113	114	-60	100
and		41.0	42.0	1.0	1.16						
<b>KBRC225</b>	Boin	23.0	25.0	<b>2.0</b>	<b>1.51</b>	517571	631888	118	114	-60	100
and		38.0	40.0	2.0	0.31						
and		70.0	109.0	<b>39.0</b>	<b>0.67</b>						
including		95.0	103.0	<b>8.0</b>	<b>1.60</b>						
<b>KBRC226</b>	Boin	91.0	92.0	1.0	0.63	517690	632085	122	114	-60	100
<b>KBRC227</b>	Boin	84.0	86.0	2.0	0.37	517653	632106	116	114	-60	150
and		95.0	104.0	9.0	0.35						
including		95.0	97.0	2.0	0.69						
<b>KBRC228</b>	Boin	36.0	38.0	2.0	0.33	518290	632705	125	114	-60	100
and		50.0	51.0	1.0	0.40						
and		78.0	84.0	6.0	0.29						
<b>KBRC229</b>	Boin	118.0	133.0	<b>15.0</b>	<b>0.73</b>	518240	632729	127	114	-60	150
<b>KBRC230</b>	Boin		no significant results			518218	632621	126	114	-60	107

## Newcore Gold Ltd. | Enchi Gold Project

2020 - 2022 Drill Results

Table accompanies news release dated April 20, 2022



Hole ID	Zone/Deposit	From (m)	To (m)	Length (m)	Au (g/t)	UTM East	UTM North	Elevation	Azimuth °	Dip °	Hole Length (m)
<b>KBRC231</b>	Boin	52.0	54.0	2.0	0.33	518175	632636	120	114	-60	150
and		56.0	57.0	1.0	0.32						
and		103.0	104.0	1.0	0.33						
<b>KBRC232</b>	Boin	8.0	12.0	4.0	0.36	520142	635142	138	114	-60	84
<b>KBRC233</b>	Boin	21.0	27.0	6.0	0.29	520119	635156	135	114	-60	126
and		39.0	43.0	<b>4.0</b>	<b>3.50</b>						
and		63.0	64.0	1.0	0.45						
and		67.0	68.0	1.0	0.31						
<b>KBRC234</b>	Boin	64.0	71.0	<b>7.0</b>	<b>1.25</b>	520035	635082	121	114	-60	114
<b>KBRC235</b>	Boin	40.0	43.0	<b>3.0</b>	<b>1.45</b>	520092	635164	134	114	-60	136
and		55.0	59.0	<b>4.0</b>	<b>1.29</b>						
and		91.0	92.0	1.0	0.46						
and		103.0	107.0	4.0	0.39						
and		123.0	125.0	2.0	0.34						
<b>KBRC236</b>	Boin	13.0	18.0	<b>5.0</b>	<b>1.24</b>	520187	635223	125	114	-60	126
and		55.0	124.0	<b>69.0</b>	<b>0.90</b>						
including		61.0	73.0	<b>12.0</b>	<b>2.06</b>						
<b>KBRC237</b>	Boin	24.0	26.0	2.0	0.59	520246	635295	118	114	-60	100
and		52.0	56.0	4.0	0.46						
<b>KBRC238</b>	Boin	44.0	45.0	1.0	0.46	520218	635313	112	114	-60	150
and		118.0	120.0	2.0	0.41						
<b>KBRC239</b>	Boin	6.0	7.0	1.0	0.37	520333	635374	114	114	-60	100
and		91.0	92.0	1.0	0.71						
<b>KBRC240</b>	Boin	48.0	51.0	3.0	0.69	520334	635433	110	114	-60	100
and		57.0	59.0	2.0	0.28						
and		72.0	73.0	1.0	0.63						

## Newcore Gold Ltd. | Enchi Gold Project

2020 - 2022 Drill Results

Table accompanies news release dated April 20, 2022



Hole ID	Zone/Deposit	From (m)	To (m)	Length (m)	Au (g/t)	UTM East	UTM North	Elevation	Azimuth °	Dip °	Hole Length (m)
<b>KBRC241</b>	Boin	18.0	26.0	<b>8.0</b>	<b>0.45</b>	520300	635447	129	114	-60	150
and		34.0	43.0	<b>9.0</b>	<b>1.75</b>						
and		62.0	65.0	<b>3.0</b>	<b>1.36</b>						
and		76.0	112.0	<b>36.0</b>	<b>1.02</b>						
including		95.0	102.0	<b>7.0</b>	<b>2.58</b>						
<b>KBRC242</b>	Boin	6.0	8.0	2.0	0.57	520443	635548	121	114	-60	100
<b>KBRC243</b>	Boin		no significant results			520612	635700	129	114	-60	100
<b>KBRC244</b>	Boin	0.0	1.0	1.0	0.48	518380	632770	126	114	-60	102
and		4.0	11.0	<b>7.0</b>	<b>0.68</b>						
<b>KBRC245</b>	Boin	126.0	132.0	6.0	0.56	520161	635179	94	114	-55	132
<b>KBRC246</b>	Boin	2.0	12.0	10.0	0.74	520216	635206	116	114	-50	108
<b>KBRC247</b>	Boin	9.0	16.0	7.0	0.45	520187	635223	123	114	-65	186
and		70.0	74.0	4.0	0.50						
and		102.0	105.0	3.0	0.56						
<b>KBRC248</b>	Boin	1.0	6.0	5.0	0.45	520285	635280	115	114	-55	156
and		29.0	31.0	2.0	0.25						
<b>KBRC249</b>	Boin	1.0	3.0	2.0	0.32	520309	635327	113	114	-55	132
and		14.0	15.0	1.0	0.31						
<b>KBRC250</b>	Boin	54.0	59.0	5.0	0.28	520273	635345	119	114	-55	138
and		79.0	81.0	2.0	0.30						
and		109.0	111.0	<b>2.0</b>	<b>95.16</b>						
and		111.0	116.0	<b>5.0</b>	<b>0.93</b>						
and		120.0	121.0	<b>1.0</b>	<b>13.22</b>						
and		121.0	127.0	6.0	0.21						
<b>KBRC251</b>	Boin	182.0	187.0	5.0	0.20	520302	635603	130	114	-60	240
<b>KBRC252</b>	Boin	134.0	135.0	1.0	1.86	520512	635737	144	114	-60	207
<b>KBRC253</b>	Boin	17.0	19.0	2.0	0.33	519153	633798	114	114	-60	114
and		24.0	31.0	7.0	0.99						



## Newcore Gold Ltd. | Enchi Gold Project

2020 - 2022 Drill Results

Table accompanies news release dated April 20, 2022



Hole ID	Zone/Deposit	From (m)	To (m)	Length (m)	Au (g/t)	UTM East	UTM North	Elevation	Azimuth °	Dip °	Hole Length (m)
<b>KBRC254</b>	Boin	57.0	59.0	2.0	0.30	517736	632173	112	114	-50	102
<b>KBRC255</b>	Boin	143.0	145.0	2.0	0.39	517700	632187	113	114	-50	152
<b>KBRC256</b>	Boin	39.0	47.0	8.0	0.68	517597	631947	124	114	-55	150
and		51.0	53.0	2.0	0.27						
and		63.0	76.0	13.0	0.48						
and		118.0	119.0	1.0	0.36						
and		126.0	139.0	13.0	0.21						
<b>KBRC257</b>	Boin	42.0	44.0	2.0	0.43	517565	631962	114	114	-55	201
and		52.0	81.0	<b>29.0</b>	<b>0.50</b>						
and		188.0	201.0	13.0	0.45						
<b>KBRC258</b>	Boin	49.0	52.0	3.0	0.86	517585	632005	112	114	-50	150
and		62.0	65.0	3.0	0.50						
and		85.0	91.0	6.0	0.78						
and		107.0	114.0	7.0	0.27						
and		139.0	143.0	4.0	0.39						
<b>KBRC259</b>	Boin	56.0	62.0	6.0	0.46	517742	632065	113	114	-50	124
<b>KBRC260</b>	Boin	39.0	41.0	2.0	0.35	517663	631979	110	114	-55	90
and		49.0	62.0	<b>13.0</b>	<b>0.78</b>						
<b>KBRC261</b>	Boin	101.0	103.0	2.0	0.31	517742	632065	113	114	-50	156
<b>KBRC262</b>	Boin		no significant results			517617	632116	104	114	-50	198
<b>KBRC263</b>	Boin	22.0	25.0	3.0	0.31	517653	631932	113	114	-55	108
and		45.0	46.0	1.0	0.51						

## Newcore Gold Ltd. | Enchi Gold Project

2020 - 2022 Drill Results

Table accompanies news release dated April 20, 2022



Hole ID	Zone/Deposit	From (m)	To (m)	Length (m)	Au (g/t)	UTM East	UTM North	Elevation	Azimuth °	Dip °	Hole Length (m)
<b>KBRC264</b>	Boin	33.0	42.0	<b>9.0</b>	<b>0.50</b>	517530	631895	119	114	-50	236
and		63.0	64.0	1.0	0.53						
and		72.0	102.0	<b>30.0</b>	<b>0.39</b>						
and		142.0	144.0	2.0	0.32						
and		160.0	169.0	9.0	0.32						
and		177.0	230.0	<b>53.0</b>	<b>0.51</b>						
including		187.0	196.0	<b>9.0</b>	<b>1.17</b>						
and		234.0	236.0	2.0	0.43						
<b>KBRC265</b>	Boin	3.0	5.0	2.0	0.32	517569	631819	132	114	-50	108
and		23.0	24.0	1.0	0.88						
and		44.0	48.0	4.0	0.36						
and		69.0	78.0	<b>9.0</b>	<b>1.55</b>						
including		70.0	72.0	<b>2.0</b>	<b>4.75</b>						
<b>KBRC266</b>	Boin	14.0	22.0	<b>8.0</b>	<b>1.12</b>	517530	631833	131	114	-50	156
and		92.0	94.0	2.0	0.56						
<b>KBRC267</b>	Boin	45.0	49.0	4.0	0.30	517490	631848	125	114	-55	186
and		95.0	102.0	<b>7.0</b>	<b>1.78</b>						
<b>KBRC268</b>	Boin	45.0	46.0	1.0	0.84	517365	631470	110	114	-50	126
and		60.0	85.0	<b>25.0</b>	<b>0.79</b>						
and		94.0	96.0	2.0	0.29						
and		108.0	121.0	<b>13.0</b>	<b>0.54</b>						
<b>KBRC269</b>	Boin	128.0	130.0	2.0	0.50	517338	631490	109	114	-50	152
<b>KBRC270</b>	Boin	48.0	53.0	5.0	0.50	517413	631559	108	114	-50	120
and		78.0	80.0	2.0	0.41						
and		92.0	112.0	20.0	0.44						
<b>KBDD061A</b>	Boin	236.0	236.7	0.7	1.38	518372	633108	122	114	-65	360.9
<b>KBDD062</b>	Boin	303.0	304.1	1.1	0.24	518423	633182	127	114	-62	320.8

## Newcore Gold Ltd. | Enchi Gold Project

2020 - 2022 Drill Results

Table accompanies news release dated April 20, 2022



Hole ID	Zone/Deposit	From (m)	To (m)	Length (m)	Au (g/t)	UTM East	UTM North	Elevation	Azimuth °	Dip °	Hole Length (m)
<b>KBDD063A</b>	Boin	207.5	210.0	2.5	0.30	518891	633759	155	114	-60	249.8
and		218.5	225.8	7.3	0.45						
and		243.0	244.2	1.2	1.09						
and		248.0	249.8	1.8	0.63						
<b>KBRD063</b>	Boin	198.4	201.3	2.9	0.69	518891	633759	155	114	-60	315.4
and		208.9	221.9	13.0	0.13						
and		252.3	254.4	2.1	2.72						
and		297.8	301.0	3.2	0.72						
<b>KBDD064</b>	Boin	107.3	109.0	1.7	1.19	519239	634235	130	114	-60	351.7
and		121.0	195.0	<b>74.0</b>	<b>1.28</b>						
including		122.0	128.4	<b>6.4</b>	<b>2.65</b>						
including		136.0	137.4	<b>1.4</b>	<b>9.93</b>						
including		149.3	155.4	<b>6.1</b>	<b>2.24</b>						
including		170.6	177.0	<b>6.4</b>	<b>4.04</b>						
including	189.0	193.0	<b>4.0</b>	<b>2.41</b>							
<b>KBDD065</b>	Boin	276.3	277.0	0.7	1.32	520215	635573	109	114	-57	330.3
and		296.0	297.8	<b>1.8</b>	<b>6.14</b>						
and		310.0	313.0	3.0	0.56						
<b>KBDD066</b>	Boin	222.0	247.0	<b>25.0</b>	<b>1.08</b>	518777	633586	146	114	-57	300.6
including		222.0	224.0	<b>2.0</b>	<b>4.31</b>						
including		232.9	237.5	<b>4.6</b>	<b>2.06</b>						
and		257.4	279.0	<b>21.6</b>	<b>0.63</b>						
including		259.0	260.8	<b>1.8</b>	<b>2.04</b>						
including	267.0	270.0	<b>3.0</b>	<b>1.84</b>							
<b>KBDD067</b>	Boin		no significant results			519130	634081	142	114	-57	300.4
<b>KBRC271</b>	Boin	10.0	12.0	2.0	0.34	517381	631566	110	114	-50	162
and		18.0	25.0	<b>7.0</b>	<b>1.22</b>						
and		77.0	110.0	<b>33.0</b>	<b>0.47</b>						
and		119.0	122.0	3.0	0.30						

## Newcore Gold Ltd. | Enchi Gold Project

2020 - 2022 Drill Results

Table accompanies news release dated April 20, 2022



Hole ID	Zone/Deposit	From (m)	To (m)	Length (m)	Au (g/t)	UTM East	UTM North	Elevation	Azimuth °	Dip °	Hole Length (m)
<b>KBRC272</b>	Boin	90.0	94.0	4.0	0.40	517432	631655	126	114	-50	162
and		102.0	109.0	7.0	0.75						
<b>KBRC273</b>	Boin	152.0	155.0	3.0	1.63	519489	634780	132	114	-50	278
and		166.0	175.0	<b>9.0</b>	<b>1.67</b>						
and		183.0	192.0	<b>9.0</b>	<b>1.57</b>						
and		232.0	233.0	1.0	0.70						
<b>KBRC274</b>	Boin	12.0	13.0	1.0	0.41	520124	635198	127	114	-55	200
and		32.0	40.0	8.0	0.41						
and		60.0	63.0	3.0	0.82						
and		84.0	85.0	1.0	0.39						
<b>KBRC275</b>	Boin	16.0	19.0	3.0	0.39	520245	635365	116	114	-55	156
and		45.0	46.0	1.0	0.31						
and		80.0	82.0	2.0	0.32						
<b>KBRC276</b>	Boin	27.0	67.0	<b>40.0</b>	<b>0.63</b>	520217	635377	120	114	-55	216
including		44.0	46.0	2.0	3.42						
and		69.0	70.0	1.0	0.65						
and		80.0	83.0	3.0	0.35						
and		91.0	103.0	<b>12.0</b>	<b>0.64</b>						
including		91.0	95.0	4.0	1.12						
and		113.0	216.0	<b>103.0</b>	<b>1.00</b>						
including		121.0	126.0	<b>5.0</b>	<b>4.16</b>						
including		132.0	133.0	<b>1.0</b>	<b>2.91</b>						
including		198.0	214.0	<b>16.0</b>	<b>1.67</b>						
<b>KBRC277</b>	Boin	159.0	162.0	3.0	1.00	518205	632743	131	114	-60	216
<b>KBRC278</b>	Boin	117.0	132.0	<b>15.0</b>	<b>1.49</b>	518259	632764	129	114	-55	156
including		123.0	129.0	<b>6.0</b>	<b>2.44</b>						
<b>KBRC279</b>	Boin	152.0	160.0	8.0	0.68	518229	632779	127	114	-55	205
and		171.0	174.0	3.0	0.45						
<b>KBRC280</b>	Boin	140.0	141.0	1.0	0.29	518288	632806	122	114	-60	222

## Newcore Gold Ltd. | Enchi Gold Project

2020 - 2022 Drill Results

Table accompanies news release dated April 20, 2022



Hole ID	Zone/Deposit	From (m)	To (m)	Length (m)	Au (g/t)	UTM East	UTM North	Elevation	Azimuth °	Dip °	Hole Length (m)
<b>SWRC068</b>	Sewum	3.0	5.0	2.0	0.28	521494	629230	193	120	-70	100
and		23.0	31.0	8.0	0.30						
and		39.0	42.0	3.0	0.35						
and		46.0	62.0	<b>16.0</b>	<b>0.54</b>						
including		51.0	57.0	6.0	0.93						
and		74.0	76.0	2.0	1.03						
<b>SWRC069</b>	Sewum	39.0	41.0	2.0	0.30	521442	629252	198	120	-70	125
and		50.0	59.0	9.0	0.55						
and		63.0	70.0	7.0	0.47						
and		98.0	114.0	<b>16.0</b>	<b>1.20</b>						
<b>SWRC070</b>	Sewum	43.0	45.0	2.0	1.41	521392	629273	193	120	-70	180
and		141.0	148.0	7.0	0.98						
<b>SWRC071</b>	Sewum	3.0	16.0	13.0	0.45	521347	628986	193	120	-55	100
and		38.0	43.0	5.0	0.46						
and		95.0	100.0	5.0	0.55						
<b>SWRC072</b>	Sewum	3.0	22.0	<b>19.0</b>	<b>0.67</b>	521408	628860	199	120	-60	150
and		46.0	84.0	<b>38.0</b>	<b>0.42</b>						
<b>SWRC073</b>	Sewum	0.0	28.0	<b>28.0</b>	<b>1.52</b>	520472	626241	119	130	-50	100
including		15.0	25.0	<b>10.0</b>	<b>3.58</b>						
and		36.0	42.0	6.0	1.21						
<b>SWRC074</b>	Sewum	7.0	38.0	<b>31.0</b>	<b>0.84</b>	520416	626193	105	130	-50	100
including		8.0	17.0	<b>9.0</b>	<b>1.47</b>						
and		48.0	60.0	12.0	0.71						
and		92.0	94.0	2.0	0.36						
<b>SWRC075</b>	Sewum	169.0	177.0	8.0	0.56	520355	626219	102	130	-60	220
<b>SWRC076</b>	Sewum	1.0	12.0	11.0	0.48	521308	627853	118	120	-50	120
and		39.0	88.0	<b>49.0</b>	<b>0.91</b>						
and		104.0	120.0	<b>16.0</b>	<b>3.04</b>						

## Newcore Gold Ltd. | Enchi Gold Project

2020 - 2022 Drill Results

Table accompanies news release dated April 20, 2022



Hole ID	Zone/Deposit	From (m)	To (m)	Length (m)	Au (g/t)	UTM East	UTM North	Elevation	Azimuth °	Dip °	Hole Length (m)
<b>SWRC077</b>	Sewum	29.0	35.0	6.0	0.49	521268	627871	112	120	-50	180
and		54.0	56.0	2.0	0.36						
and		68.0	83.0	<b>15.0</b>	<b>0.76</b>						
and		89.0	92.0	3.0	0.62						
and		117.0	119.0	2.0	0.40						
and		126.0	131.0	5.0	0.40						
and		138.0	140.0	2.0	0.28						
and		151.0	153.0	2.0	0.35						
and		163.0	165.0	2.0	0.40						
<b>SWRC078</b>	Sewum		no significant results			520197	626036	83	120	-60	270
<b>SWRC079</b>	Sewum	207.0	209.0	2.0	0.37	520334	626242	104	120	-60	294
and		260.0	262.0	2.0	1.78						
and		278.0	284.0	6.0	0.98						
<b>SWRC080</b>	Sewum	149.0	159.0	<b>10.0</b>	<b>1.35</b>	520405	626279	113	120	-60	204
and		166.0	168.0	2.0	0.49						
<b>SWRC081</b>	Sewum		no significant results			520380	626293	104	120	-60	250
<b>SWRC082</b>	Sewum	36.0	60.0	<b>24.0</b>	<b>2.02</b>	520483	626291	115	120	-50	246
and		96.0	111.0	15.0	0.40						
and		222.0	224.0	2.0	0.55						
<b>SWRC083</b>	Sewum	86.0	108.0	<b>22.0</b>	<b>1.97</b>	520459	626301	124	120	-60	252
and		140.0	141.0	1.0	0.83						
<b>SWRC084</b>	Sewum	115.0	134.0	<b>19.0</b>	<b>1.41</b>	520472	626357	114	120	-60	250
<b>SWRC085</b>	Sewum	4.0	12.0	8.0	0.43	521395	628651	191	120	-50	100
and		42.0	44.0	2.0	0.36						
and		63.0	64.0	1.0	0.31						
<b>SWRC086</b>	Sewum	131.0	133.0	2.0	0.46	521353	628672	198	120	-50	150
<b>SWRC087</b>	Sewum	0.0	1.0	1.0	0.66	521415	628352	145	120	-50	120
and		84.0	86.0	2.0	0.48						

## Newcore Gold Ltd. | Enchi Gold Project

2020 - 2022 Drill Results

Table accompanies news release dated April 20, 2022



Hole ID	Zone/Deposit	From (m)	To (m)	Length (m)	Au (g/t)	UTM East	UTM North	Elevation	Azimuth °	Dip °	Hole Length (m)
<b>SWRC088</b>	Sewum	7.0	18.0	11.0	0.32	521366	628375	145	120	-50	180
and		34.0	36.0	2.0	0.29						
and		56.0	63.0	7.0	0.35						
<b>SWRC089</b>	Sewum	12.0	13.0	1.0	0.33	521412	628244	127	120	-50	102
and		43.0	45.0	2.0	0.31						
and		47.0	49.0	2.0	0.30						
and		60.0	62.0	2.0	0.38						
<b>SWRC090</b>	Sewum	0.0	1.0	1.0	0.52	521370	628269	137	120	-50	156
and		66.0	68.0	2.0	0.29						
and		114.0	116.0	2.0	0.46						
and		119.0	121.0	2.0	0.73						
<b>SWRC091</b>	Sewum	4.0	5.0	1.0	0.32	521371	628158	107	120	-50	100
and		60.0	61.0	1.0	0.30						
and		81.0	82.0	1.0	0.40						
and		95.0	99.0	4.0	0.81						
<b>SWRC092</b>	Sewum	90.0	91.0	1.0	0.71	521270	627986	106	120	-50	220
and		140.0	148.0	8.0	0.37						
and		196.0	198.0	2.0	0.43						
<b>SWRC093</b>	Sewum	8.0	11.0	3.0	1.48	521364	627948	102	120	-50	168
and		32.0	49.0	<b>17.0</b>	<b>0.60</b>						
and		61.0	164.0	<b>103.0</b>	<b>0.82</b>						

## Newcore Gold Ltd. | Enchi Gold Project

2020 - 2022 Drill Results

Table accompanies news release dated April 20, 2022



Hole ID	Zone/Deposit	From (m)	To (m)	Length (m)	Au (g/t)	UTM East	UTM North	Elevation	Azimuth °	Dip °	Hole Length (m)
<b>SWRC094</b>	Sewum	86.0	88.0	2.0	0.33	521225	627895	113	120	-50	254
and		91.0	94.0	3.0	0.32						
and		108.0	111.0	3.0	1.19						
and		115.0	131.0	<b>16.0</b>	<b>1.26</b>						
and		147.0	150.0	3.0	0.55						
and		158.0	164.0	6.0	1.51						
and		175.0	183.0	<b>8.0</b>	<b>2.35</b>						
and		187.0	195.0	8.0	0.71						
and		246.0	252.0	6.0	0.37						
<b>SWRC095</b>	Sewum	27.0	28.0	1.0	0.95	521155	627863	119	120	-50	242
and		122.0	124.0	2.0	1.63						
and		181.0	195.0	14.0	0.53						
and		233.0	238.0	5.0	1.16						
<b>SWRC096</b>	Sewum	0.0	1.0	1.0	2.44	521165	627779	105	120	-50	200
and		66.0	67.0	1.0	1.56						
and		83.0	84.0	1.0	0.54						
and		92.0	108.0	<b>16.0</b>	<b>0.69</b>						
and		136.0	138.0	2.0	0.40						
and		143.0	192.0	49.0	0.32						
<b>SWRC097</b>	Sewum	2.0	3.0	1.0	0.31	521164	627439	106	120	-50	180
and		22.0	23.0	1.0	0.36						
and		155.0	156.0	1.0	0.62						
<b>SWRC098</b>	Sewum	7.0	12.0	5.0	0.29	521375	628065	100	120	-50	150
and		59.0	60.0	1.0	0.66						
<b>SWRC099</b>	Sewum	9.0	10.0	1.0	0.42	521332	628166	110	120	-50	150
		94.0	96.0	2.0	0.21						
		118.0	130.0	<b>12.0</b>	<b>0.73</b>						
		136.0	138.0	2.0	0.29						



## Newcore Gold Ltd. | Enchi Gold Project

2020 - 2022 Drill Results

Table accompanies news release dated April 20, 2022



Hole ID	Zone/Deposit	From (m)	To (m)	Length (m)	Au (g/t)	UTM East	UTM North	Elevation	Azimuth °	Dip °	Hole Length (m)
<b>SWRC100</b>	Sewum	116.0	122.0	6.0	0.60	520433	626319	116	120	-60	252
and		144.0	158.0	<b>14.0</b>	<b>0.74</b>						
and		189.0	190.0	1.0	1.06						
and		195.0	196.0	1.0	0.41						
<b>SWRC101</b>	Sewum	154.0	171.0	17.0	0.62	520451	626371	112	120	-60	220
<b>SWRC102</b>	Sewum	35.0	36.0	1.0	0.32	520332	626142	93	120	-60	200
<b>SWRC103</b>	Sewum	19.0	20.0	1.0	0.34	520348	626128	98	120	-50	174
and		63.0	72.0	9.0	0.77						
and		78.0	79.0	1.0	0.30						
and		83.0	87.0	4.0	0.47						
<b>SWRC104</b>	Sewum	26.0	27.0	1.0	0.95	520571	626500	93	120	-60	264
and		126.0	127.0	1.0	0.43						
and		146.0	150.0	4.0	0.92						
and		215.0	216.0	1.0	0.70						
<b>SWRC105</b>	Sewum	7.0	9.0	2.0	0.28	521415	628026	106	120	-50	274
and		84.0	85.0	1.0	0.65						
and		99.0	101.0	2.0	0.33						
<b>SWRC106</b>	Sewum		no significant results			521448	627900	104	120	-50	234
<b>SWRC107</b>	Sewum	4.0	81.0	<b>77.0</b>	<b>0.63</b>	521408	627918	102	120	-50	186
including		4.0	40.0	<b>36.0</b>	<b>0.72</b>						
and incl.		28.0	37.0	<b>9.0</b>	<b>1.82</b>						
including		48.0	80.0	<b>32.0</b>	<b>0.70</b>						
and incl.		53.0	67.0	<b>14.0</b>	<b>1.22</b>						
and		139.0	186.0	<b>47.0</b>	<b>0.39</b>						
<b>SWRC108</b>	Sewum	78.0	79.0	1.0	0.31	521444	628077	114	120	-50	300
and		139.0	143.0	4.0	0.42						
<b>SWRC109</b>	Sewum	116.0	117.0	1.0	0.24	521438	627962	104	120	-50	262
and		154.0	155.0	1.0	0.23						
<b>SWRC110</b>	Sewum		no significant results			521480	627942	105	120	-50	222

## Newcore Gold Ltd. | Enchi Gold Project

2020 - 2022 Drill Results

Table accompanies news release dated April 20, 2022



Hole ID	Zone/Deposit	From (m)	To (m)	Length (m)	Au (g/t)	UTM East	UTM North	Elevation	Azimuth °	Dip °	Hole Length (m)
<b>SWRC111</b>	Sewum	5.0	11.0	6.0	0.25	521341	627895	108	120	-50	300
and		63.0	76.0	13.0	0.22						
and		90.0	92.0	2.0	0.49						
and		108.0	109.0	1.0	0.42						
and		112.0	113.0	1.0	0.37						
and		115.0	124.0	9.0	0.66						
and		175.0	176.0	1.0	0.36						
and		180.0	181.0	1.0	0.40						
and		214.0	215.0	1.0	0.31						
and		248.0	254.0	6.0	0.28						
and		262.0	263.0	1.0	0.38						
and		287.0	298.0	11.0	0.23						
<b>SWRC112</b>	Sewum	32.0	33.0	1.0	0.38						
and		51.0	57.0	6.0	0.44						
and		116.0	117.0	1.0	0.46						
and		149.0	150.0	1.0	0.45						
and		185.0	186.0	1.0	0.30						
and		213.0	216.0	3.0	0.29						
<b>SWRC113</b>	Sewum	46.0	48.0	2.0	0.61	521387	627988	98	120	-50	283
and		61.0	65.0	4.0	0.33						
and		84.0	86.0	2.0	0.32						
and		164.0	166.0	2.0	0.29						
and		207.0	208.0	1.0	0.50						
and		220.0	283.0	63.0	0.24						
including		231.0	233.0	2.0	0.49						
including		255.0	257.0	2.0	0.42						
including		271.0	283.0	12.0	0.39						

## Newcore Gold Ltd. | Enchi Gold Project

2020 - 2022 Drill Results

Table accompanies news release dated April 20, 2022



Hole ID	Zone/Deposit	From (m)	To (m)	Length (m)	Au (g/t)	UTM East	UTM North	Elevation	Azimuth °	Dip °	Hole Length (m)
<b>SWDD070A</b>	Sewum	131.4	131.8	0.4	2.48	521129	627940	118	120	-57	320.4
and		212.4	213.0	0.6	0.42						
and		243.0	244.0	1.0	0.38						
and		285.5	298.2	12.7	0.17						
<b>SWDD071B</b>	Sewum	77.5	79.0	1.5	0.63	521312	627963	100	120	-55	374.5
and		104.0	118.0	<b>14.0</b>	<b>2.33</b>						
including		110.0	117.0	<b>7.0</b>	<b>4.08</b>						
and incl.		116.0	117.0	<b>1.0</b>	<b>20.54</b>						
and		123.0	127.0	<b>4.0</b>	<b>0.67</b>						
and		149.0	151.0	2.0	0.93						
and		162.0	166.1	4.1	0.33						
and		171.0	172.0	1.0	0.31						
and		242.0	244.0	2.0	0.30						
and		277.6	291.0	<b>13.4</b>	<b>0.40</b>						
<b>SWDD072</b>	Sewum	134.0	135.4	1.4	0.23	521119	627799	111	120	-55	259.8
and		184.3	186.2	1.9	0.27						
and		221.3	228.0	6.7	0.79						
<b>SWDD073</b>	Sewum	159.0	164.1	5.1	0.75	521264	628205	131	120	-55	350.1
and		168.0	180.8	12.8	0.34						
and		195.5	202.0	<b>6.5</b>	<b>1.61</b>						
and		220.2	223.7	3.5	0.78						
and		231.2	237.3	6.1	0.56						
including		231.2	233.0	<b>1.8</b>	<b>1.24</b>						
and		257.2	258.0	0.8	0.42						
and		273.3	284.5	<b>11.2</b>	<b>0.63</b>						
including		283.0	284.5	<b>1.5</b>	<b>2.38</b>						
and		294.0	297.0	3.0	0.57						
and		303.0	307.0	4.0	0.31						
and		319.7	327.0	7.3	0.64						

## Newcore Gold Ltd. | Enchi Gold Project

2020 - 2022 Drill Results

Table accompanies news release dated April 20, 2022



Hole ID	Zone/Deposit	From (m)	To (m)	Length (m)	Au (g/t)	UTM East	UTM North	Elevation	Azimuth °	Dip °	Hole Length (m)
<b>SWDD074</b>	Sewum	6.0	9.0	3.0	0.26	521313	628290	143	120	-55	329.2
and		57.2	60.4	3.2	0.42						
and		107.0	108.0	1.0	0.30						
and		114.0	115.0	1.0	1.01						
and		149.4	150.0	0.6	0.65						
and		236.1	237.4	1.3	0.28						
<b>SWDD075</b>	Sewum	2.0	18.0	<b>16.0</b>	<b>0.58</b>	521303	628694	195	120	-52	389.3
and		101.0	108.3	7.3	0.31						
and		125.0	125.9	0.9	1.75						
and		344.3	345.0	0.7	1.05						
and		350.0	365.6	<b>15.6</b>	<b>0.98</b>						
including		359.0	365.6	<b>6.6</b>	<b>2.00</b>						
<b>SWDD076</b>	Sewum	130.0	146.0	<b>16.0</b>	<b>0.54</b>	520522	626435	107	120	-55	275.1
including		131.0	132.0	<b>1.0</b>	<b>1.64</b>						
and		160.0	161.0	1.0	0.49						
<b>SWDD077</b>	Sewum	148.0	149.0	1.0	0.53	520396	626389	102	120	-55	302.1
and		224.0	233.0	<b>9.0</b>	<b>1.23</b>						
including		227.0	230.1	<b>3.1</b>	<b>1.98</b>						
and		243.0	245.0	2.0	0.45						
and		253.3	255.0	1.7	0.74						
and		289.2	290.1	0.9	0.32						
<b>SWDD078</b>	Sewum	250.0	250.8	0.8	0.63	520300	626255	99	120	-60	371.4
and		324.0	331.0	7.0	0.39						

## Newcore Gold Ltd. | Enchi Gold Project

2020 - 2022 Drill Results

Table accompanies news release dated April 20, 2022



Hole ID	Zone/Deposit	From (m)	To (m)	Length (m)	Au (g/t)	UTM East	UTM North	Elevation	Azimuth °	Dip °	Hole Length (m)
<b>SWDD079A</b>	Sewum	39.4	56.0	16.6	0.20	521289	628910	174	120	-60	404.6
and		62.2	72.0	9.8	0.21						
and		75.8	79.0	3.2	0.38						
and		120.0	132.0	12.0	0.33						
and		173.6	187.0	13.4	0.52						
and		191.9	195.0	3.1	0.56						
and		209.9	212.0	2.1	0.37						
and		220.2	221.0	0.8	0.37						
and		307.0	310.0	3.0	0.28						
and		313.0	314.0	1.0	0.47						
and		404.0	405.0	1.0	0.34						
<b>SWDD080</b>	Sewum	214.0	215.0	1.0	0.52	520308	626179	87	120	-70	282.2
and		247.1	249.0	1.9	0.42						
<b>SWRC143</b>	Sewum Ext.	5.0	19.0	<b>14.0</b>	<b>1.49</b>	520505	626275	122	120	-55	50
and		26.0	27.0	1.0	0.87						
<b>SWRC144</b>	Sewum Ext.	81.0	94.0	<b>13.0</b>	<b>1.72</b>	520501	626343	118	120	-60	120
<b>SWRC145</b>	Sewum Ext.	8.0	34.0	26.0	0.41	520569	626355	113	120	-55	70
<b>SWRC146</b>	Sewum Ext.	47.0	51.0	4.0	0.38	520550	626367	120	120	-55	100
and		62.0	64.0	2.0	1.32						
<b>SWRC147</b>	Sewum Ext.	6.0	20.0	14.0	0.45	520615	626387	108	120	-55	40
<b>SWRC148</b>	Sewum Ext.	66.0	68.0	2.0	1.37	520576	626411	105	120	-65	110
and		84.0	86.0	2.0	0.36						
<b>SWRC149</b>	Sewum Ext. 2	47.0	49.0	2.0	0.29	520996	626322	98	120	-50	100
<b>SWRC150</b>	Sewum Ext. 2	5.0	7.0	2.0	0.55	520893	626162	97	120	-50	102
<b>SWRC151</b>	Sewum Ext. 2	16.0	17.0	1.0	0.53	520775	626215	130	120	-50	102
and		29.0	39.0	<b>10.0</b>	<b>1.10</b>						
and		72.0	92.0	<b>20.0</b>	<b>0.67</b>						
including		79.0	84.0	<b>5.0</b>	<b>1.23</b>						

## Newcore Gold Ltd. | Enchi Gold Project

2020 - 2022 Drill Results

Table accompanies news release dated April 20, 2022



Hole ID	Zone/Deposit	From (m)	To (m)	Length (m)	Au (g/t)	UTM East	UTM North	Elevation	Azimuth °	Dip °	Hole Length (m)
<b>SWRC152</b>	Sewum Ext. 2	2.0	8.0	<b>6.0</b>	<b>5.84</b>	520831	626189	189	120	-50	100
including		2.0	3.0	<b>1.0</b>	<b>26.82</b>						
<b>SWRC153</b>	Sewum Ext. 2	0.0	3.0	3.0	0.69	520845	626392	110	120	-50	108
and		11.0	14.0	3.0	0.60						
<b>SWRC154</b>	Sewum Ext. 2		no significant results			520779	626420	117	120	-50	114
<b>SWRC155</b>	Sewum Ext. 2	49.0	50.0	1.0	0.51	520915	626351	94	120	-50	130
and		111.0	120.0	9.0	0.41						
and		124.0	126.0	2.0	0.43						
<b>SWRC156</b>	Sewum Ext.		no significant results			520654	626422	98	120	-55	50
<b>SWRC157</b>	Sewum Ext.	96.0	98.0	2.0	0.65	520589	626463	89	120	-55	120
<b>SWRC158</b>	Sewum Ext.	28.0	30.0	2.0	1.30	520623	626437	87	120	-55	100
<b>SWRC159</b>	Sewum Ext.	95.0	102.0	7.0	1.06	520522	626383	113	120	-55	140
<b>SWRC160</b>	Sewum Ext.	123.0	141.0	<b>18.0</b>	<b>2.14</b>	520491	626397	117	120	-55	160
including		124.0	128.0	<b>4.0</b>	<b>3.01</b>						
and incl.		129.0	136.0	<b>7.0</b>	<b>2.87</b>						
<b>SWRC161</b>	Sewum Ext.		no significant results			520491	626397	117	120	-60	40
<b>SWRC162</b>	Sewum Ext.	0.0	2.0	2.0	0.26	520393	626096	96	120	-60	50
and		29.0	33.0	4.0	0.37						
<b>SWRC163</b>	Sewum Ext.	0.0	24.0	24.0	0.39	520381	626103	97	120	-60	70
including		4.0	10.0	6.0	0.80						
<b>SWRC164</b>	Sewum Ext.	3.0	28.0	<b>25.0</b>	<b>1.98</b>	520402	626147	92	120	-60	70
and		35.0	37.0	2.0	0.64						
and		48.0	70.0	<b>22.0</b>	<b>0.58</b>						
<b>SWRC165</b>	Sewum Ext.	24.0	26.0	2.0	0.46	520374	626160	92	120	-60	100
and		73.0	91.0	<b>18.0</b>	<b>1.31</b>						
including		83.0	85.0	<b>2.0</b>	<b>8.28</b>						
<b>SWRC166</b>	Sewum Ext.	117.0	120.0	3.0	2.36	520355	626174	93	120	-55	140
and		126.0	132.0	6.0	0.29						

## Newcore Gold Ltd. | Enchi Gold Project

2020 - 2022 Drill Results

Table accompanies news release dated April 20, 2022



Hole ID	Zone/Deposit	From (m)	To (m)	Length (m)	Au (g/t)	UTM East	UTM North	Elevation	Azimuth °	Dip °	Hole Length (m)
<b>SWRC167</b>	Sewum Ext. 2	46.0	47.0	1.0	0.54	520717	626011	95	120	-50	100
and		73.0	74.0	1.0	0.40						
<b>SWRC168</b>	Sewum Ext. 2	4.0	8.0	4.0	0.48	520655	626046	101	120	-50	100
and		35.0	47.0	<b>12.0</b>	<b>0.85</b>						
and		72.0	85.0	<b>13.0</b>	<b>0.70</b>						
and		91.0	100.0	9.0	0.49						
<b>SWRC169</b>	Sewum Ext.	1.0	9.0	8.0	0.50	520441	626176	107	120	-55	85
and		15.0	29.0	<b>14.0</b>	<b>0.83</b>						
including		24.0	27.0	<b>3.0</b>	<b>2.50</b>						
and		36.0	37.0	1.0	0.30						
<b>SWRC170</b>	Sewum Ext. 2	96.0	100.0	4.0	0.30	520633	626060	101	120	-55	130
and		122.0	124.0	2.0	0.72						
<b>NBRC016</b>	Nyam	23.0	29.0	6.0	1.03	530221	637264	81	300	-60	130
and		50.0	54.0	4.0	0.40						
and		68.0	86.0	18.0	0.63						
and		97.0	100.0	3.0	0.48						
and		109.0	112.0	3.0	0.55						
<b>NBRC017</b>	Nyam	8.0	53.0	<b>45.0</b>	<b>1.38</b>	530241	637278	69	300	-60	150
including		8.0	30.0	<b>22.0</b>	<b>0.74</b>						
and incl.		47.0	53.0	<b>6.0</b>	<b>6.25</b>						
and		64.0	66.0	2.0	1.88						
and		83.0	93.0	10.0	0.41						
and		102.0	107.0	5.0	0.54						
and		135.0	137.0	2.0	0.34						
<b>NBRC018</b>	Nyam	10.0	12.0	2.0	0.25	530180	637314	76	300	-60	84
and		36.0	42.0	6.0	0.32						
<b>NBRC019</b>	Nyam	80.0	82.0	2.0	0.35	530845	638277	81	300	-60	156
and		91.0	108.0	<b>17.0</b>	<b>1.20</b>						

## Newcore Gold Ltd. | Enchi Gold Project

2020 - 2022 Drill Results

Table accompanies news release dated April 20, 2022



Hole ID	Zone/Deposit	From (m)	To (m)	Length (m)	Au (g/t)	UTM East	UTM North	Elevation	Azimuth °	Dip °	Hole Length (m)
<b>NBRC020</b>	Nyam	51.0	60.0	<b>9.0</b>	<b>1.14</b>	530506	637714	86	300	-60	150
and		73.0	102.0	<b>29.0</b>	<b>0.94</b>						
and		110.0	120.0	<b>10.0</b>	<b>1.18</b>						
and		139.0	143.0	4.0	0.41						
<b>NBRC021</b>	Nyam	15.0	17.0	2.0	0.33	530474	637679	93	300	-60	130
and		32.0	34.0	2.0	0.73						
and		50.0	54.0	4.0	1.56						
and		63.0	84.0	<b>21.0</b>	<b>1.42</b>						
and		90.0	96.0	<b>6.0</b>	<b>1.26</b>						
and		102.0	105.0	3.0	0.36						
and		109.0	119.0	10.0	0.52						
and		126.0	129.0	3.0	0.65						
<b>NBRC022</b>	Nyam	8.0	10.0	2.0	1.96	530435	637610	102	300	-60	150
and		70.0	90.0	<b>20.0</b>	<b>1.72</b>						
and		116.0	119.0	3.0	0.36						
<b>NBRC023</b>	Nyam	49.0	51.0	2.0	0.19	530712	638187	98	300	-60	80
<b>NBRC024</b>	Nyam	22.0	26.0	4.0	0.67	530262	637265	78	300	-60	156
and		41.0	42.0	1.0	0.89						
and		57.0	84.0	<b>27.0</b>	<b>1.34</b>						
and		93.0	102.0	<b>9.0</b>	<b>3.45</b>						
and		113.0	120.0	7.0	0.47						
and		137.0	146.0	9.0	0.38						
<b>NBRC025</b>	Nyam	33.0	35.0	2.0	0.51	530284	637253	78	300	-60	174
and		72.0	73.0	1.0	0.41						
and		92.0	124.0	<b>32.0</b>	<b>0.84</b>						
and		136.0	139.0	3.0	0.51						
and		151.0	162.0	11.0	0.55						



## Newcore Gold Ltd. | Enchi Gold Project

2020 - 2022 Drill Results

Table accompanies news release dated April 20, 2022



Hole ID	Zone/Deposit	From (m)	To (m)	Length (m)	Au (g/t)	UTM East	UTM North	Elevation	Azimuth °	Dip °	Hole Length (m)
<b>NBRC026</b>	Nyam	64.0	66.0	2.0	0.36	530262	637240	75	300	-60	204
and		79.0	91.0	12.0	0.42						
and		96.0	98.0	2.0	0.86						
and		105.0	109.0	<b>4.0</b>	<b>2.39</b>						
and		116.0	117.0	1.0	0.65						
and		125.0	127.0	2.0	1.00						
and		145.0	148.0	3.0	0.57						
and		170.0	173.0	3.0	0.41						
and		177.0	179.0	2.0	0.34						
<b>NBRC027</b>	Nyam	3.0	9.0	<b>6.0</b>	<b>2.83</b>	530200	637284	74	300	-60	110
and		39.0	55.0	16.0	0.48						
and		60.0	62.0	2.0	0.36						
<b>NBRC028</b>	Nyam	32.0	36.0	4.0	0.46	530122	637161	76	300	-60	132
and		60.0	74.0	14.0	0.49						
<b>NBRC029</b>	Nyam	10.0	11.0	1.0	1.15	530142	637152	78	300	-60	150
and		59.0	61.0	2.0	0.82						
and		87.0	89.0	2.0	0.53						
<b>NBRC030</b>	Nyam	69.0	85.0	<b>16.0</b>	<b>1.17</b>	530180	637146	77	300	-60	180
and		102.0	104.0	2.0	0.53						
and		110.0	115.0	5.0	1.48						
and		150.0	155.0	5.0	0.34						
and		158.0	160.0	2.0	0.32						
<b>NBRC031</b>	Nyam	28.0	29.0	1.0	0.49	530297	637242	80	300	-60	210
and		104.0	106.0	2.0	0.32						
and		124.0	148.0	24.0	0.31						
and		158.0	164.0	6.0	1.48						
and		177.0	188.0	<b>11.0</b>	<b>1.28</b>						
<b>NBRC032</b>	Nyam	170.0	226.0	56.0	0.40	530507	637573	72	300	-60	258

## Newcore Gold Ltd. | Enchi Gold Project

2020 - 2022 Drill Results

Table accompanies news release dated April 20, 2022



Hole ID	Zone/Deposit	From (m)	To (m)	Length (m)	Au (g/t)	UTM East	UTM North	Elevation	Azimuth °	Dip °	Hole Length (m)
<b>NBRC033</b>	Nyam	151.0	153.0	2.0	0.57	530909	638234	97	300	-60	264
and		201.0	214.0	13.0	1.00						
and		233.0	235.0	2.0	0.32						
<b>NBRC034</b>	Nyam	0.0	14.0	<b>14.0</b>	<b>0.59</b>	530760	638239	100	300	-60	156
<b>NBRC035</b>	Nyam	130.0	132.0	2.0	0.57	530910	638345	84	300	-60	156
and		135.0	137.0	2.0	0.54						
and		142.0	144.0	2.0	0.78						
<b>NBRC036</b>	Nyam	7.0	9.0	2.0	0.75	531135	638959	70	300	-60	102
and		87.0	88.0	1.0	0.38						
<b>NBRC037</b>	Nyam	6.0	7.0	1.0	0.34	531161	638947	79	300	-60	156
and		20.0	21.0	1.0	0.69						
and		68.0	77.0	9.0	0.46						
and		81.0	83.0	2.0	0.48						
<b>NBRC038</b>	Nyam	109.0	112.0	3.0	0.52	531190	638936	68	300	-60	204
and		122.0	126.0	4.0	0.42						
and		130.0	132.0	2.0	0.33						
<b>NBRC039</b>	Nyam	7.0	29.0	<b>22.0</b>	<b>0.50</b>	531096	638870	72	300	-60	114
<b>NBRC040</b>	Nyam	52.0	70.0	18.0	0.30	531120	638857	75	300	-60	156
and		76.0	83.0	<b>7.0</b>	<b>1.05</b>						
<b>NBRC041</b>	Nyam	111.0	131.0	20.0	0.39	531147	638847	74	300	-60	201
<b>NBRC042A</b>	Nyam	9.0	15.0	6.0	0.40	531054	638780	83	300	-60	102
and		24.0	37.0	<b>13.0</b>	<b>0.62</b>						
<b>NBRC043</b>	Nyam	104.0	124.0	20.0	0.31	531099	638758	76	300	-60	180
<b>NBRC044</b>	Nyam	8.0	10.0	2.0	0.98	530696	638123	132	300	-60	162
and		17.0	20.0	3.0	0.53						
and		41.0	67.0	<b>26.0</b>	<b>1.17</b>						
<b>NBRC045</b>	Nyam	165.0	174.0	9.0	0.81	530544	637644	115	300	-60	252
and		179.0	219.0	<b>40.0</b>	<b>1.57</b>						
including		185.0	194.0	<b>9.0</b>	<b>5.40</b>						

## Newcore Gold Ltd. | Enchi Gold Project

2020 - 2022 Drill Results

Table accompanies news release dated April 20, 2022



Hole ID	Zone/Deposit	From (m)	To (m)	Length (m)	Au (g/t)	UTM East	UTM North	Elevation	Azimuth °	Dip °	Hole Length (m)
<b>NBRC046</b>	Nyam	116.0	119.0	3.0	0.52	530527	637695	104	300	-60	186
and		124.0	147.0	<b>23.0</b>	<b>0.60</b>						
<b>NBRC047</b>	Nyam	182.0	205.0	23.0	0.48	530572	637672	112	300	-60	247
and		212.0	216.0	4.0	0.40						
and		222.0	247.0	<b>25.0</b>	<b>1.94</b>						
including		227.0	234.0	<b>7.0</b>	<b>5.78</b>						
<b>NBRC048</b>	Nyam	79.0	85.0	6.0	0.33	530333	637622	101	300	-60	114
and		95.0	101.0	6.0	0.31						
and		104.0	114.0	10.0	0.30						
<b>NBRC049</b>	Nyam	7.0	10.0	3.0	0.39	530360	637607	102	300	-60	134
and		13.0	14.0	1.0	0.37						
<b>NBRC050</b>	Nyam	11.0	13.0	<b>2.0</b>	<b>1.23</b>	530339	637516	96	300	-60	120
and		23.0	27.0	<b>4.0</b>	<b>1.03</b>						
and		35.0	45.0	<b>10.0</b>	<b>0.67</b>						
and		50.0	53.0	3.0	0.35						
<b>NBRC051</b>	Nyam	15.0	16.0	1.0	0.30	530325	637479	93	300	-60	126
and		28.0	31.0	<b>3.0</b>	<b>0.99</b>						
and		38.0	47.0	<b>9.0</b>	<b>0.69</b>						
and		57.0	65.0	<b>8.0</b>	<b>0.51</b>						
<b>NBRC052</b>	Nyam	4.0	7.0	3.0	1.28	530267	637402	87	300	-60	115
and		17.0	22.0	5.0	0.31						
and		24.0	26.0	2.0	0.34						
and		38.0	40.0	2.0	0.34						
and		67.0	69.0	2.0	1.97						
<b>NBRC053</b>	Nyam	9.0	11.0	<b>2.0</b>	<b>0.86</b>	530292	637376	79	300	-60	155
and		42.0	44.0	2.0	0.32						
and		48.0	57.0	<b>9.0</b>	<b>1.32</b>						
and		100.0	107.0	7.0	0.33						
<b>NBRC054</b>	Nyam			no significant results		530206	637384	72	300	-60	115

## Newcore Gold Ltd. | Enchi Gold Project

2020 - 2022 Drill Results

Table accompanies news release dated April 20, 2022



Hole ID	Zone/Deposit	From (m)	To (m)	Length (m)	Au (g/t)	UTM East	UTM North	Elevation	Azimuth °	Dip °	Hole Length (m)
<b>NBRC055</b>	Nyam	12.0	21.0	9.0	0.38	530229	637372	78	300	-60	144
and		102.0	103.0	1.0	1.04						
<b>NBRC056</b>	Nyam		no significant results			530086	637145	80	300	-60	153
<b>NBRC057</b>	Nyam	102.0	103.0	1.0	0.31	530012	637064	77	300	-60	150
<b>NBRC058</b>	Nyam	17.0	19.0	2.0	1.11	530119	637014	75	300	-60	162
and		94.0	95.0	2.0	0.29						
and		106.0	108.0	2.0	0.68						
<b>NBRC059B</b>	Nyam	97.0	106.0	10.0	1.60	530177	637089	73	300	-60	150
<b>NBRC060</b>	Nyam	7.0	8.0	1.0	0.74	529938	636854	84	300	-60	174
and		84.0	85.0	1.0	0.22						
<b>NBRC061</b>	Nyam		no significant results			529759	636735	106	300	-60	156
<b>NBRC062</b>	Nyam	60.0	61.0	1.0	0.26	529834	636686	99	300	-60	162
and		75.0	76.0	1.0	0.52						
<b>NBRC063</b>	Nyam		no significant results			529657	636560	114	300	-60	150
<b>NBRC064</b>	Nyam	58.0	59.0	1.0	0.49	529735	636517	113	300	-60	150
<b>NBRC065</b>	Nyam		no significant results			529555	636386	117	300	-60	156
<b>NBRC066</b>	Nyam	89.0	104.0	15.0	0.52	529631	636341	94	300	-60	153
<b>NBRC067</b>	Nyam	49.0	50.0	1.0	0.36	530332	637356	79	300	-60	184
and		87.0	89.0	2.0	0.35						
and		111.0	113.0	2.0	0.43						
and		129.0	130.0	1.0	1.14						
and		147.0	184.0	37.0	0.54						
including		159.0	164.0	5.0	1.69						
<b>NBRC068</b>	Nyam	48.0	49.0	1.0	1.03	530363	637340	85	300	-60	252
and		104.0	105.0	1.0	0.34						
and		121.0	122.0	1.0	1.66						
and		153.0	154.0	1.0	0.35						
and		201.0	203.0	2.0	0.93						
and		234.0	238.0	4.0	0.62						

## Newcore Gold Ltd. | Enchi Gold Project

2020 - 2022 Drill Results

Table accompanies news release dated April 20, 2022



Hole ID	Zone/Deposit	From (m)	To (m)	Length (m)	Au (g/t)	UTM East	UTM North	Elevation	Azimuth °	Dip °	Hole Length (m)
<b>NBRC069</b>	Nyam	16.0	25.0	9.0	0.60	530308	637454	89	300	-60	144
and		33.0	38.0	5.0	0.58						
and		56.0	58.0	2.0	0.41						
<b>NBRC070</b>	Nyam	79.0	80.0	1.0	1.11	530251	637110	81	300	-50	240
and		148.0	149.0	1.0	0.52						
and		181.0	183.0	2.0	0.58						
and		195.0	199.0	4.0	1.02						
and		231.0	234.0	3.0	0.75						
<b>NBRC071</b>	Nyam	60.0	65.0	5.0	0.44	530354	637456	93	300	-50	135
and		92.0	93.0	1.0	1.53						
and		101.0	118.0	17.0	0.72						
<b>NBRC072</b>	Nyam	59.0	61.0	2.0	0.58	530402	637545	95	300	-60	140
and		76.0	78.0	2.0	0.46						
and		85.0	105.0	20.0	0.58						
and		127.0	129.0	2.0	0.62						
<b>NBRC073</b>	Nyam	26.0	27.0	1.0	0.40	530425	637572	98	300	-60	142
and		74.0	131.0	<b>57.0</b>	<b>0.78</b>						
including		94.0	103.0	<b>9.0</b>	<b>1.34</b>						
<b>NBRC074</b>	Nyam	125.0	131.0	6.0	0.45	530457	637552	94	300	-60	197
and		141.0	147.0	6.0	0.55						
and		163.0	178.0	15.0	0.55						
including		157.0	159.0	2.0	0.99						
and		192.0	194.0	2.0	1.42						
<b>NBRC075</b>	Nyam	0.0	35.0	<b>35.0</b>	<b>2.04</b>	530404	637629	99	300	-60	144
including		8.0	16.0	<b>8.0</b>	<b>4.89</b>						
and incl.		9.0	11.0	<b>2.0</b>	<b>9.60</b>						
and		108.0	110.0	2.0	0.27						

## Newcore Gold Ltd. | Enchi Gold Project

2020 - 2022 Drill Results

Table accompanies news release dated April 20, 2022



Hole ID	Zone/Deposit	From (m)	To (m)	Length (m)	Au (g/t)	UTM East	UTM North	Elevation	Azimuth °	Dip °	Hole Length (m)
<b>NBRC076</b>	Nyam	1.0	51.0	<b>50.0</b>	<b>0.85</b>	530442	637701	96	300	-60	120
including		1.0	14.0	<b>13.0</b>	<b>1.18</b>						
and incl.		31.0	39.0	<b>8.0</b>	<b>2.10</b>						
<b>NBRC077</b>	Nyam	52.0	60.0	8.0	0.51	530488	637722	83	300	-60	183
and		69.0	98.0	<b>29.0</b>	<b>1.13</b>						
and		119.0	126.0	7.0	0.49						
and		141.0	145.0	4.0	0.39						
<b>NBRC078</b>	Nyam	27.0	30.0	3.0	0.57	530501	637751	85	300	-55	144
and		36.0	115.0	<b>79.0</b>	<b>0.53</b>						
<b>NBRC079</b>	Nyam	92.0	119.0	<b>27.0</b>	<b>0.89</b>	530538	637730	93	300	-55	160
including		104.0	109.0	<b>5.0</b>	<b>2.19</b>						
and		132.0	142.0	10.0	0.45						
<b>NBRC080</b>	Nyam	62.0	68.0	6.0	0.51	530536	637767	87	300	-60	180
and		81.0	83.0	2.0	0.41						
and		91.0	94.0	3.0	4.63						
and		106.0	111.0	5.0	0.96						
and		124.0	132.0	8.0	0.70						
<b>NBRC081</b>	Nyam	33.0	43.0	10.0	0.99	530615	637853	83	300	-50	144
and		94.0	101.0	7.0	0.46						
and		120.0	130.0	10.0	1.68						
<b>NBRC082</b>	Nyam	0.0	12.0	12.0	0.34	530599	637880	88	300	-60	162
and		75.0	83.0	8.0	0.52						
and		93.0	108.0	15.0	1.18						
including		93.0	97.0	4.0	2.41						
<b>NBRC083</b>	Nyam	71.0	72.0	1.0	0.32	530548	637941	84	300	-60	100
<b>NBRC084</b>	Nyam	92.0	102.0	10.0	0.93	530634	637896	88	300	-50	126
and		108.0	120.0	12.0	0.89						

## Newcore Gold Ltd. | Enchi Gold Project

2020 - 2022 Drill Results

Table accompanies news release dated April 20, 2022



Hole ID	Zone/Deposit	From (m)	To (m)	Length (m)	Au (g/t)	UTM East	UTM North	Elevation	Azimuth °	Dip °	Hole Length (m)
<b>NBRC085</b>	Nyam	0.0	18.0	<b>18.0</b>	<b>1.26</b>	530572	637961	89	300	-60	120
including		11.0	13.0	<b>2.0</b>	<b>6.46</b>						
and		82.0	85.0	3.0	0.60						
<b>NBRC086</b>	Nyam	10.0	12.0	2.0	0.32	530597	637974	89	300	-60	130
and		17.0	36.0	<b>19.0</b>	<b>1.24</b>						
and		101.0	102.0	1.0	0.45						
and		115.0	117.0	2.0	0.37						
and		121.0	128.0	7.0	0.42						
<b>NBRC087</b>	Nyam	1.0	4.0	3.0	0.51	530632	637952	95	300	-60	120
and		71.0	79.0	8.0	0.52						
and		84.0	103.0	<b>19.0</b>	<b>2.14</b>						
including		92.0	94.0	2.0	4.14						
<b>NBRC088</b>	Nyam	57.0	85.0	<b>28.0</b>	<b>0.88</b>	530616	637935	95	300	-60	110
and		80.0	82.0	2.0	5.09						
<b>NBRC089</b>	Nyam	0.0	5.0	5.0	1.86	530631	637994	103	300	-60	152
and		37.0	39.0	2.0	0.76						
and		44.0	53.0	9.0	0.92						
and		60.0	62.0	2.0	0.88						
<b>NBRC090</b>	Nyam	17.0	18.0	1.0	0.41	530663	638009	110	300	-60	160
and		23.0	24.0	1.0	0.36						
and		32.0	35.0	3.0	1.53						
and		78.0	109.0	<b>31.0</b>	<b>0.77</b>						
including		102.0	103.0	<b>1.0</b>	<b>4.92</b>						
including		107.0	108.0	<b>1.0</b>	<b>5.19</b>						
and		115.0	116.0	1.0	0.30						
and		156.0	158.0	2.0	0.34						

## Newcore Gold Ltd. | Enchi Gold Project

2020 - 2022 Drill Results

Table accompanies news release dated April 20, 2022



Hole ID	Zone/Deposit	From (m)	To (m)	Length (m)	Au (g/t)	UTM East	UTM North	Elevation	Azimuth °	Dip °	Hole Length (m)
<b>NBRC091</b>	Nyam	84.0	86.0	2.0	0.38	530704	637995	106	300	-60	204
and		91.0	103.0	12.0	1.02						
and		134.0	139.0	5.0	0.54						
and		147.0	150.0	3.0	0.61						
<b>NBRC092</b>	Nyam	9.0	13.0	4.0	0.61	530670	638079	139	300	-60	129
and		38.0	62.0	<b>24.0</b>	<b>1.79</b>						
including		51.0	55.0	<b>4.0</b>	<b>4.14</b>						
<b>NBRC093</b>	Nyam	40.0	41.0	1.0	0.33	530683	638040	130	300	-60	183
and		49.0	59.0	10.0	0.24						
and		79.0	127.0	<b>48.0</b>	<b>0.43</b>						
including		79.0	91.0	12.0	0.89						
and incl.		84.0	88.0	<b>4.0</b>	<b>1.79</b>						
including		95.0	107.0	12.0	0.54						
and incl.		99.0	102.0	<b>3.0</b>	<b>1.32</b>						
and		113.0	114.0	1.0	0.35						
and		132.0	133.0	1.0	0.51						
<b>NBRC094</b>	Nyam	0.0	2.0	2.0	0.30	530669	638118	137	300	-63	132
and		14.0	28.0	14.0	0.68						
<b>NBRC095</b>	Nyam	61.0	75.0	<b>14.0</b>	<b>0.72</b>	530726	638099	90	300	-60	138
including		70.0	74.0	<b>4.0</b>	<b>1.42</b>						
and		105.0	125.0	<b>20.0</b>	<b>0.90</b>						
including		111.0	114.0	<b>3.0</b>	<b>2.38</b>						
and		134.0	136.0	2.0	1.99						
<b>NBRC096</b>	Nyam		no significant results			530681	638193	109	300	-60	130
<b>NBRC097</b>	Nyam	10.0	35.0	<b>25.0</b>	<b>0.87</b>	530805	638296	84	300	-60	82
including		20.0	24.0	<b>4.0</b>	<b>2.59</b>						



## Newcore Gold Ltd. | Enchi Gold Project

2020 - 2022 Drill Results

Table accompanies news release dated April 20, 2022



Hole ID	Zone/Deposit	From (m)	To (m)	Length (m)	Au (g/t)	UTM East	UTM North	Elevation	Azimuth °	Dip °	Hole Length (m)
<b>NBRC098</b>	Nyam	15.0	19.0	4.0	0.88	530925	638536	136	300	-60	126
and		28.0	30.0	2.0	0.58						
and		44.0	46.0	2.0	0.45						
and		52.0	54.0	2.0	0.56						
<b>NBRC099</b>	Nyam	13.0	35.0	22.0	0.34	530901	638474	112	300	-60	130
and		46.0	48.0	2.0	0.43						
and		80.0	84.0	4.0	0.44						
and		110.0	112.0	2.0	0.25						
including		121.0	123.0	2.0	0.29						
<b>NBRC100</b>	Nyam	2.0	6.0	4.0	0.83	530813	638335	78	300	-60	120
and		16.0	28.0	12.0	0.77						
<b>NBRC101</b>	Nyam	2.0	3.0	1.0	0.58	530817	638367	100	300	-60	83
and		6.0	11.0	5.0	0.36						
and		73.0	75.0	2.0	0.43						
<b>NBRC102</b>	Nyam	32.0	46.0	14.0	0.24	530848	638350	89	300	-60	120
and		52.0	57.0	5.0	0.40						
and		75.0	77.0	2.0	0.42						
<b>NBRC103</b>	Nyam	11.0	23.0	12.0	0.89	530854	638384	85	300	-60	126
and		43.0	44.0	1.0	0.34						
<b>NBRC104</b>	Nyam	78.0	98.0	<b>20.0</b>	<b>0.84</b>	530849	638314	87	300	-60	120
and		108.0	119.0	<b>11.0</b>	<b>0.87</b>						
<b>NBRC105</b>	Nyam	0.0	11.0	11.0	0.63	530737	638212	89	300	-60	132
and		22.0	41.0	19.0	0.38						
and		90.0	96.0	6.0	0.40						
<b>NBRC106</b>	Nyam	3.0	4.0	1.0	1.88	530548	637825	77	300	-60	138
and		41.0	45.0	4.0	0.50						
and		67.0	78.0	11.0	1.08						

## Newcore Gold Ltd. | Enchi Gold Project

2020 - 2022 Drill Results

Table accompanies news release dated April 20, 2022



Hole ID	Zone/Deposit	From (m)	To (m)	Length (m)	Au (g/t)	UTM East	UTM North	Elevation	Azimuth °	Dip °	Hole Length (m)
<b>NBRC107</b>	Nyam	8.0	12.0	4.0	0.52	530547	637889	78	300	-60	66
and		20.0	22.0	2.0	0.54						
and		30.0	34.0	4.0	0.63						
<b>NBDD048</b>	Nyam	82.0	84.0	2.0	0.53	530341	637217	96	300	-60	319.2
and		182.0	183.0	1.0	0.84						
and		207.0	208.0	1.0	0.81						
and		212.0	213.0	1.0	0.30						
and		227.0	229.0	2.0	0.37						
and		236.0	249.0	<b>13.0</b>	<b>4.51</b>						
including		237.5	245.2	<b>7.7</b>	<b>7.40</b>						
and		269.0	271.0	2.0	1.24						
and		295.7	299.0	3.3	0.69						
<b>NBDD049</b>	Nyam	114.0	115.0	1.0	0.72	530629	637594	99	300	-62	382.3
and		121.2	122.7	1.5	1.42						
and		255.5	258.7	3.5	0.90						
and		307.0	310.0	3.0	0.27						
and		323.0	342.0	19.0	0.37						
including		327.0	335.0	8.0	0.54						
and		361.0	364.0	3.0	0.67						
<b>NBDD050</b>	Nyam	116.0	117.5	1.5	0.35	530617	637648	107	300	-63	337.3
and		159.0	160.5	1.5	0.30						
and		183.3	186.0	2.7	0.33						
and		211.0	213.0	2.0	0.81						
and		277.0	281.7	4.7	0.26						
and		293.0	300.0	7.0	0.45						
and		320.0	321.0	1.0	0.41						
and		332.5	333.6	1.5	0.57						

## Newcore Gold Ltd. | Enchi Gold Project

2020 - 2022 Drill Results

Table accompanies news release dated April 20, 2022



Hole ID	Zone/Deposit	From (m)	To (m)	Length (m)	Au (g/t)	UTM East	UTM North	Elevation	Azimuth °	Dip °	Hole Length (m)
<b>NBDD051</b>	Nyam	45.8	46.4	0.6	0.33	530286	637133	75	300	-63	360.7
and		65.0	66.8	1.8	0.82						
and		90.0	91.0	1.0	0.49						
and		105.0	107.1	2.1	0.23						
and		240.0	242.2	2.2	0.34						
and		245.0	247.6	2.6	0.42						
and		254.0	266.0	12.0	0.65						
and		274.0	276.0	<b>2.0</b>	<b>4.57</b>						
and		305.0	306.8	1.8	1.81						
<b>NBDD052</b>	Nyam	207.0	212.0	<b>5.0</b>	<b>1.47</b>	530677	637738	105	300	-63	393.7
and		280.0	297.0	17.0	0.31						
and		321.0	336.0	<b>15.0</b>	<b>3.21</b>						
including		322.0	330.0	<b>8.0</b>	<b>5.57</b>						
<b>NBDD053</b>	Nyam	172.0	174.0	2.0	0.82	530628	637680	109	300	-63	382.4
and		253.0	254.0	1.0	0.74						
and		258.0	275.0	17.0	0.50						
and		291.2	300.1	<b>8.9</b>	<b>1.54</b>						
including		291.2	293.0	<b>1.8</b>	<b>3.78</b>						
including		297.0	298.0	<b>1.0</b>	<b>4.20</b>						
and		311.4	314.6	3.2	0.58						
and		326.6	337.2	10.6	0.37						
<b>NBDD054</b>	Nyam	167.0	170.0	<b>3.0</b>	<b>1.77</b>	530672	637613	118	300	-63	466.7
and		373.4	374.5	1.1	1.38						
and		390.0	397.0	30.0	0.34						
and		423.9	431.0	7.1	0.98						
including		428.4	429.0	0.6	3.52						

## Newcore Gold Ltd. | Enchi Gold Project

2020 - 2022 Drill Results

Table accompanies news release dated April 20, 2022



Hole ID	Zone/Deposit	From (m)	To (m)	Length (m)	Au (g/t)	UTM East	UTM North	Elevation	Azimuth °	Dip °	Hole Length (m)
<b>NBDD055</b>	Nyam	211.0	213.0	2.0	0.29	530401	637334	92	300	-63	337.4
		248.8	250.0	1.2	1.17						
		263.0	265.0	2.0	0.74						
		268.0	270.0	2.0	0.32						
		276.0	284.0	<b>8.0</b>	<b>1.57</b>						
		279.0	281.2	<b>2.2</b>	<b>2.64</b>						
<b>NBDD056</b>	Nyam	100.0	102.3	2.3	1.49	530364	637280	95	300	-63	331.4
		248.7	273.5	<b>24.8</b>	<b>1.62</b>						
		248.7	257.7	<b>9.0</b>	<b>3.17</b>						
		278.0	291.0	13.0	0.67						
		303.4	305.3	1.9	0.46						
<b>NKRC001</b>	Nkwanta	no significant results				525094	633089	101	300	-55	100
<b>KKRC017A</b> and and including	Kwakyekrom	45.0	48.0	3.0	0.52	528698	634833	127	298	-60	150
		69.0	70.0	1.0	1.17						
		89.0	120.0	<b>31.0</b>	<b>0.46</b>						
		107.0	120.0	<b>13.0</b>	<b>0.72</b>						
<b>KKRC018</b> and and	Kwakyekrom	35.0	39.0	4.0	0.29	528658	634784	129	298	-60	120
		86.0	92.0	6.0	0.80						
		99.0	110.0	<b>11.0</b>	<b>2.35</b>						
<b>KKRC019</b> and including and incl. and and	Kwakyekrom	4.0	7.0	3.0	0.36	528611	634738	128	298	-60	120
		58.0	78.0	20.0	0.36						
		59.0	63.0	4.0	0.50						
		70.0	76.0	6.0	0.64						
		88.0	92.0	4.0	0.38						
		102.0	104.0	2.0	0.50						
<b>KKRC020</b> and and and	Kwakyekrom	26.0	28.0	2.0	0.79	528598	634714	133	298	-60	110
		44.0	47.0	3.0	0.43						
		60.0	75.0	15.0	0.48						
		79.0	83.0	4.0	1.04						

## Newcore Gold Ltd. | Enchi Gold Project

2020 - 2022 Drill Results

Table accompanies news release dated April 20, 2022



Hole ID	Zone/Deposit	From (m)	To (m)	Length (m)	Au (g/t)	UTM East	UTM North	Elevation	Azimuth °	Dip °	Hole Length (m)
<b>KKRC021</b>	Kwakyekrom	52.0	69.0	<b>17.0</b>	<b>0.57</b>	528592	634693	132	298	-60	114
and		97.0	104.0	7.0	0.94						
<b>KKRC022</b>	Kwakyekrom	41.0	67.0	<b>26.0</b>	<b>0.51</b>	528555	634617	124	298	-60	114
including		59.0	66.0	5.0	1.59						
and		101.0	104.0	3.0	0.57						
<b>KKRC023</b>	Kwakyekrom	34.0	40.0	<b>6.0</b>	<b>4.71</b>	528542	634595	117	298	-60	122
and		60.0	66.0	6.0	0.34						
<b>KKRC024</b>	Kwakyekrom	35.0	38.0	3.0	0.77	528550	634557	104	298	-60	130
and		59.0	74.0	15.0	0.44						
and		104.0	113.0	9.0	0.23						
<b>KKRC025</b>	Kwakyekrom	0.0	18.0	<b>18.0</b>	<b>0.45</b>	528502	634580	103	298	-60	100
including		13.0	17.0	4.0	1.00						
and		23.0	29.0	6.0	0.57						
and		69.0	77.0	8.0	0.21						
and		89.0	100.0	11.0	0.63						
<b>KKRC026</b>	Kwakyekrom	20.0	24.0	<b>4.0</b>	<b>1.32</b>	528614	634705	128	298	-60	162
and		70.0	73.0	3.0	0.44						
and		80.0	94.0	<b>14.0</b>	<b>1.69</b>						
and		120.0	121.0	1.0	0.44						
and		126.0	128.0	2.0	0.63						
and		138.0	141.0	3.0	0.31						
<b>KKRC027</b>	Kwakyekrom	1.0	3.0	2.0	0.29	528611	634689	128	298	-60	168
and		49.0	51.0	2.0	0.42						
and		78.0	81.0	3.0	0.39						
and		84.0	101.0	<b>17.0</b>	<b>0.91</b>						

## Newcore Gold Ltd. | Enchi Gold Project

2020 - 2022 Drill Results

Table accompanies news release dated April 20, 2022



Hole ID	Zone/Deposit	From (m)	To (m)	Length (m)	Au (g/t)	UTM East	UTM North	Elevation	Azimuth °	Dip °	Hole Length (m)
<b>KKRC028</b>	Kwakyekrom	111.0	137.0	<b>26.0</b>	<b>1.43</b>	528632	634668	126	298	-60	213
including		115.0	124.0	<b>9.0</b>	<b>3.31</b>						
and		149.0	157.0	8.0	0.34						
and		162.0	167.0	5.0	0.69						
and		176.0	180.0	4.0	0.39						
<b>KKRC029</b>	Kwakyekrom	21.0	45.0	<b>24.0</b>	<b>0.89</b>	528574	634699	133	298	-60	126
and		54.0	56.0	2.0	0.41						
and		116.0	118.0	2.0	0.35						
and		123.0	125.0	2.0	0.43						
<b>KKRC030</b>	Kwakyekrom	65.0	66.0	1.0	0.42	528653	634733	127	298	-60	180
and		68.0	69.0	1.0	0.46						
and		109.0	127.0	<b>18.0</b>	<b>0.97</b>						
and		145.0	147.0	2.0	0.43						
<b>KKRC031</b>	Kwakyekrom	30.0	32.0	2.0	0.78	528682	634774	131	298	-60	186
and		114.0	124.0	<b>10.0</b>	<b>2.97</b>						
and		162.0	168.0	<b>6.0</b>	<b>0.88</b>						
and		181.0	184.0	3.0	0.36						
<b>KKRC032</b>	Kwakyekrom	14.0	24.0	10.0	0.32	528570	634723	134	298	-60	114
and		56.0	63.0	7.0	0.40						
<b>KKRC033</b>	Kwakyekrom	26.0	28.0	2.0	0.33	528569	634584	109	298	-60	126
and		47.0	49.0	2.0	0.41						
and		69.0	75.0	<b>6.0</b>	<b>1.19</b>						
<b>KKRC034</b>	Kwakyekrom	14.0	46.0	<b>32.0</b>	<b>0.68</b>	528517	634607	124	298	-60	102
and		67.0	74.0	7.0	0.58						
and		90.0	95.0	5.0	0.34						
<b>KKRC035</b>	Kwakyekrom	0.0	7.0	7.0	0.46	528532	634631	125	298	-60	108
and		17.0	25.0	8.0	0.82						
and		39.0	41.0	2.0	0.30						

## Newcore Gold Ltd. | Enchi Gold Project

2020 - 2022 Drill Results

Table accompanies news release dated April 20, 2022



Hole ID	Zone/Deposit	From (m)	To (m)	Length (m)	Au (g/t)	UTM East	UTM North	Elevation	Azimuth °	Dip °	Hole Length (m)
<b>KKRC036</b>	Kwakyekrom	19.0	22.0	3.0	0.49	528625	634796	130	298	-60	114
and		28.0	31.0	3.0	0.41						
and		54.0	61.0	<b>7.0</b>	<b>1.95</b>						
and		93.0	114.0	21.0	0.41						
<b>KKRC037</b>	Kwakyekrom	44.0	46.0	2.0	0.35	528661	634846	126	298	-60	110
and		88.0	92.0	4.0	0.49						
and		105.0	107.0	2.0	4.12						
<b>KKRC038</b>	Kwakyekrom	36.0	29.0	3.0	0.38	528738	634809	128	298	-60	200
and		97.0	111.0	14.0	0.35						
and		126.0	128.0	2.0	0.37						
and		131.0	143.0	<b>12.0</b>	<b>0.83</b>						
and		153.0	170.0	<b>17.0</b>	<b>1.44</b>						
<b>KKRC039</b>	Kwakyekrom	28.0	38.0	10.0	0.31	528692	634909	129	298	-60	129
<b>KKRC040</b>	Kwakyekrom	12.0	39.0	27.0	0.34	528741	634889	127	298	-60	162
and		95.0	99.0	4.0	0.29						
and		107.0	109.0	2.0	1.29						
and		116.0	120.0	4.0	0.47						
<b>KKRC041</b>	Kwakyekrom	0.0	53.0	<b>53.0</b>	<b>0.79</b>	528466	634474	104	298	-60	120
and		70.0	84.0	14.0	0.45						
<b>KKRC042</b>	Kwakyekrom	0.0	2.0	2.0	0.33	528440	634487	108	298	-60	100
and		38.0	39.0	1.0	0.50						
and		48.0	50.0	2.0	0.35						
and		56.0	62.0	6.0	0.47						
<b>KKRC043</b>	Kwakyekrom	73.0	83.0	<b>10.0</b>	<b>1.51</b>	528580	634606	123	298	-60	144
and		89.0	92.0	3.0	1.16						
and		138.0	140.0	2.0	0.90						
<b>KKRC044</b>	Kwakyekrom	14.0	22.0	8.0	0.49	528362	634281	143	298	-60	114
<b>KKRC045</b>	Kwakyekrom	80.0	87.0	<b>7.0</b>	<b>1.03</b>	528409	634257	142	298	-60	162

## Newcore Gold Ltd. | Enchi Gold Project

2020 - 2022 Drill Results

Table accompanies news release dated April 20, 2022



Hole ID	Zone/Deposit	From (m)	To (m)	Length (m)	Au (g/t)	UTM East	UTM North	Elevation	Azimuth °	Dip °	Hole Length (m)
<b>KKRC046</b>	Kwakyekrom	55.0	79.0	24.0	0.50	528407	634372	123	298	-60	96
including		58.0	72.0	14.0	0.61						
<b>KKRC047</b>	Kwakyekrom	74.0	76.0	2.0	0.33	528454	634348	124	298	-60	138
and		88.0	96.0	8.0	0.41						
<b>KKRC048</b>	Kwakyekrom	24.0	26.0	2.0	0.46	528499	634456	106	298	-60	150
and		58.0	73.0	<b>15.0</b>	<b>1.29</b>						
and		111.0	122.0	<b>11.0</b>	<b>1.86</b>						
and		144.0	147.0	3.0	0.69						
<b>KKRC049</b>	Kwakyekrom	60.0	67.0	7.0	0.34	528539	634435	109	298	-60	213
and		117.0	120.0	3.0	0.91						
and		197.0	200.0	3.0	0.40						
and		208.0	213.0	<b>5.0</b>	<b>2.33</b>						
<b>KKRC050</b>	Kwakyekrom	0.0	3.0	3.0	0.37	528572	634653	131	298	-60	132
and		25.0	28.0	3.0	0.32						
and		36.0	56.0	20.0	0.55						
and		97.0	118.0	21.0	0.46						
including		97.0	108.0	11.0	0.71						
<b>KKRC051</b>	Kwakyekrom	148.0	198.0	<b>50.0</b>	<b>0.61</b>	528656	634656	119	298	-60	246
including		164.0	173.0	<b>9.0</b>	<b>1.36</b>						
and		210.0	212.0	2.0	0.44						
and		225.0	227.0	2.0	1.02						
and	241.0	244.0	3.0	0.63							
<b>KKRC052</b>	Kwakyekrom	54.0	55.0	1.0	0.64	528640	634698	122	298	-60	192
and		75.0	76.0	1.0	0.52						
and		112.0	132.0	<b>20.0</b>	<b>1.19</b>						
including		113.0	118.0	<b>5.0</b>	<b>2.75</b>						
<b>KKRC053</b>	Kwakyekrom	145.0	149.0	4.0	0.90	528667	634679	120	298	-60	240
and		172.0	190.0	<b>18.0</b>	<b>0.75</b>						
and		210.0	212.0	2.0	0.38						



## Newcore Gold Ltd. | Enchi Gold Project

2020 - 2022 Drill Results

Table accompanies news release dated April 20, 2022



Hole ID	Zone/Deposit	From (m)	To (m)	Length (m)	Au (g/t)	UTM East	UTM North	Elevation	Azimuth °	Dip °	Hole Length (m)
<b>KKRC054</b>	Kwakyekrom	98.0	109.0	11.0	0.58	528602	634632	128	298	-60	156
<b>KKRC055</b>	Kwakyekrom	8.0	12.0	<b>4.0</b>	<b>1.21</b>	528590	634565	106	298	-60	168
and		98.0	99.0	1.0	0.70						
and		108.0	121.0	<b>13.0</b>	<b>0.94</b>						
and		162.0	163.0	1.0	0.54						
<b>KKRC056</b>	Kwakyekrom	81.0	88.0	7.0	0.23	528600	634591	114	298	-60	189
and		105.0	106.0	1.0	0.45						
and		110.0	125.0	<b>15.0</b>	<b>0.96</b>						
including		110.0	119.0	<b>9.0</b>	<b>1.46</b>						
and		129.0	130.0	1.0	0.35						
and		134.0	141.0	7.0	0.23						
and		160.0	189.0	<b>29.0</b>	<b>0.94</b>						
including		170.0	176.0	<b>6.0</b>	<b>2.65</b>						
<b>KKRC057</b>	Kwakyekrom	90.0	91.0	1.0	0.31	528636	634623	120	298	-60	202
and		119.0	121.0	2.0	0.31						
and		131.0	148.0	17.0	0.25						
and		192.0	194.0	2.0	0.29						
<b>KKRC058</b>	Kwakyekrom	70.0	72.0	2.0	0.53	528812	634852	113	298	-60	267
and		78.0	80.0	2.0	0.28						
including		85.0	87.0	2.0	0.45						
and		91.0	92.0	1.0	0.32						
and		105.0	106.0	1.0	0.56						
and		146.0	147.0	1.0	0.33						
and		171.0	174.0	3.0	1.47						
and		179.0	181.0	2.0	0.28						
and		194.0	195.0	1.0	0.39						
and		230.0	232.0	2.0	0.64						

## Newcore Gold Ltd. | Enchi Gold Project

2020 - 2022 Drill Results

Table accompanies news release dated April 20, 2022



Hole ID	Zone/Deposit	From (m)	To (m)	Length (m)	Au (g/t)	UTM East	UTM North	Elevation	Azimuth °	Dip °	Hole Length (m)
<b>KKRC059</b>	Kwakyekrom	148.0	151.0	3.0	1.13	528776	634792	118	298	-60	276
and		169.0	171.0	2.0	0.50						
and		177.0	184.0	7.0	0.63						
and		217.0	218.0	1.0	1.63						
<b>KKRC060</b>	Kwakyekrom	148.0	156.0	8.0	0.66	528710	634749	127	298	-60	234
and		168.0	177.0	9.0	0.71						
and		189.0	190.0	1.0	1.41						
<b>KKRC061C</b>	Kwakyekrom	154.0	156.0	2.0	0.45	528696	634718	117	298	-60	210
<b>KKRC062</b>	Kwakyekrom	no significant results				528326	634188	167	298	-60	107
<b>KKRC063</b>	Kwakyekrom	86.0	89.0	3.0	0.44	528364	634167	169	298	-60	186
and		123.0	124.0	1.0	0.51						
and		154.0	155.0	1.0	0.78						
<b>KKRC064</b>	Kwakyekrom	84.0	85.0	1.0	0.61	528384	633885	129	298	-60	144
and		114.0	123.0	9.0	0.50						
<b>KKRC065</b>	Kwakyekrom	94.0	105.0	11.0	0.90	528409	633870	123	298	-60	200
and		141.0	144.0	3.0	0.64						
<b>KKRC066</b>	Kwakyekrom	no significant results				529459	636214	80	298	-60	138
<b>KKRC067</b>	Kwakyekrom	35.0	36.0	1.0	0.20	529362	636053	110	298	-60	152
<b>KKRC068</b>	Kwakyekrom	81.0	83.0	2.0	0.22	529534	636175	93	298	-60	144
<b>KKRC069</b>	Kwakyekrom	no significant results				529156	635702	113	298	-60	150
<b>KKRC070</b>	Kwakyekrom	31.0	32.0	1.0	0.46	529236	635656	109	298	-60	160
and		128.0	132.0	4.0	0.37						
and		141.0	144.0	3.0	1.54						
<b>KKRC071</b>	Kwakyekrom	32.0	33.0	1.0	0.24	529055	635525	90	298	-60	162
and		64.0	65.0	1.0	0.53						

## Newcore Gold Ltd. | Enchi Gold Project

2020 - 2022 Drill Results

Table accompanies news release dated April 20, 2022



Hole ID	Zone/Deposit	From (m)	To (m)	Length (m)	Au (g/t)	UTM East	UTM North	Elevation	Azimuth °	Dip °	Hole Length (m)
<b>KKRC072</b>	Kwakyekrom	3.0	8.0	5.0	0.21	529126	635490	96	298	-60	166
and		12.0	15.0	3.0	0.23						
and		22.0	23.0	1.0	0.27						
and		29.0	30.0	1.0	0.36						
and		92.0	93.0	1.0	2.70						
and		155.0	156.0	1.0	0.31						
<b>KKRC073</b>	Kwakyekrom			no significant results		529260	635869	96	298	-60	156
<b>KKRC074</b>	Kwakyekrom	91.0	94.0	3.0	0.41	529331	635828	88	298	-60	162
<b>KKRC075</b>	Kwakyekrom	53.0	60.0	<b>7.0</b>	<b>2.31</b>	528961	635355	100	298	-60	150
and		79.0	82.0	3.0	0.22						
and		105.0	108.0	3.0	0.33						
<b>KKRC076</b>	Kwakyekrom	46.0	47.0	1.0	0.21	529022	635319	97	298	-60	200
and		119.0	132.0	<b>13.0</b>	<b>1.14</b>						
and		156.0	157.0	1.0	0.75						
and		174.0	178.0	4.0	0.50						
and		185.0	186.0	1.0	0.45						
and		189.0	191.0	<b>2.0</b>	<b>2.29</b>						
<b>KKRC077</b>	Kwakyekrom	23.0	29.0	6.0	0.52	528913	635267	112	298	-60	162
and		153.0	154.0	1.0	0.30						
<b>KKRC078</b>	Kwakyekrom	63.0	78.0	15.0	0.28	528983	635231	97	298	-60	192
including		72.0	74.0	2.0	1.23						
and		136.0	138.0	2.0	0.71						
and		161.0	184.0	23.0	0.56						
including		172.0	174.0	2.0	1.79						

## Newcore Gold Ltd. | Enchi Gold Project

2020 - 2022 Drill Results

Table accompanies news release dated April 20, 2022



Hole ID	Zone/Deposit	From (m)	To (m)	Length (m)	Au (g/t)	UTM East	UTM North	Elevation	Azimuth °	Dip °	Hole Length (m)
<b>KKRC079</b>	Kwakyekrom	104.0	106.0	2.0	0.23	528950	635137	90	298	-60	210
and		147.0	152.0	5.0	0.67						
and		155.0	157.0	2.0	0.60						
and		160.0	166.0	6.0	0.73						
and		182.0	184.0	2.0	0.72						
and		198.0	203.0	5.0	1.84						
and		208.0	210.0	2.0	2.61						
<b>KKRC080</b>	Kwakyekrom	6.0	7.0	1.0	0.30	528825	635093	94	298	-60	162
and		40.0	43.0	<b>3.0</b>	<b>1.67</b>						
and		50.0	51.0	1.0	0.53						
and		81.0	110.0	<b>29.0</b>	<b>0.99</b>						
and		122.0	123.0	1.0	0.32						
and		129.0	132.0	3.0	0.54						
and		145.0	147.0	2.0	0.25						
<b>KKRC081</b>	Kwakyekrom	104.0	105.0	1.0	0.24	528901	635052	98	298	-60	156
<b>KKRC082</b>	Kwakyekrom	39.0	49.0	10.0	0.36	528840	634942	102	298	-60	150
and		57.0	59.0	2.0	0.43						
and		62.0	64.0	2.0	0.45						
and		116.0	117.0	1.0	0.88						
<b>KKRC083</b>	Kwakyekrom	53.0	62.0	9.0	0.77	528894	634916	98	298	-60	188
and		166.0	169.0	3.0	0.39						
<b>KKRC084</b>	Kwakyekrom	80.0	84.0	4.0	0.71	529438	635997	87	298	-60	168
<b>KJRC011</b>	Kojina Hill	no significant results				528887	637281	110	300	-65	170
<b>KJRC012</b>	Kojina Hill	218.0	222.0	<b>4.0</b>	<b>1.34</b>	528887	637281	110	300	-75	252
and		229.0	230.0	1.0	0.83						

## Newcore Gold Ltd. | Enchi Gold Project

2020 - 2022 Drill Results

Table accompanies news release dated April 20, 2022



Hole ID	Zone/Deposit	From (m)	To (m)	Length (m)	Au (g/t)	UTM East	UTM North	Elevation	Azimuth °	Dip °	Hole Length (m)
<b>KJRC013</b>	Kojina Hill	6.0	13.0	7.0	0.33	528897	637243	123	300	-60	170
and		83.0	113.0	<b>30.0</b>	<b>0.39</b>						
including		83.0	91.0	<b>8.0</b>	<b>0.51</b>						
and incl.		94.0	99.0	5.0	0.56						
and incl.		109.0	113.0	4.0	0.57						
<b>KJRC014</b>	Kojina Hill	57.0	60.0	3.0	0.37	528897	637243	123	300	-75	288
and		209.0	212.0	3.0	0.37						
<b>KJRC015</b>	Kojina Hill	126.0	127.0	1.0	0.40	528867	637240	130	300	-60	192
and		139.0	140.0	1.0	0.42						
<b>KJRC016</b>	Kojina Hill	174.0	175.0	1.0	0.31	528871	637239	127	300	-75	252
and		208.0	209.0	1.0	0.30						
and		244.0	246.0	2.0	0.33						
<b>KJRC017</b>	Kojina Hill	108.0	112.0	4.0	0.86	528838	637203	149	300	-65	162
and		119.0	122.0	3.0	0.28						
and		125.0	145.0	<b>20.0</b>	<b>1.09</b>						
including		125.0	129.0	<b>4.0</b>	<b>2.52</b>						
and		155.0	156.0	1.0	0.47						
<b>KJRC018</b>	Kojina Hill	48.0	50.0	2.0	0.30	528860	637219	141	300	-65	150
and		98.0	102.0	4.0	0.68						
<b>KJRC019</b>	Kojina Hill	81.0	89.0	8.0	0.50	528871	637239	129	270	-70	282
and		121.0	122.0	1.0	0.60						
<b>KJRC020</b>	Kojina Hill	67.0	69.0	2.0	0.44	528805	637400	97	120	-55	90
<b>KJRC021</b>	Kojina Hill		no significant results			528774	637413	88	120	-55	132
<b>KJRC022</b>	Kojina Hill	2.0	3.0	1.0	0.62	528789	637334	113	120	-55	120
and		44.0	49.0	<b>5.0</b>	<b>1.68</b>						
and		61.0	120.0	<b>59.0</b>	<b>0.79</b>						
including		80.0	90.0	<b>10.0</b>	<b>3.03</b>						
<b>KJRC023</b>	Kojina Hill		no significant results			528766	637358	64	120	-55	168

## Newcore Gold Ltd. | Enchi Gold Project

2020 - 2022 Drill Results

Table accompanies news release dated April 20, 2022



Hole ID	Zone/Deposit	From (m)	To (m)	Length (m)	Au (g/t)	UTM East	UTM North	Elevation	Azimuth °	Dip °	Hole Length (m)
<b>KJRC024</b>	Kojina Hill	86.0	100.0	14.0	0.87	528786	637377	107	120	-55	160
and		117.0	132.0	<b>15.0</b>	<b>1.44</b>						
<b>ERDD011</b>	Eradi	118.7	120.0	1.3	0.36	539579	650489	165	130	-60	179.2
and		148.7	150.0	1.3	0.73						
and		166.0	169.0	3.0	0.28						
<b>ERDD012</b>	Eradi	25.0	26.0	1.0	0.35	539818	650767	211	130	-60	79.7
<b>ERDD012A</b>	Eradi	77.0	78.0	1.0	0.95	539823	650758	212	130	-60	260.2
and		172.7	173.5	0.8	0.31						
and		192.0	193.0	1.0	0.39						
and		256.0	257.0	1.0	0.36						
<b>ERDD013</b>	Eradi	19.6	26.0	6.4	0.35	539765	650539	161	130	-60	81.1
<b>ERDD014</b>	Eradi	102.5	103.7	1.2	0.48	539860	650741	216	130	-60	182.2
<b>ERDD015</b>	Eradi	9.7	14.3	<b>4.6</b>	<b>0.87</b>	539729	650573	163	130	-60	158.2
and		65.8	72.9	<b>7.1</b>	<b>0.61</b>						
and		105.6	107.8	<b>2.2</b>	<b>0.93</b>						
<b>ERDD016</b>	Eradi	6.8	8.6	1.8	0.48	539878	650616	197	130	-60	102.2
and		34.0	34.7	0.7	0.57						
<b>ERDD017</b>	Eradi	7.2	8.6	1.4	0.49	539848	650644	203	130	-60	102
and		75.7	77.4	1.7	0.95						
and		79.7	81.0	1.3	0.27						
and		99.7	100.7	1.0	0.38						
<b>ERDD018</b>	Eradi	10.2	10.8	0.6	0.39	540021	650784	193	130	-60	152.2
and		34.6	35.7	1.1	0.77						
<b>ERDD019</b>	Eradi	25.0	29.0	4.0	0.44	540284	651078	127	130	-60	173.1
and		75.9	77.3	1.4	0.76						

# Newcore Gold Ltd. | Enchi Gold Project

2020 - 2022 Drill Results

Table accompanies news release dated April 20, 2022



Hole ID	Zone/Deposit	From (m)	To (m)	Length (m)	Au (g/t)	UTM East	UTM North	Elevation	Azimuth °	Dip °	Hole Length (m)
<b>ERDD020</b>	Eradi	10.0	11.0	1.0	0.31	540466	651192	178	130	-60	158.2
and		15.2	19.7	4.5	0.43						
and		41.2	89.0	<b>47.8</b>	<b>0.89</b>						
including		41.2	43.7	<b>2.5</b>	<b>6.44</b>						
and incl.		54.2	60.0	<b>5.8</b>	<b>2.14</b>						
and	92.8	93.8	1.0	2.45							
<b>ERDD021</b>	Eradi	75.2	79.2	4.0	0.56	540551	651237	186	130	-60	224
and		124.0	125.0	1.0	1.61						
and		198.3	204.0	3.5	0.41						
<b>ERDD022</b>	Eradi	80.0	82.0	2.0	0.95	540356	651175	159	130	-60	185.2
and		88.0	89.5	1.5	0.53						
and		91.0	92.0	1.0	0.34						
and		152.0	154.0	2.0	0.56						
and		168.0	169.0	1.0	0.47						
<b>ERDD023</b>	Eradi	77.4	84.0	6.6	0.60	540304	651188	113	130	-60	152
and		126.0	127.0	1.0	0.31						
<b>TORC001</b>	Tokosea	3.0	7.0	4.0	0.21	522718	629843	117	120	-50	96
and		26.0	27.0	1.0	0.35						
and		67.0	69.0	2.0	0.22						
and		76.0	78.0	2.0	0.33						
and		80.0	82.0	2.0	0.36						
and	87.0	89.0	2.0	0.30							
<b>TORC002</b>	Tokosea	5.0	7.0	2.0	0.20	522659	629877	127	120	-50	100
<b>TORC003</b>	Tokosea	2.0	4.0	2.0	0.58	522604	629911	144	120	-50	100
and		38.0	49.0	<b>11.0</b>	<b>0.81</b>						
including		44.0	46.0	<b>2.0</b>	<b>2.73</b>						
<b>TORC004</b>	Tokosea		no significant results			522562	629719	123	120	-50	100
<b>TORC005</b>	Tokosea		no significant results			522499	629747	126	120	-50	100
<b>TORC006</b>	Tokosea	35.0	36.0	1.0	0.21	522342	629817	126	120	-50	102

## Newcore Gold Ltd. | Enchi Gold Project

2020 - 2022 Drill Results

Table accompanies news release dated April 20, 2022



Hole ID	Zone/Deposit	From (m)	To (m)	Length (m)	Au (g/t)	UTM East	UTM North	Elevation	Azimuth °	Dip °	Hole Length (m)
<b>TORC007</b>	Tokosea	32.0	33.0	1.0	0.40	522290	629847	120	120	-50	114
and		36.0	67.0	<b>31.0</b>	<b>0.36</b>						
including		37.0	45.0	<b>8.0</b>	<b>0.67</b>						
and		77.0	79.0	2.0	0.40						
and		87.0	113.0	<b>26.0</b>	<b>0.34</b>						
<b>TORC008</b>	Tokosea	12.0	13.0	1.0	0.45	522436	629991	129	120	-50	102
and		22.0	23.0	1.0	0.29						
and		25.0	26.0	1.0	0.52						
and		33.0	51.0	18.0	0.34						
including		43.0	46.0	3.0	0.79						
and		71.0	72.0	1.0	0.66						
and		79.0	80.0	1.0	0.80						
<b>TORC009</b>	Tokosea	1.0	9.0	8.0	0.41	522369	630029	119	120	-50	126
and		50.0	61.0	11.0	0.23						
and		71.0	72.0	1.0	1.01						
and		111.0	112.0	1.0	0.36						
and		117.0	120.0	3.0	0.44						
<b>TORC010</b>	Tokosea	9.0	13.0	4.0	0.20	522776	629274	117	120	-50	100
and		17.0	21.0	<b>4.0</b>	<b>0.34</b>						
and		38.0	59.0	<b>21.0</b>	<b>0.30</b>						
including		55.0	56.0	<b>1.0</b>	<b>1.44</b>						
and		71.0	78.0	<b>7.0</b>	<b>0.35</b>						
<b>TORC011</b>	Tokosea	20.0	29.0	9.0	0.20	522732	629213	107	120	-50	114
and		51.0	57.0	6.0	0.34						
and		71.0	74.0	3.0	0.57						



## Newcore Gold Ltd. | Enchi Gold Project

2020 - 2022 Drill Results

Table accompanies news release dated April 20, 2022



Hole ID	Zone/Deposit	From (m)	To (m)	Length (m)	Au (g/t)	UTM East	UTM North	Elevation	Azimuth °	Dip °	Hole Length (m)
<b>TORC012</b>	Tokosea	4.0	31.0	<b>27.0</b>	<b>0.51</b>	522650	629254	134	120	-50	132
including		23.0	28.0	<b>5.0</b>	<b>1.92</b>						
and		43.0	44.0	1.0	0.40						
and		104.0	107.0	3.0	0.42						
and		112.0	115.0	3.0	0.36						
and		125.0	131.0	<b>6.0</b>	<b>1.73</b>						
including		125.0	127.0	<b>2.0</b>	<b>4.35</b>						
<b>TORC013</b>	Tokosea	31.0	37.0	6.0	0.38	522866	629373	120	120	-50	130
including		33.0	34.0	1.0	1.51						
and		70.0	71.0	1.0	0.46						
and		88.0	90.0	2.0	0.45						
and		103.0	108.0	5.0	0.73						
<b>TORC014</b>	Tokosea	19.0	20.0	1.0	0.30	522992	629514	147	120	-50	114
and		29.0	31.0	2.0	0.38						
and		42.0	44.0	2.0	0.53						
and		52.0	56.0	4.0	0.30						
and		75.0	76.0	1.0	0.46						
and		104.0	106.0	2.0	0.31						
<b>TORC015</b>	Tokosea	96.0	97.0	1.0	0.29	522795	629414	118	120	-50	102
<b>TORC016</b>	Tokosea	26.0	27.0	1.0	1.83	523092	629680	120	120	-50	100
and		43.0	54.0	<b>11.0</b>	<b>0.84</b>						
including		53.0	54.0	<b>1.0</b>	<b>6.81</b>						
and		61.0	67.0	6.0	0.39						
<b>TORC017</b>	Tokosea	51.0	52.0	1.0	0.33	522648	628835	122	120	-50	120
and		61.0	62.0	1.0	0.38						
<b>TORC018</b>	Tokosea	4.0	5.0	1.0	0.85	522502	628681	111	120	-50	102
<b>TORC019</b>	Tokosea	26.0	29.0	3.0	0.67	522423	628718	121	120	-50	102
and		84.0	91.0	7.0	0.87						

## Newcore Gold Ltd. | Enchi Gold Project

2020 - 2022 Drill Results

Table accompanies news release dated April 20, 2022



Hole ID	Zone/Deposit	From (m)	To (m)	Length (m)	Au (g/t)	UTM East	UTM North	Elevation	Azimuth °	Dip °	Hole Length (m)
<b>TORC020</b>	Tokosea	74.0	86.0	<b>12.0</b>	<b>0.90</b>	522566	628880	157	120	-50	138
including		76.0	78.0	<b>2.0</b>	<b>4.55</b>						
and		127.0	129.0	2.0	0.93						
<b>TORC021</b>	Tokosea	55.0	57.0	2.0	0.51	522477	628821	137	120	-50	108
and		72.0	77.0	<b>5.0</b>	<b>1.30</b>						
including		74.0	75.0	<b>1.0</b>	<b>4.17</b>						
<b>TORC022</b>	Tokosea	no significant results				523036	629482	161	120	-50	108
<b>TORC023</b>	Tokosea	89.0	90.0	1.0	0.47	523241	630315	134	120	-50	114
and		96.0	98.0	2.0	0.36						
and		108.0	109.0	1.0	0.32						
<b>TORC024</b>	Tokosea	2.0	9.0	7.0	0.22	523838	630705	136	120	-50	108
and		17.0	26.0	9.0	0.21						
and		29.0	39.0	10.0	0.20						
<b>TORC025</b>	Tokosea	3.0	6.0	<b>3.0</b>	<b>1.15</b>	523959	630632	141	120	-50	108
and		69.0	70.0	1.0	0.31						
and		74.0	83.0	<b>9.0</b>	<b>3.52</b>						
including		77.0	81.0	<b>4.0</b>	<b>7.36</b>						
and		90.0	91.0	1.0	0.33						
<b>TORC026</b>	Tokosea	12.0	14.0	2.0	0.41	523893	630671	133	120	-50	108
and		18.0	19.0	1.0	0.50						
and		43.0	54.0	11.0	0.52						
including		45.0	46.0	1.0	2.88						
and		87.0	89.0	2.0	1.36						
and		91.0	92.0	1.0	0.29						
and		104.0	105.0	1.0	0.26						
<b>SWRC114</b>	Sewum South	54.0	57.0	3.0	0.40	518581	624633	105	114	-55	114
and		107.0	110.0	3.0	0.30						
<b>SWRC115</b>	Sewum South	61.0	64.0	3.0	0.97	518542	624660	112	114	-55	120
<b>SWRC116</b>	Sewum South	no significant results				518887	624432	81	114	-55	102

# Newcore Gold Ltd. | Enchi Gold Project

2020 - 2022 Drill Results

Table accompanies news release dated April 20, 2022



Hole ID	Zone/Deposit	From (m)	To (m)	Length (m)	Au (g/t)	UTM East	UTM North	Elevation	Azimuth °	Dip °	Hole Length (m)
<b>SWRC117</b>	Sewum South	20.0	26.0	<b>6.0</b>	<b>0.75</b>	518414	624361	110	114	-55	102
<b>SWRC118</b>	Sewum South	9.0	14.0	5.0	0.35	518336	624390	108	114	-55	114
and		20.0	22.0	2.0	0.32						
and		33.0	50.0	<b>17.0</b>	<b>0.31</b>						
including		35.0	38.0	<b>3.0</b>	<b>0.63</b>						
and		72.0	74.0	2.0	0.34						
and		78.0	80.0	2.0	0.48						
and		106.0	107.0	1.0	0.40						
<b>SWRC119</b>	Sewum South	97.0	98.0	1.0	0.82	519546	625004	87	114	-55	100
<b>SWRC120</b>	Sewum South		no significant results			519485	625030	88	114	-55	102
<b>SWRC121</b>	Sewum South	54.0	78.0	<b>24.0</b>	<b>0.53</b>	518704	625382	141	114	-55	108
including		54.0	57.0	<b>3.0</b>	<b>1.09</b>						
including		69.0	71.0	<b>2.0</b>	<b>1.61</b>						
<b>SWRC122</b>	Sewum South	21.0	23.0	2.0	0.40	518905	625299	101	114	-55	100
<b>SWRC123</b>	Sewum South	29.0	30.0	1.0	0.22	519390	625078	87	114	-55	102
<b>SWRC124</b>	Sewum South	41.0	43.0	2.0	0.81	518975	626583	208	114	-55	102
<b>SWRC125</b>	Sewum South	86.0	92.0	6.0	0.45	519047	626547	198	114	-55	100
<b>SWRC126</b>	Sewum South	21.0	22.0	1.0	0.31	519141	626508	137	114	-55	102
and		29.0	31.0	2.0	0.81						
and		47.0	48.0	1.0	0.36						
and		56.0	61.0	5.0	0.26						
and		66.0	68.0	2.0	0.64						
<b>SWRC127</b>	Sewum South	20.0	21.0	1.0	0.40	519245	626465	108	114	-55	114
<b>SWRC128</b>	Sewum South	80.0	81.0	1.0	0.26	518657	625888	211	114	-55	120
and		111.0	112.0	1.0	0.22						
<b>SWRC129</b>	Sewum South	19.0	35.0	<b>16.0</b>	<b>0.51</b>	518726	625859	178	114	-55	100
including		19.0	21.0	<b>2.0</b>	<b>1.64</b>						
including		30.0	33.0	<b>3.0</b>	<b>0.94</b>						
and		48.0	50.0	2.0	0.48						

## Newcore Gold Ltd. | Enchi Gold Project

2020 - 2022 Drill Results

Table accompanies news release dated April 20, 2022



Hole ID	Zone/Deposit	From (m)	To (m)	Length (m)	Au (g/t)	UTM East	UTM North	Elevation	Azimuth °	Dip °	Hole Length (m)
<b>SWRC130</b>	Sewum South	14.0	18.0	<b>4.0</b>	<b>1.50</b>	518791	625819	145	114	-55	102
and		25.0	40.0	<b>15.0</b>	<b>0.95</b>						
including		25.0	30.0	<b>5.0</b>	<b>2.31</b>						
<b>SWRC131</b>	Sewum South	42.0	50.0	<b>8.0</b>	<b>1.57</b>	518836	625800	134	294	-50	100
<b>SWRC132</b>	Sewum South	11.0	12.0	1.0	0.32	518918	626183	167	114	-55	100
<b>SWRC133</b>	Sewum South	14.0	24.0	<b>10.0</b>	<b>0.76</b>	518991	626151	120	114	-55	100
including		22.0	23.0	<b>1.0</b>	<b>3.94</b>						
and		35.0	38.0	3.0	0.30						
<b>SWRC134</b>	Sewum South	26.0	27.0	1.0	0.30	519146	625649	132	294	-50	102
<b>SWRC135</b>	Sewum South	11.0	12.0	1.0	0.19	519082	625670	120	294	-50	102
<b>SWRC136</b>	Sewum South	16.0	17.0	1.0	0.47	519063	625680	123	114	-55	102
<b>SWRC137</b>	Sewum South	46.0	47.0	1.0	0.37	520106	626951	109	114	-50	102
<b>SWRC138</b>	Sewum South	2.0	3.0	1.0	0.2	520028	626992	111	114	-50	100
and		67.0	68.0	1.0	0.3						
<b>SWRC139</b>	Sewum South	no significant results				519963	627038	101	114	-50	108
<b>SWRC140</b>	Sewum South	17.0	18.0	1.0	0.18	519324	626827	130	114	-55	100
and		95.0	96.0	1.0	0.42						
<b>SWRC141A</b>	Sewum South	60.0	62.0	2.0	0.39	518947	625742	193	114	-50	200
<b>SWRC142</b>	Sewum South	30.0	31.0	1.0	0.26	518986	625727	162	114	-55	100

1. Intervals reported are hole lengths with true width estimated to be 75 - 85%.

2. Length-weighted averages from uncut assays.

3. All drilling completed by independent contractor.

4. All drilling samples sealed on site and delivered directly to independent lab Intertek Mineral Limited located in Tarkwa, Ghana for preparation and 50g Fire Assay with AAS finish.

5. QA/QC procedures include industry standard inclusion of standards, blanks, and duplicates in all sample batches.